



Purse

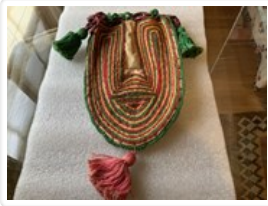
<https://archives.whyte.org/en/permalink/artifact103.08.0040%20a%20b>

Title:	Purse
Date:	1920 – 1935
Material:	fibre, silk
Dimensions:	2.0 x 7.0 x 7.0 cm
Description:	Two matching small gold silk drawstring purses whose drawstrings are tied together. Each purse has delicate purple and blue flowers embroidered with silk and metallic thread, and two long red silk tassels hanging from the top of either side. Both purses are padded.
Subject:	households crafts needlework
Credit:	Gift of Pearl Evelyn Moore, Banff, 1979
Catalogue Number:	103.08.0040 a,b

Images



This material is presented as originally created; it may contain outdated cultural descriptions and potentially offensive content. [Read more.](#)



Purse

<https://archives.whyte.org/en/permalink/artifact103.08.0063>

Title:	Purse
Date:	1920 – 1950
Material:	fibre, cotton
Dimensions:	16.0 x 32.0 cm
Description:	<p>A pouch-shaped bag of white cotton with a drawstring at the neck. The bag is decorated with narrow bands of red, green and yellow embroidery following the shape of the bag, and with a pink tassel at the bottom. The bag's drawstring is made of twisted pink and black threads, and has a green tassel at each end.</p>
Subject:	<p>households</p> <p>crafts</p> <p>needlework</p>
Credit:	Gift of Pearl Evelyn Moore, Banff, 1979
Catalogue Number:	103.08.0063

Images



This material is presented as originally created; it may contain outdated cultural descriptions and potentially offensive content. [Read more.](#)



Purse

<https://archives.whyte.org/en/permalink/artifact103.08.0079>

Title:	Purse
Date:	1920 – 1940
Material:	fibre, silk; wood
Dimensions:	40.0 x 32.0 cm
Description:	A printed silk chiffon bag with a pattern of flowers and horizontal stripes. The bag has a wooden frame at the opening, and fastens with a wooden bead button. The bag has two handles made of the same fabric as the bag.
Subject:	households
Credit:	Gift of Pearl Evelyn Moore, Banff, 1979
Catalogue Number:	103.08.0079

Images



This material is presented as originally created; it may contain outdated cultural descriptions and potentially offensive content. [Read more.](#)



Purse

<https://archives.whyte.org/en/permalink/artifact103.08.0143>

Title:	Purse
Date:	1920 – 1940
Material:	fibre, silk
Dimensions:	12.0 x 8.3 cm
Description:	A small, flat, red silk purse with curved sides and single pink and white peony applique on the front. The purse has a green and a red silk tassel that hang from each side, and a silk loop at the top.
Subject:	households crafts needlework
Credit:	Gift of Pearl Evelyn Moore, Banff, 1979
Catalogue Number:	103.08.0143

Images



This material is presented as originally created; it may contain outdated cultural descriptions and potentially offensive content. [Read more.](#)



Purse

<https://archives.whyte.org/en/permalink/artifact103.08.0161>

Title:	Purse
Date:	1890 – 1910
Material:	metal; skin; fibre
Dimensions:	24.0 x 1.0 x 14.5 cm
Description:	A brown suede purse which hangs by two straps from a fabric belt. There is a small money holder with a metal frame that fits inside a pocket. The money holder fastens with two snaps. The lining of the purse is stamped with a patent note.
Subject:	tourism
Credit:	Gift of Pearl Evelyn Moore, Banff, 1979
Catalogue Number:	103.08.0161

Images



This material is presented as originally created; it may contain outdated cultural descriptions and potentially offensive content. [Read more.](#)



Purse

<https://archives.whyte.org/en/permalink/artifact103.08.0207%20a%2cb>

Title:	Purse
Date:	1920 – 1940
Material:	skin, snake
Dimensions:	2.5 x 9.2 x 10.5 cm
Description:	A black and white snakeskin change purse with two pieces. The smaller section (a) slides into the larger section (b) to close the purse.
Subject:	travel households animals, snake
Credit:	Gift of Pearl Evelyn Moore, Banff, 1979
Catalogue Number:	103.08.0207 a,b

Images



This material is presented as originally created; it may contain outdated cultural descriptions and potentially offensive content. [Read more.](#)



Purse

<https://archives.whyte.org/en/permalink/artifact103.08.0363%20a%2cb>

Title:	Purse
Date:	1920 – 1930
Material:	fibre
Dimensions:	28.0 x 23.9 cm
Description:	A pair of flat, silk bags both lined with the same pink and purple striped silk fabric. (a) black rounded bottom , printed with rows of stylized flowers of red, blue, and pink. A row of black thread loops passing around bag just below mouth holds double drawstring cord of pink and green twisted cotton threads knotted at each end with small tassels. (b) blue square, printed with small scattered bouquets of stylized pink and yellow flowers, and small comb like symbol. Casing sewn below mouth holds double drawstring cord of twisted black cotton threads.
Subject:	households
Credit:	Gift of Catharine Robb Whyte, O. C., Banff, 1979
Catalogue Number:	103.08.0363 a,b

Images



This material is presented as originally created; it may contain outdated cultural descriptions and potentially offensive content. [Read more.](#)