



Ki ippogan

<https://archives.whyte.org/en/permalink/artifactchy.04.15>

Artist: Yoshu Chikanobu (1838 – 1912, Japanese)

Title: Ki ippogan

Date: 1890

Medium: woodblock on paper

Dimensions: 35.5 x 70 cm

Description: A group of six women dressed in kimonos are surrounded by large leafy taro plants. They are and are reacting to a woman falling on the right side of the image. The background left and right is decorated with silhouettes of trees. There are signatures or markings at the bottom right and the upper left.

Subject: women
Japanese
vegetation

Credit: Gift of Catharine Robb Whyte, O. C., Banff, 1979

Catalogue Number: ChY.04.15

Images



This material is presented as originally created; it may contain outdated cultural descriptions and potentially offensive content. [Read more.](#)



Noble Ladies in Tokugawa Era

<https://archives.whyte.org/en/permalink/artifactchy.04.06%20a-c>

Artist:	Yoshu Chikanobu (1838 – 1912, Japanese)
Title:	Noble Ladies in Tokugawa Era
Date:	1895
Medium:	woodblock on paper
Dimensions:	36.0 x 71.25 cm
Description:	<p>This triptych features three women: one per panel. In the first panel is a woman standing holding a rope which is cut off by the edge of paper. Her head is facing right and down looking into the second panel where the rope she is holding is attached to a cart. This cart contains a very large basket of flowers, and a woman is crouching down by the cart holding a beautiful red scarf. The cart's wheel goes into the third panel where a woman holding a small child stands. This woman's body is facing towards the right, but her head turned down and to the left to view the cart. There is no background in any of the scenes, except for a blossoming tree behind the cart.</p>
Subject:	<p>group</p> <p>figures</p> <p>female</p> <p>activity</p> <p>summer</p>
Credit:	Gift of Catharine Robb Whyte, O. C., Banff, 1979
Catalogue Number:	ChY.04.06 a-c

Images



This material is presented as originally created; it may contain outdated cultural descriptions and potentially offensive content. [Read more.](#)



Evening Mt. Fuji During the Upward Wind

<https://archives.whyte.org/en/permalink/artifactchy.04.08%20a-c>

Artist:	Yoshu Chikanobu (1838 – 1912, Japanese)
Title:	Evening Mt. Fuji During the Upward Wind
Date:	1895
Medium:	woodblock on paper
Dimensions:	37 x 72 cm
Description:	<p>This triptych features four women spread across three panels with Mt. Fuji softly in the background. A stretch of bushes separated the women from the background and is mostly grey. The lone Mt. Fuji is the only background with paper tone behind it. In the first panel Mt. Fuji starts and two women stand with their bodies facing each other. The smaller woman is pointing at Mt. Fuji. In the second panel a woman stands in the rc, her body facing right and her head turned back to the left. She has her back to the mountain which is mostly featured in the second panel. In the third panel a woman sits on a bench facing left with her hand by her chest. A lamp is to the left of her bench. The ground the woman are on is mostly paper tone with a light wash.</p>
Subject:	<p>figures</p> <p>woman</p> <p>landscape</p> <p>mountain</p> <p>Mt. Fuji</p>
Credit:	Gift of Catharine Robb Whyte, O. C., Banff, 1979
Catalogue Number:	ChY.04.08 a-c

Images



This material is presented as originally created; it may contain outdated cultural descriptions and potentially offensive content. [Read more.](#)



Untitled [Ceremony]

<https://archives.whyte.org/en/permalink/artifactchy.04.11%20a-c>

Artist: Yoshu Chikanobu (1838 – 1912, Japanese)

Title: Untitled [Ceremony]

Date: 1895

Medium: woodblock on paper

Dimensions: 35.5 x 72.5 cm

Description: This scene features a ceremony. The background and floor have no colour. The first panel has a screen depicting a tree in the tlc which reaches half way into the print. Three women sit on the right side of the screen, one moving into the second panel. A woman kneeling holding a bowl takes up the second panel and a portion of the first. She kneels before a woman sitting in the third panel on a raised surface. Beside her sits, below the raised surface, another woman facing left. A screen is visible in the trc.

Subject: Activity
Gathering
Figures
Women

Credit: Gift of Catharine Robb Whyte, O. C., Banff, 1979

Catalogue Number: ChY.04.11 a-c

Images



This material is presented as originally created; it may contain outdated cultural descriptions and potentially offensive content. [Read more.](#)



Changing of Robes, Chiyoda Castle (Album of Women)

<https://archives.whyte.org/en/permalink/artifactchy.04.01%20a-c>

Artist:	Yoshu Chikanobu (1838 – 1912, Japanese)
Title:	Changing of Robes, Chiyoda Castle (Album of Women)
Date:	1896
Medium:	woodblock on paper
Dimensions:	36 x 25 cm
Description:	(a)standing female figure, dressed in red kimono, holding a black box, in front of what appears to be a vanity table with mirror, artist's marks in the lower left hand corner (b) 36.9 x 25.3/35.5x23.7 kneeling female figure dressed in black kimono is helping another standing female figure adjust her kimono, which is patterned with fans (c) 36.8x25.2/35.523.6 kneeling female figure in dark blue flowing kimono looking over her right shoulder, folding what appears to be a bed quilt, artist's marks in the lower right hand corner, and calligraphy in the upper right hand corner (a)(b) and (c) are a triptych, and all have a light background of scattered flowers
Subject:	figure female group
Credit:	Gift of Catharine Robb Whyte, O. C., Banff, 1979
Catalogue Number:	ChY.04.01 a-c

Images



This material is presented as originally created; it may contain outdated cultural descriptions and potentially offensive content. [Read more.](#)

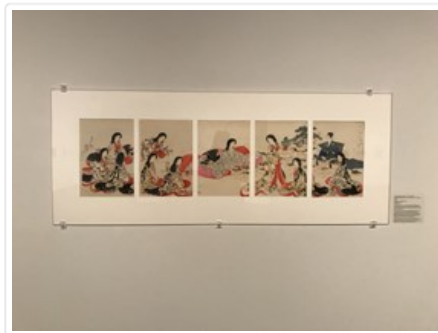


Untitled [Gathering]

<https://archives.whyte.org/en/permalink/artifactchy.04.02%20a-e>

Artist:	Yoshu Chikanobu (1838 – 1912, Japanese)
Title:	Untitled [Gathering]
Date:	1896
Medium:	woodblock on paper
Dimensions:	37.0 x 25.3 cm
Description:	(a)three kneeling ladies in flowing kimonos (b) 37.1x25.3/36.1x23.9 three kneeling ladies in flowing kimonos,two small tables with tall decorated objects are placed in front of the ladies in the lower portion of the image (c)37.0x25.1/36.0x24.0 woman in silver/white kimono with pink/orange lining kneeling in front of several small tables set with foodstuffs (d) 36.0x25.2/35.7x24.1 two ladies, one kneeling, the other standing holding a small table with ceremonial sake cups, behind them are tables set with food items for feast (e) 36.8x25.1/36.3x24.5 a male in blue robes sits behind the feast tables with a lady kneeling in the foreground. The panel of the woman is sliver is the focal point, with the gaze of the ladies and the man in the other panels directed towards her.
Subject:	figure;group;female;male
Credit:	Gift of Catharine Robb Whyte, O. C., Banff, 1979
Catalogue Number:	ChY.04.02 a-e

Images



This material is presented as originally created; it may contain outdated cultural descriptions and potentially offensive content. [Read more.](#)



Fire at the Castle, Life from the Inner Most Court of Chiyoda Castle

<https://archives.whyte.org/en/permalink/artifactchy.04.04%20a-c>

Artist:	Yoshu Chikanobu (1838 – 1912, Japanese)
Title:	Fire at the Castle, Life from the Inner Most Court of Chiyoda Castle
Date:	1896
Medium:	woodblock on paper
Dimensions:	37 x 25 cm
Description:	(a) lady dressed in a black kimono carries a paper lantern and long sword, there is a tall column of smoke behind her, above the roof tops, and shadowy figures (b) 37.4 x 25.7/36.0 x 24.1 two ladies, one mounted on a white horse, the other holding the horse and a long sword in her other hand, both are dressed in black kimonos and wearing tall conical black hats (c) 37.7 x 25.7/35.9 x 24.5 three ladies dressed in black kimonos with tall black hats are all holding long swords, and one has a paper lantern. Horses were brought to Japan from North China and Mongolia.
Subject:	figure group female animal horse
Credit:	Gift of Catharine Robb Whyte, O. C., Banff, 1979
Catalogue Number:	ChY.04.04 a-c

Images



This material is presented as originally created; it may contain outdated cultural descriptions and potentially offensive content. [Read more.](#)



Boating Under Cherry Blossoms

<https://archives.whyte.org/en/permalink/artifactchy.04.12%20a-c>

Artist: Yoshu Chikanobu (1838 – 1912, Japanese)

Title: Boating Under Cherry Blossoms

Date: 1896

Medium: woodblock on paper

Dimensions: 37.0 x 73.0 cm

Description: This triptych features 6 woman on a boat. The boat emerges from the third panel behind a group of rocks. Coming from this group of rocks in the trc is a tree with white blossoms which hangs over the boat, and into the second panel. The boat stretches through the second panel and ends with a sharp tip halfway into the first panel. The women are all in the second and third panels. 5 women are sitting under a covered top, and one woman is standing outside of this covered top with her hand on the ceiling, and her head turned to the left. The sky is uncoloured, and there are 2 birds flying in the first panel.

Subject: Activity

Boating

Figures

Women

Credit: Gift of Catharine Robb Whyte, O. C., Banff, 1979

Catalogue Number: ChY.04.12 a-c

Images



This material is presented as originally created; it may contain outdated cultural descriptions and potentially offensive content. [Read more.](#)



True Beautiful Woman

<https://archives.whyte.org/en/permalink/artifactchy.04.05%20a-c>

Artist: Yoshu Chikanobu (1838 – 1912, Japanese)

Title: True Beautiful Woman

Date: 1897

Medium: woodblock on paper

Dimensions: 37 x 25 cm

Description: (a) a woman holding an oval fan, wearing a sombre kimono and glancing over her right shoulder, her hair is loose and appears to be wet (b) 37.2 x 25.0/30.2 x 21.1 a woman wearing a grey patterned kimono with red lining at the sleeves, and multi-coloured sash, she is well-coiffed and made-up (c) A waist-up portrait of Japanese lady and baby. She wears a patterned mauve kimono with red sash, under dress and red comb and tassel in her hair; also a white flower in her hair. She is holding either a doll or a baby that is dressed in a green kimono with red under-kimono.

Subject: figure, female

Credit: Gift of Catharine Robb Whyte, O. C., Banff, 1979

Catalogue Number: ChY.04.05 a-c

Images



This material is presented as originally created; it may contain outdated cultural descriptions and potentially offensive content. [Read more.](#)



Garden of Autumn Grass

<https://archives.whyte.org/en/permalink/artifacthos.04.01%20a-c>

Artist:	Hosei
Title:	Garden of Autumn Grass
Date:	1897 – 1897
Medium:	woodblock on paper
Dimensions:	37.5 x 72.5 cm
Description:	<p>This panel of 3 pieces features four women in a garden. The first panel depicts a young woman standing at the right side of the panel with her head turned to the right. To her left is a large space of garden. The second panel contains 2 women. The one on the bl is crouching down with her head turned to the right. She holds a small flower. The woman in the tr is sitting on a bench facing left, with her back to the viewer. In the third panel the bench continues, with a woman sitting on the left end of it. She is holding a fan, looking downwards and facing the viewer.</p>
Subject:	<p>group</p> <p>women</p> <p>activity</p> <p>garden</p>
Credit:	Gift of Catharine Robb Whyte, O. C., Banff, 1979
Catalogue Number:	HoS.04.01 a-c

Images



This material is presented as originally created; it may contain outdated cultural descriptions and potentially offensive content. [Read more.](#)



Purse

<https://archives.whyte.org/en/permalink/artifact103.08.0161>

Title:	Purse
Date:	1890 – 1910
Material:	metal; skin; fibre
Dimensions:	24.0 x 1.0 x 14.5 cm
Description:	A brown suede purse which hangs by two straps from a fabric belt. There is a small money holder with a metal frame that fits inside a pocket. The money holder fastens with two snaps. The lining of the purse is stamped with a patent note.
Subject:	tourism
Credit:	Gift of Pearl Evelyn Moore, Banff, 1979
Catalogue Number:	103.08.0161

Images



This material is presented as originally created; it may contain outdated cultural descriptions and potentially offensive content. [Read more.](#)