

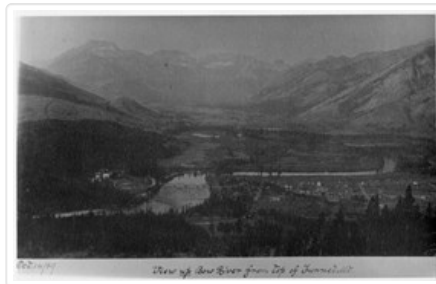


View up Bow River from top of Tunnel Mt.

<https://archives.whyte.org/en/permalink/descriptions52036>

Part Of:	Peter and Catharine Whyte fonds
Description Level:	6 / Item
Fonds Number:	M36 / V683 / S37
Series:	V683 / III / A / 3 : Peter and Catharine Whyte: Various Views of Banff and Area
Sous-Fonds:	V683
Accession Number:	.
Reference Code:	V683 / III / A / 3 / PA - 256
GMD:	Photograph
Date Range:	1899
Physical Description:	Photograph: 1 print ; b&w.
Scope & Content:	<p>Image of Banff and Bow River as seen from Tunnel Mountain - caption along bottom in black ink reads "Oct. 14/89 - View up Bow River from top of Tunnel Mt."</p>
Subject Access:	Banff townsite Tunnel Mountain lookout
Geographic Access:	Banff
Language:	English
Title Source:	Title based on item
Processing Status:	Processed

Images



OrderRemove

This material is presented as originally created; it may contain outdated cultural descriptions and potentially offensive content. [Read more.](#)



Indigenous person washing gold, N. Bend

<https://archives.whyte.org/en/permalink/descriptions32365>

Part Of:	Professional photographers collection
Description Level:	6 / Item
Fonds Number:	V650
Sous-Fonds:	V650
Reference Code:	V650 / 2581 - PD 1 - 43
GMD:	Photograph
Parallel Title:	Indian washing gold, N. Bend
Other Title Info:	Parallel title is original title
Date Range:	1889 Oct. 4
Physical Description:	1 photograph : print, in album
Subject Access:	Discovery and Exploration
Geographic Access:	British Columbia
Creator:	Unknown
Title Source:	Title based on contents of file
Processing Status:	Processed

Images



OrderRemove

This material is presented as originally created; it may contain outdated cultural descriptions and potentially offensive content. [Read more.](#)

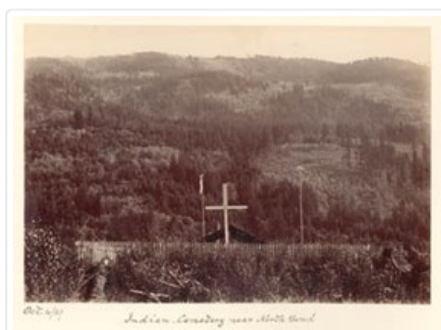


indigenous Cemetery near North Bend

<https://archives.whyte.org/en/permalink/descriptions32366>

Part Of:	Professional photographers collection
Description Level:	6 / Item
Fonds Number:	V650
Sous-Fonds:	V650
Reference Code:	V650 / 2581 - PD 1 - 44
GMD:	Photograph
Date Range:	1889 Oct. 4
Physical Description:	1 photograph : print, in album
Subject Access:	Discovery and Exploration
Geographic Access:	British Columbia
Creator:	Unknown
Title Source:	Title based on contents of file
Processing Status:	Processed

Images



OrderRemove

This material is presented as originally created; it may contain outdated cultural descriptions and potentially offensive content. [Read more.](#)



Indigenous people sun drying salmon on Fraser River

<https://archives.whyte.org/en/permalink/descriptions32367>

Part Of:	Professional photographers collection
Description Level:	6 / Item
Fonds Number:	V650
Sous-Fonds:	V650
Reference Code:	V650 / 2581 - PD 1 - 45
GMD:	Photograph
Parallel Title:	Indians Sun drying Salmon on Fraser River
Date Range:	1889 Oct. 4
Physical Description:	1 photograph : print, in album
Scope & Content:	<p>Pertains to unidentified Indigenous people sun drying salmon on the Fraser River</p>
Subject Access:	Discovery and exploration Indigenous Peoples First Nations
Geographic Access:	British Columbia
Creator:	Unknown
Processing Status:	Processed

Images



OrderRemove

This material is presented as originally created; it may contain outdated cultural descriptions and potentially offensive content. [Read more.](#)



Indigenous person

<https://archives.whyte.org/en/permalink/descriptions32364>

Part Of:	Professional photographers collection
Description Level:	6 / Item
Fonds Number:	V650
Sous-Fonds:	V650
Reference Code:	V650 / 2581 - PD 1 - 42
GMD:	Photograph
Parallel Title:	Siwash Indian
Other Title Info:	Parallel title is original title
Date Range:	1889 Oct. 3
Physical Description:	1 photograph : print, in album
Subject Access:	Discovery and Exploration
Geographic Access:	British Columbia
Creator:	Unknown
Title Source:	Title based on contents of file
Processing Status:	Processed

Images



OrderRemove

This material is presented as originally created; it may contain outdated cultural descriptions and potentially offensive content. [Read more.](#)



Canada and America album fonds

<https://archives.whyte.org/en/permalink/descriptions464>

Part Of:	Canada and America album fonds
Description Level:	1 / Fonds
Fonds Number:	V 388
Sous-Fonds:	V 388
Accession Number:	6261
Reference Code:	V388
GMD:	Photograph Album Negative Photograph print
Responsibility:	Album was compiled by an unknown traveler, possibly British
Date Range:	1889
Physical Description:	1 photograph album (73 prints).-- 7 photographs: copy negatives, b&w
Scope & Content:	<p>Fonds consists of a photograph album titled "Canada and America, 28 Sept. to 14 Dec. 1889" that chronicles a journey through Canada and the United States, specifically the Canadian Rockies, the interior of British Columbia to Vancouver Island, Canada and south through Washington state to California, USA. Views were probably purchased enroute from well-known artists, including Canadian photographers A. B. Thom and C. S. Bailey, and American photographers Taber, Fiske and C. R. Savage.</p> <p>7 b&w copy negatives</p>
Notes:	Purchase was made possible through a grant from the Department of Communications, Government of Canada
Name Access:	Canada and America album
Subject Access:	Environment Exploration, discovery and travel
Access Restrictions:	Some restrictions on access to originals Public domain (other restrictions may apply)
Language:	Language is English
Creator:	Canada and America album
Category:	Environment Exploration, discovery and travel
Title Source:	Title based on title on album
Processing Status:	Processed

This material is presented as originally created; it may contain outdated cultural descriptions and potentially offensive content. [Read more.](#)



Topographical sheet

<https://archives.whyte.org/en/permalink/catalogue24653>

Publisher: Dept. of the Interior
Published Date: 1889
Scale: Scale: 1:40,000
Relief: Contour interval 100 ft.
Medium: Library - Maps and blueprints (unannotated; published)
Map
Subjects: Banff
Notes: Photostatic copy from Public Archives
Accession Number: 675
Call Number: C3-8.13
Collection: Archives Library

This material is presented as originally created; it may contain outdated cultural descriptions and potentially offensive content. [Read more.](#)



(a): Topographical sheets|(b): Original map

<https://archives.whyte.org/en/permalink/catalogue24654>

Publisher: Dept. of the Interior
Published Date: 1889
Scale: Scale: 1:40,000
Relief: Contour interval 100 ft.
Medium: Library - Maps and blueprints (unannotated; published)
Map
Subjects: Anthracite
Notes: (b): 8 dup in map room
Accession Number: 675
400
3069
Call Number: C3-8.14 (a)
C3-8.14 (b)
Collection: Archives Library

This material is presented as originally created; it may contain outdated cultural descriptions and potentially offensive content. [Read more.](#)



Topographical sheet

<https://archives.whyte.org/en/permalink/catalogue24655>

Publisher: Dept. of the Interior
Published Date: 1889
Scale: Scale: 1:40,000
Relief: Contour interval 100 ft.
Medium: Library - Maps and blueprints (unannotated; published)
Map
Subjects: Saddle Mountain
Notes: Photostatic copy from Public Archives
Accession Number: 675
Call Number: C3-8.15
Collection: Archives Library

This material is presented as originally created; it may contain outdated cultural descriptions and potentially offensive content. [Read more.](#)



Topographical Sheet

<https://archives.whyte.org/en/permalink/catalogue24661>

Publisher: Dept. of the Interior
Published Date: 1889
Scale: Scale: 1:40,000
Relief: Contour interval 100 ft.
Medium: Library - Maps and blueprints (unannotated; published)
Map
Subjects: Kananaskis
Notes: Photostatic copy from Public Archives
Accession Number: 675
Call Number: C3-8.21
Collection: Archives Library

This material is presented as originally created; it may contain outdated cultural descriptions and potentially offensive content. [Read more.](#)



Plan shewing the C.A.C. Coy's coal land, Bow River Valley

<https://archives.whyte.org/en/permalink/catalogue24880>

Responsibility: Watts, Th. C. [?]
Publisher: [Anthracite? Th. C. Watts?]
Published Date: 1889
Physical Description: 1 map
Scale: 1 inch = 40 chains
Medium: Library - Maps and blueprints (unannotated; published)
Map
Subjects: Anthracite
Coal and coal mines
Notes: Sgd. Anthracite, Aug. 9th, 1889, Th.[?] C. Watts
Call Number: C14-3.3
Collection: Archives Library

This material is presented as originally created; it may contain outdated cultural descriptions and potentially offensive content. [Read more.](#)



The Great Glacier of the Selkirks

<https://archives.whyte.org/en/permalink/catalogue24915>

Author: Ingersoll, Ernest
Responsibility: Ernest Ingersoll
Publisher: Harper's Weekly
Published Date: 1889
Medium: Library - Book (including soft-cover and pamphlets)
Subjects: Glaciers
Selkirk Mountains
Selkirk Mountains - Hermit Range
Selkirk Range
Selkirk Range - B.C.
Hotels
Canadian Pacific Railway
Canadian Pacific Railway Company
Canadian Pacific Railway Hotels
Travel
Tourism
Geography
Illecillewaet Glacier
Abstract: Pertains to the Selkirk Mountains, Illecillewaete Glacier, Glacier Creek, Sir Donald, the hotel and Canadian Pacific Railway access to the area as of 1889.
Notes: In Harper's Weekly, Vol. XXXIII No. 1702, August 3, 1889, pp. 616 - 618
Accession Number: 7890
Call Number: 02.6 In4t PAM O.S.
Collection: Archives Library

This material is presented as originally created; it may contain outdated cultural descriptions and potentially offensive content. [Read more.](#)



With ice-axe and camera in the Rocky Mountains

<https://archives.whyte.org/en/permalink/catalogue24926>

Responsibility:	Rev. W. Spotswood Green (sketches) Rev. H. Swanzy (photographs)
Publisher:	The Graphic
Published Date:	1889
Medium:	Library - Book (including soft-cover and pamphlets)
Subjects:	Mountaineering Glacier House Travel Tourism Canadian Pacific Railway Canadian Pacific Railway Hotels Lake Louise Lake Louise District Selkirk Mountains Selkirk Range
Abstract:	Pertains to Glacier House and a paper read at the Royal Geographical Society by Rev. W. Spotswood Green who traversed the Selkirks accompanied by Rev. H. Swanzy in 1889 with accompanying photographs/sketches of Beaver Creek, snow shed, Glacier House kitchen staff, aftermath of a snow slide, Mount Bonney, Lower Columbia Lake, goats, Mount Lefroy and Lake Louise, and an avalanche.
Notes:	In The Graphic, October 19, 1889, pp. 484 - 486
Accession Number:	7830
Call Number:	02.6 G75w PAM O.S.
Collection:	Archives Library

This material is presented as originally created; it may contain outdated cultural descriptions and potentially offensive content. [Read more.](#)



Upon the origin of alpine and Italian lakes ; and upon glacial erosion

<https://archives.whyte.org/en/permalink/catalogue26171>

Responsibility: A. C. Ramsay, John Ball, Roderick I. Murchinson, B. Studer, A. Favre, Edward Whymper, and J. W. Spencer.

Publisher: New York : The Humboldt Publishing Co.

Published Date: 1889

Physical Description: 148 pages

Medium: Library - Book (including soft-cover and pamphlets)

Subjects: Switzerland
Italy
Europe
Alps
glaciology
Glaciers
Geology

Accession Number: 2023.47

Call Number: 03.4 R14u

Collection: Archives Library

This material is presented as originally created; it may contain outdated cultural descriptions and potentially offensive content. [Read more.](#)



Handbook of geology for the use of Canadian students

<https://archives.whyte.org/en/permalink/catalogue5302>

Author: Dawson, Sir J. William

Publisher: Montreal : Dawson Brothers

Published Date: 1889

Physical Description: viii, 250p. : ill., maps

Medium: Library - Book (including soft-cover and pamphlets)

Subjects: Paleontology

Accession Number: 20

Call Number: 03.1 D32

Collection: Archives Library

This material is presented as originally created; it may contain outdated cultural descriptions and potentially offensive content. [Read more.](#)



North West Territories

<https://archives.whyte.org/en/permalink/catalogue21501>

Published Date: 1889
Medium: Library - Maps and blueprints (unannotated; published)
Map
Subjects: Mounted Police Stations
Notes: Boundaries of Indian Treaties
Photostatic copy from Public Archives
Accession Number: 675
Call Number: C12-1.27
Collection: Archives Library

This material is presented as originally created; it may contain outdated cultural descriptions and potentially offensive content. [Read more.](#)



Our wild westland : points on the Pacific province

<https://archives.whyte.org/en/permalink/catalogue12922>

Author: Spragge, Arthur (Mrs.)
Published Date: 1889
Physical Description: p.171-173 : ill
Medium: Library - Periodical
Subjects: Banff Springs Hotel
Canadian Pacific Railway
Tourism
Notes: In The Dominion Illustrated [newspaper], vol.3, no.63 (September 1889)
Call Number: P
Collection: Archives Library

This material is presented as originally created; it may contain outdated cultural descriptions and potentially offensive content. [Read more.](#)



Our wild westland : points on the Pacific province

<https://archives.whyte.org/en/permalink/catalogue12923>

Author: Spragge, Arthur (Mrs.)
Published Date: 1889
Physical Description: p.87,93 : ill
Medium: Library - Periodical
Subjects: Canadian Pacific Railway
Chinese
Ethnic groups
Railway stations
Notes: In The Dominion Illustrated [newspaper], vol.3, no.58 (August 10, 1889)
Call Number: P
Collection: Archives Library

This material is presented as originally created; it may contain outdated cultural descriptions and potentially offensive content. [Read more.](#)



Our wild westland : points on the Pacific province

<https://archives.whyte.org/en/permalink/catalogue12924>

Author: Spragge, Arthur (Mrs.)
Published Date: 1889
Physical Description: p.155-156 : ill
Medium: Library - Periodical
Subjects: Canadian Pacific Railway
Glacier House
Notes: In The Dominion Illustrated [newspaper], vol.3, no.62 (September 7, 1889)
Call Number: P
Collection: Archives Library

This material is presented as originally created; it may contain outdated cultural descriptions and potentially offensive content. [Read more.](#)



Our wild westland : points on the Pacific province

<https://archives.whyte.org/en/permalink/catalogue12925>

Author: Spragge, Arthur (Mrs.)
Published Date: 1889
Physical Description: p.183, 189 : ill
Medium: Library - Periodical
Subjects: Banff Springs Hotel
Canadian Pacific Railway
Cave and Basin
Fishing
Notes: In The Dominion Illustrated [newspaper], vol.3, no.63 (September 21,1889)
Call Number: P
Collection: Archives Library

This material is presented as originally created; it may contain outdated cultural descriptions and potentially offensive content. [Read more.](#)