

Four Muskoxen

<https://archives.whyte.org/en/permalink/artifactosh.04.01>

Artist: Osuitok Ipeelee (1923 – 2005, Canadian)

Title: Four Muskoxen

Date: 1959

Medium: ink on paper

Dimensions: 23.7 x 51.8 cm

Description: General colour: brown, yellow on white. Four muskoxen face left. Back legs reach the ground, front legs reach out as if in a gallop.

Subject: muskox
herd

Credit: Gift of Catharine Robb Whyte, O. C., Banff, 1971

Catalogue Number: OsH.04.01

Images



This material is presented as originally created; it may contain outdated cultural descriptions and potentially offensive content. [Read more.](#)



Banff Winter Carnvial

<https://archives.whyte.org/en/permalink/descriptions55755>

Part Of: William Royle fonds

Description Level: 5 / File

Fonds Number: M587 / V808

Series: I.C. Prints - Banff Winter Carnival

Sous-Fonds: V808

Accession Number: 2021.29

Reference Code: V808 / I / C / PA - 01 to PA - 32

GMD: Photograph
Print

Date Range: 1959

Physical Description: 32 photographs : b&w ; 9.5 x 13.3 cm or smaller

History /
Biographical:

See fonds level description

Scope & Content:

File pertains to black and white photographs of the 1959 Banff Winter Carnival. Includes various floats in the parade, an ice sculpture made by Charlie Beil, and the Carnival Queen and her court posed at the Ice Pinnacle on the Bow River.

Name Access: Beil, Charlie

Subject Access: Automobiles
Banff townsite
Banff Winter Carnival
Parade
Winter
Winter Carnival
Women

Geographic Access: Banff
Banff National Park
Alberta

Language: English

Title Source: Title based on contents of file

Processing Status: Processed

This material is presented as originally created; it may contain outdated cultural descriptions and potentially offensive content. [Read more.](#)



Weasel

<https://archives.whyte.org/en/permalink/artifactosh.04.02>

Artist:	Osuitok Ipeelee (1923 – 2005, Canadian)
Title:	Weasel
Date:	1958
Medium:	stonecut and woodcut on paper
Dimensions:	15.1 x 22.7 cm
Description:	General colour: black on blue. A black weasel running from left to right on a blue wood grain background.
Subject:	animal, weasel
Credit:	Gift of Catharine Robb Whyte, O. C., Banff, 1977
Catalogue Number:	OsH.04.02

Images



This material is presented as originally created; it may contain outdated cultural descriptions and potentially offensive content. [Read more.](#)



A view of Boston

<https://archives.whyte.org/en/permalink/artifactunk.04.01>

Artist: Unknown
Title: A view of Boston
Date: 1957
Medium: ink on paper
Dimensions: 35.3 x 48.0 cm
Subject: architecture, urban
Credit: Gift of Catharine Robb Whyte, O. C., Banff, 1979
Catalogue Number: UnK.04.01

Images



This material is presented as originally created; it may contain outdated cultural descriptions and potentially offensive content. [Read more.](#)



[Catharine Whyte and E. Case on beach with palm trees]

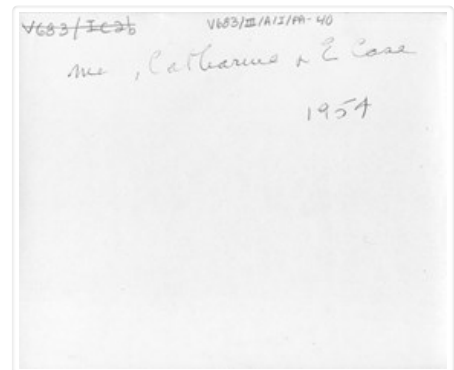
<https://archives.whyte.org/en/permalink/descriptions50175>

Part Of: Peter and Catharine Whyte fonds
Description Level: 6 / Item
Fonds Number: M36 / V683 / S37
Series: V683 / III / A / 1 : Peter and Catharine Whyte: Personal Photographs
Sous-Fonds: V683
Accession Number: .
Reference Code: V683 / III / A / 1 / PA - 40
GMD: Photograph
Print
Date Range: 1954
Physical Description: Photographs: 1 prints; b&w.
Scope & Content:
Image of (left to right) unidentified, unidentified, Catharine Whyte and E. Case on beach in Hawaii.
Name Access: Whyte, Catharine
Subject Access: Beach
Portrait
Geographic Access: Hawaii
Language: English
Title Source: Title based on item
Processing Status: Processed

Images



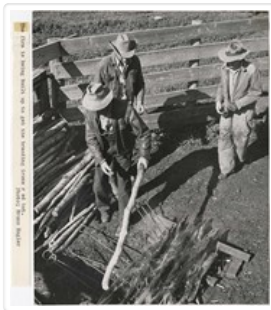
OrderRemove



OrderRemove

This material is presented as originally created; it may contain outdated cultural descriptions and potentially offensive content. [Read more.](#)

Usher's Ranch OVT



<https://archives.whyte.org/en/permalink/descriptions57478>

Part Of: Bruno Engler fonds
Description Level: 5 / File
Fonds Number: M323 / S40 / V190
Series: VI : Retained file, S : Alphabetical order
Sous-Fonds: V190
Sub-Series: v : Sunshine, e : Winter
Accession Number: 7436
Reference Code: V190 / VI / U / i / PA - 01 to PA - 08
GMD: Photograph
Print

Date Range: 1954

Physical Description: 8 photographs : b&w ; 25.2 x 20.2 cm

History /

Biographical:

See fonds level description

Scope & Content:

File pertains to 8 b&w prints of a cattle roundup and branding at Usher's Ranch OVT in Scollard, Alberta. Also includes scenic shots of the surrounding area and an Indigenous gravesite.

Subject Access: Animals
Cattle
Cows
Cowboys
First Nations
Indigenous Peoples
Prairies
Ranch
Ranchers and ranching
Ranches
Ranching
Scenery

Geographic Access: Alberta

Language: English

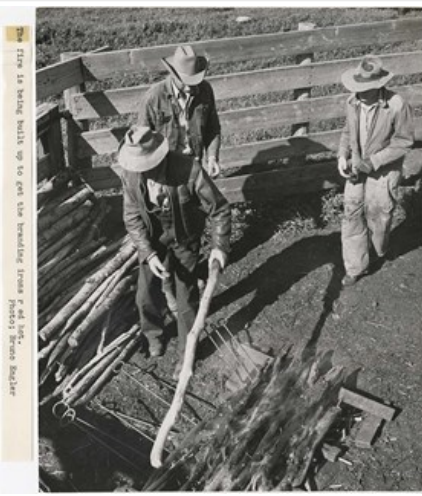
Creator: Engler, Bruno

Title Source: Original title kept

Content Details: PA - 04 and PA - 08 depict an Indigenous grave site [identified by accompanying text included by Bruno Engler] and have not been digitized. Possible restricted access?

Processing Status: Processed

Images



OrderRemove

OrderRemove



OrderRemove

OrderRemove



OrderRemove



OrderRemove



Maycroft Ski Meet

<https://archives.whyte.org/en/permalink/descriptions57493>

Part Of: Bruno Engler fonds
Description Level: 5 / File
Fonds Number: M323 / S40 / V190
Series: VI : Retained file, M : Alphabetical order
Sous-Fonds: V190
Sub-Series: xi : Maycroft Ski Meet
Accession Number: 7436
Reference Code: V190 / VI / M / xi / PA - 01 to PA - 10
GMD: Photograph
Print
Date Range: 1954
Physical Description: 10 photographs : b&w ; 24.8 x 19.9 cm or smaller
History /
Biographical:

See fonds level description

Scope & Content:

File pertains to 10 b&w prints depicting the 1954 Maycroft Ski Meet, including participants, starting area with parking lot, and finish line. The Maycroft Ski Meet was an annual community event held on a hill near the Oldman River that operated as part of carnival events that tied with the crowning of a Carnival Queen at the Banff Winter Carnival. Participants were towed up the hill with a rope tow operated by a tractor. The Meets were eventually phased out following the opening of the (then named) West Castle Mountain Ski Hill in 1965.

Notes: File came from box XVI, separate from alphabetised boxes

Subject Access: Activities
Buildings
Children
Dogs
Mountains
Portrait
Ski areas
Ski lodges and cabins
Ski racing
Skiers
Skiing
Winter
Winter sports
Women

Geographic Access: Alberta

Language: English

Creator: Engler, Bruno
Title Source: Original title kept
Processing Status: Processed

Images



OrderRemove



OrderRemove



OrderRemove



OrderRemove

This material is presented as originally created; it may contain outdated cultural descriptions and potentially offensive content. [Read more.](#)



Stocken family fonds

<https://archives.whyte.org/en/permalink/descriptions33>

Part Of: Stocken family fonds

Description Level: 1 / Fonds

Fonds Number: M 11
V 606

Sous-Fonds: M 11
V 606

Accession Number: 9, 30, 47, 536, 942, 996, 1061

Reference Code: M11 / V606

GMD: Photograph
Print
Textual record
Private record
Scrapbook

Date Range: 1894-1955

Physical Description: 5 cm of textual records. -- 40 photographs : prints

History /
Biographical:

Percy Edward Stocken, 1866-1955, and Eliza J. C. Stocken, 1865-1952, lived in Banff, Alberta, Canada. Percy Stocken was the brother of Canon H. W. G. Stocken.

Scope & Content:

Fonds includes Percy Stocken papers, 1894-1941, and Stocken family photographs, pre-1900. Textual records include legal and financial papers pertaining to Banff and Calgary property, 1924, 1927; scrapbook and other papers re family, literary, religious and personal matters, 1894-1955. Some material concerns Canon H. W. G. Stocken. Photographs are early portraits and family photographs, most unidentified, ca.1870?

Name Access: Stocken, Percy

Subject Access: Family and personal life

Access Restrictions: No restrictions on access
Copyright, privacy, commercial use and other restrictions may apply

Language: Language is English

Finding Aid: Finding aids and reference tools: basic description

Creator: Stocken, Percy

Category: Family and personal life

Title Source: Title based on accession records and contents of fonds

Processing Status: Processed

This material is presented as originally created; it may contain outdated cultural descriptions and potentially offensive content. [Read more.](#)

Luxton family fonds

<https://archives.whyte.org/en/permalink/descriptions588>



Part Of: Luxton family fonds

Description Level: 1 / Fonds

Fonds Number: LUX

Sous-Fonds: LUX

Accession Number: Lux1 - EL estate, 1996
Lux2 - Whyte Museum, 2000
Lux3 - Glenbow Archives, 2001

Reference Code: LUX

GMD: Photograph
Print
Cabinet card
Framed print
Negative
Sound recording
Cassette
Textual record
Corporate record
Private record
Published record
Scrapbook

Other Title Info: Also known as the Eleanor Luxton archives

Date Range: [ca.1860]-1995

Physical Description: ca.32.1 m of textual records (29.3 m textual records, 47 scrapbooks) --
ca.7290 photographs (ca.5300 b&w and col. prints, ca.1915 negatives,
75 transparencies, 2 tintypes) -- 17 albums -- ca.74 cm sound recordings
(29 CDs, 45 audio cassettes, 17 R120 DAT tapes, 1 VHS, 8 voicewriter
discs)

History /

Biographical:

The Norman Luxton family was a prominent family in Banff, Alberta, Canada from 1904 until 1962. Daughter Eleanor Luxton maintained the family's position in the town until her death in 1995.

Publisher and businessman Norman K. Luxton, 1876-1962, was the son of Winnipeg Free Press co-founder William Luxton. After working for the Winnipeg Free Press, Norman Luxton travelled, then joined the Calgary Herald for eight years. In 1901, he journeyed 10,000 miles on the Pacific in the dug-out canoe Tilikum. After becoming ill, Luxton abandoned the trip in Fiji and came to Banff to recuperate. The around-the-world trip was subsequently completed by his sailing partner, Capt. John Voss.

Luxton bought Banff's Crag and Canyon newspaper in 1902 and remained as publisher until 1951. Also in 1902, he established the Sign of the Goat Curio store which specialized in Stoney Indian handicrafts and taxidermy specimens. Other significant Luxton businesses were the King Edward Hotel and Livery, Luxton Bros. insurance (with brother Louis Luxton) and the Lux Block, which included a hotel, the Lux Theatre and retail stores.

In 1904, Norman Luxton married Georgina (Georgie) Elizabeth McDougall, 1870-1965, of the pioneer missionary McDougall family of Morley, Alberta. In addition to her McDougall connections, Georgie Luxton was related by marriage to Senator George Ross. Norman and Georgie Luxton had one child, Eleanor Georgina, born in Banff in 1908.

The Luxtons were important Banff "boosters" with involvement in numerous local organizations and events. Norman Luxton managed the Banff Indian Days from 1909 to 1950, was a founder of Banff Winter Carnival and was involved with native events at the Calgary Stampede for 25 years. In 1953, Norman established a museum to house his native artifacts. The Luxton Museum was built in co-operation with Eric Harvie of the Glenbow Foundation of Calgary. After Luxton's death, the museum continued to be managed by the Glenbow until 1992.

Eleanor Luxton, 1908-1995, was a writer, historian, researcher, engineer, teacher and business woman. After graduating from high school in Banff in 1926, she attended the University of Alberta from 1926 until 1939, receiving degrees in history (BA '30, MA'33), a Diploma in Education (1931) and subsequent education, biology and natural history courses during the summers.

Between 1937 and 1956, Eleanor received further degrees and certificates from studies at Garbutt Business College (Calgary), St. Stephen's College (Edmonton), Ottawa Technical High School, Havergal Ladies College (Ontario), St. George Williams College (Montreal), McGill University (Montreal) and the Banff School of Fine Arts. Subjects studied included office practices, shorthand, machine draughting, English, civil engineering (BSc '46), German, broadcast writing, management, commerce, accounting and commercial law.

Eleanor Luxton's extensive education overlapped and preceded a long and varied professional career. Her teaching career extended from high school teacher in Alberta (Banff and Sexsmith), 1933-1940, to university lecturer in Montreal in the 1950s. During the 1940s, she worked in locomotive design for the CPR in Montreal. Beginning in 1956 and continuing until 1965, when she returned to Banff to care for her mother, Eleanor worked throughout southern Alberta as a field researcher for Calgary's Glenbow Foundation. From 1965 until her death in 1995, Eleanor remained in Banff in her family home and pursued an active career in writing and research.

Scope & Content:

Fonds consists of textual, visual and sound materials pertaining to Norman Luxton, Eleanor Luxton and their family members and friends (including Georgina Luxton, Norman's parents and siblings, and members of the Ross, Graham and McDougall families). Includes correspondence, personal and professional records, financial documents, organization and volunteer records, business and property records, scrapbooks and albums, research materials, candid and professional portraits, various collected materials, and other related content.

Notes:	<p>Fonds consists of three sous-fonds:</p> <p>I. Norman Luxton sous-fonds, [ca.1880]-1962, ca. 7.5 m. of textual records and photographs in four series: A. Correspondence, B. Business, financial and legal, C. Personal, D. Personal and professional, E. Collected materials.</p> <p>II. Eleanor Luxton sous-fonds, [ca.1890]-1995, ca. 15 m. of textual records, sound recordings and photographs in six series: A. Correspondence, B. Professional, C. Personal, D. Business, financial and legal, E. Travel and events, F. Collected materials.</p> <p>III. Luxton family sous-fonds, 1836-1972, ca.6.5 m. of textual records and photographs in four series: A. Norman Luxton family series, [ca.1900-ca.1970]; B. Georgina Luxton series, [ca.1890]-1967; C. Related family series, [ca.1890]-1972; D. Other material series, 1836-1970; E. Luxton family home records [1996].</p>
Name Access:	<p>Luxton, Eleanor</p> <p>Luxton, Georgina</p> <p>Luxton, Norman</p>
Subject Access:	<p>Arts</p> <p>Commerce and industry</p> <p>Education</p> <p>Exploration, discovery and travel</p> <p>Family and personal life</p> <p>First Nations</p> <p>Professional and Personal Life</p> <p>Sports, recreation and leisure</p> <p>Research</p>
Access Restrictions:	<p>Some restriction/s on access</p> <p>Copyright, privacy, commercial use and other restrictions may apply</p>
Reproduction Restrictions:	<p>Copyright, privacy, commercial use and other restrictions may apply</p>
Language:	<p>Language is English</p>
Finding Aid:	<p>Finding aids and reference tools: electronic finding aid for processed material</p> <p>box list for unprocessed material</p>
Creator:	<p>Luxton, Norman</p> <p>Luxton, Georgina</p> <p>Luxton, Eleanor</p>
Category:	<p>Arts</p> <p>Commerce and industry</p> <p>Education</p> <p>Exploration, discovery and travel</p> <p>Family and personal life</p> <p>First nations</p> <p>Sports, recreation and leisure</p>
Title Source:	<p>Title based on contents of fonds</p>
Processing Status:	<p>Processed</p>

4.Eleanor_Foundation.wmv [↗](#)

This material is presented as originally created; it may contain outdated cultural descriptions and potentially offensive content. [Read more.](#)



Canadian Pacific Railway fonds

<https://archives.whyte.org/en/permalink/descriptions685>

Part Of:	Canadian Pacific Railway fonds
Description Level:	1 / Fonds
Fonds Number:	M584 / V782
Sous-Fonds:	V782
Accession Number:	303, 304, 625, 1471, 1086, 1544, 3288, 3502, 6740, 7071, 2014.8366, 2021.18
Reference Code:	M584 / V782
GMD:	Photograph Transparency Lantern slide Print Organization record Textual record
Date Range:	[ca.1900-1950]
Physical Description:	69 b&w lantern slides, 5 cm of textual records, ca. 309 prints : b&w ; 27.9 x 20.3 cm or smaller

Scope & Content:

Fonds consists of visual and textual material pertaining to the Canadian Pacific Railway and its holdings. Visual material consists of two series. Series I: lantern slides, Series II: prints. Textual material consists of two series. Series I: organizational records, Series II: the 1942 film "Canadian Pacific" screenplay and associated documents.

Visual material includes black and white lantern slides and black and white prints depicting various scenes pertaining to travelling on the Canadian Pacific Railway and depict dining rooms, scenes involving trains and mountains, farming scenes and fields, people in train cars, various cities and towns, figures in natural landscapes, horses and horseback riding, mountains, waterfalls, skiing, ships, CP hotels, and other grand buildings [across Canada] such as Notre Dame Cathedral in Montreal.

Textual material includes paper reports [some compiled by Canadian Pacific Hotels Architectural Engineer Ed Steel] detailing various construction and/or renovation projects for hotels, lodges, tea houses, bugalow camps, huts, and backcountry lodges throughout the Canadian Rockies as well as records pertaining to CP hotels in the Canadian Rockies, and the screenplay for "Canadian Pacific."

Notes:	Slides were stored in rectangular wood box with leather handle on top, and metal handle at one end. White label that says "Lyon & Turnbull 432 04 February 2009" on lid of the box. Old, peeling, and stained label on top under handle, illegible. Faded, peeling labels on front, some words legible: "from the Canadian Pacific..." 2 stained and water damaged labels detached from box appear to be English shipping labels. "10" stamped in black on both ends of box. Stamped in black on rear of box: "Canadian Pacific Rly Co. 62 to 65 Charing Cross, London, S.W. 1. "3" engraved on upper rim of box. Box is divided into 3 sections with removable wood separators, small pieces of felt line 2 sections of the box.
Name Access:	Canadian Pacific Railway
Subject Access:	Buildings Buildings and facilities Camps Construction Environment Huts Tourism Trains Transportation
Geographic Access:	Banff National Park Jasper National Park Yoho National Park Glacier Alberta British Columbia Canada
Language:	Language is English
Title Source:	Title based on contents of fonds
Content Details:	Prints and some textual records absorbed from old records V121 and M48. Lantern slides donated to the Whyte Museum by Dr. William and Mrs. Wynn Bensen. The slides were purchased by the Bensens from Lyon and Turnbull in Scotland.
Processing Status:	Processed

This material is presented as originally created; it may contain outdated cultural descriptions and potentially offensive content. [Read more.](#)



Photographs. -- 1887-1970

<https://archives.whyte.org/en/permalink/descriptions700>

Part Of:	Banff School District No. 102 fonds
Description Level:	3 / Series
Fonds Number:	M4 / V44
Sous-Fonds:	M4 / V44
Accession Number:	209 2470 5397, 7999
Reference Code:	V44 / PA / 1 - 137 V44 / PB / 1-3
GMD:	Photograph Print
Date Range:	1887-1970
Physical Description:	140 photographs : prints
Scope & Content:	Photographs pertain to school classes, faculty, activities and town views
Name Access:	Banff School District No. 102
Language:	English
Finding Aid:	Printed inventory available
Related Material:	Constitutes Series VIII of the Banff School District No. 102 fonds
Creator:	Banff School District No. 102
Title Source:	Title based on contents of series
Processing Status:	Processed / Unprocessed

This material is presented as originally created; it may contain outdated cultural descriptions and potentially offensive content. [Read more.](#)



Airline and RR shops, Pacific steamships, Atlantic steamships

<https://archives.whyte.org/en/permalink/descriptions21576>

Part Of: Nicholas Morant fonds
Description Level: 5 / File
Fonds Number: M300 / S20 / V500
Series: I.C. Photography : prints
Sous-Fonds: V500
Accession Number: .
Reference Code: V500 / C1 / 1
GMD: Print
Date Range: [between 1930 and 1980]
Physical Description: 32 photographs : prints, b/w
Scope & Content:

File pertains mainly to Canadian Pacific Railway airline, railway and steamship operations

Geographic Access: Canada
Processing Status: Processed

Images



OrderRemove

This material is presented as originally created; it may contain outdated cultural descriptions and potentially offensive content. [Read more.](#)

Animals

<https://archives.whyte.org/en/permalink/descriptions21578>

Part Of: Nicholas Morant fonds
Description Level: 5 / File

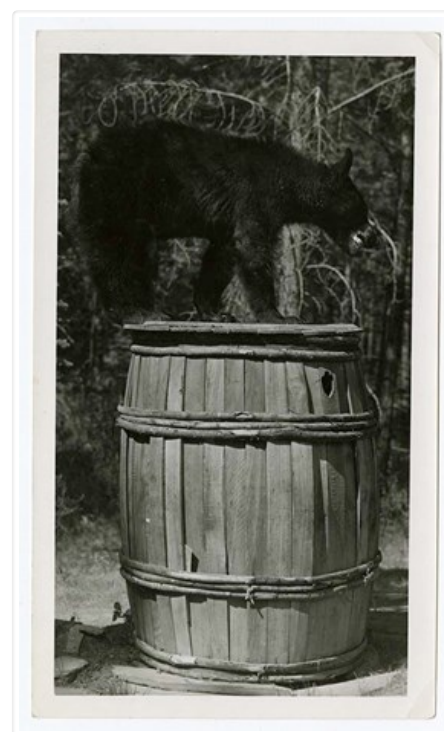


Fonds Number: M300 / S20 / V500
Series: I.C. Photography : prints
Sous-Fonds: V500
Accession Number: .
Reference Code: V500 / C1 / 4, 5
GMD: Print
Date Range: [between 1930 and 1980]
Physical Description: 41 photographs : prints, b/w
Scope & Content:
File pertains mainly to Rocky Mountain wildlife, including bear, moose, mountain sheep, beaver, muskrat, squirrel, osprey, Canada goose and other birds. Also includes domestic sheep, cattle and horses
Geographic Access: Alberta
Processing Status: Processed

Images



OrderRemove



OrderRemove



OrderRemove

This material is presented as originally created; it may contain outdated cultural descriptions and potentially offensive content. [Read more.](#)



British Columbia and Pacific Coast

<https://archives.whyte.org/en/permalink/descriptions21579>

Part Of: Nicholas Morant fonds
Description Level: 5 / File
Fonds Number: M300 / S20 / V500
Series: I.C. Photography : prints
Sous-Fonds: V500
Reference Code: V500 / C1 / 10, 11
GMD: Print
Date Range: [between 1930 and 1980]
Physical Description: 43 photographs : prints, b/w
Scope & Content:
File pertains to scenic views, cities and town, buildings, bridges, ships and boats, totems poles. Includes the following areas: Revelstoke, Kamloops, Thompson Rivers, Nelson, Emerald Lake, Ashcroft, Vancouver, Vancouver Island, Victoria, north coastal BC
Notes: NM note: fibre-based prints made by Nicholas Morant
Geographic Access: British Columbia
Processing Status: Processed

Images

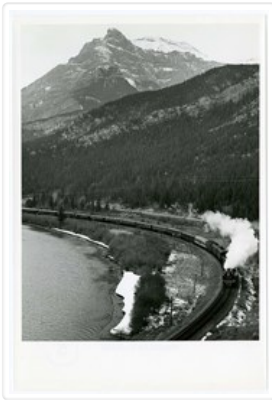


OrderRemove



OrderRemove

This material is presented as originally created; it may contain outdated cultural descriptions and potentially offensive content. [Read more.](#)

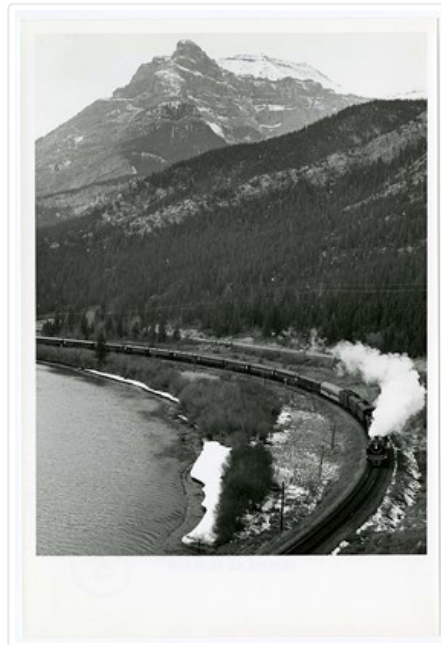


BC train 2860

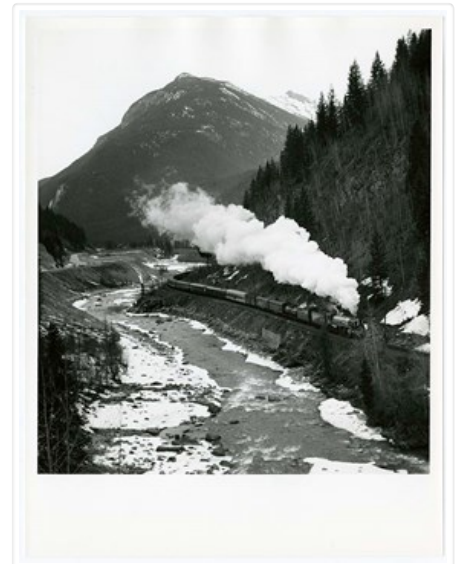
<https://archives.whyte.org/en/permalink/descriptions21580>

Part Of: Nicholas Morant fonds
Description Level: 5 / File
Fonds Number: M300 / S20 / V500
Series: I.C. Photography : prints
Sous-Fonds: V500
Accession Number: .
Reference Code: V500 / C1 / 6
GMD: Print
Date Range: [between 1930 and 1980]
Physical Description: 23 photographs : prints, b/w
Scope & Content:
File pertains to BC museum train, Canadian Pacific Railway. Includes two sets labelled: BC museum train, key set, April 1'78, 14 items; BC train 2860, April 1'78, 9 items
Notes: NM note: fibre-based prints made by Nicholas Morant
Geographic Access: British Columbia
Processing Status: Processed

Images



OrderRemove



OrderRemove

This material is presented as originally created; it may contain outdated cultural descriptions and potentially offensive content. [Read more.](#)



CP logging, oil 1, oil 2

<https://archives.whyte.org/en/permalink/descriptions21582>

Part Of: Nicholas Morant fonds
Description Level: 5 / File
Fonds Number: M300 / S20 / V500
Series: I.C. Photography : prints
Sous-Fonds: V500
Reference Code: V500 / C1 / 12 to 17
GMD: Print
Date Range: [between 1930 and 1980]
Physical Description: 175 photographs : prints, b/w
Scope & Content:
File pertains to Canadian Pacific logging and petroleum operations. Includes set labelled:
CPOG & Forestr'g, 49 prints (folder 13)
Geographic Access: Alberta
British Columbia
Processing Status: Processed

Images



OrderRemove

This material is presented as originally created; it may contain outdated cultural descriptions and potentially offensive content. [Read more.](#)



General mountain scenics

<https://archives.whyte.org/en/permalink/descriptions21586>

Part Of: Nicholas Morant fonds
Description Level: 5 / File
Fonds Number: M300 / S20 / V500
Series: I.C. Photography : prints
Sous-Fonds: V500
Reference Code: V500 / C1 / 27 to 29
GMD: Print
Date Range: [between 1930 and 1980]
Physical Description: 106 photographs : prints, b/w
Scope & Content:

Files consists mainly of mountain views, many with riders or skiers in the Banff area. Also contains some prairie, lake and coastal views

Geographic Access: Alberta
British Columbia
Processing Status: Processed

Images



OrderRemove

This material is presented as originally created; it may contain outdated cultural descriptions and potentially offensive content. [Read more.](#)



Hotels 1, hotel extras 1

<https://archives.whyte.org/en/permalink/descriptions21590>

Part Of: Nicholas Morant fonds
Description Level: 5 / File
Fonds Number: M300 / S20 / V500
Series: I.C. Photography : prints
Sous-Fonds: V500
Reference Code: V500 / C1 / 36 to 39
GMD: Print
Date Range: [between 1930 and 1980]
Physical Description: 121 photographs : prints, b/w

Scope & Content:

File pertains to Canadian Pacific Railway hotels, specifically the Chateau Frontenac, Quebec City; Royal York Hotel, Toronto; Hotel Saskatchewan, Regina; Banff Springs Hotel, Alberta; Chateau Lake Louise, Alberta; Empress Hotel, Victoria; and Empress Hotel Motor Lodge, Victoria. Includes labelled set: BSH public rooms 1966, 2 items (folder 38)

Geographic Access: Alberta
British Columbia
Ontario
Quebec
Saskatchewan

Processing Status: Processed

Images



OrderRemove



OrderRemove

This material is presented as originally created; it may contain outdated cultural descriptions and potentially offensive content. [Read more.](#)



Indigenous Peoples

<https://archives.whyte.org/en/permalink/descriptions21595>

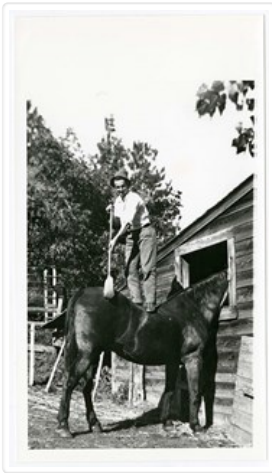
Part Of: Nicholas Morant fonds
Description Level: 5 / File
Fonds Number: M300 / S20 / V500
Series: I.C. Photography : prints
Sous-Fonds: V500
Reference Code: V500 / C1 / 53
GMD: Print
Parallel Title: Indians
Date Range: [between 1930 and 1980]
Physical Description: 17 photographs : prints, b/w
Scope & Content:
File pertains to First Nations, including Banff area, Vancouver Island, Pacific Coast region and northern British Columbia
Geographic Access: Alberta
British Columbia
Processing Status: Processed

Images



OrderRemove

This material is presented as originally created; it may contain outdated cultural descriptions and potentially offensive content. [Read more.](#)



Personal pictures #1

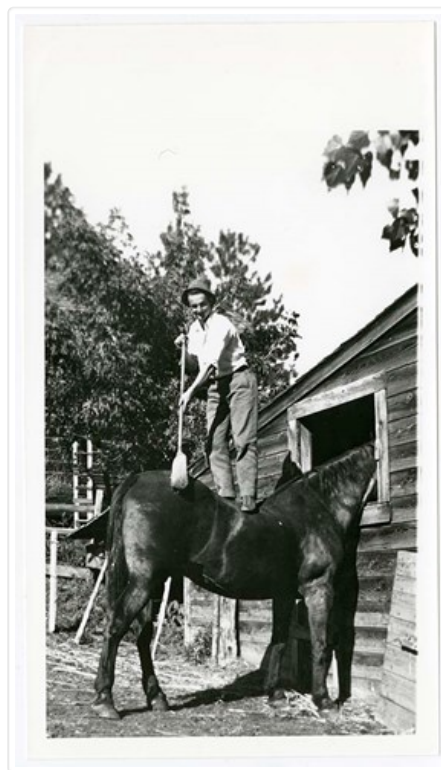
<https://archives.whyte.org/en/permalink/descriptions21602>

Part Of: Nicholas Morant fonds
 Description Level: 5 / File
 Fonds Number: M300 / S20 / V500
 Series: I.C. Photography : prints
 Sous-Fonds: V500
 Reference Code: V500 / C1 / 76
 GMD: Print
 Date Range: [between 1930 and 1980]
 Physical Description: 18 photographs : prints, b/w. -- 1 postcard
 Scope & Content:

File pertains to Nick and Willie Morant, family, friends and activities

Geographic Access: Canada
 Processing Status: Processed

Images



OrderRemove



OrderRemove

This material is presented as originally created; it may contain outdated cultural descriptions and potentially offensive content. [Read more.](#)