



## Canada and America album fonds

<https://archives.whyte.org/en/permalink/descriptions464>

Part Of:	Canada and America album fonds
Description Level:	1 / Fonds
Fonds Number:	V 388
Sous-Fonds:	V 388
Accession Number:	6261
Reference Code:	V388
GMD:	Photograph Album Negative Photograph print
Responsibility:	Album was compiled by an unknown traveler, possibly British
Date Range:	1889
Physical Description:	1 photograph album (73 prints).-- 7 photographs: copy negatives, b&w
Scope & Content:	<p>Fonds consists of a photograph album titled "Canada and America, 28 Sept. to 14 Dec. 1889" that chronicles a journey through Canada and the United States, specifically the Canadian Rockies, the interior of British Columbia to Vancouver Island, Canada and south through Washington state to California, USA. Views were probably purchased enroute from well-known artists, including Canadian photographers A. B. Thom and C. S. Bailey, and American photographers Taber, Fiske and C. R. Savage.</p> <p>7 b&amp;w copy negatives</p>
Notes:	Purchase was made possible through a grant from the Department of Communications, Government of Canada
Name Access:	Canada and America album
Subject Access:	Environment Exploration, discovery and travel
Access Restrictions:	Some restrictions on access to originals Public domain (other restrictions may apply)
Language:	Language is English
Creator:	Canada and America album
Category:	Environment Exploration, discovery and travel
Title Source:	Title based on title on album
Processing Status:	Processed

This material is presented as originally created; it may contain outdated cultural descriptions and potentially offensive content. [Read more.](#)



## Photograph Album

<https://archives.whyte.org/en/permalink/descriptions25330>

Part Of: Boorne and May fonds  
Description Level: 5 / File  
Fonds Number: V10  
Sous-Fonds: V10  
Accession Number: 494  
Reference Code: V10 / PD -1  
GMD: Photograph  
Album  
Photograph print

Date Range: 1889  
Physical Description: 1 photograph album

### Scope & Content:

Photograph: 1889. Album consists of 50 pages of 100 black and white photographs. Photographs also provides descriptions. Small amounts of silver mirroring starting to appear.

### V10 / PD - 1:

- 1- [721. Calgary from the E.]
- 2- [Stephen Clas. Calgary. From W.]
- 3- [716. Indigenous Camp, Winter.]
- 4- [Kananaskis Falls.]
- 5- [Rapids on the Bow at Kananaskis.]
- 6- [675. Kananaskis Falls from above. Winter.]
- 7- [676. The Bow at Kananaskis, Winter.]
- 8- [678. Mouth of Pit and Elevator, Anthracite.]
- 9- [608. C.P.R. At Banff.]
- 10- [663. Cascade Mountain. Banff.]
- 11- [740. Official Plan of the National Park.]
- 12- [641. C.P.R. Hotel. Banff.]
- 13- [720. Banff Hotel from N.]
- 14- [743. Lower Bow Park, from C.P.R. Hotel, Banff.]
- 15- [745. The Spray River, Banff.]
- 16- [751. Spray Bridge and Bow Falls, Banff.]
- 17- [750. Banff Avenue, looking N.]
- 18- [753. Cascade on the Bow, Banff.]
- 19- [719. The Sanitarium. Banff.]
- 20- [754. Upper Hot Springs, Banff.]
- 21- [755. Cascade Mountain from the Sanitarium, Banff.]
- 22- [756. Mount Edith, front Bow River, Banff.]
- 23- [824. The Bow River and Twin Peaks Mountain, Banff.]
- 24- [757. Bird's Eye view of Banff, from Tunnel Mountain.]
- 25- [765. Bow Rapids and C.P.R. Hotel, Banff.]
- 26- [758. Vermilion Lakes, Banff.]
- 27- [760. Vermilion Lakes, Banff.]
- 28- [762. "The Pool," Banff.]
- 29- [748. Interior of Cave, Banff]
- 30- [747. Cave and Basin Buildings, Banff.]
- 31- [766. Devil's Head Canyon and Bridge, Banff.]
- 32- [767. Lake Minnewanka, (Devil's Lake,) Banff.]
- 33- [769. Catch of Fish, Lake Minnewanka, Banff.]
- 34- [782. Lake Minnewanka. W. end, Rocky Mountain Park.]

- 35- [778. "Sundance Canyon," Rocky Mountain Park.]
- 36- [815. "Canyon House" and the "Mountain Belle," Banff]
- 37- [817. C.P.R. Transfer Co's. Stables, Banff.]
- 38- [668. Bridge over the Spray. Banff]
- 39- [665. Tunnel Mountain. Banff.]
- 40- [664. "The Hoodoos." Natural Monuments. Banff]
- 41- [657. Castle Mountain, from C.P.R.]
- 42- [599. Castle Mountain, Rockies.]
- 43- [596. C.P.R. At Castle Mountain]
- 44- [603. Castle Mountain, from C.P.R.]
- 45- [588. Mount LeFroy. Laggan.]
- 46- [598. Mount Hector. Laggan.]
- 47- [593. The Bow below Laggan.]
- 48- [Cathedral Mountain from the west.]
- 49- [586. Cathedral Mountain. 10,284 ft. high.]
- 50- [787. Field, B.C. from C.P.R. Hotel.]
- 51- [578. Field Hotel and Mount Stephen.]
- 52- [577. Mount Field. 8554 ft. high.]
- 53- [580. Mount Stephen and Glacier. 10,525 ft. high.]
- 54- [556. Field (?)]
- 55- [788. Mt. McMullen and Glaciers from the Summit of Boundary]
- 56- [790. Kicking Horse Pass and Van Home Range from summit of Boundary Peak, Rockies, height 9,000 feet.]
- 57- [791. Fairmont Hot Springs and Natural Basin, Kootenai, B.C.]
- 58- [807. "Wild Horse" Gold digging, Kootenai, B.C.]
- 59- [808. "D" Troop N. W.M.P. and pack train crossing the Rockies.]
- 60- [809. "Sam's Landing" and Stage, Kootenai, B.C.]
- 61- [681. Falls on the Kicking Horse. Leanchoile 103ft. high. Winter.]
- 62- [682. Falls on the Kicking Horse. Leanchoile 103ft. high. Winter.]
- 63- [Winter scene in the Rockies.]
- 64- [685. Winter Scene in the Rockies.]
- 65- [686. A Cascadec in Winter in the Kicking Horse Canyon.]
- 66- [687. The Kicking Horse in winter.]
- 67- [601. C.P.R. In the Rockies.]
- 68- [579. Tunnel in Upper Kicking Horse Pass.]
- 69- [604. C.P.R. In the Rockies.]
- 70- [605. C.P.R. In the Rockies.]
- 71- [606. C.P.R. In the Rockies.]
- 72- [607. The Bow River in the Rockies.]
- 73- [597. C.P.R. In the Rockies.]
- 74- [595. C.P.R. In the Rockies.]
- 75- [592. In the Rockies.]
- 76- [562. Bridge over the Kicking Horse.]
- 77- [555. Bridge and Tunnel. Kicking Horse Pass.]
- 78- [568. The Beaverfoot Range.]
- 79- [554. Kicking Horse Pass.]
- 80- [553. Group of section men on hand-car.]
- 81- [552. The Moberly House.]
- 82- [549. Tunnel on C.P.R. west of Donald.]
- 83- [550. The Columbia and Moberly Peak.]
- 84- [612. The Beaver Canyon.]
- 85- [613. The Beaver Canyon.]
- 86- [614. "Hell Gate." Beaver Canyon.]
- 87- [819. Donald, B.C., from Station yard.]
- 88- [821. Round House and Turntable, Donald, B.C.]
- 89- [610. C.P.R. Engines.]
- 90- [703. C.P.R. Engine 73 and train.]

- 91- [C.P.R. Engine 402 and train]
- 92- [705. C.P.R. Engine, 316 and train at Donald, B.C.]
- 93- [606. C.P.R. heavy grade Engine.]
- 94- [739. Official Plan of "The Loop." C.P.R.]
- 95- [651. Mountain Creek Bridge. Selkirks. 164 ft. high, 1086 ft. long.]
- 96- [652. Stony Creek Bridge. Selkirks. 296 ft. high.]
- 97- [648. Surprise Creek Bridge. Selkirks. 180 ft. high.]
- 98- [647. Interior of Snow-shed.]
- 99- [643. Glacier House. Selkirks.]
- 100- [837. Dining Room, Glacier House, B.C.]

Language:

English

Title Source:

Title based on contents of file

Processing Status:

Processed

Electronic Resources



v10\_pd\_1.pdf

Read PDF

Download PDF

Images



OrderRemove



OrderRemove



OrderRemove



OrderRemove



OrderRemove



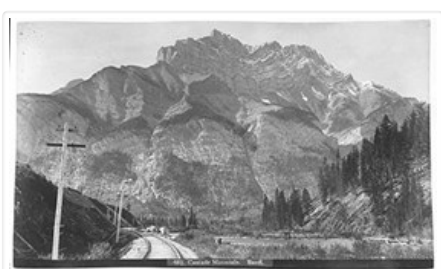
OrderRemove



OrderRemove



OrderRemove



OrderRemove



OrderRemove



OrderRemove



OrderRemove



OrderRemove



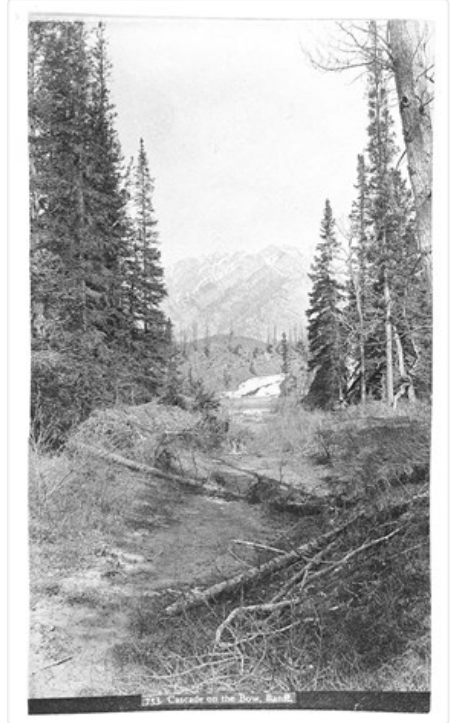
OrderRemove



OrderRemove



OrderRemove



OrderRemove



OrderRemove



OrderRemove

OrderRemove



OrderRemove



OrderRemove



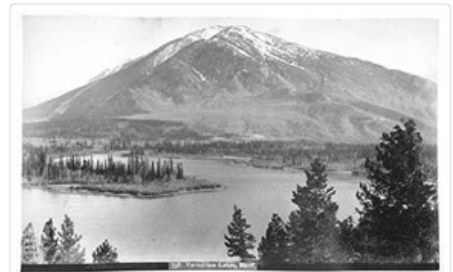
OrderRemove



OrderRemove



OrderRemove



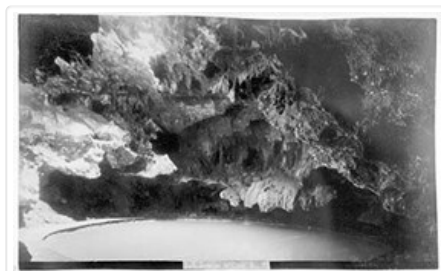
OrderRemove



OrderRemove



OrderRemove



OrderRemove



OrderRemove





OrderRemove



OrderRemove



OrderRemove



OrderRemove



OrderRemove



OrderRemove





OrderRemove



OrderRemove



OrderRemove



OrderRemove



OrderRemove



OrderRemove



OrderRemove



OrderRemove



OrderRemove



OrderRemove



OrderRemove



OrderRemove



OrderRemove



OrderRemove



OrderRemove



OrderRemove



OrderRemove



OrderRemove



OrderRemove



OrderRemove



OrderRemove



OrderRemove



OrderRemove



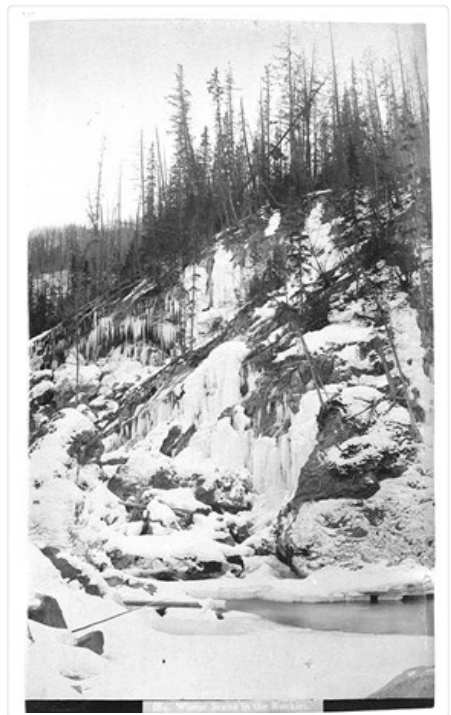
OrderRemove



OrderRemove



OrderRemove



OrderRemove



OrderRemove

OrderRemove



OrderRemove



OrderRemove



OrderRemove



OrderRemove



OrderRemove



OrderRemove



OrderRemove



OrderRemove



OrderRemove



OrderRemove



OrderRemove



OrderRemove



OrderRemove



OrderRemove



OrderRemove



OrderRemove



OrderRemove



OrderRemove



OrderRemove



OrderRemove



OrderRemove



OrderRemove



OrderRemove



OrderRemove



OrderRemove





OrderRemove



OrderRemove



OrderRemove



OrderRemove



OrderRemove



OrderRemove



OrderRemove



OrderRemove



OrderRemove



OrderRemove



This material is presented as originally created; it may contain outdated cultural descriptions and potentially offensive content. [Read more.](#)



## Robert E. Campbell fonds

<https://archives.whyte.org/en/permalink/descriptions3>

Part Of: Robert E. Campbell fonds

Description Level: 1 / Fonds

Fonds Number: M 22  
V 3

Sous-Fonds: M 22  
V 3

Accession Number: 7048

Reference Code: M22 / V3

GMD: Photograph  
Framed print  
Photograph print  
Textual record  
Private record

Date Range: 1888-[ca.1955]

Physical Description: 3 textual records. -- 14 photographs : prints

History /  
Biographical:

Robert (Bob) E. Campbell, 1871-1965, was a teacher, guide and outfitter, politician and soldier at Banff, Calgary, Peace River and Victoria. Campbell was born in Ontario and taught school in Saskatchewan from 1893 to 1896 before coming to Banff to teach at Tom Wilson's request. Beginning in 1897, he worked summers for Wilson as a trail hand. He then guided major clients, forming Wilson and Campbell in 1902 and buying the business in 1904. Campbell became involved in the Calgary Grain Exchange in 1908 and became the provincial MLA for Rocky Mountain in 1913. After serving in WWI, he ranched, guided and wrote a book of reminiscences, "I Would Do It Again: Reminiscences of the Rockies."

### Scope & Content:

Photographs include portraits of Tom Wilson, 1930s, and Bob Campbell, ca.1955; Vaux family landscape views, 1902; and Canadian Pacific Railway views, ca.1903. CPR views are four prints incorporated into one large framed item; views are of the Crow's Nest Pass, the Banff Springs Hotel and the Lake Louise Chalet, ca.1903. Textual items are invitation for Calgary Old Timers Association, 1908; and greeting cards, ca.1907.

Name Access: Campbell, Robert E.

Subject Access: Family and personal life

Access Restrictions: No restrictions on access  
Copyright, privacy, commercial use and other restrictions may apply

Language: Language is English

Creator: Campbell, Robert E.

Category: Family and personal life  
Title Source: Title based on contents of file  
Processing Status: Processed

This material is presented as originally created; it may contain outdated cultural descriptions and potentially offensive content. [Read more.](#)



## Banff School District No. 102 fonds

<https://archives.whyte.org/en/permalink/descriptions11>

Part Of: Banff School District No. 102 fonds  
Description Level: 1 / Fonds  
Fonds Number: M4  
V44  
Sous-Fonds: M4  
V44  
Accession Number: 209, 2193, 2305, 2470, 2561, 2889, 2980, 3178, 3272, 3750, 4026, 5140, 5397, 5536, 7999  
Reference Code: M4 / V44  
GMD: Photograph  
Photograph print  
Textual record  
Government record  
Date Range: 1887-1986  
Physical Description: ca.7.5 m of textual records. -- ca.144 photographs : prints  
History /  
Biographical:

The Banff School District No.102 provided elementary and secondary education for Banff and area from 1887 until 1994, when it was replaced by the Canadian Rockies Regional Division No.12. During the 1970s and 1980s the district assumed, in the absence of a municipal government, responsibilities for aspects of local government as well as school administration. After 1990, the district's responsibilities strictly pertained to public education.

### Scope & Content:

Fonds consists mainly of textual records in the form of minutes, 1895-1983; miscellaneous administrative files on school operations and local government, 1920-1979; legal and financial records, 1888-1979; assessment and tax rolls, 1901-1972, 19 v.; attendance registers, 1888-1986, 987 v.; an anniversary issue of the Banff High School by The Cascadian, 1913-1933 containing a brief history of the school and autographs; and Robert D. Townsend trustee and chairman records, 1968-1977. Local government-related bodies referred to include: Banff Joint Committee on Future Townsite Administration, Banff Advisory Council, Banff Townsite Provisional Administration Board and Banff Townsite Options Review Committee. Townsend records consist of school board trustee and chairman files, 1968-1977, and local government information files assembled by Townsend, 1973-1977. Photographs pertain to school classes, faculty, activities and town views; 1887-1970.

Name Access: Banff School District No. 102  
Banff Community High School

Subject Access:	Education Government
Access Restrictions:	Some restriction/s on access Copyright, privacy, commercial use and other restrictions may apply
Language:	English
Finding Aid:	Finding aids and reference tools: series and file description
Related Material:	Portion of fonds is related to Banff Joint Committee on Future Townsite Administration sound recording (S30) and Banff Townsite Provisional Administration Board fonds (M347)
Creator:	Banff School District No. 102
Category:	Education Government
Title Source:	Title based on contents of fonds
Processing Status:	Processed Unprocessed

This material is presented as originally created; it may contain outdated cultural descriptions and potentially offensive content. [Read more.](#)



## Brett family fonds

<https://archives.whyte.org/en/permalink/descriptions14>

Part Of:	Brett family fonds
Description Level:	1 / Fonds
Fonds Number:	M1 V83
Sous-Fonds:	M1 V83
Accession Number:	5, 20, 58, 78, 102, 354, 1164, 1532, 5042, 2022.35
Reference Code:	M1 / V83
GMD:	Photograph Album Negative Photograph print Textual record Diary Private record Published record Scrapbook
Date Range:	[ca.1860]-1965
Physical Description:	73 cm of textual records. -- 11 photograph albums (ca.850 prints). -- ca.350 photographs (ca.320 prints, 28 negatives)

## History /

### Biographical:

Robert George Brett, 1851-1929, was a prominent physician, hotel-hospital owner, businessman and politician Banff, Alberta from 1883 until 1929. Brett was born in Strathroy, Ontario, son of James Brett and Catherine Mallon. He was educated as a physician at the University of Toronto (M.D., 1874), and practiced medicine at Arkona, Ontario. He moved to Winnipeg in 1880, where he helped found the Manitoba Medical College.

R. G. Brett moved to Banff in 1886, founding the Banff Sanitarium. In 1909 he established the Brett Hospital. Brett also had numerous other businesses and real estate in Banff (including the National Park Drug Store, the Sanitarium Bottling Co., the Bretton Hall Hotel, Lithia Bottling Co.) and elsewhere.

In 1878, Brett married Louise Theodora Hungerford, 1855-1935, of Waterford, Ontario. Of their five children, only two survived infancy, Reginald H. "Harry", 1879-1925, and Robert Earle, 1887-1912. Earle Brett was survived by Maidie (Stacpole) Brett, whom he married in 1910, and by an infant daughter. Dr. Harry Brett was married to Helen Brett, 1877-1964, who outlived the rest of her family by many years. Associated closely with the Brett family was Dr. Brett's nurse, Annie McLauchlin.

From 1881 to 1901, R. G. Brett was Conservative Member of the Legislative Assembly (MLA) for the North-West Territories, and from 1889 to 1891 he was president of the executive council. He was Lieutenant-Governor of Alberta from 1915 to 1925. He died in Calgary.

### Scope & Content:

Fonds contains six series:

I. Robert G. Brett series, 1873-1926, 36 cm of textual records, consisting of: A. Personal papers, 1873-1926 (1. Correspondence, 2. Financial papers, 3. Other papers); B. Business papers, 1897-1925, (1. Banff businesses, 2. Businesses outside Banff); C. Professional papers, 1889-1925 (1. Political correspondence, 2. Official correspondence, 3. Other material);

II. Louise H. Brett series, [between 1855 and 1935], 10 cm of textual records, consisting of: A. Writing, betw. 1885 and 1935; B. Scrapbooks, ca. 1900, ca. 1910; C. Diaries and letters, 1912-1925; D. Other, ca. 1870-1924.

III. Reginald H. "Harry" Brett series, ca. 1910-1921, 10.5 cm of textual records, print material and photographs. Consists of: A. Personal papers, ca. 1910 (1. Scrapbooks, 2. Ephemera); B. Business papers, 1912-1921.

IV. Helen Brett series, 1925-1965, 4.5 cm of textual records, consisting of: A. Correspondence, 1927-1950; B. R. G. Brett estate papers, 1925-1949; C. Financial and business records, 1936-1962; D. Other, 1935-1965.

V. Brett family series, [ca. 1860-ca. 1935], consisting of: A. Photographs albums, ca. 1860-ca. 1910; B. Photographs, ca. 1875-ca. 1935.

VI. Other material series, [before 1928], 2 cm of textual records, consisting of: A. Annie McLauchlin papers, 1914-1928; B. Other, before 1925.

Name Access: Brett, Helen

Brett, Louise

Brett, Reginald H. (Harry)

Brett, Robert G.

McLauchlin, Annie

Subject Access: Family and personal life

Health services

Politics

Access Restrictions: Some restrictions on access to originals

Copyright, privacy, commercial use and other restrictions may apply

Language: Language is English

Finding Aid: Finding aids and reference tools: arrangement outline  
series and file description  
electronic finding aid  
microfilm copies of albums

Creator: Brett, Robert George and Louise  
Brett, Reginald H. (Harry) and Helen

Category: Family and personal life  
Health services  
Politics

Biographical Source Notes: Earlier version of fonds description.

Title Source: Title based on contents of fonds

Processing Status: Processed

This material is presented as originally created; it may contain outdated cultural descriptions and potentially offensive content. [Read more.](#)



## Pat Brewster fonds

<https://archives.whyte.org/en/permalink/descriptions15>

Part Of: Pat Brewster fonds

Description Level: 1 / Fonds

Fonds Number: M2 / V91 / S21

Sous-Fonds: V91

Accession Number: 12, 13, 80, 93, 110, 145, 340, 380, 899, 1006, 1110, 1179, 1210, 1235, 1398, 1409, 1440, 1505, 1784, 1874, 2176, 2216, 2303, 2361, 2410, 2643, 2791, 2816, 2880, 2903, 2933, 2940, 3051, 3157, 3181, 3393, 3642, 3733, 3734, 3780, 3821, 3921, 3969, 5028, 5336, 6018

Reference Code: M2 / S21 / V91

GMD: Photograph  
Album  
Negative  
Photograph print  
Postcard  
Transparency  
Sound recording  
Cassette  
Textual record  
Drawing  
Map  
Poster  
Private record

Date Range: 1841-1983

Physical Description: ca.80 cm of textual material. -- ca.900 photographs : prints, postcards, transparencies, negatives, copy negatives. -- 1 photograph album (50 prints). -- 3 sound recordings : audio tape cassettes

History /

Biographical:

Forrest Oliver "Pat" Brewster, 1896-1982, was a trail guide, outfitter and businessman in Banff, Alberta, Canada. Pat was a native and life-long resident of Banff. As a boy, he was an active Boy Scout and, by age seventeen, was a big game guide. After serving in World War I, Brewster established the first permanent camp at Lake O'Hara for the Canadian Pacific Railway. In 1926, he took over the Brewster Transport Company outfitting business from his brothers, Bill and Jim. In the 1930s, he became involved in skiing explorations in the Assiniboine, Skoki and Sunshine areas. Pat Brewster was active in community affairs and, in his later years, was an avid historian of the region. He published three books of reminiscences between 1975 and 1982.

Scope & Content:

Fonds consists of four series: I. Personal, II. Professional, III. Activities, IV. Brewster family.

I. Personal series, 1905-1982, 18 cm of textual records, 160 photographs, 2 sound recordings. Includes correspondence, interview and recorded conversation, address/notebook, artwork, other textual records, photographs.

II. Professional series, 1892-1982, 47.5 cm of textual records, 266 photographs, 1 sound recording. Includes papers pertaining to various Brewster family and other businesses, writing papers and sound recording, and photographs pertaining to guiding and outfitting, tourism promotion and other.

III. Activities series, 1841-1983, 6.5 cm of textual records, 262 photographs. Pertains to genealogical research, other activities and collected material.

IV. Brewster family series, 1841-1981, 2.5 cm of textual records, 132 photographs. Pertains to Brewster family, Jack Brewster, John Brewster, Pearl Brewster Moore and the Moore family.

Name Access: Brewster, Pat

Subject Access: Commerce and industry  
Family and personal life  
Sports, recreation and leisure

Access Restrictions: Some restrictions on access to originals  
Copyright, privacy, commercial use and other restrictions may apply

Language: English

Finding Aid: Finding aids and reference tools: arrangement outline  
series and file description  
electronic finding aid  
reference copies and summaries for sound recordings

Creator: Brewster, Pat

Category: Commerce and industry  
Family and personal life  
Sports, recreation and leisure

Title Source: Title based on contents of fonds

Processing Status: Processed

This material is presented as originally created; it may contain outdated cultural descriptions and potentially offensive content. [Read more.](#)



## Lawrence Grassi fonds

<https://archives.whyte.org/en/permalink/descriptions18>

Part Of:	Lawrence Grassi fonds
Description Level:	1 / Fonds
Fonds Number:	M 45 V 240
Sous-Fonds:	M 45 V 240
Accession Number:	249, 282, 830, 1626, 1943, 2262, 2826, 3159, 3446, 3985
Reference Code:	M45 / V240
GMD:	Photograph Album Negative Photograph print Transparency Textual record Private record Published record
Date Range:	[ca.1880]-1979
Physical Description:	ca.25 cm of textual records. -- ca.2300 photographs : prints, transparencies, negatives. -- 1 photograph album (180 prints)

### History /

#### Biographical:

Lawrence Grassi, 1890-1980, was a miner and mountaineer at Canmore, Alberta, Canada. Grassi was born in Falmenta, Italy and emigrated to Canada in 1912, working first as a section man for the Canadian Pacific Railway and from 1916 to 1945 as a miner for Canmore Mines. Grassi distinguished himself in solo mountain climbing and as an unofficial guide to many other mountaineers. Grassi is best remembered for trail building activities. J. S. Woodsworth led support for legislation to change the name of Twin Lakes in White Man Pass to Grassi Lakes in recognition of this work. As assistant warden at Lake O'Hara, British Columbia, Grassi upgraded and built numerous trails for which he received many honours in later life.

#### Scope & Content:

Fonds consist of papers and photographs produced and collected by Lawrence Grassi.

Textual records consist of correspondence, 1918-1979, from family in Italy and organizations and individuals in Canada; personal papers, 1912-1975; publications and ephemera from organizations, including the Alpine Club of Canada, Canadian Youth Hostels Association, Skyline Trail Hikers of the Canadian Rockies; newsclippings, articles and other material pertaining to Grassi and mountaineering.

Photographs pertain mainly to mountain scenery of Alberta and British Columbia, particularly Banff National Park, Lake O'Hara and region, Jasper National Park, Mount Assiniboine and region, Grotto Mountain and Grassi Lakes, ca.1930-ca.1970. Also includes views of Lawrence Grassi, family and friends, ca.1880-ca.1970, and group of unidentified portraits, ca.1880-ca.1900. Transparencies are mainly unidentified colour mountain scenics. Most views are by Grassi; some are by Richard Rushworth and F. V. Longstaff.

Name Access: Grassi, Lawrence



Subject Access:	Alpine Club of Canada Environment Family and personal life Mountaineering Sky Line Trail Hikers of the Canadian Rockies Sports, recreation and leisure
Access Restrictions:	No restrictions on access Copyright, privacy, commercial use and other restrictions may apply
Language:	Language is primarily English. Some correspondence is in Italian
Finding Aid:	Finding aids and reference tools: arrangement outline file description and index for photographs electronic finding aid
Creator:	Grassi, Lawrence
Category:	Environment Family and personal life Sports, recreation and leisure
Title Source:	Title based on contents of fonds
Processing Status:	Processed

This material is presented as originally created; it may contain outdated cultural descriptions and potentially offensive content. [Read more.](#)



## Hollingworth Tully Montgomery fonds

<https://archives.whyte.org/en/permalink/descriptions25>

Part Of:	Hollingworth Tully Montgomery fonds
Description Level:	1 / Fonds
Fonds Number:	M 6 V 436
Sous-Fonds:	M 6 V 436
Accession Number:	2, 4, 47, 437, 536, 772, 942, 996, 1061, 1196, 1462, 1526, 1528, 1573, 1884, 2168, 2413, 2504
Reference Code:	M6 / V436
GMD:	Photograph Negative Photograph print Textual record Private record Published record
Date Range:	1883-1965
Physical Description:	4 cm of textual records. -- 288 photographs : prints, negatives

## History /

### Biographical:

Rev. Canon Hollingworth Tully Montgomery, 1885-1965, was an Anglican minister at Banff, Alberta, Canada. Montgomery was born in Fredericton, New Brunswick and educated in Atlantic Canada and England. He succeeded his father, Canon Henry Montgomery, as rector of St. George's in the Pines Anglican Church in Banff in 1924, a position which he held until his retirement in 1955. In 1939, he conducted a service for King George VI and Queen Elizabeth during the royal visit to Banff. Montgomery was married to Mary Ruth Montgomery and had two children.

### Scope & Content:

Fonds consists of sermons, correspondence, personal papers, clippings, photographs and ephemera. Textual records pertain to St. George's Church, the 1939 royal visit, Banff residents, etc. Also includes letters collected by Montgomery from artist Norman Rockwell to Barbara Clyne, 1943-1945. Photographs collected by Montgomery pertain to Banff events, people and visitors, church staff and visitors, Rev. Montgomery and family with visiting dignitaries; 1911-1952.

Name Access:	Montgomery, Hollingworth Tully
Subject Access:	Community life Religions
Access Restrictions:	No restrictions on access Copyright, privacy, commercial use and other restrictions may apply
Language:	Language is English
Finding Aid:	Finding aids and reference tools: basic description
Creator:	Montgomery, Hollingworth Tully
Category:	Family and personal life Religions
Title Source:	Title based on contents of fonds
Processing Status:	Processed

This material is presented as originally created; it may contain outdated cultural descriptions and potentially offensive content. [Read more.](#)



## Round family fonds

<https://archives.whyte.org/en/permalink/descriptions29>

Part Of:	Round family fonds
Description Level:	1 / Fonds
Fonds Number:	M 15 V 547
Sous-Fonds:	M 15 V 547
Accession Number:	74, 2026, 2231, 3187, 3225
Reference Code:	M15 / V547

GMD:	Photograph Album Negative Photograph print Transparency Textual record Private record
Date Range:	1887-1967
Physical Description:	11 cm of textual records. -- 371 photographs (223 negatives, 130 prints, 18 transparencies). -- 1 photograph album (ca.80 prints)
History / Biographical:	<p>William E. Round (Bill Round Sr.), formally known as William John? Eley-Round, 1883-1967, was a musician and journalist at Banff, Alberta, Canada. Round came to Banff before 1918, where he established and operated the Banff Academy of Music, 1920-1958, served as a CPR press representative and was Banff correspondent for the Albertan newspaper of Calgary from 1930-1965. Bill Round Sr. was married to Elsie (Squair) Round, formally Espeth Eley-Round, 1891-1965. The Rounds raised two children, Doreen and Bill Jr., and two grandchildren, Doreen and Eileen Wickens. F. W. E. Round (Bill Round Jr.), formally Francis William Eley-Round, 1918-1978, was a photographer and film-maker at Banff, Alberta and Victoria, British Columbia, Canada.</p>
Scope & Content:	<p>Fonds includes Bill Round Sr. papers, Bill Round Sr. photographs, Bill Round Jr. photographs and Round family photographs.</p> <p>Textual records consists of Bill Round Sr. literary papers, ca.1925-1967; personal papers, 1922-1967; and other papers, 1887-1966. Material is mainly research materials, manuscripts and correspondence resulting from Round's literary career. Content concerns human and natural history of the Rockies, including: Banff tourist information, Canadian Pacific Railway construction and surveys, crime, Norman Luxton, William McCardell, A. B. Rogers, A. L. Rogers, George Simpson and Tom Wilson.</p> <p>Photographs include: I. Round family photographs, including Bill, Elsie, Doreen, Bill Jr. and friends and activities, 1915-1940, 106 items. II. Bill Round Sr. and Bill Round Jr. negatives of people and events, Banff and area, ca.1925-1955, 205 items; includes some copies. III. Negatives by Bill Round Jr., portraits of ski associates, 1937-1939, 18 items. IV. Transparencies by Bill Round Jr., scenic views, wildlife and people, n.d., 18 items; includes two views of Peyto Lake by Ted MacAulay. V. Prints collected by Bill Round Sr. regarding people, places and events, Banff and area, ca.1890-1930, 25 items.</p>
Name Access:	Round, F. W. E. (Bill) Jr. Round, William E. (Bill) Sr.
Subject Access:	Arts Family and personal life
Access Restrictions:	No restrictions on access Copyright, privacy, commercial use and other restrictions may apply
Language:	Language is English
Finding Aid:	Finding aids and reference tools: basic description reference copy prints
Creator:	Round, F. W. E. (Bill) Jr. Round, William E. (Bill) Sr.

Category: Arts  
Family and personal life  
Title Source: Title based on contents of fonds  
Processing Status: Processed

This material is presented as originally created; it may contain outdated cultural descriptions and potentially offensive content. [Read more.](#)



## Norman Sanson fonds

<https://archives.whyte.org/en/permalink/descriptions31>

Part Of: Norman Sanson fonds  
Description Level: 1 / Fonds  
Fonds Number: M3  
V246  
Sous-Fonds: M3  
V246  
Accession Number: 109, 148, 181, 334, 384, 400, 439, 448, 1036, 1148, 1191, 2072, 2484, 2594, 2771, 3028, 6351, 6739, 8096  
Reference Code: M3 / V246  
GMD: Photograph  
Album  
Photograph print  
Postcard  
Textual record  
Diary  
Map  
Private record  
Published record  
Scrapbook  
Date Range: 1855-1949  
Physical Description: ca.55 cm and 21 v. of textual records. -- 46 photograph albums (ca.7500 prints). -- 1 postcard set (37 prints)

## History /

### Biographical:

Norman Bethune Sanson, 1862-1949, was a naturalist, meteorologist and museum curator at Banff, Alberta, Canada. Born in Toronto, Ontario, the son of a prominent clergyman, he developed a life-long interest in natural history as a boy. Sanson came west in 1885 to fight in the Riel Rebellion as a member of the Queen's Own Rifles.

In 1892, Sanson came to Banff as an accountant for the Sanitarium Hotel. He also did book-keeping for other local businesses and handled the town's weather reports. In 1896 he was appointed curator of the Park Museum and also worked as zookeeper for the Banff Zoo. From 1896 until 1931, Sanson was meteorological officer and curator of the Park Museum. In 1903 an observatory was built on Sulphur Mountain on a site chosen by Sanson. During the period 1903-1931, Sanson made one thousand ascents of Sulphur Mountain to collect weather records. In 1948, the Dominion Government acknowledged his many years of service by naming a peak on the mountain for him.

As a nature enthusiast, Sanson was well-known both in Banff and beyond. He was an avid collector of flora and fauna, both privately and through his job as museum curator. Sanson was an active member of the Alpine Club of Canada, the Skyline Hikers of the Canadian Rockies and the Banff Rotary Club. He was a warden of St. George's Anglican Church and a supporter of the Canadian Bible Society. He was active in community events such as the Banff Winter Carnival, for which he organized and led the snowshoeing events. An ardent mountain traveller, he enjoyed both hiking and snowshoeing. Following retirement, Sanson toured extensively on foot throughout Britain and Europe.

### Scope & Content:

Fonds consists of papers and photographs resulting from Sanson's life and work.

Textual records consist of: I. Correspondence, 1901-1944, 2 cm.; II. Research and professional papers, 1890-1947, 45 cm., includes notebooks and notes pertaining to nature study, meteorological research, Sulphur Mountain and maps; III. Travel diary, 1900-1933, 1 cm.; IV. Register books, 1931, 1941, n.d. 2 cm.; V. Scrapbooks, 1909-1931, n.d., 21 vol, many containing postcards from Great Britain and around the world; VI. Miscellaneous, 1855-1895, n.d., 4 cm.

Photographs consist of: I. Albums, 1880s-1949, 46 v., pertain to Norman Sanson's life and work; document Banff Park Museum, Sulphur Mountain and Sulphur Mountain Observatory; natural history, including mountain flora, collecting trips, weather surveys and snow surveys; Banff events, including Banff Winter Carnival, Banff Indian Days, Highland Gatherings and Banff Regatta; mountain travels and travels throughout Canada, United States, England and Europe; friends, associates and Banff personalities. Detailed identifications provided by Norman Sanson. II. Postcard set, ca.1930.

Name Access:	Sanson, Norman
Subject Access:	Environment Exploration, discovery and travel Science and technology
Access Restrictions:	Some restrictions on access to originals Copyright, privacy, commercial use and other restrictions may apply
Language:	Language is English
Finding Aid:	Finding aids and reference tools: arrangement outline series description and partial file description reference microfilm copies of photographs albums and some textual materials
Creator:	Sanson, Norman

Category: Environment  
Exploration, discovery and travel  
Science and technology  
Title Source: Title based on contents of fonds  
Processing Status: Processed

This material is presented as originally created; it may contain outdated cultural descriptions and potentially offensive content. [Read more.](#)



## Sibbald-Hunter families fonds

<https://archives.whyte.org/en/permalink/descriptions32>

Part Of: Sibbald-Hunter families fonds  
Description Level: 1 / Fonds  
Fonds Number: M 40  
V 574  
Sous-Fonds: M 40  
V 574  
Accession Number: 249, 1077[removed - V804]  
Reference Code: M40 / V574  
GMD: Photograph  
Photograph print  
Tintype  
Textual record  
Private record  
Date Range: [ca.1870], 1925-1948  
Physical Description: 8.5 cm of textual records. -- ca.75 photographs : prints, tintypes  
History /  
Biographical:

Andrew Sibbald came to Alberta in 1875 with Rev. George McDougall to become the province's first teacher, teaching at Morley until 1896. He retired to Banff in 1909, where he celebrated his one hundredth birthday in 1933. George Hunter, son-in-law of Howard Sibbald (Andrew's son), came to Banff in 1905, served as Park Superintendent (1908-1910) and town magistrate (1922-1942); Leanore Hunter was his daughter.

### Scope & Content:

Fonds consists of Andrew Sibbald papers, including correspondence, 1925, 1932, mainly with William Pearce on early history of Alberta, 100th birthday celebration papers, 1933, and notes, essays and other writings, n.d.; miscellaneous papers of George Hunter re the Banff Rotary Club and of Leanore Hunter re the Banff Boating Club. Includes a photograph of Tom Wilson and Chief George Hunter at Lake Louise, by W. D. Wilcox, 1929. Also includes tintype portraits, possibly of Sibbald family, ca.1870.

Name Access: Hunter, George  
Sibbald, Andrew S.

Subject Access:	Family and personal life First Nations Indigenous Peoples
Access Restrictions:	Some restrictions on access to originals Public domain (other restrictions may apply)
Language:	Language is English
Finding Aid:	Finding aids and reference tools: modern reference prints for tintypes and fragile prints
Creator:	Sibbald-Hunter (families)
Category:	Family and personal life First nations
Title Source:	Title based on accession records
Processing Status:	Processed

This material is presented as originally created; it may contain outdated cultural descriptions and potentially offensive content. [Read more.](#)



## Peter and Catharine Whyte fonds

<https://archives.whyte.org/en/permalink/descriptions36>

Part Of:	Peter and Catharine Whyte fonds
Description Level:	1 / Fonds
Fonds Number:	M36 / V683 / S37
Sous-Fonds:	TBD
Accession Number:	3069 and various
Reference Code:	M36 / S37 / V683



GMD:	Drawing
	Motion picture
	Film
	Photograph
	Album
	Ambrotype
	Cased photograph
	Daguerreotype
	Negative
	Photograph print
	Postcard
	Tintype
	Transparency
	Sound recording
	Cassette
	Reel to reel
	Textual record
	Plan
	Poster
	Private record
	Published record
Other Title Info:	Also known as the Whyte family fonds
Date Range:	1856-1980
Physical Description:	25 m of textual records. -- ca.46,000 photographs : prints, albums, postcards, cased photographs, transparencies, negatives. -- 178 sound recordings : audio tape reels, audio tape cassettes. -- 6 motion pictures (and film strips)

## History /

### Biographical:

Peter and Catharine Whyte were artists, photographers, outdoor enthusiasts, travelers, philanthropists and cultural workers at Banff, Alberta, Canada. Peter Whyte, 1905-1966, was born at Banff in 1905 to pioneer merchant Dave White and Annie (Curren) White. He was an accomplished skier and ski jumper and one of the region's first native-born painters with an intimate knowledge of the mountains and was an active photographer from ca.1920 until the 1950s. Peter Whyte studied art at the Otis Art Institute, Los Angeles, 1923-1924, and at the School of the Museum of Fine Arts at Boston, 1925, where he met Catharine Robb. Catharine Robb Whyte, 1906-1979, was born in 1906 at Concord, Massachusetts and grew up amongst the wealth and creativity of the Robb and Morse families. She studied at the School of the Museum of Fine Arts at Boston, 1925-1929.

Following their marriage in 1930, the Whytes pursued a life of painting, photography, hiking, skiing and travelling. Their log home and studio in Banff became a focal point for their artist friends, Stoney Indians and local pioneers. Catharine shared Pete's involvement in skiing and hiking organizations and together they managed Skoki Lodge from 1932-1934. In following years, the Whytes travelled extensively. During the Second World War, Peter served in the reserve army, with the Royal Canadian Air Force as a photographer and, briefly, as an official war artist. Catharine continued to paint and maintain their home and, when possible, accompanied Pete to his military postings. In civilian life, Pete resumed his art career, explored new photographic techniques and sculpted.

Throughout the 1950s and 1960s, the Whytes formulated plans for a foundation to preserve the art and history of the Canadian Rockies. Plans for a building to house an archives, public library and gallery were in preparation when Pete died in 1966. The Peter Whyte Foundation was named in his honour. Catharine immersed herself in the development of what is now the Whyte Museum of the Canadian Rockies, in the cultural community, painting, outdoor activity, travel and work with the Stoney First Nations. She became a more active photographer, recording her travels and outdoor pursuits. She served in an official capacity with numerous cultural and charitable organizations, was a patron to individuals studying art and music, and supported numerous causes relating to the Stoney First Nations. Catharine also supported causes related to multiculturalism, regional culture and recreation, and cancer research. Despite her modesty and often anonymous patronage of causes, Catharine was recognized with numerous awards and honours, including the Order of Canada in 1978. She died in Banff in 1979.

### Scope & Content:

Fonds consists of papers, photographs and sound recordings of Peter and Catharine Whyte and the papers and photographs of their respective families. Consists of three sous-fonds: V683, S37 and M36. M36 and S37 consists of three series. Series I: Peter and Catharine Whyte, Series II: Robb and Morse families, Series III: White and Curren families. Within Series I, there are four Sub-series: Series: A. Catharine Robb Whyte papers; B. Peter Whyte papers; C. Peter and Catharine Whyte papers accessioned after 2017; D. Peter and Catharine Whyte sound recordings.

Name Access:	Whyte, Peter
	Whyte, Catharine
Subject Access:	Arts
	Communications
	Environment
	Exploration, discovery and travel
	Family and personal life
	First nations
	Sports, recreation and leisure

Access Restrictions:	Some restriction/s on access Copyright, privacy, commercial use and other restrictions may apply
Language:	Language is English
Finding Aid:	Finding aids and reference tools: arrangement outline sous-fonds, series and file description for textual sub-series and group description for photographs item description, subject/proper name index, and summaries for sound recordings reference copies for sound recordings
Creator:	Whyte, Peter Whyte, Catharine
Category:	Arts Communications Environment Exploration, discovery and travel Family and personal life First nations Sports, recreation and leisure
Title Source:	Title based on contents of fonds
Processing Status:	Processed

## Electronic Resources



m36\_s37\_finding\_aid.pdf

 Read PDF

 Download PDF

This material is presented as originally created; it may contain outdated cultural descriptions and potentially offensive content. [Read more.](#)



## Tom Wilson family fonds

<https://archives.whyte.org/en/permalink/descriptions38>

Part Of: Tom Wilson family fonds  
Description Level: 1 / Fonds

Fonds Number: M 10  
 V 701  
 Sous-Fonds: M 10  
 V 701  
 Accession Number: 551, 981, 1234, 1578, 1634, 2097, 3039, 7750 (unproc)  
 Reference Code: M10 / V701  
 GMD: Photograph  
 Negative  
 Photograph print  
 Textual record  
 Diary  
 Private record  
 Published record  
 Scrapbook  
 Date Range: 1861-1982  
 Physical Description: 2 v. and 2 cm of textual records. -- ca.400 photographs : prints, copy negatives. -- 1 cm of print material

History /  
Biographical:

The Wilson family were guides, outfitters and ranchers at Morley, Kootenay Plains, Banff and Nordegg, Alberta, Canada. Thomas Edmonds (Tom) Wilson, 1859- 1933, and Minnie McDougall Wilson, 1865-1936, had six children, including sons John Clark Wilson, 1888-1932, and Thomas Edmonds (Ed) Wilson, 1892-1973. Daughters were Ada, 1886-1967?, Rene, Bessie and Dora. Tom Wilson is credited with the discovery of Lake Louise in July of 1882, while working as a packer on the Canadian Pacific Railway survey through the mountains. In 1883, Wilson established his own business at Banff, Lake Louise and Field, British Columbia. After selling the business in 1904, Tom Wilson operated a horse ranch at Kootenay Plains. He later retired to Banff. Ed Wilson was born at Morley and raised in Banff. Around 1910 he began working for Brewster Trading Company at Banff and, later, Lake Louise. Just before the First World War, he moved to Nordegg, where he worked for the Bighorn Trading Company for many years.

#### Scope & Content:

Fonds includes textual records and photographs generated and collected by the Wilson family and pertaining to Tom Wilson, son Ed Wilson, daughter Ada Wilson and other family members.

Textual records include: Ed Wilson's scrapbook, 1881-1968, which includes mainly items pertaining to Tom Wilson, Ed Wilson, the Wilson family, and early guiding and exploration in the Canadian Rockies (photocopy in two volumes); miscellaneous papers, 1905-1929, including a holograph speech by D. D. Galletly on the cave at Banff; letter and note re sale of horses to Frank Wellman, 1920; letters to Catharine Whyte from Ada Wilson re personal matters and Wilson family history, 1964-1965; transcripts of manuscripts by Tom Wilson and B. M. (Bess) Wilson re the CPR and tourism and 1916 pack trip Lake Louise to Kootenay Plains; letters of Col. Robert O'Hara to Tom Wilson, 1895- 1914, re Mount Assiniboine and Lake O'Hara; letter by Catharine Robb Whyte to Tom Link, 1965, re Lake O'Hara history based partly upon above material; diary, Trip to ranch by B. M. Wilson; essay, The last of the pathfinders by Dorie (Wilson) Legit; programmes, articles, clippings re Tom Wilson, 1924-1982; Eliza Edmonds certificate, 1845, and later clipping.

Photographs pertain to outfitting and guiding activities of Tom, John and Ed Wilson, including clients, associates and trips throughout the Rocky Mountains; Wilson family, friends and associates; Stoney Indians; Kootenay Plains; Banff people and events; Banff townsite and surrounding area; Canadian Pacific Railway; Nordegg area; 1861-1930. Includes photograph of Tom Wilson at Lake Louise inscribed to A. O. Wheeler, 1932. Many of the early photographs were taken by clients of Tom Wilson. Later, after settling at Kootenay Plains, Wilson was apparently given a camera by Mary Vaux and likely took many of the Stoney Indians views. Ed Wilson was an amateur photographer and likely took most of the views of staff at Lake Louise and of Nordegg.

Name Access:	Wilson, Ada Wilson, Ed Wilson, Tom
Subject Access:	Exploration, discovery and travel Family and personal life First nations Sports, recreation and leisure
Access Restrictions:	No restrictions on access Copyright, privacy, commercial use and other restrictions may apply
Language:	Language is English
Finding Aid:	Finding aids and reference tools: basic description modern reference prints
Creator:	Wilson, Ed Wilson, Tom
Category:	Exploration, discovery and travel Family and personal life First nations Sports, recreation and leisure
Title Source:	Title based on contents of fonds
Processing Status:	Processed / Unprocessed

This material is presented as originally created; it may contain outdated cultural descriptions and potentially offensive content. [Read more.](#)



## Stuart Armour fonds

<https://archives.whyte.org/en/permalink/descriptions48>

Part Of:	Stuart Armour fonds
Description Level:	1 / Fonds
Fonds Number:	M 406 V 698
Sous-Fonds:	M 406 V 698
Accession Number:	2975, 6452
Reference Code:	M406 / V698
GMD:	Photograph Photograph print Textual record Private record
Date Range:	[ca.1883]-1978, predominant 1973-1978
Physical Description:	1 cm of textual material. -- 3 photographs : prints
History / Biographical:	<p>Stuart Armour, b.1893, was a frequent summer visitor to the Banff area with his aunt and uncle, Hayter and Kate Reed, and cousin, Gordon. Over the years, he made numerous pack trips with Pat Brewster. Armour worked as a journalist and economic advisor in Hamilton, Ontario.</p>
Scope & Content:	<p>Fonds consists of selected reminiscences of Stuart Armour, particularly regarding Kate and Hayter Reed, Gordon Reed, friends Pat Brewster and Hamilton Jukes and various pack trips; letters to Pat Brewster; and photographs of Banff's first hotel, ca.1883, and Stuart Armour and Brewster boy in camp and packing a horse, ca.1920.</p>
Name Access:	Armour, Stuart Brewster, Pat Jukes, Hamilton Reed, Gordon Reed, Kate Reed, Hayter
Subject Access:	Pack trips Sports, recreation and leisure
Access Restrictions:	No restrictions on access Copyright, privacy, commercial use and other restrictions may apply
Language:	Language is English
Creator:	Armour, Stuart
Category:	Sports, recreation and leisure
Title Source:	Title based on accession records
Processing Status:	Processed

This material is presented as originally created; it may contain outdated cultural descriptions and



## Astley family fonds

<https://archives.whyte.org/en/permalink/descriptions52>

Part Of: Astley family fonds

Description Level: 1 / Fonds

Fonds Number: M 265  
V 394

Sous-Fonds: M 265  
V 394

Accession Number: 1420, 1520, 2961, 6353, 6756, 7939

Reference Code: M265 / V394

GMD: Photograph  
Photograph print  
Textual record  
Private record

Date Range: [ca.1886]-1970

Physical Description: 13 textual records. -- ca.40 photographs: prints

### History /

### Biographical:

Willoughby John Astley, 1859-1948, came to Banff in 1888 and built the Beach House Hotel at Lake Minnewanka. He moved to Lake Louise in 1889. Brother, Charles D'Oyley Astley, 1849-1937, and Lucy Ann Astley continued to operate the hotel until 1907 when they retired to Banff. The hotel was destroyed as part of power development at Lake Minnewanka, ca.1912.

### Scope & Content:

Fonds consists of notes, correspondence and articles pertaining to the Astley family and early history of Lake Louise and Lake Minnewanka areas. Fonds includes correspondence between Willoughby Astley and J. A. Jaffary of the Provincial Library, Alberta, 1928-1929, re place names in the Lake Louise area; scrapbook of clippings re World War I, including a list of Banff men who enlisted; Beach House Hotel guest register, 1890-1906, recording name and residence of guest, and occasionally record of fish caught; Astley family photographs, ca.1886-1930s. Photographs pertain to fishing and boating on Lake Minnewanka; Beach House Hotel and Lady of the Lake steam launch; Devil's Canyon, Bankhead and Banff; views of avalanche clearing in Roger's Pass by Byron Harmon. Includes one panorama view of group at Lake Minnewanka.

Name Access: Astley, Charles D'Oyley  
Astley, Willoughby John

Subject Access: Buildings and facilities  
Environment  
Family and personal life  
Military  
Sports, recreation and leisure

Access Restrictions: Some restriction/s on access  
Copyright, privacy, commercial use and other restrictions may apply

Language: Language is English



Finding Aid: Finding aids and reference tools: reference copy of hotel register

Related Material: Hotel register is related to similar item in Rodney Touche fonds (M377)

Creator: Astley, Charles D'Oyley  
Astley, Willoughby John

Category: Environment  
Family and personal life  
Military  
Sports, recreation and leisure

Title Source: Title based on accession records and contents of fonds

Processing Status: Processed

This material is presented as originally created; it may contain outdated cultural descriptions and potentially offensive content. [Read more.](#)



## Mabel Aubin fonds

<https://archives.whyte.org/en/permalink/descriptions54>

Part Of: Mabel Aubin fonds

Description Level: 1 / Fonds

Fonds Number: M 166  
V 34

Sous-Fonds: M 166  
V 34

Accession Number: 550, 1002, 1101, 2029, 3541, 3833, 5173

Reference Code: M166 / V34

GMD: Photograph  
Photograph print  
Textual record  
Private record  
Published record

Date Range: [ca.1888]-1980

Physical Description: 4 cm of textual records. -- 32 photographs : prints

History /  
Biographical:

Mabel Sarah Aubin, 1905-1990, was a life-long resident of Banff, Alberta, Canada. Mabel Aubin's parents, the Stenton family, ran the Alberta Hotel beginning ca.1908.

### Scope & Content:

Fonds consists of ration books; ephemera pertaining to Banff musical and variety productions; Christmas cards from the Beil family, the de Grandmaison family, Peter and Catharine Whyte and the Christofferson family; Alberta Hotel menu, 1913; and photographs pertaining to the Stenton family, ca.1888-ca.1950, and 1918 Banff Peace Day parade (First World War), which shows citizens wearing masks in response to the influenza pandemic of 1918-1919

Name Access: Aubin, Mabel

Subject Access: Family and personal life

Access Restrictions: No restrictions on access  
Copyright, privacy, commercial use and other restrictions may apply

Language: Language is English

Finding Aid: Finding aids and reference tools: basic description

Creator: Aubin, Mabel

Category: Family and personal life

Title Source: Title based on accession records

Processing Status: Processed

## Images



OrderRemove



OrderRemove



OrderRemove



OrderRemove

This material is presented as originally created; it may contain outdated cultural descriptions and potentially offensive content. [Read more.](#)



## Ron Duke collection

<https://archives.whyte.org/en/permalink/descriptions67>

Part Of:	Ron Duke collection
Description Level:	1 / Fonds
Fonds Number:	M 16 V 203
Sous-Fonds:	M 16 V 203
Accession Number:	168, 1572, 1593, 1644, 2626, 3379
Reference Code:	M16 / V203
GMD:	Photograph Negative Photograph print Poster Textual record Private record
Date Range:	[ca.1870-ca.1970]
Physical Description:	1 textual record. -- 12 photographs : prints, posters, negatives
History / Biographical:	

Ron Duke was a professional photographer at Banff, Alberta, Canada

### Scope & Content:

Collection includes: certificate of general resolution of appreciation commending Jack Curren, Frank Betteridge, Frank Gombert, F. Wells, Reno Fitten, William Child and Ralph Rink for aid in the rescue of Mrs. W. E. Stone, July 24, 1921, and recovery of the body of Dr. W. E. Stone, d. July 17, 1921, on Mount Eon; and various photographs collected by Duke from unknown sources. Included is a Dave White & Sons Ltd. poster of eight prints, showing store 1894 to 1948; also a poster of male descendants of John Brewster, ca.1965, with ten images.

Name Access:	Duke, Ron (collector)
Subject Access:	Exploration, discovery and travel
Access Restrictions:	No restrictions on access Copyright, privacy, commercial use and other restrictions may apply
Language:	Language is English
Creator:	Duke, Ron (collector)
Category:	Exploration, discovery and travel
Title Source:	Title based on accession records and contents of collection
Processing Status:	Processed

This material is presented as originally created; it may contain outdated cultural descriptions and potentially offensive content. [Read more.](#)

## Boorne and May fonds

<https://archives.whyte.org/en/permalink/descriptions100>



Part Of: Boorne and May fonds  
Description Level: 1 / Fonds  
Fonds Number: V 10  
Sous-Fonds: V10  
Accession Number: 494, 658, 1449, 3227, 6169, 6173, 6208, 6603, 7508  
Reference Code: V10  
GMD: Photograph  
Album  
Photograph print  
Date Range: [ca.1887-1888]  
Physical Description: 1 photograph album (100 prints). -- 40 photographs : prints  
History /  
Biographical:

The photographic firm of Boorne and May, a portrait, landscape and architectural business, operated in Calgary and Edmonton, N.W.T. (now Alberta) between 1886 and 1893. William Hanson Boorne, 1859-1945, and his cousin, Ernest Gundry May, opened their Calgary studio in 1886, later expanding the business to Edmonton. During its short life, Boorne and May was one of the most prestigious photographic firms in western Canada.

Scope & Content:

Fonds consist of two separate series: A. Prints; B. Photograph Albums. Fonds consists primarily of presentation album titled "Landscapes," containing one hundred views along the Canadian Pacific Railway in the Rocky and Selkirk Mountains. The album contains many popular views of the period and is inscribed to "W. Whyte Esq., General Superintendent, Western Division C.P.R., Winnipeg. With Boorne & May's Compliments. Calgary. January 1889." Also includes individual prints of similar views to those in the album and include views as far west as Yale, B.C.

Twenty-two prints, attributable to Boorne and May through photographer numbers and titles on the fronts, are stamped "From J. Nicholson, Photo Artist, Boissevain, Man." on the reverse. Nicholson was a professional photographer at Boissevain, Manitoba between 1888 and 1893. His business was sold to Jas. E. Miers in 1893.

Name Access: Boorne and May  
Subject Access: Arts  
Environment  
Exploration, discovery and travel  
Access Restrictions: Some restrictions on access to originals  
Public domain (other restrictions may apply)  
Language: Language is English  
Finding Aid: Finding aids and reference tools: basic description  
selected modern reference prints  
digital images in Images database and in Alberta InSight database  
Creator: Boorne and May  
Category: Arts  
Environment  
Exploration, discovery and travel  
Title Source: Title based on contents of fonds  
Processing Status: Processed



## Jim and Dorothy Boyce fonds

<https://archives.whyte.org/en/permalink/descriptions104>

Part Of:	Jim and Dorothy Boyce fonds
Description Level:	1 / Fonds
Fonds Number:	M250 / V79
Sous-Fonds:	M 250 V 79
Accession Number:	1418, 1570, 1574, 2453, 3037, 3087, 3609 (unproc), 5575 (unproc), 5856 (unproc), 6359 (unproc), 6762 (unproc), 6790 (unproc), 7047 (unproc), 7363 (unproc)
Reference Code:	M250 / V79
GMD:	Motion picture Film Photograph Album Negative Photograph print Textual record Corporate record Private record Published record
Date Range:	[ca.1850-2001]
Physical Description:	ca.6.5 m textual records. -- ca.3500 photographs: prints, negatives, copy negatives. -- 4 photograph albums. -- 5 motion pictures: film reels; 8mm, 16mm; col.

## History /

### Biographical:

James (Jim) Hawkins Boyce, 1892-1982, was a guide, outfitter, log builder and businessman at Lake Louise and Banff, Alberta, Canada. Dorothy Boyce was a pharmacist and business woman at Calgary, Quebec and Banff, Canada.

Jim Boyce was the son of Joseph Boyce, 1856-1927, and stepson of Wilma "Josephine" Boyce, 1866-1952, of Banff, Alberta. In 1911, Jim joined his father building trails. His guiding and outfitting career began with Jimmy Simpson's outfit as a trail cook. During the 1920s Boyce formed his own outfit with Max Brooks and went on to guide prominent clients Carl Rungius, Caroline Hinman and her parties, George and Adeline Link and William D. Cox of Chicago, USA.

In addition to guiding and outfitting, Jim Boyce worked with motion picture companies on location in the Rockies with his dog teams during the 1920s. A number of well-known log buildings are testament to his log-building skills, including Skoki, Mount Temple Lodge and the Lake Louise Ski Lodge. During the 1930s, Boyce managed and expanded Skoki Lodge. He also supervised road construction on the Banff-Jasper Highway and the Alaska Alcan Military Highway for the U. S. Army during the Second World War and operated the Bar C Ranch (for William D. Cox) for many years. Boyce made his home in Banff.

Dorothy Frances Llewellyn (Whiteman) Boyce, 1901-2001, was the daughter of Rev Arthur Wellesley Richard Whiteman, 1865-1926, and Nina L. Whiteman, 1873-1956. After studying pharmacy at the University of Alberta, Dorothy came to Banff in 1922 to work for Dr. Brett. She subsequently studied at the University of Toronto, Ontario; worked at the Calgary General Hospital, Alberta, from 1926 to 1940; and during the Second World War, worked as a chemist in Quebec, Canada. After the death of her first husband, Tronson James Draper, 1879-1949, an oilman of Calgary, Alberta, Dorothy became a permanent resident of Banff. She owned and operated Travellers Digest in Banff and married Jim Boyce in 1957.

### Scope & Content:

Fonds consists of material pertaining to the separate careers and families of Jim and Dorothy Boyce, as well as material from their life together.

Jim Boyce material consists mainly of business and personal papers and photographs, ca.1910-1982. Business papers arise mainly from the incorporation, operation and expropriation of the Lake Louise Ski Lodge (later Post Hotel) 1941-1969. Other business and personal material pertains to Skoki Lodge, 1933-1942; guiding and outfitting, 1938-1940; Army Service Forces and Alaska Alcan Military Highway, 1943-1944; Bar C Ranch, 1947-1969; laundry and rental businesses, 1962-1965, plans for Boyce house, Banff and family items. Correspondents include William D. Cox and Eldon Woolliams. Jim Boyce photographs pertain to family, friends, associates and activities, Banff and Skoki areas; includes guiding and outfitting, hunting, motion picture and dog team activities, Skoki Lodge and region, Alaska-Yukon activities, Bar C Ranch and personal material.

Papers of Dorothy Boyce, 1901-ca.1950, pertain to her childhood, university career, business life and first marriage; Dorothy Boyce photographs, ca.1920s-1940, pertain to family, friends, professional and recreational activities in Banff, Banff and Yoho National Parks, Calgary, Edmonton, Vancouver and Toronto.

Jim and Dorothy Boyce joint material includes photographs, 1900s-1990s, and incoming letters pertaining to home, travel and friends. Album includes mainly published postcards from all over the world. Fonds also includes Boyce family personal and financial papers, 1901-1928; business and estate papers of Joseph Boyce, 1908-1954; Tronson Draper and Draper family personal and professional papers and photographs, 1906-1949; and Whiteman family papers and photographs, ca.1860, 1885-ca.1925. Also included in the Boyce's personal records are film reels ca.1920-1970 which pertain mainly to the Skoki area.

Name Access:       Boyce, Jim  
                              Boyce, Dorothy

Subject Access:	Exploration, discovery and travel Family and personal life
Access Restrictions:	Some restriction/s on access Copyright, privacy, commercial use and other restrictions may apply
Language:	English
Finding Aid:	Finding aids and reference tools: preliminary electronic finding aid motion picture summaries
Related Material:	Transparencies by Adeline and/or George Link of trips with Jim Boyce, formerly retained by Jim Boyce, can be found in George K. K. Link fonds (M60/V276) Accompanied by artifacts (Heritage collections, Whyte Museum)
Creator:	Boyce, Jim Boyce, Dorothy
Category:	Exploration, discovery and travel Family and personal life
Title Source:	Title based on accession records and contents of fonds
Processing Status:	Processed / Unprocessed

This material is presented as originally created; it may contain outdated cultural descriptions and potentially offensive content. [Read more.](#)



## Fred Brewster fonds

<https://archives.whyte.org/en/permalink/descriptions107>

Part Of:	Fred Brewster fonds
Description Level:	1 / Fonds
Fonds Number:	M 53 V 86
Sous-Fonds:	M 53 V 86
Accession Number:	318, 1195, 2041, 6196, 6756
Reference Code:	M53 / V86
GMD:	Photograph Photograph print Textual record Journal Map Private record Published record Scrapbook
Date Range:	[ca.1887]-1969
Physical Description:	ca.50 cm of textual records. -- 113 photographs : prints



## History /

### Biographical:

Frederick Archibald Brewster, 1883-1969, was an outfitter and guide at Jasper, Alberta, Canada. Brewster was born in Kildonan, Manitoba and in 1888 moved with his family to Banff, where he received his education. He subsequently attended St. John's College, Winnipeg, Manitoba and Queen's University, Kingston, Ontario, obtaining a B.Sc. in Mining Engineering. Brewster worked briefly as a prospector and in 1910 embarked upon a long career as an outfitter and guide, first with Brewster and Moore. He established operations in Jasper in 1912 and was responsible for important parties, including those of Samuel Prescott Fay and the United States Biological Survey. Brewster served with distinction in the First World War and was involved with mountain warfare training of the Lovat Scouts in the Second World War. He supplemented his outfitting business with a series of camps which doubled as ski lodges: Fred Brewster's Rocky Mountain Camps, and boat concessions.

### Scope & Content:

Fonds consists of: I. Personal papers, 1897-1967, pertaining to family, education, military service, etc. II. Professional and business papers, 1908-1957, re Consolidated Mining and Smelting Co. of Canada, private mining ventures, Brewster and Moore outfitting, Brewster Transfer Co., and Brewster Trading Co., Samuel Prescott Fay, Lovat Scouts, Jasper, etc. Includes scrapbook titled "Mt. Sir Alexander," 1912-1967, attributed to Fred Brewster, consisting of clippings, articles and maps re the discovery, naming, ascents, etc. of Mount Sir Alexander, also text of speech delivered by Brewster at the opening of the Banff-Jasper Highway. Also includes Samuel Prescott Fay journal from 1914 hunting trip, photocopy. III. Newsclippings and magazines, 1930-1969. IV. Book, "Lord of the Lakes and Forest" by Augustus Moore. V. Photographs, ca.1887-ca.1967, pertaining to Fred Brewster outfitting operations, associates, clients, camps, lodges and facilities; Brewster family and friends; Fred Brewster college and university associates.

Name Access:	Brewster, Fred
Subject Access:	Family and personal life Natural resources Sports, recreation and leisure
Access Restrictions:	No restrictions on access Copyright, privacy, commercial use and other restrictions may apply
Language:	Language is English
Finding Aid:	Finding aids and reference tools: basic description
Related Material:	Accompanied by artifacts (Heritage collections).
Creator:	Brewster, Fred
Category:	Family and personal life Natural resources Sports, recreation and leisure
Title Source:	Title based on contents of fonds
Processing Status:	Processed

This material is presented as originally created; it may contain outdated cultural descriptions and potentially offensive content. [Read more.](#)