

Research Collections



Vase

<https://archives.whyte.org/en/permalink/artifact102.04.0083>

Title: Vase
Date: 1900 – 1940
Material: metal, copper
Dimensions: 8.0 x 8.3 x 11.2 cm
Description: An urn-shaped copper plated jug or vase with two handles.
Subject: households
decorative
Credit: Gift of Pearl Evelyn Moore, Banff, 1979
Catalogue Number: 102.04.0083

Images



This material is presented as originally created; it may contain outdated cultural descriptions and potentially offensive content. [Read more.](#)



Vase

<https://archives.whyte.org/en/permalink/artifact102.04.0090%20a%2cb>

Title:	Vase
Date:	1900 – 1940
Material:	metal, silver; glass
Dimensions:	13.0 cm
Description:	Two pressed glass posy vases. Both have flared, scallop edged, silver rims that are tarnished.
Subject:	households decorative
Credit:	Gift of Pearl Evelyn Moore, Banff, 1979
Catalogue Number:	102.04.0090 a,b

Images



This material is presented as originally created; it may contain outdated cultural descriptions and potentially offensive content. [Read more.](#)



Vase

<https://archives.whyte.org/en/permalink/artifact102.04.0091>

Title:	Vase
Date:	1900 – 1940
Material:	glass
Dimensions:	12.0 x 4.8 x 4.8 cm
Description:	A cut crystal posy vase with a diamond design.
Subject:	households decorative
Credit:	Gift of Pearl Evelyn Moore, Banff, 1979
Catalogue Number:	102.04.0091

Images



This material is presented as originally created; it may contain outdated cultural descriptions and potentially offensive content. [Read more.](#)



Vase

<https://archives.whyte.org/en/permalink/artifact102.04.0096>

Title:	Vase
Date:	1900 – 1940
Material:	glass
Dimensions:	25.0 x 15.0 x 15.0 cm
Description:	A vase with a circular body that is decorated with a cut star design. The neck of the vase is pinched and flares slightly out at the top.
Subject:	households decorative
Credit:	Gift of Pearl Evelyn Moore, Banff, 1979
Catalogue Number:	102.04.0096

Images



This material is presented as originally created; it may contain outdated cultural descriptions and potentially offensive content. [Read more.](#)



Vase

<https://archives.whyte.org/en/permalink/artifact102.04.0097>

Title:	Vase
Date:	1900 – 1940
Material:	glass; paint
Dimensions:	33.5 x 10.1 x 10.1 cm
Description:	A vase with a fluted base and a narrow bottom that flares gradually to the rim. This vase features an ornate cut design that is decorated with a formal leaf design in gold. The top edge is finished with a band of plain gold.
Subject:	households decorative
Credit:	Gift of Pearl Evelyn Moore, Banff, 1979
Catalogue Number:	102.04.0097

Images



This material is presented as originally created; it may contain outdated cultural descriptions and potentially offensive content. [Read more.](#)



Vase

<https://archives.whyte.org/en/permalink/artifact102.04.0121>

Title:	Vase
Date:	1900 – 1940
Material:	stone, marble
Dimensions:	12.0 cm
Description:	A pink marble vase with a pinched base, egg-shaped body, and a neck that flares out to the lip.
Subject:	households decorative
Credit:	Gift of Pearl Evelyn Moore, Banff, 1979
Catalogue Number:	102.04.0121

Images



This material is presented as originally created; it may contain outdated cultural descriptions and potentially offensive content. [Read more.](#)



Vase

<https://archives.whyte.org/en/permalink/artifact102.04.0230>

Title:	Vase
Date:	1870 – 1935
Material:	ceramic
Dimensions:	6.3 x 6.0 cm
Description:	Transparent glaze and cobalt decoration. Landscape with tree decoration, trimmed foot. Flared rim at open mouth above straight sides with no neck.
Subject:	households decorative miniatures E. S. Morse
Credit:	Gift of Catharine Robb Whyte, O. C., Banff, 1979
Catalogue Number:	102.04.0230

Images



This material is presented as originally created; it may contain outdated cultural descriptions and potentially offensive content. [Read more.](#)



Vase

<https://archives.whyte.org/en/permalink/artifact102.04.0231>

Title:	Vase
Date:	1870 – 1935
Material:	ceramic, porcelain
Dimensions:	5.4 x 5.1 cm
Description:	Slab-footed, hand formed body to resemble bell-flower shape. Transparent glaze with cobalt speckling inside and outside of rim. Tooled bract-shaped forms near base; signature stamp on bottom.
Subject:	households decorative miniatures E. S. Morse
Credit:	Gift of Catharine Robb Whyte, O. C., Banff, 1979
Catalogue Number:	102.04.0231

Images



This material is presented as originally created; it may contain outdated cultural descriptions and potentially offensive content. [Read more.](#)



Vase

<https://archives.whyte.org/en/permalink/artifact102.04.0237>

Title:	Vase
Date:	1870 – 1935
Material:	ceramic
Dimensions:	10.5 x 7.6 cm
Description:	Bamboo stalk shaped vase. Very pale transparent green glaze - heavily cracked slab-built then seam formed and carved to resemble bamboo stalk. Base has concave indentation, cylindrical shape on a flat, circular base.
Subject:	households decorative E. S. Morse
Credit:	Gift of Catharine Robb Whyte, O. C., Banff, 1979
Catalogue Number:	102.04.0237

Images



This material is presented as originally created; it may contain outdated cultural descriptions and potentially offensive content. [Read more.](#)



Vase

<https://archives.whyte.org/en/permalink/artifact102.04.0238>

Title:	Vase
Date:	1870 – 1935
Material:	ceramic
Dimensions:	8.5 x 8.7 cm
Description:	<p>Small spheroid vase with cylindrical neck, beige glaze with black, red, gold, green enamel over-glazes in flower pattern. Flat and trimmed foot. Neck has 2.2 cm. diameter, two sections of punch pattern which possibly created depression which runs the circumference. Signature stamp near base.</p>
Subject:	<p>households</p> <p>decorative</p> <p>miniatures</p> <p>E. S. Morse</p>
Credit:	Gift of Catharine Robb Whyte, O. C., Banff, 1979
Catalogue Number:	102.04.0238

Images



This material is presented as originally created; it may contain outdated cultural descriptions and potentially offensive content. [Read more.](#)



Vase

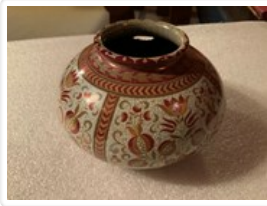
<https://archives.whyte.org/en/permalink/artifact102.04.0239>

Title:	Vase
Date:	1870 – 1935
Material:	ceramic
Dimensions:	15.1 x 9.0 cm
Description:	Near cylindrical vase with three L-shaped feet, transparent glaze with cobalt decoration of three crane-like birds, was hand thrown and base trimmed flat. Three feet slab built and attached separately to sides and extending out from base at right angles.
Subject:	households decorative E. S. Morse
Credit:	Gift of Catharine Robb Whyte, O. C., Banff, 1979
Catalogue Number:	102.04.0239

Images



This material is presented as originally created; it may contain outdated cultural descriptions and potentially offensive content. [Read more.](#)



Vase

<https://archives.whyte.org/en/permalink/artifact102.04.0243>

Title:	Vase
Date:	1900 – 1950
Material:	ceramic
Dimensions:	7.8 cm
Description:	Hand thrown using a soft clay and low temperature firing. Squat spheroid shape with belled 5.2 diameter neck. Appears to have been covered first with white slip then iridescent olive, burgundy and mustard coloured glazes. Ornate floral design with chevron-design borders. "Zsolnay Pecs. Millenium" printed on bottom as well as "353" and Zsolnay Pecs" stamped on bottom. 2.5 x 1.8 cm, hole chipped and missing from side of bowl.
Subject:	households decorative
Credit:	Gift of Catharine Robb Whyte, O. C., Banff, 1979
Catalogue Number:	102.04.0243

Images



This material is presented as originally created; it may contain outdated cultural descriptions and potentially offensive content. [Read more.](#)



Vase

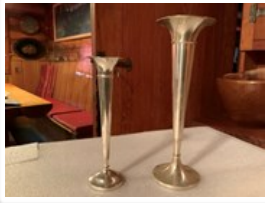
<https://archives.whyte.org/en/permalink/artifact102.04.0245>

Title:	Vase
Date:	1870 – 1935
Material:	ceramic
Dimensions:	10.9 x 4.4 cm
Description:	Narrow, four-sided deep turquoise (from copper content glaze) vase, glaze crazed. Floral and bird panel designs. Press-moulded body and separately attached, four corner bracket feet.
Subject:	households decorative E. S. Morse
Credit:	Gift of Catharine Robb Whyte, O. C., Banff, 1979
Catalogue Number:	102.04.0245

Images



This material is presented as originally created; it may contain outdated cultural descriptions and potentially offensive content. [Read more.](#)



Vase

<https://archives.whyte.org/en/permalink/artifact102.04.0287%20a%2cb>

Title:	Vase
Date:	1900 – 1930
Material:	metal
Dimensions:	25.5 x 8.9 cm
Description:	One large (A) and one small (B) tall, slender vase. Both very similar in exterior appearance with circular, weighted bases, extending from which is a narrow, ridged stem which then flares out into a belled rim which is slightly wave-like in contour. (A) has scratched "Og.ex/aH,NX" on base as well as stamped three hallmarks: circle containing crown, crest containing "W" and another circle or crescent containing animal figure. Also stamped "Sterling 5079 3 oz. weighted". Vase (B) has circular ridges on base and hallmark resembling "T" superimposed on "A" followed by "Sterling 351 weighted" and scratched "5-6-117-W-E".
Subject:	households decorative
Credit:	Gift of Catharine Robb Whyte, O. C., Banff, 1979
Catalogue Number:	102.04.0287 a,b

Images



This material is presented as originally created; it may contain outdated cultural descriptions and potentially offensive content. [Read more.](#)