



Bowl

<https://archives.whyte.org/en/permalink/artifact104.20.0121>

Title:	Bowl
Date:	1870 – 1890
Material:	ceramic, bone china
Dimensions:	7.5 cm
Description:	A simple round bowl resting on a round base that is larger than the bottom of the bowl. The bowl is decorated with a plain gold band around the outside of the rim and a gold line on the base. The bowl is marked “H & Co. L France” which stands for Haviland & Co. Limoges. There is a white sticker with “59” written on it affixed to the interior.
Subject:	households
	Pat Brewster
Credit:	Gift of Pearl Evelyn Moore, Banff, 1979
Catalogue Number:	104.20.0121

Images



This material is presented as originally created; it may contain outdated cultural descriptions and potentially offensive content. [Read more.](#)



Bowl

<https://archives.whyte.org/en/permalink/artifact104.20.0302>

Title:	Bowl
Date:	1870 – 1890
Material:	ceramic
Dimensions:	4.0 x 9.4 cm
Description:	Very coarse stoneware bowl with transparent glaze and white decorative slip, some crazing, roughly trimmed foot, near base has been trimmed.
Subject:	households Edith Morse Robb Edward S. Morse
Credit:	Gift of Catharine Robb Whyte, O. C., Banff, 1979
Catalogue Number:	104.20.0302

Images



This material is presented as originally created; it may contain outdated cultural descriptions and potentially offensive content. [Read more.](#)



Bowl

<https://archives.whyte.org/en/permalink/artifact104.20.0303>

Title:	Bowl
Date:	1870 – 1890
Material:	ceramic
Dimensions:	3.9 x 7.5 cm
Description:	Very coarse stoneware bowl with transparent glaze and white decorative slip. White interior and white brown cranes, clouds on exterior, roughly trimmed foot.
Subject:	households Edith Morse Robb Edward S. Morse animal crane
Credit:	Gift of Catharine Robb Whyte, O. C., Banff, 1979
Catalogue Number:	104.20.0303

Images



This material is presented as originally created; it may contain outdated cultural descriptions and potentially offensive content. [Read more.](#)

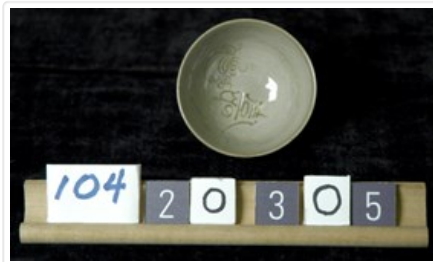


Bowl

<https://archives.whyte.org/en/permalink/artifact104.20.0305>

Title:	Bowl
Date:	1870 – 1890
Material:	ceramic
Dimensions:	3.6 x 6.4 cm
Description:	Fine stoneware bowl, pale green clay which has been incised inside bowl, with a transparent over glaze, calligraphy inside bowl, trimmed foot, oxides can be seen in clay base, crackling of glaze inside and out.
Subject:	households Edith Morse Robb Edward S. Morse
Credit:	Gift of Catharine Robb Whyte, O. C., Banff, 1979
Catalogue Number:	104.20.0305

Images



This material is presented as originally created; it may contain outdated cultural descriptions and potentially offensive content. [Read more.](#)



Bowl

<https://archives.whyte.org/en/permalink/artifact104.20.0309>

Title: Bowl
Date: 1870 – 1890
Material: ceramic
Dimensions: 4.1 x 6.9 cm
Description: Footed bowl with high copper content glaze creating turquoise colour.
Subject: households
Edith Morse Robb
Edward S. Morse
Credit: Gift of Catharine Robb Whyte, O. C., Banff, 1979
Catalogue Number: 104.20.0309

Images



This material is presented as originally created; it may contain outdated cultural descriptions and potentially offensive content. [Read more.](#)



Bowl

<https://archives.whyte.org/en/permalink/artifact104.20.0310>

Title:	Bowl
Date:	1870 – 1890
Material:	ceramic
Dimensions:	4.5 x 8.2 cm
Description:	Elaborately carved foot and sides above base. Iron glaze at base and celadon, gray blue, glaze above with blue and white, 3, birds, chidori figures. Incised at base and stamped ocean waves just above base on side birds and waves.
Subject:	households Edith Morse Robb Edward S. Morse animal bird
Credit:	Gift of Catharine Robb Whyte, O. C., Banff, 1979
Catalogue Number:	104.20.0310

Images



This material is presented as originally created; it may contain outdated cultural descriptions and potentially offensive content. [Read more.](#)



Bowl

<https://archives.whyte.org/en/permalink/artifact104.20.0311>

Title:	Bowl
Date:	1870 – 1890
Material:	ceramic
Dimensions:	3.7 x 5.9 cm
Description:	Trim footed bowl with ivory inside glaze and celadon, gray, exterior glaze and pink green white floral over glaze enamels. Stamped signature on base, Banko.
Subject:	households Edith Morse Robb Edward S. Morse
Credit:	Gift of Catharine Robb Whyte, O. C., Banff, 1979
Catalogue Number:	104.20.0311

Images



This material is presented as originally created; it may contain outdated cultural descriptions and potentially offensive content. [Read more.](#)



Bowl

<https://archives.whyte.org/en/permalink/artifact104.20.0316>

Title:	Bowl
Date:	1870 – 1890
Material:	ceramic
Dimensions:	4.3 x 5.6 cm
Description:	Press molded bowl, glazed inside only, painted outside. Exterior relief appears to be water lily leaf with additional, applied painted house and shrubbery, lotus root forms coiled base. Stamp on exterior near base.
Subject:	households Edith Morse Robb Edward S. Morse
Credit:	Gift of Catharine Robb Whyte, O. C., Banff, 1979
Catalogue Number:	104.20.0316

Images



This material is presented as originally created; it may contain outdated cultural descriptions and potentially offensive content. [Read more.](#)



Vase

<https://archives.whyte.org/en/permalink/artifact102.04.0230>

Title:	Vase
Date:	1870 – 1935
Material:	ceramic
Dimensions:	6.3 x 6.0 cm
Description:	Transparent glaze and cobalt decoration. Landscape with tree decoration, trimmed foot. Flared rim at open mouth above straight sides with no neck.
Subject:	households decorative miniatures E. S. Morse
Credit:	Gift of Catharine Robb Whyte, O. C., Banff, 1979
Catalogue Number:	102.04.0230

Images



This material is presented as originally created; it may contain outdated cultural descriptions and potentially offensive content. [Read more.](#)



Vase

<https://archives.whyte.org/en/permalink/artifact102.04.0231>

Title:	Vase
Date:	1870 – 1935
Material:	ceramic, porcelain
Dimensions:	5.4 x 5.1 cm
Description:	Slab-footed, hand formed body to resemble bell-flower shape. Transparent glaze with cobalt speckling inside and outside of rim. Tooled bract-shaped forms near base; signature stamp on bottom.
Subject:	households decorative miniatures E. S. Morse
Credit:	Gift of Catharine Robb Whyte, O. C., Banff, 1979
Catalogue Number:	102.04.0231

Images



This material is presented as originally created; it may contain outdated cultural descriptions and potentially offensive content. [Read more.](#)



Vase

<https://archives.whyte.org/en/permalink/artifact102.04.0237>

Title:	Vase
Date:	1870 – 1935
Material:	ceramic
Dimensions:	10.5 x 7.6 cm
Description:	Bamboo stalk shaped vase. Very pale transparent green glaze - heavily cracked slab-built then seam formed and carved to resemble bamboo stalk. Base has concave indentation, cylindrical shape on a flat, circular base.
Subject:	households decorative E. S. Morse
Credit:	Gift of Catharine Robb Whyte, O. C., Banff, 1979
Catalogue Number:	102.04.0237

Images



This material is presented as originally created; it may contain outdated cultural descriptions and potentially offensive content. [Read more.](#)



Vase

<https://archives.whyte.org/en/permalink/artifact102.04.0238>

Title:	Vase
Date:	1870 – 1935
Material:	ceramic
Dimensions:	8.5 x 8.7 cm
Description:	<p>Small spheroid vase with cylindrical neck, beige glaze with black, red, gold, green enamel over-glazes in flower pattern. Flat and trimmed foot. Neck has 2.2 cm. diameter, two sections of punch pattern which possibly created depression which runs the circumference. Signature stamp near base.</p>
Subject:	<p>households</p> <p>decorative</p> <p>miniatures</p> <p>E. S. Morse</p>
Credit:	Gift of Catharine Robb Whyte, O. C., Banff, 1979
Catalogue Number:	102.04.0238

Images



This material is presented as originally created; it may contain outdated cultural descriptions and potentially offensive content. [Read more.](#)



Vase

<https://archives.whyte.org/en/permalink/artifact102.04.0239>

Title:	Vase
Date:	1870 – 1935
Material:	ceramic
Dimensions:	15.1 x 9.0 cm
Description:	Near cylindrical vase with three L-shaped feet, transparent glaze with cobalt decoration of three crane-like birds, was hand thrown and base trimmed flat. Three feet slab built and attached separately to sides and extending out from base at right angles.
Subject:	households decorative E. S. Morse
Credit:	Gift of Catharine Robb Whyte, O. C., Banff, 1979
Catalogue Number:	102.04.0239

Images



This material is presented as originally created; it may contain outdated cultural descriptions and potentially offensive content. [Read more.](#)



Vase

<https://archives.whyte.org/en/permalink/artifact102.04.0245>

Title:	Vase
Date:	1870 – 1935
Material:	ceramic
Dimensions:	10.9 x 4.4 cm
Description:	Narrow, four-sided deep turquoise (from copper content glaze) vase, glaze crazed. Floral and bird panel designs. Press-moulded body and separately attached, four corner bracket feet.
Subject:	households decorative E. S. Morse
Credit:	Gift of Catharine Robb Whyte, O. C., Banff, 1979
Catalogue Number:	102.04.0245

Images



This material is presented as originally created; it may contain outdated cultural descriptions and potentially offensive content. [Read more.](#)



Bowl

<https://archives.whyte.org/en/permalink/artifact104.20.0332>

Title:	Bowl
Date:	1870 – 1890
Material:	ceramic
Dimensions:	3.5 x 7.0 cm
Description:	White slip with light cobalt decoration in centre bowl/inside rim/outside, trimmed foot, stamped base. Distinguished by beige staining in bowl and pitting in glaze throughout bowl but especially on exterior.
Subject:	households Edith Morse Robb Edward S. Morse
Credit:	Gift of Catharine Robb Whyte, O. C., Banff, 1979
Catalogue Number:	104.20.0332

Images



This material is presented as originally created; it may contain outdated cultural descriptions and potentially offensive content. [Read more.](#)



Bowl

<https://archives.whyte.org/en/permalink/artifact104.20.0334>

Title:	Bowl
Date:	1870 – 1890
Material:	ceramic
Dimensions:	3.5 x 5.4 cm
Description:	Pale green glaze outside only with orange, blue, green, enamel floral over glazes. Transparent over glaze crazed. Was thrown then shaped with tool.
Subject:	households
	Edith Morse Robb
	Edward S. Morse
Credit:	Gift of Catharine Robb Whyte, O. C., Banff, 1979
Catalogue Number:	104.20.0334

Images



This material is presented as originally created; it may contain outdated cultural descriptions and potentially offensive content. [Read more.](#)



Bowl

<https://archives.whyte.org/en/permalink/artifact104.20.0337>

Title:	Bowl
Date:	1870 – 1890
Material:	ceramic
Dimensions:	4.4 x 7.4 cm
Description:	Light grey glaze with cobalt brush decoration, flowers and abstracts. Crackling caused in cooling. Deeply trimmed foot, calligraphy inside bowl.
Subject:	households Edith Morse Robb Edward S. Morse
Credit:	Gift of Catharine Robb Whyte, O. C., Banff, 1979
Catalogue Number:	104.20.0337

Images



This material is presented as originally created; it may contain outdated cultural descriptions and potentially offensive content. [Read more.](#)



Bowl

<https://archives.whyte.org/en/permalink/artifact104.20.0338>

Title:	Bowl
Date:	1870 – 1890
Material:	ceramic
Dimensions:	4.2 x 7.6 cm
Description:	Small bowl or teacup with a cobalt grey glaze with deeper cobalt brush decoration, abstract designs. The base is beige clay.
Subject:	Whyte home households Edith Morse Robb Edward S. Morse
Credit:	Gift of Catharine Robb Whyte, O. C., Banff, 1979
Catalogue Number:	104.20.0338

Images



This material is presented as originally created; it may contain outdated cultural descriptions and potentially offensive content. [Read more.](#)



Bowl

<https://archives.whyte.org/en/permalink/artifact104.20.0340%20a%2cb>

Title: Bowl

Date: 1870 – 1890

Material: ceramic

Dimensions: 4.2 x 7.0 cm

Description: Trimmed foot, white glaze with green, red, blue, mauve mums. Overglaze enamels and gold lustre, gold rim, floral design mums.

Subject: households

Edith Morse Robb

Edward S. Morse

Credit: Gift of Catharine Robb Whyte, O. C., Banff, 1979

Catalogue Number: 104.20.0340 a,b

Images



This material is presented as originally created; it may contain outdated cultural descriptions and potentially offensive content. [Read more.](#)



Bowl

<https://archives.whyte.org/en/permalink/artifact104.20.0341%20a%2cb>

Title:	Bowl
Date:	1870 – 1890
Material:	ceramic
Dimensions:	3.3 x 6.3 cm
Description:	Cream glaze with multi coloured butterflies, grasshoppers, dragonfly in enamel over glaze. Gold lustre rim and throughout decoration. Was thrown then finger shaped, trimmed foot.
Subject:	households Edith Morse Robb Edward S. Morse
Credit:	Gift of Catharine Robb Whyte, O. C., Banff, 1979
Catalogue Number:	104.20.0341 a,b

Images



This material is presented as originally created; it may contain outdated cultural descriptions and potentially offensive content. [Read more.](#)