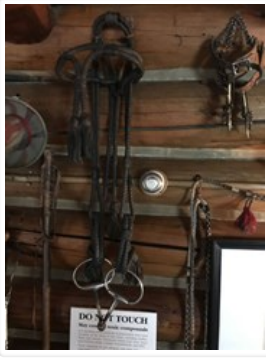


Research Collections

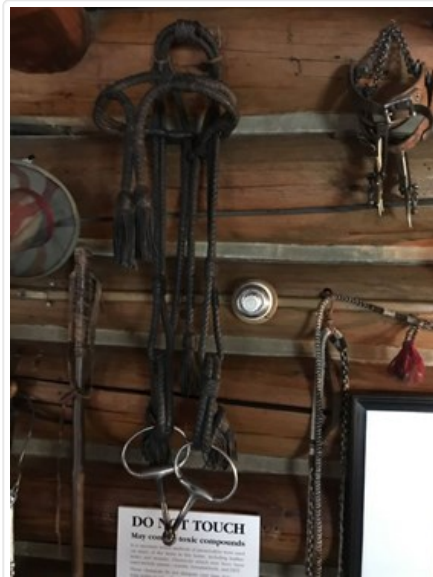


Single Bridle

<https://archives.whyte.org/en/permalink/artifact106.06.0022>

Title:	Single Bridle
Date:	1910 – 1920
Material:	skin; metal
Dimensions:	105.0 (longest strap) cm
Description:	A bridle with all head straps of braided leather and eight leather tassels. The reins are straps of leather attached with buckles through rings of a 'ring broken snaffle' bit.
Subject:	transportation riding animals, horses
Credit:	Gift of Pearl Evelyn Moore, Banff, 1979
Catalogue Number:	106.06.0022

Images



This material is presented as originally created; it may contain outdated cultural descriptions and potentially offensive content. [Read more.](#)