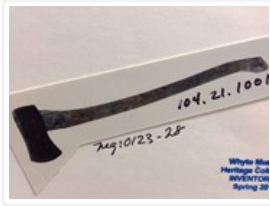


Research Collections

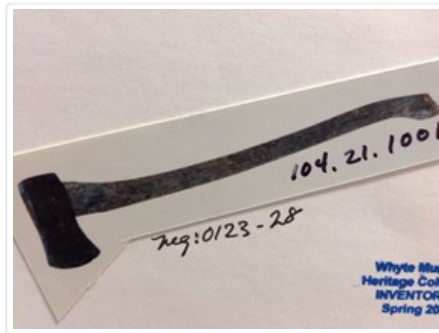


Head Axe

<https://archives.whyte.org/en/permalink/artifact104.21.1001>

Title:	Head Axe
Date:	1910 – 1930
Material:	metal; wood
Dimensions:	17.0 x 3.0 x 10.5 cm
Description:	Molded axehead, weathered wooden handle. Axehead 17.0 x 10.5 x 3.0. Well used, pitted and chipped. Stamped open side "Berghaus Sweden", handle curved, very weathered, end frayed. Head has 2 metal wedges hammered in to tighten.
Subject:	industry forestry
Credit:	Gift of Yves Muselle, 1971
Catalogue Number:	104.21.1001

Images



This material is presented as originally created; it may contain outdated cultural descriptions and potentially offensive content. [Read more.](#)



Beaded Vest

<https://archives.whyte.org/en/permalink/artifact103.05.1067>

Title:	Beaded Vest
Date:	1915 – 1930
Material:	skin; fibre; glass
Dimensions:	50.0 x 57.0 cm
Description:	sparsely beaded, lined vest, rickrack trimmed, vest sewn in 3 pieces, completely lined with floral patterned fabric, maroon coloured rickrack sewn on as trim on armholes and front opening, 4 patch pockets with floral bead decoration, 4 buckskin rosettes with thongs to tie for closure, 3 units of bead design, 9 cm long fringe sewn on back.
Subject:	Indigenous beadwork regalia Deer Lodge
Credit:	Gift of Robert Crosby, Banff, 1985
Catalogue Number:	103.05.1067

Images



This material is presented as originally created; it may contain outdated cultural descriptions and potentially offensive content. [Read more.](#)



Beaded Vest

<https://archives.whyte.org/en/permalink/artifact103.05.1068>

Title:	Beaded Vest
Date:	1915 – 1930
Material:	hide; fibre; glass; silk; cotton
Dimensions:	48.0 x 51.0 cm
Description:	embroidered floral pattern with fringes, 4 piece construction of vest, fully lined with blue fabric, 4 slit pockets, serrated edges, silk embroidered floral design both front edges, at each pocket and on the back shoulder, red, pink, yellow, mauve, green and grey, fringes sewn on front shoulder and inset at back seams, 3.0 cm wide belt straps, ca 21.0 long sewn at sides seams to buckle at back, metal buckle sewn one end, 2 each side buckskin thongs through front for closure.
Subject:	Indigenous beadwork regalia Deer Lodge souvenirs Metis
Credit:	Gift of Robert Crosby, Banff, 1985
Catalogue Number:	103.05.1068

Images



This material is presented as originally created; it may contain outdated cultural descriptions and potentially offensive content. [Read more.](#)



Gauntlet Gloves

<https://archives.whyte.org/en/permalink/artifact103.07.1053%20a%2cb>

Title:	Gauntlet Gloves
Date:	1915 – 1930
Material:	skin; fibre
Dimensions:	21.5 x 34.0 cm
Description:	Floral embroidery on white buckskin, machine sewn, embroidered on glove and gauntlet, same design but smaller on glove, open floral design: 3 flowers in red, purple buds, green leaves, bluestems, 5.0 long fringe sewn to gauntlets, pink cotton lining in gauntlet, decorative machine stitching on inside of gauntlet.
Subject:	Indigenous regalia embroidery needlework Deer Lodge souvenirs
Credit:	Gift of Robert Crosby, Banff, 1985
Catalogue Number:	103.07.1053 a,b

Images



This material is presented as originally created; it may contain outdated cultural descriptions and potentially offensive content. [Read more.](#)



Gauntlet Gloves

<https://archives.whyte.org/en/permalink/artifact103.07.1055%20a%2cb>

Title:	Gauntlet Gloves
Date:	1910 – 1940
Material:	skin; glass; fibre
Dimensions:	16.0 x 34.0 cm
Description:	Pair two-colour buckskin with beads and fringe, machine sewn, light buckskin on glove, 3 rows of black beads on back of hand, gauntlet dark buckskin with 3/4 of edging bound with light coloured buckskin, single flower motif: red, blue, yellow, stem and leaves black and orange, canvas lined gauntlet, fringe 7.0 long.
Subject:	Indigenous clothing beadwork Deer Lodge souvenirs regalia
Credit:	Gift of Robert Crosby, Banff, 1985
Catalogue Number:	103.07.1055 a,b

Images



This material is presented as originally created; it may contain outdated cultural descriptions and potentially offensive content. [Read more.](#)



Beaded Strip

<https://archives.whyte.org/en/permalink/artifact103.04.1023>

Title:	Beaded Strip
Date:	1910 – 1930
Material:	glass; metal; skin
Dimensions:	3.5 x 58.0 cm
Description:	Loom beaded, blue with yellow/red geometric design, 6 similar designs of arrows pointing towards centre of each in red, yellow and silver metal (rusted to a brown colour), each design separated with a red and metal diamond, 2 hooks and eyes sewn on to backskin onto bead strip each end.
Subject:	Indigenous beadwork clothing regalia Deer Lodge souvenirs
Credit:	Gift of Robert Crosby, Banff, 1985
Catalogue Number:	103.04.1023

Images



This material is presented as originally created; it may contain outdated cultural descriptions and potentially offensive content. [Read more.](#)



Arrows

<https://archives.whyte.org/en/permalink/artifact104.05.1006%20a-e>

Title:	Arrows
Date:	1910 – 1930
Material:	wood; feathers; sinew, string
Dimensions:	76.0 cm
Description:	wooden arrows with feather flights, feathers cut in half along stem and trimmed to shape, bound tightly top and bottom with sinew, a: 76.0 long x 1.0 dia. painted bands of colour underfeathers, blue, red, yellow, green. b: 74.5 long x .8 dia. colours red and blue. c: 74.5 long x .8 dia. colours green, yellow, blue, red. d: 69.4 long x.8 dia. colours blue, red e: 63.2 long, irregular and with a slight bend, feathers held in place with a string.
Subject:	Indigenous hunting Deer Lodge souvenirs
Credit:	Gift of Robert Crosby, Banff, 1985
Catalogue Number:	104.05.1006 a-e

Images



This material is presented as originally created; it may contain outdated cultural descriptions and potentially offensive content. [Read more.](#)



Quiver

<https://archives.whyte.org/en/permalink/artifact104.10.1007>

Title:	Quiver
Date:	1910 – 1930
Material:	skin; feathers; glass
Dimensions:	54.0 cm
Description:	Tall, cylindrical with dew claws and feathers, elk hide from 2 legs with dew claws intact sewn together to form tall cylinder. Round base 8.0 diameter and ca 2.5 high, hair is more red colour. Top section ca 15.0 with 2 more sets of dew claws, different colour than cylinder. Top edge has buckskin fringe ca 8.0 long, has 2 long wing feathers and downfeathers bound with blue and mauve beads tied on to fringe. Braided buckskin carrying handle 41.0 long.
Subject:	Indigenous hunting lodges Deer Lodge souvenirs
Credit:	Gift of Robert Crosby, Banff, 1985
Catalogue Number:	104.10.1007

Images



This material is presented as originally created; it may contain outdated cultural descriptions and potentially offensive content. [Read more.](#)



Beaded Moccasins

<https://archives.whyte.org/en/permalink/artifact103.03.1040%20a%2cb>

Title:	Beaded Moccasins
Date:	prior to 1930
Material:	skin; glass
Dimensions:	19.0 x 8.0 x 8.5 cm
Description:	Pair child's smoked skin moccasins, one piece construction with added fold over ankle flap, serrated edges, skin thong laced through flap to tighten, simple beaded floral design on vamp, 3 red leaves outlined with white and white stem.
Subject:	Indigenous regalia beadwork Mary Schaffer
Credit:	Gift of Charles C. Reid, Banff, Alberta, 1986
Catalogue Number:	103.03.1040 a,b

Images



This material is presented as originally created; it may contain outdated cultural descriptions and potentially offensive content. [Read more.](#)



Belts

<https://archives.whyte.org/en/permalink/artifact103.07.1048%20a%2cb>

Title:	Belts
Date:	1915 – 1925
Material:	hair, sheep
Dimensions:	3.0 x 128.0 cm
Description:	Narrow, woven belts, Central or South American, a: 128.0 x 3.0 colour, reversible woven belt, both edges are purple, red and white geometric pattern throughout with a pink and green centre stripe. b: 120.0 x 2.55, 3 colour reversible woven belt, red and white geometric design, one edge has darker red.
Subject:	Indigenous South American regalia
Credit:	Gift of Charles C. Reid, Banff, Alberta, 1986
Catalogue Number:	103.07.1048 a,b

Images



This material is presented as originally created; it may contain outdated cultural descriptions and potentially offensive content. [Read more.](#)

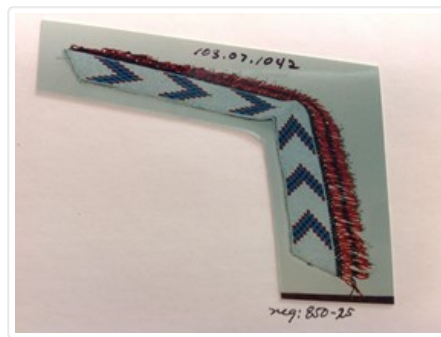


Beaded Collar

<https://archives.whyte.org/en/permalink/artifact103.07.1042>

Title:	Beaded Collar
Date:	1910 – 1930
Material:	glass; fibre
Description:	V-shaped, blue and red pattern on white, beaded fringe, 2 bead strips sewn together to a V point, each strip is 35.5 x 6.2, white background, 3 arrow style designs of red, light blue and dark blue rectangles, 5 beads x 2 rows, each pointing towards centre, from the outer edge hangs bead netting in brown beads from which hang ca 4.0 long red and black beads, inside edge has white bead edging heavy woven material is the backing, lined with silk, back lined with purple material.
Subject:	Indigenous clothing beadwork regalia
Credit:	Gift of Charles C. Reid, Banff, Alberta, 1986
Catalogue Number:	103.07.1042

Images



This material is presented as originally created; it may contain outdated cultural descriptions and potentially offensive content. [Read more.](#)



Chauffeur's Pin

<https://archives.whyte.org/en/permalink/artifact103.09.1035%20a%2cb>

Title:	Chauffeur's Pin
Date:	1918 – 1919
Material:	metal
Description:	Chauffeur's pins, 1918 and 1919. (a) oval 3.0 x 4.0, silver coloured, "32 CHAUFFEUR'S 1918", one piece metal pin soldered on back (b) hexagonal 3.8; brass coloured "24 CHAUFFEUR'S 1919", one piece metal pin soldered on back.
Subject:	parks tourism
Credit:	Gift of Americo Smaniotto, Canmore, 1970
Catalogue Number:	103.09.1035 a,b

Images



This material is presented as originally created; it may contain outdated cultural descriptions and potentially offensive content. [Read more.](#)



Beaded Jacket

<https://archives.whyte.org/en/permalink/artifact103.05.1063>

Title:	Beaded Jacket
Date:	1910 – 1930
Material:	skin; glass; metal; bone
Dimensions:	55.0 x 65.0 cm
Description:	Mary Schäffer's buckskin jacket, back has 2 rows of sewn on fringes, scalloped top edge, each fringe is 8.0- 10.0 long, has a blue pony bead alternating 2.0 and 4.0 from top, each is secured with a knot, continues over shoulder to front, extra long fringe with beads on full length of arms, on chest both sides of opening, ca 13.0 widebands of 9.0 long hair beads and alternating blue beads, 2 patch pockets, 5 brass buttons.
Subject:	sports riding Mary Schäffer
Credit:	Gift of Charles C. Reid, Banff, Alberta, 1986
Catalogue Number:	103.05.1063

Images



This material is presented as originally created; it may contain outdated cultural descriptions and potentially offensive content. [Read more.](#)



Single-Barrel Shotgun

<https://archives.whyte.org/en/permalink/artifact104.04.1003>

Title:	Single-Barrel Shotgun
Date:	1910 – 1936
Material:	metal; wood
Dimensions:	12.0 x 4.0 x 98.0 cm
Description:	.401 Caliber, single-barrel shotgun, Model 1910 S.L., solid wood shaped buttstock and fore-stock, wooden butt plate screwed to buttstock and marked with oval shaped manufacturer's stamp. Marks: "Nickel steel barrel - especially for smokeless powder" stamped on side of barrel near site, also stamped on barrel: "manufactured by the winchester repeating arms co. new haven. conn. u.s.a. self loading model 1910. pat. aug.27.dec.10.1901.feb.25.1902. feb.17.dec.22.1903.aug.21.1906.oct.30.1906."; "-.401 CAL."; stamped twice near trigger: "87"
Subject:	sports hunting
Credit:	Gift of Mabel Aubin, Banff, 1970
Catalogue Number:	104.04.1003

Images



This material is presented as originally created; it may contain outdated cultural descriptions and potentially offensive content. [Read more.](#)



Gun Case

<https://archives.whyte.org/en/permalink/artifact104.10.1003>

Title:	Gun Case
Date:	1910 – 1930
Material:	hide, buckskin
Dimensions:	17.0 x 90.0 cm
Description:	bison hide gun case; John Bearspaw's; one piece buffalo hide folded over lengthwise; sewn together with sinew in long basting stitches; closed at bottom, buckskin fringe; fold over closure has 2 holes near tip; buckskin thong laced through front to coincide with flap; 2 hide loops (6.0 x 2.5) sewn into seam.
Subject:	Indigenous hunting McLean Family
Credit:	George McLean, Morley, 1970
Catalogue Number:	104.10.1003

Images



This material is presented as originally created; it may contain outdated cultural descriptions and potentially offensive content. [Read more.](#)



Double Pointed Pick

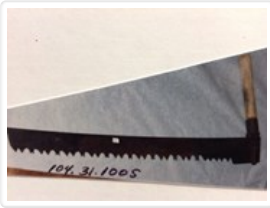
<https://archives.whyte.org/en/permalink/artifact104.31.1002>

Title:	Double Pointed Pick
Date:	1910 – 1930
Material:	metal; wood
Dimensions:	41.0 x 81.5 cm
Description:	cast iron, double headed pick, wooden handle, squared cast iron comes to a point both ends, collar welded on to head and goes up handle 9.5 cm. oval collar 2.0 wide on end of handle, 2 spikes are driven into centre of handle at head end, on sides of sleeve: "The Hardy Patent F??? Co Ltd Sheffield; other side: "Universal".
Subject:	industry mining
Credit:	Gift of Unknown, 1968
Catalogue Number:	104.31.1002

Images



This material is presented as originally created; it may contain outdated cultural descriptions and potentially offensive content. [Read more.](#)



Saw

<https://archives.whyte.org/en/permalink/artifact104.31.1005>

Title: Saw

Date: 1910 – 1940

Material: metal; wood

Dimensions: 32.7 x 83.0 cm

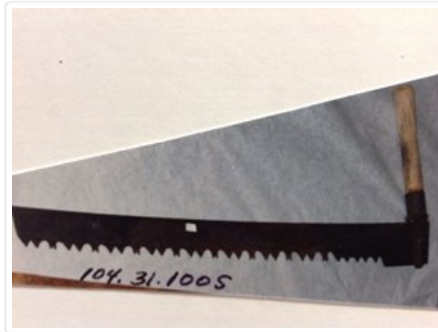
Description: One handed saw, steel blade 83.0 x 8.3, wooden handle 3.0 diameter has a steel collar and loop on end which clamps down on to the blade.

Subject: industry
mining
Natalco
National Talc Co.

Credit: Gift of Bob Hawes, 1972

Catalogue Number: 104.31.1005

Images



This material is presented as originally created; it may contain outdated cultural descriptions and potentially offensive content. [Read more.](#)



Bow Saw

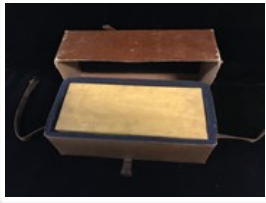
<https://archives.whyte.org/en/permalink/artifact104.49.1007>

Title:	Bow Saw
Date:	1910 – 1930
Material:	wood; metal; fibre
Dimensions:	33.5 x 83.0 cm
Description:	Wooden frame, narrow blade. Handles are solid wood 4.0 x 1.2, rounded at the bottom to 3.0 dia. Shaped dowel through centre holds the blade, the dowels extend 7.5, crossbeam 2.5 square wood is mortised for handles to go through, top tension is thick string twisted to tighten with a 17.5 x 2.0 x 0.7 piece of wood, the blade is 0.6wide.
Subject:	industry lumber Vern Castella woodwork hobbies model building
Credit:	Gift of Vern (Mrs) Castella, Banff, 1970
Catalogue Number:	104.49.1007

Images



This material is presented as originally created; it may contain outdated cultural descriptions and potentially offensive content. [Read more.](#)

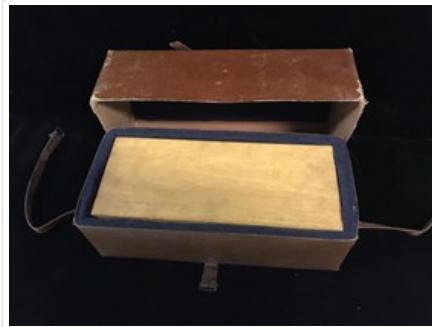


Lantern Slide Case

<https://archives.whyte.org/en/permalink/artifact105.05.1010%20a-c>

Title:	Lantern Slide Case
Date:	1910 – 1925
Material:	wood; fibre; paper; skin; metal
Description:	<p>Wooden box with slots and padded field case. (a) wooden box, 32.4 x 10.5 x 13.2, 2 hook and eye latches on front. 64 slots with paper board dividers inside. "CAUTION" label inside lid, which reads "NEVER SHOW LANTERN SLIDES IN A STANDARD MOTION PICTURE MACHINE. THIS TYPE OF PROJECTOR WILL BREAK ALL SLIDES SHOWN." blue pencil writing "55 Slides, 54 neg. ———" White paper dot on hinge edge, brass hinges (b) rust brown pressed cardboard box, 36.0 x 11.4 x 16.6, fastened together with brass tacks. 1.5 thick felt padding interior. Leather straps with buckle fasteners running length and width (c) pressed cardboard box, 37.5 x 11.7 x 17.7, lid fastened with staples at ends. Felt padding interior top. A little wear on corner edges. Manufacturer's stamp interior "Manufactured by [ineligible] BOX CO. UNITED OTTAWA, CANADA." fragments of destination label exterior, "Banff, Alberta."</p>
Subject:	<p>photography</p> <p>Rev Tom Lonsdale</p> <p>Mary Schaffer Warren</p>
Credit:	Gift of Tom Lonsdale, Banff, 1976
Catalogue Number:	105.05.1010 a-c

Images



This material is presented as originally created; it may contain outdated cultural descriptions and potentially offensive content. [Read more.](#)



Lantern Slide Projector Projector

<https://archives.whyte.org/en/permalink/artifact105.05.1009%20a-d>

Title:	Lantern Slide Projector Projector
Date:	1910 – 1925
Material:	metal; glass; fibre; wood;
Description:	Lantern slide projector, Tom Lonsdale's. Black, rectangular box, 23.1 x 11.7 x 11.7, housing concave mirror in holder, projection bulb (500 W) 2 convex glass, narrow slot for slide carrier. Wooden track with squared centre structure travelling bracket with 2 openings for transparency (9.1 x 7.6) Accordion bellows with metal plate holding lens apparatus, lens, black and silver in colour extending (10.2 with 5.5 diameter). Turn knob fine focus, "H" shape stand attached to bottom centre, telescopic rods either side bracing bellows and light bulb socket. Copper colour cloth covered cord. Hand switch and M/F plugs approximately middle of cord, male plug on end, housing enclosure lid. Overall dimensions: L:40.5, H: 27.3,W: 30.5.
Subject:	photography Rev. Tom Lonsdale Mary Schaffer Warren
Credit:	Gift of Tom Lonsdale, Banff, 1976
Catalogue Number:	105.05.1009 a-d

Images



This material is presented as originally created; it may contain outdated cultural descriptions and potentially offensive content. [Read more.](#)