



Pin

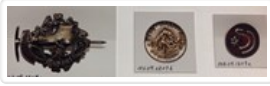
<https://archives.whyte.org/en/permalink/artifact103.09.1200>

Title:	Pin
Date:	1930 – 1950
Material:	metal; hair
Dimensions:	6.0 x 14.0 cm
Description:	Metal cone shaped pin with elk or deer emblem and oak leaves in relief. Brush-like tuft of natural animal hair, light to dark with grizzled tips protrudes from metal cone with green yarn at base of tuft. Possibly a fraternal organization pin.
Subject:	organizations Ernst Niederer guiding
Credit:	Gift of Ernie Niederer, Victoria, 2001
Catalogue Number:	103.09.1200

Images



This material is presented as originally created; it may contain outdated cultural descriptions and potentially offensive content. [Read more.](#)



Pin

<https://archives.whyte.org/en/permalink/artifact103.09.1209%20a-c>

Title:	Pin
Date:	1930 – 1950
Material:	metal; enamel
Dimensions:	1.4 (a) x 3.8 (a) x 6.1 (a) cm
Description:	Three metal pins.a) Pine wreath with hiking boot, flower, rope, and banner with "INNSBRUCK" on top and a ice axe behind.b) Gold coloured round pin (2.5 cm dia) with a mountain in the centre and "BERG.SPORT.CLUB* ST GALLEN" around the edge. The pin has "Ch.DUBOIS GENEVE" on the back.c) Red enamelled round pin (2.2cm dia) with a silver coloured edge and raised decoration - a maple leaf and two shapes (an "S" shape and another line that follows the bottom curve of the "S"). The back of the pin has a maker's mark and "STERLING." The pin has a screw-on backing with teeth.
Subject:	sports skiing climbing guiding ski clubs ski schools Ernst Niederer
Credit:	Gift of Ernie Niederer, Victoria, 2001
Catalogue Number:	103.09.1209 a-c

Images



This material is presented as originally created; it may contain outdated cultural descriptions and potentially offensive content. [Read more.](#)



Pin

<https://archives.whyte.org/en/permalink/artifact105.02.1091>

Title:	Pin
Date:	1930 – 1950
Material:	metal
Dimensions:	3.3 x 1.6 cm
Description:	Mounted red coat "R.C.M.P. CANADA". A red-coated Mountie, with blue breeches sits astride a silver coloured horse. The horse stands on a green base on which is: "R.C.M.P. CANADA" on the back "H.W.N. Made in England".
Subject:	souvenirs R.C.M.P.
Credit:	Purchased from Phyllis Cain, Banff, 1988
Catalogue Number:	105.02.1091

Images



This material is presented as originally created; it may contain outdated cultural descriptions and potentially offensive content. [Read more.](#)



Pin

<https://archives.whyte.org/en/permalink/artifact103.09.0050%20a%2cb>

Title:	Pin
Date:	1915 – 1935
Material:	metal
Dimensions:	1.4 x 1.1 cm
Description:	A pair of studs with screw backs. Each stud has a design of a round wreath with a ram's head at the bottom of the wreath. The centre of the wreath contains a relief of a cooking pot over a campfire, with the pot hanging between two forked sticks.
Subject:	insignia camping organizations
Credit:	Gift of Pearl Evelyn Moore, Banff, 1979
Catalogue Number:	103.09.0050 a,b

Images



This material is presented as originally created; it may contain outdated cultural descriptions and potentially offensive content. [Read more.](#)



Pin

<https://archives.whyte.org/en/permalink/artifact103.09.0066>

Title:	Pin
Date:	1939 – 1945
Material:	metal; enamel
Dimensions:	0.8 x 1.7 cm
Description:	A small rectangular pin with a red border and two blue stars on a white field in the centre.
Subject:	military insignia uniforms
Credit:	Gift of Pearl Evelyn Moore, Banff, 1979
Catalogue Number:	103.09.0066

Images



This material is presented as originally created; it may contain outdated cultural descriptions and potentially offensive content. [Read more.](#)



Pin

<https://archives.whyte.org/en/permalink/artifact103.09.0075>

Title:	Pin
Date:	1915 – 1915
Material:	metal, brass
Dimensions:	4.0 x 3.7 cm
Description:	A pin in the shape of a crown with a crowned lion standing on top.
Subject:	military insignia uniforms Philip Moore
Credit:	Gift of Pearl Evelyn Moore, Banff, 1979
Catalogue Number:	103.09.0075

Images



This material is presented as originally created; it may contain outdated cultural descriptions and potentially offensive content. [Read more.](#)



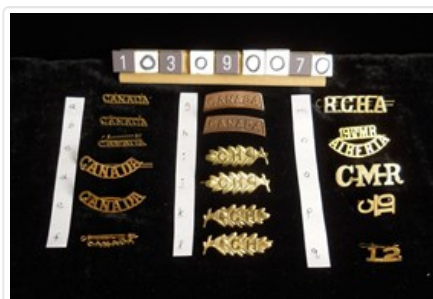
Pin

<https://archives.whyte.org/en/permalink/artifact103.09.0070%20a-q>

Title:	Pin
Date:	1914 – 1945
Material:	metal; brass

Description:	<p>A collection of seventeen brass military pins: (a-c) three gold-coloured metal pins (4.0 x 0.9cm) with cut-out letters reading "CANADA" joined with bars at the top and bottom. (d-e) two gold-coloured metal pins (5.2 x 1.0 cm) with cut-out letters reading "CANADA" forming an arch and joined at the top and bottom with bars. (f) one gold-coloured metal pin (3.5 x 0.7 cm) with cut-out letters reading "CANADA" with the letters joined by a bar across the middle on the reverse side. (g-h) two copper-coloured metal pins (5.0 x 1.5 cm), each with a slightly curved solid bar face, with "CANADA" in relief. (i-l) four gold-coloured metal pins (5.0 x 2.0 cm), two sets of two, with each pin depicting an oak leaf and an acorn on a short twig. The letters "CH" are centred on the leaf ("CH" - Calgary Highlanders). (m) one gold-coloured metal pin (5.3 x 1.5 cm) with cut-out letters "R.C.H.A." (Royal Canadian Horse Artillery) joined at the top and bottom with a bar. (n) one gold-coloured metal pin (5.0 x 2.5cm) with "19th MR" (Mounted Rifles) in cut-out letters that are joined horizontally by bars at the top and bottom. The word "ALBERTA" is in an arch below the "19th MR" joined by curved bars at the top and bottom. (o) one gold-coloured metal pin (5.0 x 2.7 cm) with the cut-out letters "CMR" (Canadian Mounted Rifles) joined by a bar from the bottom of the "C" to the "M", and from the centre of the "M" to the "R". (p) one gold-coloured metal pin (1.7 x 2.8 cm) with a cut-out letter "C" sitting atop a bar which joins the numeral "10" below. (q) one gold-coloured metal pin (2.6 x 1.3 cm) with a cut-out numeral "12" joined by a bar at the bottom.</p>
Subject:	<p>military</p> <p>insignia</p> <p>uniforms</p> <p>Calgary Highlanders</p> <p>Canadian Mounted Rifles</p> <p>Royal Canadian Horse Artillery</p>
Credit:	Gift of Pearl Evelyn Moore, Banff, 1979
Catalogue Number:	103.09.0070 a-q

Images



This material is presented as originally created; it may contain outdated cultural descriptions and potentially offensive content. [Read more.](#)



Pin

<https://archives.whyte.org/en/permalink/artifact103.09.0073%20a-l>

Title:	Pin
Date:	1914 – 1945
Material:	metal, brass
Description:	<p>A collection of pin sets from Alberta and Winnipeg regiments: a) One brass pin (4.7 x 3.7 cm) cut out in the shape of the Alberta coat of arms (mountains in lower half and cross in upper) with four windmill sails behind and maple leaf on either side. A banner below the shield reads "Depot Battn, Alberta Regiment". There is a crown at the top of the pin with "Canada" below it.b-f) Five pins (3.1 x 2.6 cm) with the same design as (a), but these pins are smaller and shinier. g) One brass pin (3.9 x 4.0 cm) in the shape of a maple leaf with the Alberta coat of arms in middle and crown atop the coat of arms. A banner below the coat of arms reads "Alberta Overseas Batt'y XXXI".h-j) Three pins (3.9 x 2.9) with the same design as (h), but smaller in size. k-l) Two pins (3.5 x 3.8) in the shape of a maple leaf with a coat-of-arms at the centre containing three wheat sheaves in bottom half, and a train engine in the top half surmounted by a buffalo. A banner underneath the coat of arms reads "City of Winnipeg XXVIII Batt'n".</p>
Subject:	military uniforms insignia
Credit:	Gift of Pearl Evelyn Moore, Banff, 1979
Catalogue Number:	103.09.0073 a-l

Images



This material is presented as originally created; it may contain outdated cultural descriptions and potentially offensive content. [Read more.](#)



Pin

<https://archives.whyte.org/en/permalink/artifact103.09.0074%20a-f>

Title:	Pin
Date:	1914 – 1945
Material:	metal, brass
Dimensions:	3.2 (a-c); 3.3 (d,e); 4.2 (f) x 3.0 (a-c); 3.3 (d,e); 4.0 (f) cm
Description:	<p>A collection of six military pins in the shape of a maple leaf, with a crown in relief at the centre and a banner beneath spelling "CANADA": a-c) Three pins that are reddish in colour. d,e) Two pins that are a gold colour. f) One pin with a dark patina.</p>
Subject:	<p>military</p> <p>uniforms</p> <p>insignia</p>
Credit:	Gift of Pearl Evelyn Moore, Banff, 1979
Catalogue Number:	103.09.0074 a-f

Images



This material is presented as originally created; it may contain outdated cultural descriptions and potentially offensive content. [Read more.](#)



Pin

<https://archives.whyte.org/en/permalink/artifact105.02.0074>

Title:	Pin
Date:	1930 – 1950
Material:	metal
Dimensions:	0.8 x 2.6 x 5.8 cm
Description:	A gold-coloured pressed relief metal pin in the shape of an oval belt reading "Cruft's Dog Show" around an intertwined monogram "SSC" at centre. There is a crown at the top (similar to military buttons #103.07.0060 c-g) of the pin. The reverse image of the impression can be seen on the back, and a hooked pin is soldered to the top of the crown.
Subject:	animals, dog insignia souvenirs
Credit:	Gift of Pearl Evelyn Moore, Banff, 1979
Catalogue Number:	105.02.0074

Images



This material is presented as originally created; it may contain outdated cultural descriptions and potentially offensive content. [Read more.](#)



Pin

<https://archives.whyte.org/en/permalink/artifact103.09.0124>

Title:	Pin
Date:	1930 – 1950
Material:	metal
Dimensions:	1.9 x 0.5 x 2.2 cm
Description:	<p>A small gold coloured circle with "A.U.W." on yellow banner across. Circle textured to give impression of twisted fibres. Yellow enamelled banner curls from behind, flows across centre of cut out circle, and rolls behind on the opposite side. Enamelled in blue on banner are the letters. Hinged pin horizontally across back fastens under curled hook.</p>
Subject:	<p>Whyte home organizations A.U.W.</p>
Credit:	Gift of Catharine Robb Whyte, O. C., Banff, 1979
Catalogue Number:	103.09.0124

Images



This material is presented as originally created; it may contain outdated cultural descriptions and potentially offensive content. [Read more.](#)