

Research Collections



Pin

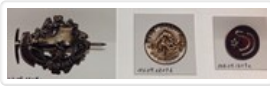
<https://archives.whyte.org/en/permalink/artifact103.09.1200>

Title:	Pin
Date:	1930 – 1950
Material:	metal; hair
Dimensions:	6.0 x 14.0 cm
Description:	Metal cone shaped pin with elk or deer emblem and oak leaves in relief. Brush-like tuft of natural animal hair, light to dark with grizzled tips protrudes from metal cone with green yarn at base of tuft. Possibly a fraternal organization pin.
Subject:	organizations Ernst Niederer guiding
Credit:	Gift of Ernie Niederer, Victoria, 2001
Catalogue Number:	103.09.1200

Images



This material is presented as originally created; it may contain outdated cultural descriptions and potentially offensive content. [Read more.](#)



Pin

<https://archives.whyte.org/en/permalink/artifact103.09.1209%20a-c>

Title:	Pin
Date:	1930 – 1950
Material:	metal; enamel
Dimensions:	1.4 (a) x 3.8 (a) x 6.1 (a) cm
Description:	Three metal pins.a) Pine wreath with hiking boot, flower, rope, and banner with "INNSBRUCK" on top and a ice axe behind.b) Gold coloured round pin (2.5 cm dia) with a mountain in the centre and "BERG.SPORT.CLUB* ST GALLEN" around the edge. The pin has "Ch.DUBOIS GENEVE" on the back.c) Red enamelled round pin (2.2cm dia) with a silver coloured edge and raised decoration - a maple leaf and two shapes (an "S" shape and another line that follows the bottom curve of the "S"). The back of the pin has a maker's mark and "STERLING." The pin has a screw-on backing with teeth.
Subject:	sports skiing climbing guiding ski clubs ski schools Ernst Niederer
Credit:	Gift of Ernie Niederer, Victoria, 2001
Catalogue Number:	103.09.1209 a-c

Images



This material is presented as originally created; it may contain outdated cultural descriptions and potentially offensive content. [Read more.](#)



Pin

<https://archives.whyte.org/en/permalink/artifact105.02.1091>

Title:	Pin
Date:	1930 – 1950
Material:	metal
Dimensions:	3.3 x 1.6 cm
Description:	Mounted red coat "R.C.M.P. CANADA". A red-coated Mountie, with blue breeches sits astride a silver coloured horse. The horse stands on a green base on which is: "R.C.M.P. CANADA" on the back "H.W.N. Made in England".
Subject:	souvenirs R.C.M.P.
Credit:	Purchased from Phyllis Cain, Banff, 1988
Catalogue Number:	105.02.1091

Images



This material is presented as originally created; it may contain outdated cultural descriptions and potentially offensive content. [Read more.](#)



Pin

<https://archives.whyte.org/en/permalink/artifact103.09.0066>

Title:	Pin
Date:	1939 – 1945
Material:	metal; enamel
Dimensions:	0.8 x 1.7 cm
Description:	A small rectangular pin with a red border and two blue stars on a white field in the centre.
Subject:	military insignia uniforms
Credit:	Gift of Pearl Evelyn Moore, Banff, 1979
Catalogue Number:	103.09.0066

Images



This material is presented as originally created; it may contain outdated cultural descriptions and potentially offensive content. [Read more.](#)



Pin

<https://archives.whyte.org/en/permalink/artifact103.09.0124>

Title:	Pin
Date:	1930 – 1950
Material:	metal
Dimensions:	1.9 x 0.5 x 2.2 cm
Description:	<p>A small gold coloured circle with "A.U.W." on yellow banner across. Circle textured to give impression of twisted fibres. Yellow enamelled banner curls from behind, flows across centre of cut out circle, and rolls behind on the opposite side. Enamelled in blue on banner are the letters. Hinged pin horizontally across back fastens under curled hook.</p>
Subject:	<p>Whyte home organizations A.U.W.</p>
Credit:	Gift of Catharine Robb Whyte, O. C., Banff, 1979
Catalogue Number:	103.09.0124

Images



This material is presented as originally created; it may contain outdated cultural descriptions and potentially offensive content. [Read more.](#)



Pin

<https://archives.whyte.org/en/permalink/artifact105.02.0074>

Title:	Pin
Date:	1930 – 1950
Material:	metal
Dimensions:	0.8 x 2.6 x 5.8 cm
Description:	A gold-coloured pressed relief metal pin in the shape of an oval belt reading "Cruft's Dog Show" around an intertwined monogram "SSC" at centre. There is a crown at the top (similar to military buttons #103.07.0060 c-g) of the pin. The reverse image of the impression can be seen on the back, and a hooked pin is soldered to the top of the crown.
Subject:	animals, dog insignia souvenirs
Credit:	Gift of Pearl Evelyn Moore, Banff, 1979
Catalogue Number:	105.02.0074

Images



This material is presented as originally created; it may contain outdated cultural descriptions and potentially offensive content. [Read more.](#)