



### Old Banff Springs Hotel

<https://archives.whyte.org/en/permalink/artifactunk.02.11>

Artist:	Unknown
Title:	Old Banff Springs Hotel
Date:	n.d.
Medium:	oil on wood
Dimensions:	37.3 x 115.2 cm
Description:	<p>A painting on a solid piece of wood of the early Banff Springs Hotel, probably 1888 circa. The Bow River runs in the left foreground of picture. It is a realistic painting of the mountains, Sulphur, Goat and the back of Rundle. The colours are darkish greens, blue river, the sky is yellowish (the sky looks unfinished).</p>
Subject:	<p>landscape</p> <p>Banff Springs Hotel</p> <p>Canadian Rockies</p> <p>architecture</p> <p>river</p>
Credit:	Purchased from Thomas N. Lackey, Halifax, 1983
Catalogue Number:	UnK.02.11

### Images



This material is presented as originally created; it may contain outdated cultural descriptions and potentially offensive content. [Read more.](#)



## Small lake in Mountains

<https://archives.whyte.org/en/permalink/artifactunk.03.13>

Artist:	Unknown
Title:	Small lake in Mountains
Date:	1978
Medium:	graphite on paper
Dimensions:	22.5; 26.7 x 26.7; 32.1 cm
Description:	A pencil drawing of a small lake in the foreground, the immediate foreground is marshy and some trees, this surrounds the lake; mountains in background; a few clouds indicated. A small brass plaque with the drawing reads: To Lillian Gest In Appreciation The Lake O'Hara Trails Club 1979.
Subject:	landscape mountains lake
Credit:	Gift of Lillian Gest, Philadelphia, USA, 1986
Catalogue Number:	UnK.03.13

## Images



This material is presented as originally created; it may contain outdated cultural descriptions and potentially offensive content. [Read more.](#)



## Untitled [Mountains]

<https://archives.whyte.org/en/permalink/artifactunk.03.17>

Artist:	Unknown
Title:	Untitled [Mountains]
Date:	1982
Medium:	graphite on paper
Description:	Graphite drawing of mountains. Dark rounded shapes at bottom. Lighter, vertical peaks at the top. Beginning of drawing on verso.
Subject:	abstract landscape mountains
Credit:	Gift of Harold C. Whyte, Penticton, 2003
Catalogue Number:	UnK.03.17

## Images



This material is presented as originally created; it may contain outdated cultural descriptions and potentially offensive content. [Read more.](#)



## Innesbruck M. Theresienstrasse

<https://archives.whyte.org/en/permalink/artifactunk.04.02>

Artist:	Unknown
Title:	Innesbruck M. Theresienstrasse
Date:	n.d.
Medium:	etching on cloth
Dimensions:	17.0 x 20.3 cm
Description:	A street scene in Innesbruck, Austria. Blue sky across top of picture, purple mountain range with some snow and a smaller green mountain backdrops the street scene. A tall statue is in the centre of the street.
Subject:	architecture, urban mountains landscape
Credit:	Gift of Catharine Robb Whyte, O. C., Banff, 1979
Catalogue Number:	UnK.04.02

### Images



This material is presented as originally created; it may contain outdated cultural descriptions and potentially offensive content. [Read more.](#)



## Kabuki Theatre Poster

<https://archives.whyte.org/en/permalink/artifactunk.04.08>

Artist:	Unknown
Title:	Kabuki Theatre Poster
Date:	n.d.
Medium:	woodblock on paper
Dimensions:	24.5 x 18.5 cm
Description:	Small Kabuki Theatre Poster. A Man stands with legs far apart leaning back far to the right with his body and face facing left. He holds an umbrella that is cropped off by the edge of the print. He stands on a green ground. The background is dark and features an almost black sky, a darkbrown hill, a small blue mountain, and a river. There are 2 text panels down the left side. Translator of print commented : Drawn by: Ichi bai tei(?), sai(?) ho. In images of the floating world Ichibaishi is also known as Yoshimine.
Subject:	figure Japanese Kabuki landscape Japan
Credit:	Gift of Catharine Robb Whyte, O. C., Banff, 1979
Catalogue Number:	UnK.04.08

## Images



This material is presented as originally created; it may contain outdated cultural descriptions and potentially offensive content. [Read more.](#)



## Watermill and Waterfall

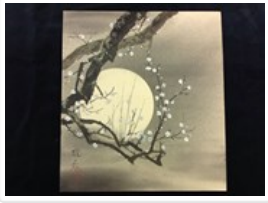
<https://archives.whyte.org/en/permalink/artifactunk.05.03>

Artist:	Unknown
Title:	Watermill and Waterfall
Date:	c. 1930
Medium:	ink and colour on silk; card
Dimensions:	27.2 x 24.1 cm
Description:	<p>A watermill is in top right of picture, a stone basement, wooden building with a large waterwheel, a waterfall comes tumbling down from wheel; a grassy slope is in the foreground, lake in foreground; a waterfall tumbles down from left top of picture; the paper is gold trimmed; the foldover paper presentation cover has Japanese writing: Square Paper for Drawing/painting (translation by Maskao Tani, 8/86). A business card was enclosed in the case: printed: Tsunejiro Miyaoka; handwritten: To Mr. Jack White with kind remembrances, Banff. July 24th 1935.</p>
Subject:	<p>landscape</p> <p>waterfall</p>
Credit:	Gift of Catharine Robb Whyte, O. C., Banff, 1979
Catalogue Number:	UnK.05.03

## Images



This material is presented as originally created; it may contain outdated cultural descriptions and potentially offensive content. [Read more.](#)



## Untitled [Moon through Branches]

<https://archives.whyte.org/en/permalink/artifactunk.05.09>

Artist:	Unknown
Title:	Untitled [Moon through Branches]
Date:	n.d.
Medium:	ink and colour on silk; paper
Dimensions:	27.0 x 24.0 cm
Description:	Colour: black; green; white; two branches of a tree in bloom across the lower left corner in front of a huge full moon.
Subject:	landscape night time
Credit:	Gift of Catharine Robb Whyte, O. C., Banff, 1977
Catalogue Number:	UnK.05.09

### Images



This material is presented as originally created; it may contain outdated cultural descriptions and potentially offensive content. [Read more.](#)