

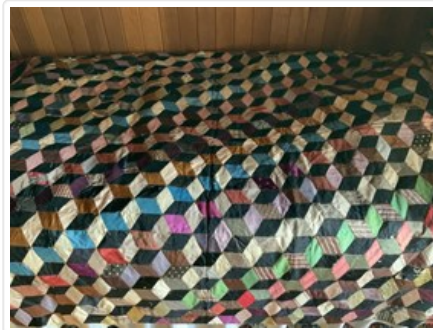


Quilt

<https://archives.whyte.org/en/permalink/artifact102.01.0012>

Title:	Quilt
Date:	1870 – 1890
Material:	fibre
Dimensions:	150.0 x 165.0 cm
Description:	Optical illusion quilt made with multi-coloured scraps of cloth handquilted into cube pattern. The quilt is lined with paper and backed with cotton. Many squares are deteriorating.
Subject:	households furnishings crafts
Credit:	Gift of Pearl Evelyn Moore, Banff, 1979
Catalogue Number:	102.01.0012

Images



This material is presented as originally created; it may contain outdated cultural descriptions and potentially offensive content. [Read more.](#)



Doll Quilt

<https://archives.whyte.org/en/permalink/artifact102.01.0023>

Title:	Doll Quilt
Date:	1870 – 1890
Material:	fibre
Dimensions:	42.0 x 42.0 cm
Description:	Japanese silk quilt for doll to sit on, backing white silk. Probably has silk batting inside, front has 4 panels ca. 11.0 wide with 3 alternating designs, grey with light brown each end, orange with orange then green with beige, 5 silk string loops sewn through quilt at 2 ends, 2 sides and middle.
Subject:	households furnishings playthings children Japanese E.S. Morse
Credit:	Gift of Catharine Robb Whyte, O. C., Banff, 1979
Catalogue Number:	102.01.0023

Images



This material is presented as originally created; it may contain outdated cultural descriptions and potentially offensive content. [Read more.](#)



Blanket

<https://archives.whyte.org/en/permalink/artifact102.01.1010>

Title:	Blanket
Date:	c. 1875
Material:	fibre; cotton; wool
Dimensions:	100 x 250 cm
Description:	Patterned blue and beige blanket with beige fringe along the edge.
Subject:	households Sharples weaving
Credit:	Gift of Harold C. Whyte, Penticton, 2012
Catalogue Number:	102.01.1010

Images



This material is presented as originally created; it may contain outdated cultural descriptions and potentially offensive content. [Read more.](#)



Prayer Rug

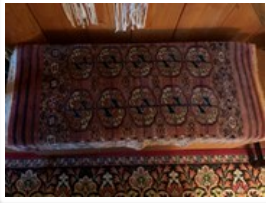
<https://archives.whyte.org/en/permalink/artifact102.02.0002>

Title:	Prayer Rug
Date:	1870 – 1900
Material:	hair, sheep; fibre, hemp
Dimensions:	52.0 x 65.0 cm
Description:	Small wool rug woven on a hemp warp with an intricate geometric design. Deep red is the dominant colour, along with yellow and white. Possibly a prayer rug, this piece has been repaired, with a loss of 10 cm weaving in length.
Subject:	households furnishings weaving
Credit:	Gift of Pearl Evelyn Moore, Banff, 1979
Catalogue Number:	102.02.0002

Images



This material is presented as originally created; it may contain outdated cultural descriptions and potentially offensive content. [Read more.](#)

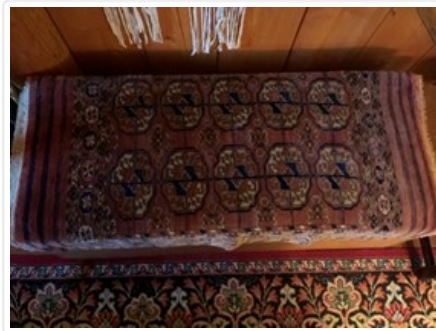


Prayer Rug

<https://archives.whyte.org/en/permalink/artifact102.02.0025>

Title:	Prayer Rug
Date:	1875 – 1900
Material:	hair, sheep
Dimensions:	100.0 x 110.0 cm
Description:	Nearly square Persian rug with velvety brick-red background. Fifteen medallion shapes worked in pink and white outlined in dark blue are aligned in three rows in the central square section, wide geometric border of the same colours but smaller geometric motif. Rug fringed at ends with three narrow blue lines woven between the border and the fringe at these ends, side edges bound with blue.
Subject:	households furnishings
Credit:	Gift of Catharine Robb Whyte, O. C., Banff, 1979
Catalogue Number:	102.02.0025

Images



This material is presented as originally created; it may contain outdated cultural descriptions and potentially offensive content. [Read more.](#)



Throw Rug

<https://archives.whyte.org/en/permalink/artifact102.02.0032>

Title:	Throw Rug
Date:	1875 – 1895
Material:	hair, sheep
Dimensions:	80.0 x 117.0 cm
Description:	Multi-coloured Turkoman rug with very close pile (700-800 knots per square inch). Rust-brown background with navy blue as predominant pattern colour, patterned primarily in geometric shapes and abstract flowers. Series of sixteen medallions dominate pattern. This series is framed by a complex of colourful squares and diagonal lines. Abstract floral motif runs the length and 17.5 cm. of the width - TARRANTULA pattern.
Subject:	households furnishings Turkestan
Credit:	Gift of Catharine Robb Whyte, O. C., Banff, 1979
Catalogue Number:	102.02.0032

Images



This material is presented as originally created; it may contain outdated cultural descriptions and potentially offensive content. [Read more.](#)



Dining Chair

<https://archives.whyte.org/en/permalink/artifact102.03.0006%20a%2cb>

Title:	Dining Chair
Date:	1875 – 1880
Material:	wood; fibre
Dimensions:	109.3 x 58.0 x 61.3 cm
Description:	Two Chippendale arm chairs used for dining. Each chair is made of wood with rust-coloured velvet upholstery. The backrest is a splat with three scroll-sawed vertical openings.
Subject:	households furniture
Credit:	Gift of Pearl Evelyn Moore, Banff, 1979
Catalogue Number:	102.03.0006 a,b

Images



This material is presented as originally created; it may contain outdated cultural descriptions and potentially offensive content. [Read more.](#)



Buffet Sideboard

<https://archives.whyte.org/en/permalink/artifact102.03.0009>

Title:	Buffet Sideboard
Date:	1875 – 1900
Material:	wood, mahogany; glass
Dimensions:	166.0 x 63.2 x 156.0 cm
Description:	<p>A mahogany buffet with a surmounted mirror in an Empire frame. This buffet has three top drawers, cupboards, and a long bottom drawer. There are four cupboard doors; two centre doors and two side doors. The cupboards are centered over a long drawer at the bottom of the piece. The buffet has four ball-and-claw feet.</p>
Subject:	<p>households</p> <p>furniture</p>
Credit:	Gift of Pearl Evelyn Moore, Banff, 1979
Catalogue Number:	102.03.0009

Images



This material is presented as originally created; it may contain outdated cultural descriptions and potentially offensive content. [Read more.](#)



Tea Cart

<https://archives.whyte.org/en/permalink/artifact102.03.0010>

Title:	Tea Cart
Date:	1875 – 1900
Material:	wood, mahogany
Dimensions:	78.5 x 41.5 x 101.5 cm
Description:	Table with an undershelf and fitted with a centre drawer. The wheels of this cart are almost hidden by four claw feet.
Subject:	households furniture
Credit:	Gift of Pearl Evelyn Moore, Banff, 1979
Catalogue Number:	102.03.0010

Images



This material is presented as originally created; it may contain outdated cultural descriptions and potentially offensive content. [Read more.](#)



Occasional Chair

<https://archives.whyte.org/en/permalink/artifact102.03.0015>

Title: Occasional Chair

Date: 1875 – 1900

Material: wood, mahogany; paint; fibre

Dimensions: 82.5 x 54.0 x 50.0 cm

Description: A mahogany occasional chair with a woven rush seat. The back of the chair is gilt decorated mahogany with a back splat that is hand carved and painted.

Subject: households

furniture

crafts

carving

Credit: Gift of Pearl Evelyn Moore, Banff, 1979

Catalogue Number: 102.03.0015

Images



This material is presented as originally created; it may contain outdated cultural descriptions and potentially offensive content. [Read more.](#)



Wall Mirror

<https://archives.whyte.org/en/permalink/artifact102.03.0028>

Title:	Wall Mirror
Date:	1875 – 1900
Material:	glass; wood;
Dimensions:	56.0 x 13.0 x 67.0 cm
Description:	A round wall mirror surrounded by an ornate gilt frame. The frame features two cornucopias, one on each side of the mirror, and an eagle with outspread wings at top.
Subject:	households furniture
Credit:	Gift of Pearl Evelyn Moore, Banff, 1979
Catalogue Number:	102.03.0028

Images



This material is presented as originally created; it may contain outdated cultural descriptions and potentially offensive content. [Read more.](#)



Campaign Chest

<https://archives.whyte.org/en/permalink/artifact102.03.0031>

Title:	Campaign Chest
Date:	1875 – 1910
Material:	wood; metal, brass; skin
Dimensions:	101.5 x 99.0 cm
Description:	A two-piece mahogany inlay campaign chest with six drawers; three small drawers and three long drawers. Between the two small top drawers is a third drawer face that is fitted to pull out as desk with leather writing pad and pigeon holes. The chest has brass pulls and brass plates at each corner.
Subject:	households furniture
Credit:	Gift of Pearl Evelyn Moore, Banff, 1979
Catalogue Number:	102.03.0031

Images



This material is presented as originally created; it may contain outdated cultural descriptions and potentially offensive content. [Read more.](#)



Sofa

<https://archives.whyte.org/en/permalink/artifact102.03.0032>

Title:	Sofa
Date:	1870 – 1900
Material:	wood, mahogany; fibre, silk; metal, brass
Dimensions:	97.0 x 65.0 x 204.0 cm
Description:	Mahogany settee, with rolled arms, on Duncan Phyfe style legs with brass footings. The sofa features carved wood trim. This piece is stuffed with horsehair, has an overpadding of cotton, and is upholstered with corded gold-coloured silk. There are two matching gold-coloured silk upholstered bolsters, one placed at each end of the sofa.
Subject:	households furniture
Credit:	Gift of Pearl Evelyn Moore, Banff, 1979
Catalogue Number:	102.03.0032

Images



This material is presented as originally created; it may contain outdated cultural descriptions and potentially offensive content. [Read more.](#)



Footstool Stool

<https://archives.whyte.org/en/permalink/artifact102.03.0034>

Title:	Footstool Stool
Date:	1870 – 1900
Material:	wood; hair, sheep; fibre
Dimensions:	13.5 x 30.0 x 122.0 cm
Description:	Long footrest, the length of a standard sofa, that sits directly on the floor (it has no legs). One side arcs from the corners of the other, straight, edge and is slightly scalloped. The piece is covered with walnut burl veneer. The centre of the footrest features a large gauge needlepoint design worked in wool on satin upholstery. The needlepoint is a floral design with a red background, white flowers, and green and brown leaves.
Subject:	households furniture crafts needlepoint
Credit:	Gift of Pearl Evelyn Moore, Banff, 1979
Catalogue Number:	102.03.0034

Images



This material is presented as originally created; it may contain outdated cultural descriptions and potentially offensive content. [Read more.](#)



Wall Mirror

<https://archives.whyte.org/en/permalink/artifact102.03.0035>

Title:	Wall Mirror
Date:	1870 – 1900
Material:	wood; glass; paint
Dimensions:	114.0 x 54.4 cm
Description:	A rectangular hanging mirror that is framed in gilt, gold leaf and ebonized wood. The gilt panel at the top of the mirror frame is decorated with foliage and fruit in relief.
Subject:	households furniture
Credit:	Gift of Pearl Evelyn Moore, Banff, 1979
Catalogue Number:	102.03.0035

Images



This material is presented as originally created; it may contain outdated cultural descriptions and potentially offensive content. [Read more.](#)



Blanket Chest

<https://archives.whyte.org/en/permalink/artifact102.03.0037>

Title:	Blanket Chest
Date:	1875 – 1900
Material:	wood, oak; metal, brass
Dimensions:	73.0 x 58.0 x 138.5 cm
Description:	Blanket chest of ornately carved oak with hinged lid and brass lock. The top of the chest is plain wood, the sides are partially carved, and the front is entirely carved (four panels).
Subject:	households furniture
Credit:	Gift of Pearl Evelyn Moore, Banff, 1979
Catalogue Number:	102.03.0037

Images



This material is presented as originally created; it may contain outdated cultural descriptions and potentially offensive content. [Read more.](#)



Fender Accessory, Fireplace

<https://archives.whyte.org/en/permalink/artifact102.03.0040>

Title:	Fender Accessory, Fireplace
Date:	1875 – 1900
Material:	metal, brass
Dimensions:	17.2 x 20.5 x 147.5 cm
Description:	Brass fireplace fender with six brass ornaments supporting fender rod.
Subject:	households furniture
Credit:	Gift of Pearl Evelyn Moore, Banff, 1979
Catalogue Number:	102.03.0040

Images



This material is presented as originally created; it may contain outdated cultural descriptions and potentially offensive content. [Read more.](#)



Dressing Table

<https://archives.whyte.org/en/permalink/artifact102.03.0053>

Title:	Dressing Table
Date:	1875 – 1910
Material:	wood, mahogany; glass; metal, brass
Dimensions:	159.0 x 51.5 x 88.0 cm
Description:	Mahogany dressing table with carved bow front. There are three drawers, two deep side drawers each with a single brass pull, and a shallow centre drawer with two brass pulls. The scallop-shaped mirror swings on brass rings. The table is supported by four legs, two cabriole legs in front, and two squared plain legs in back. There is carving at top of mirror frame, bottom of centre drawer, and where mirror supports join to table top.
Subject:	households furniture
Credit:	Gift of Pearl Evelyn Moore, Banff, 1979
Catalogue Number:	102.03.0053

Images



This material is presented as originally created; it may contain outdated cultural descriptions and potentially offensive content. [Read more.](#)



Candlestand

<https://archives.whyte.org/en/permalink/artifact102.03.0054>

Title:	Candlestand
Date:	1875 – 1910
Material:	wood; metal, brass
Dimensions:	69.0 x 44.0 x 45.0 cm
Description:	Square, tilt-top table on swivel pedestal base, with curved tripod legs. The wood of top and legs is inlaid. The table top can be turned three hundred and sixty degrees. There is a square birdcage under and supporting the table top.
Subject:	households furniture
Credit:	Gift of Pearl Evelyn Moore, Banff, 1979
Catalogue Number:	102.03.0054

Images



This material is presented as originally created; it may contain outdated cultural descriptions and potentially offensive content. [Read more.](#)



Cradle

<https://archives.whyte.org/en/permalink/artifact102.03.0056>

Title:	Cradle
Date:	1870 – 1880
Material:	wood, oak
Dimensions:	45.6 x 41.5 x 104.0 cm
Description:	Plain wooden cradle, higher at head than at foot, with two crescent shaped rockers.
Subject:	households furniture children
Credit:	Gift of Pearl Evelyn Moore, Banff, 1979
Catalogue Number:	102.03.0056

Images



This material is presented as originally created; it may contain outdated cultural descriptions and potentially offensive content. [Read more.](#)