



### Summit of the Rockies and Mt. Field

<https://archives.whyte.org/en/permalink/artifactaij.05.01>

Artist: James Alfred Aitken (1846 – 1897, Scottish)

Title: Summit of the Rockies and Mt. Field

Date: c. 1886

Medium: watercolour on paper

Description: The scene is comprised mainly of a mountain and a lake. The lake takes up approx. 1/2 of the work, and is cropped in the brc by the frame. The blc is the shoreline of the lake. On the right and left side of the piece, just above the lake, the beginning of two treed mountain sides head out of the picture frame. These two slopes frame a clear mountain in the background which is centered in the middle of the piece. They sky is quite cloudy.

Subject: landscape  
Canadian Rockies  
Mt. Field

Credit: Gift of Donald Grace, Saanichton, 1997

Catalogue Number: AiJ.05.01

### Images



This material is presented as originally created; it may contain outdated cultural descriptions and potentially offensive content. [Read more.](#)



## View of Goat Mountain

<https://archives.whyte.org/en/permalink/artifactbes.05.01>

Artist:	Frederic Marlett Bell-Smith, R. C. A. (1846 – 1923, Canadian)
Title:	View of Goat Mountain
Date:	1888
Medium:	watercolour on paper
Dimensions:	40.5 x 30.3 cm
Description:	<p>Colour: blue, green, yellow. Two people in a canoe paddle across the lake in the lower part of the picture. Two shore lines are seen on both sides. Beyond are yellow and green hills rising up to purple mountain One pear is prominent in the distance. Clear blue fills the top. This painting was lent to the Winnipeg Art Gallery in 1975 to be included in the exhibition The Railway: A patron of the Arts in Canada. The exhibition was circulated across the country for two years.</p>
Subject:	<p>landscape, lake, mountain</p> <p>Vermilion Lake ?</p> <p>figure, male</p>
Credit:	Gift of Mr. and Mrs. Norman Tabuteau, Banff, 1966
Catalogue Number:	BeS.05.01

## Images



This material is presented as originally created; it may contain outdated cultural descriptions and potentially offensive content. [Read more.](#)



## Mt. Rundle, Vermilion Lakes, Banff, N.W.T.

<https://archives.whyte.org/en/permalink/artifactbes.05.06>

Artist:	Frederic Marlett Bell-Smith, R. C. A. (1846 – 1923, Canadian)
Title:	Mt. Rundle, Vermilion Lakes, Banff, N.W.T.
Date:	1887
Medium:	watercolour on paper
Dimensions:	33.5 x 48.6 cm
Description:	Mt. Rundle with Vermilion Lakes in foreground. A figure in a canoe is on the shore of the lake in the lower centre of image.
Subject:	landscape Canadian Rockies Mount Rundle Vermilion Lakes activity canoeing
Credit:	Gift of Ted and Judy Mills, Mill Bay, 2005
Catalogue Number:	BeS.05.06

### Images



This material is presented as originally created; it may contain outdated cultural descriptions and potentially offensive content. [Read more.](#)



## Hector Lake, Kicking Horse Pass, BC

<https://archives.whyte.org/en/permalink/artifactbes.05.07>

Artist:	Frederic Marlett Bell-Smith, R. C. A. (1846 – 1923, Canadian)
Title:	Hector Lake, Kicking Horse Pass, BC
Date:	1887
Medium:	watercolour on paper
Dimensions:	32.8 x 48.0 cm
Description:	Mountain landscape with large glassy lake in centre of painting. Abstract foliage and stand of dead trees in foreground at right. Brown treed slopes on opposite shore with large snow-capped mountains in distance. Small white and red buildings on far shore of lake. Title written in bottom left corner. "F.M. Bell-Smith 1887" at bottom right.
Subject:	mountains lake CPR
Credit:	Gift of Mark Cullen, 2021
Catalogue Number:	BeS.05.07

### Images



This material is presented as originally created; it may contain outdated cultural descriptions and potentially offensive content. [Read more.](#)



## Untitled [Emblem]

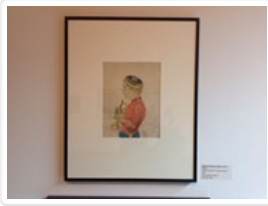
<https://archives.whyte.org/en/permalink/artifactboa.03.01>

Artist:	Takahashi
Title:	Untitled [Emblem]
Date:	1884
Medium:	ink on paper
Dimensions:	18.0 x 32.5 cm
Description:	Centered on the page is a fishing float design. It is circular with a diamond center. On each tip of the diamond is a small circle that joins the larger circle. The inside of the diamond, and the space between the diamond and the circle are shaded with a grey.
Subject:	design fishing float
Credit:	Gift of Catharine Robb Whyte, O. C., Banff, 1979
Catalogue Number:	BoA.03.01

## Images



This material is presented as originally created; it may contain outdated cultural descriptions and potentially offensive content. [Read more.](#)



## Untitled

<https://archives.whyte.org/en/permalink/artifactbrh.05.01>

Artist:	Harry Brett ( – 1925, Canadian)
Title:	Untitled
Date:	1887
Medium:	watercolour on paper
Dimensions:	26 x 19 cm
Description:	General colour: red, yellow, blue. The left profile and torso of a boy dressed in a uniform. Blue pants with a yellow stripe and a red jacket and a blue hat. He holds a trumpet and faces left.
Subject:	NWMP figure male
Credit:	Gift of Mr. and Mrs. Norman Tabuteau, Banff, 1966
Catalogue Number:	BrH.05.01

## Images



This material is presented as originally created; it may contain outdated cultural descriptions and potentially offensive content. [Read more.](#)



## Japanese Woman and Child

<https://archives.whyte.org/en/permalink/artifactbuw.05.01>

Artist:	Watanabe Bunzo (1853 – 1942, Japanese)
Title:	Japanese Woman and Child
Date:	1882
Medium:	ink and colour on paper
Dimensions:	36.1 x 25.2 cm

Description: Frontispiece Japan Day by Day Volume I by Edward S. Morse. A farmyard scene. A woman wearing a grey kimono, blue sash, carries a baby on her back, he is dressed in blue and red and has a small kite in his left hand. She is looking down at a rooster who with a hen behind him are looking at three eggs on the ground. Five figures in background, houses to right centre, a snow-capped mountain is in background, sky is blue with yellowish clouds. Written on back: Mrs. Russell Robb Concord, Mass.

Subject: farmyard  
Mount Fujijama  
buildings  
people

Credit: Gift of Catharine Robb Whyte, O. C., Banff, 1979

Catalogue Number: BuW.05.01

## Images



This material is presented as originally created; it may contain outdated cultural descriptions and potentially offensive content. [Read more.](#)



## Viewing of Chrysanthemums at the Temporary Imperial Palace

<https://archives.whyte.org/en/permalink/artifactchy.04.07%20a-c>

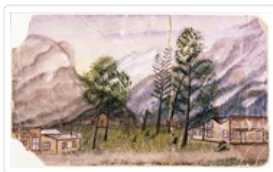
Artist:	Yoshu Chikanobu (1838 – 1912, Japanese)
Title:	Viewing of Chrysanthemums at the Temporary Imperial Palace
Date:	1888
Medium:	woodblock on paper
Dimensions:	37 x 74 cm
Description:	<p>This triptych is a summer scene made up of mostly greens and reds. The three panels all feature groups of women. There is a lake in the background. The first panel contains a group of three women, 2 standing and one crouching, in the foreground. In the background are 3 more women immersed in the flowers. In the top right is a building on an overhang. The second panel features 4 women clustered in front of large flowers. The third panel also contains 4 women. In the bottom right is a gazebo of sorts with flowers all around.</p>
Subject:	<p>group</p> <p>women</p> <p>activity</p> <p>summer</p> <p>flower viewing</p>
Credit:	Gift of Catharine Robb Whyte, O. C., Banff, 1979
Catalogue Number:	ChY.04.07 a-c

### Images



This material is presented as originally created; it may contain outdated cultural descriptions and potentially offensive content. [Read more.](#)



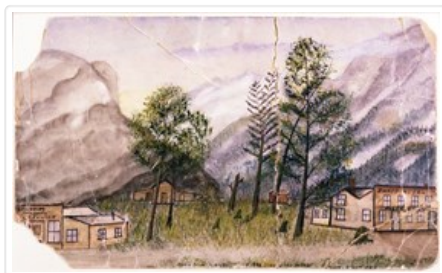


## Part of Old Banff

<https://archives.whyte.org/en/permalink/artifactcid.05.01>

Artist:	D. Clark
Title:	Part of Old Banff
Date:	1888
Medium:	watercolour on heavy paper
Dimensions:	21 x 35.5 cm
Description:	<p>The oldest known painting of the Banff townsite. It shows Stoney Squaw to the left, Cascade to the right with Brewster in background. A false fronted building in left foreground has Groceries, dry goods, L.C. Fulmer written on front, bigger building to the right foreground Banff Hotel, Keefe, ?????. A log structure to centre left, a small red building centre right, five trees in centre, numerous stumps. The grass and trees are green. Along the bottom of the picture is inscribed: Part of original Banff Siding 29? 1888 Cascade Mtn 8K - D Clark, Agent CPR. Siding 29 was established in 1883 at the base of Cascade Mtn. The CPR moved the station to its current Banff location in 1889 and by 1897 all the residents of the old town had moved to the new town of Banff. Eleanor Luxton, Banff Canada's First National Park... pg. 68</p>
Subject:	landscape Banff
Credit:	Gift of Catharine Robb Whyte, O. C., Banff, 1974
Catalogue Number:	CiD.05.01

## Images



This material is presented as originally created; it may contain outdated cultural descriptions and potentially offensive content. [Read more.](#)



## Rusty Disk

<https://archives.whyte.org/en/permalink/artifactcoj.03.071>

Artist:	Charles John Collings (1848 – 1931, British)
Title:	Rusty Disk
Date:	c. 1885
Medium:	graphite on paper board
Dimensions:	25 x 30 cm
Description:	Drawing of a farming disc, the first few discs are show as the disappear into the piece, and the seat sits high up on the piece. "An unlikely combination of practical entrepreneur and preoccupied artist, Collings was involved with farm machinery sales between 1882 and 1888 in England. A writer who interviewed the artist in 1924 had the impression that Collings envisaged farm equipment as means for creating an enormous painting-like but three-dimensional "landscape." -- "Charles John Collings, 1848-1931" Catalogue Raisonne by Linda Heath
Subject:	landscape machinery machine green rims circulars
Credit:	Gift of John Rivette, Seymour Arm, 1982
Catalogue Number:	CoJ.03.071

## Images



This material is presented as originally created; it may contain outdated cultural descriptions and potentially offensive content. [Read more.](#)



## Melora

<https://archives.whyte.org/en/permalink/artifactcoj.03.097>

Artist:	Charles John Collings (1848 – 1931, British)
Title:	Melora
Date:	c. 1890
Medium:	graphite on paper
Dimensions:	25 x 18 cm
Description:	Profile portrait of the bust of a woman with her head gazing downwards. "The woman's head is bowed as though she is preoccupied with something in front of her; perhaps it is the artist's wife, Mellora, playing the piano. The woman's eyes and mouth, and tendrils of hair at the nape are treated sensitively while flowers in the background underscore her femininity." -- "Charles John Collings, 1848-1931" Catalogue Raisonne by Linda Heath
Subject:	portrait Mellora Collings
Credit:	Gift of John Rivette, Seymour Arm, 1984
Catalogue Number:	CoJ.03.097

## Images



This material is presented as originally created; it may contain outdated cultural descriptions and potentially offensive content. [Read more.](#)



## Sailing Ships from Dartmouth

<https://archives.whyte.org/en/permalink/artifactcoj.03.273>

Artist: Charles John Collings (1848 – 1931, British)  
Title: Sailing Ships from Dartmouth  
Date: c. 1890  
Medium: graphite on paper  
Dimensions: 26 x 20 cm  
Subject: landscape  
Credit: Gift of John Rivette, Seymour Arm, 1997  
Catalogue Number: CoJ.03.273

### Images



This material is presented as originally created; it may contain outdated cultural descriptions and potentially offensive content. [Read more.](#)



## Sailboat on River

<https://archives.whyte.org/en/permalink/artifactcoj.03.286>

Artist: Charles John Collings (1848 – 1931, British)  
Title: Sailboat on River  
Date: c. 1885  
Medium: graphite on paper  
Dimensions: 16 x 20 cm  
Subject: landscape  
Credit: Gift of John Rivette, Seymour Arm, 1997  
Catalogue Number: CoJ.03.286

### Images



This material is presented as originally created; it may contain outdated cultural descriptions and potentially offensive content. [Read more.](#)

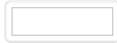


## Two-Masted Sailboat

<https://archives.whyte.org/en/permalink/artifactcoj.03.287>

Artist: Charles John Collings (1848 – 1931, British)  
Title: Two-Masted Sailboat  
Date: c. 1885  
Medium: graphite on paper  
Dimensions: 12.5 x 19 cm  
Subject: landscape  
Credit: Gift of John Rivette, Seymour Arm, 1997  
Catalogue Number: CoJ.03.287

### Images



This material is presented as originally created; it may contain outdated cultural descriptions and potentially offensive content. [Read more.](#)

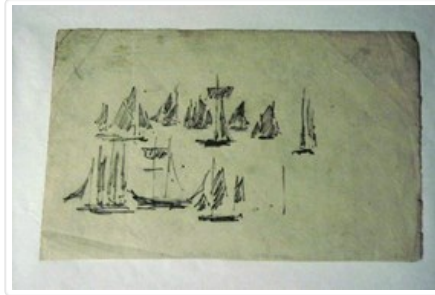


## Small Sketches of Sailboats

<https://archives.whyte.org/en/permalink/artifactcoj.03.288>

Artist: Charles John Collings (1848 – 1931, British)  
Title: Small Sketches of Sailboats  
Date: c. 1885  
Medium: ink on paper  
Dimensions: 12.5 x 19 cm  
Subject: landscape  
Credit: Gift of John Rivette, Seymour Arm, 1997  
Catalogue Number: CoJ.03.288

### Images



This material is presented as originally created; it may contain outdated cultural descriptions and potentially offensive content. [Read more.](#)



## Boats in Harbour

<https://archives.whyte.org/en/permalink/artifactcoj.03.289>

Artist: Charles John Collings (1848 – 1931, British)  
Title: Boats in Harbour  
Date: c. 1885  
Medium: graphite on paper  
Dimensions: 8 x 19 cm  
Subject: landscape  
Credit: Gift of John Rivette, Seymour Arm, 1997  
Catalogue Number: CoJ.03.289

### Images



This material is presented as originally created; it may contain outdated cultural descriptions and potentially offensive content. [Read more.](#)





## Workboat

<https://archives.whyte.org/en/permalink/artifactcoj.03.290>

Artist: Charles John Collings (1848 – 1931, British)  
Title: Workboat  
Date: c. 1885  
Medium: graphite on paper  
Dimensions: 8 x 19 cm  
Subject: landscape  
Credit: Gift of John Rivette, Seymour Arm, 1997  
Catalogue Number: CoJ.03.290

## Images



This material is presented as originally created; it may contain outdated cultural descriptions and potentially offensive content. [Read more.](#)



## Sailing Barge

<https://archives.whyte.org/en/permalink/artifactcoj.03.291>

Artist: Charles John Collings (1848 – 1931, British)  
Title: Sailing Barge  
Date: c. 1885  
Medium: graphite on board  
Dimensions: 19 x 28 cm  
Subject: landscape  
Credit: Gift of John Rivette, Seymour Arm, 1997  
Catalogue Number: CoJ.03.291

### Images



This material is presented as originally created; it may contain outdated cultural descriptions and potentially offensive content. [Read more.](#)



## Cider Pound

<https://archives.whyte.org/en/permalink/artifactcoj.03.292>

Artist: Charles John Collings (1848 – 1931, British)

Title: Cider Pound

Date: c. 1890

Medium: graphite on paper

Dimensions: 26 x 20 cm

Description: A series of ten drawings, two of which join together to form one large. All drawings relate together in that they are all on the same place and action of men at work. Originally they were in a folded piece of cardboard entitled Cider Pound.

Subject: men

Credit: Gift of John Rivette, Seymour Arm, 1997

Catalogue Number: CoJ.03.292

## Images



This material is presented as originally created; it may contain outdated cultural descriptions and potentially offensive content. [Read more.](#)



## Man Carrying Barrel

<https://archives.whyte.org/en/permalink/artifactcoj.03.293>

Artist: Charles John Collings (1848 – 1931, British)

Title: Man Carrying Barrel

Date: c. 1890

Medium: graphite on paper

Dimensions: 26 x 20 cm

Description: A series of ten drawings, two of which join together to form one large. All drawings relate together in that they are all on the same place and action of men at work. Originally they were in a folded piece of cardboard entitled Cider Pound.

Subject: men

Credit: Gift of John Rivette, Seymour Arm, 1997

Catalogue Number: CoJ.03.293

### Images



This material is presented as originally created; it may contain outdated cultural descriptions and potentially offensive content. [Read more.](#)