



[Hunting party preparing to depart from Banff Indian Grounds or Brewster Corrals, Banff]

<https://archives.whyte.org/en/permalink/descriptions49289>

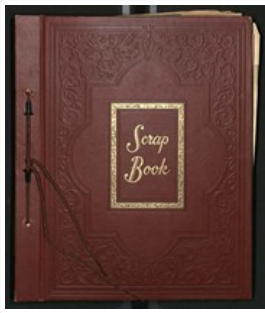
Part Of:	Pat Brewster fonds
Description Level:	6 / Item
Fonds Number:	M2 / V91 / S21
Sous-Fonds:	V91
Reference Code:	v91 / 12 / a / na66 - 1716
GMD:	Photograph Negative, copy Photograph, print
Date Range:	1850-1910
Physical Description:	1 photograph : negative : copy negative
Scope & Content:	Image of five people on horseback with five pack horses
Subject Access:	Discovery and Exploration Environment and Nature Sports and Recreation Transportation
Geographic Access:	Alberta British Columbia
Title Source:	Title based on contents of file
Processing Status:	Processed

Images



OrderRemove

This material is presented as originally created; it may contain outdated cultural descriptions and potentially offensive content. [Read more.](#)



Scrapbook

<https://archives.whyte.org/en/permalink/descriptions6358>

Part Of: Alpine Club of Canada fonds
Description Level: 5 / File
Fonds Number: M200 / S6 / V14
Series: IV.A. Other material: textual
Sous-Fonds: AC 148M
Accession Number: .
Reference Code: M200 / AC 148M / 1
GMD: Scrapbook
Date Range: 1850-1952
Physical Description: 2.5 cm of textual material (42 pages ; 30.5 x 25.5 cm)

History /

Biographical:

See fonds level description.

Scope & Content:

File consists of a scrapbook pertaining primarily to the Calgary Stampede and the Banff Indian Days. Contains newspaper clippings, photographs, and leaflets.

Also includes newspaper clippings pertaining to Mt. Assiniboine, Timber Carnivals, and other ACC-affiliated events.

Name Access: Alpine Club of Canada

Subject Access: Banff Indian Days
Banff Indian Grounds
Calgary Stampede
Rodeo
Festival
Winter Carnival
Ranching
Winter sports

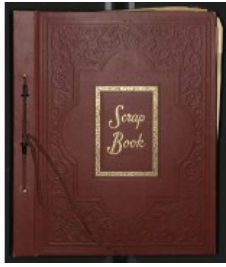
Geographic Access: Banff
Lake Louise
Mount Assiniboine
Mount Assiniboine Park
Calgary
Alberta
British Columbia
Canada

Language: English

Title Source: Title based on material

Processing Status: Processed

Electronic Resources

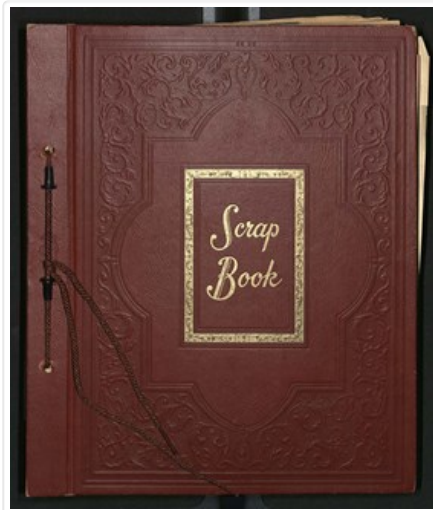


m200_ac_148m_1_pdf.
pdf

 Read PDF

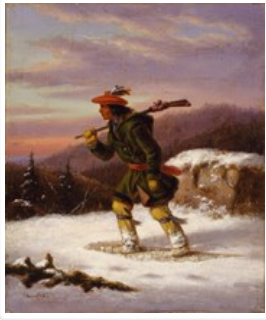
 Download PDF

Images



OrderRemove

This material is presented as originally created; it may contain outdated cultural descriptions and potentially offensive content. [Read more.](#)



Tracking the Moose

<https://archives.whyte.org/en/permalink/artifactkrc.02.02>

Artist:	Cornelius David Krieghoff (1815 – 1872, Canadian)
Title:	Tracking the Moose
Date:	prior to 1878
Medium:	oil on canvas
Dimensions:	21.9 x 26.1 cm
Description:	General colour: grey, green, blue, pink. A figure wearing snow shoes, a green coat with a red sash and a red tam with feathers in it, carries a rifle over his right shoulder and trudges to the left. Behind to the right is a snow covered rock. To the left are trees. Grey clouds in a pink and blue sky come down to meet a distant hill.
Subject:	figure, male winter hunting
Credit:	Gift of Catharine Robb Whyte, O. C., Banff, 1971
Catalogue Number:	KrC.02.02

Images



This material is presented as originally created; it may contain outdated cultural descriptions and potentially offensive content. [Read more.](#)



Moccasin Seller

<https://archives.whyte.org/en/permalink/artifactkrc.02.01>

Artist:	Cornelius David Krieghoff (1815 – 1872, Canadian)
Title:	Moccasin Seller
Date:	prior to 1878
Medium:	oil on canvas
Dimensions:	26.3 x 21.8 cm
Description:	<p>General colour: grey. A heavily cloaked figure wearing snow shoes and carrying a basket on her back from her forehead and with mocassins clasped in her right hand, trudges to the right in front of chunks of snow covered ice. In the distance on the left is an embankment with a flag flying at the top. The sky is grey with a patch of blue in the upper left area.</p>
Subject:	<p>figure, female</p> <p>winter</p>
Credit:	Gift of Catharine Robb Whyte, O. C., Banff, 1971
Catalogue Number:	KrC.02.01

Images



This material is presented as originally created; it may contain outdated cultural descriptions and potentially offensive content. [Read more.](#)



Twelve Symphonies

<https://archives.whyte.org/en/permalink/artifactyou.04.01%20a-c>

Artist: Utagawa Yoshitora

Title: Twelve Symphonies

Date: 1853

Medium: woodblock on paper

Dimensions: 37.5 x 73.5 cm

Description: This print features 9 woman and 1 man playing musical instruments in a room with a green floor, yellow walls, and a large window which spans through all the panels. Through the window a tree with blossoms can be noticed. Lamps and dishes of goodies are lain about. The first panel contains three woman kneeling on the floor facing the right. The woman in the blc is playing a drum. Between the first and second panel spans a colourful gong type instrument on a black stand. In the second panel kneel three people (2 women and one man) The man is playing a flute. The third panel has three women: one playing a long stringed instrument.

Subject: figures
group
women
man
activity
musical gathering

Credit: Gift of Catharine Robb Whyte, O. C., Banff, 1979

Catalogue Number: YoU.04.01 a-c

Images



This material is presented as originally created; it may contain outdated cultural descriptions and potentially offensive content. [Read more.](#)



Bonnet

<https://archives.whyte.org/en/permalink/artifact103.04.1021>

Title:	Bonnet
Date:	1832
Material:	fibre; paper; metal
Description:	Bright green bonnet (calash) with eight folds. Fabric is stitched around shaped metal stays, 14 in all. Neck piece is padded and shaped with wire. Rim has fabric folded or pleated in ribbon effect. Long green ribbon ties at front of neck. Additional long grey ribbon attached to brim higher on face. Inside back is reinforced with burlap on which is glued brown paper. Written in Mary Schaffer's hand: "18 S.M. Potts 1832 Calasche". On back, ribbon is tied in bow. Green fabric stitched on back to cover neck.
Subject:	clothing S.M. Potts Mary Schaffer
Credit:	Gift of Charles C. Reid, Banff, Alberta, 1986
Catalogue Number:	103.04.1021

Images



This material is presented as originally created; it may contain outdated cultural descriptions and potentially offensive content. [Read more.](#)



Eyeglasses

<https://archives.whyte.org/en/permalink/artifact103.08.1067>

Title:	Eyeglasses
Date:	1850 – 1900
Material:	metal; glass
Description:	Small oval-shaped eyeglasses framed with silver metal. Ear arms are extendable.
Subject:	Mary Schaffer
Credit:	Gift of Charles C. Reid, Banff, Alberta, 1986
Catalogue Number:	103.08.1067

Images



This material is presented as originally created; it may contain outdated cultural descriptions and potentially offensive content. [Read more.](#)



Beaded Belt

<https://archives.whyte.org/en/permalink/artifact103.07.1011>

Title:	Beaded Belt
Date:	1850 – 1940
Material:	skin; glass; fibre
Dimensions:	99.0 x 8.5 cm
Description:	A beaded belt with an orange border and a blue background. The belt has a repeating geometric pattern in red, white, black and orange.
Subject:	Indigenous regalia beadwork
Credit:	Gift of Unknown, 1968
Catalogue Number:	103.07.1011

Images



This material is presented as originally created; it may contain outdated cultural descriptions and potentially offensive content. [Read more.](#)



Fragment

<https://archives.whyte.org/en/permalink/artifact104.04.3001>

Title:	Fragment
Date:	1850 – 1975
Material:	metal
Dimensions:	3.5 x 13.0 x 23.0 cm
Description:	<p>Skeleton of revolver. Handle, hammer and cylinder missing, barrel broken at end. Accompanied by papers, yellow with CRW writing: "Old Navy Cap and Ball Revolver 36 Calibre a 6 shooter Whitney Whitneyville, Conn. 1850 - 1860. Found by Larry, son of Archie Daniels in remians of a cabin in Kananaskis Valley above lakes. Found in 1975." and a white paper with "Dr. Pactos; Thankyou for your trouble. I think it is a Stan Arms Co. .44 made in new York around the 1850s would be interested in how close I came. Again Thanks John M" along with "Whitney, .36 Calibre Navy Cap & Ball 1850-60."</p>
Subject:	households
Credit:	Gift of Catharine Robb Whyte, O. C., Banff, 1979
Catalogue Number:	104.04.3001

Images



This material is presented as originally created; it may contain outdated cultural descriptions and potentially offensive content. [Read more.](#)



Catharine Newbury Robb

<https://archives.whyte.org/en/permalink/descriptions23925>

Part Of: Peter and Catharine Whyte fonds
Description Level: 6 / Item
Fonds Number: M36 / V683 / S37
Series: V683 / IV / A : Robb / Morse Family Personal Series
Sous-Fonds: V683
Accession Number: .
Reference Code: V683 / IV / A / PT - 16
GMD: Photograph
Tintype

Date Range: [ca. 1850 - ca. 1870]

Physical Description: Cased Photograph : 1 b&w ambrotype --

Scope & Content:

Case contains 1 b&w ambrotype. Ambrotype documents an young woman (possibly Catharine Newbury Robb) posed for a portrait.

Subject Access: Portrait

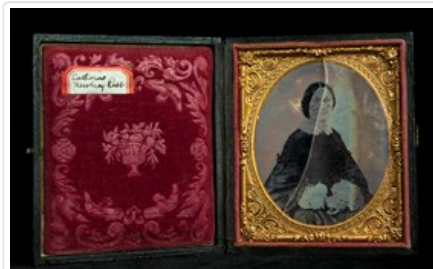
Language: English

Title Source: Title as found on item

Content Details: Ambrotype in case. Case covered with black coated paper. Front and back covers feature architectural and vegetal design in relief. The inside cover features a design debossed in red velvet and an adhesive sticker that reads "Catharine Newbury Robb." The Ambrotype is framed in a brass coloured, decorative metal mat.

Processing Status: Processed

Images



OrderRemove

This material is presented as originally created; it may contain outdated cultural descriptions and potentially offensive content. [Read more.](#)



E.S. Morse

<https://archives.whyte.org/en/permalink/descriptions23927>

Part Of:	Peter and Catharine Whyte fonds
Description Level:	6 / Item
Fonds Number:	M36 / V683 / S37
Series:	V683 / IV / A : Robb / Morse Family Personal Series
Sous-Fonds:	V683
Accession Number:	.
Reference Code:	V683 / IV / A / PT - 21
GMD:	Photograph Tintype
Date Range:	[ca. 1850 - ca. 1870]
Physical Description:	Cased Photograph : 1 b&w ambrotype --
Scope & Content:	Case contains 1 b&w ambrotype. Ambrotype documents a young man posing for a portrait. Possibly E.S. Morse.
Subject Access:	Portrait
Language:	English
Title Source:	Title as found on item
Content Details:	Ambrotype in wooden case. Case covered with black coated paper. Front and back covers feature architectural and vegetal design in relief. The inside cover features a design debossed in red velvet and an adhesive sticker that reads "E.S. Morse." The Ambrotype is framed in a brass coloured, decorative metal mat
Processing Status:	Processed

Images



OrderRemove

This material is presented as originally created; it may contain outdated cultural descriptions and potentially offensive content. [Read more.](#)

Drawing Album

<https://archives.whyte.org/en/permalink/artifactpos.09.01>



Artist:	Serena Matilda Potts (1812 – 1898, American)
Title:	Drawing Album
Date:	1835
Medium:	pencil; ink; watercolour on paper
Dimensions:	24.5 x 34.5 cm
Description:	<p>A paper album containing artworks done in ink, pencil and watercolour (?). The album is primarily made up of a brown marbled pattern, with red leather (?) or tape (?) on the spine and corners. Inside the front cover on the center of the page, there is an inscription that reads “Serena M. Potts / 1835”. Pages contain artworks of flora and fauna, including birds, butterflies, flowers, plants and landscape scenes, both in colour and in black and white. Some of the drawings share a page with another, while others are one drawing/painting per page.</p>
Subject:	<p>flora</p> <p>fauna</p> <p>bird</p> <p>butterfly</p> <p>plant</p> <p>flower</p> <p>landscape</p> <p>botanical drawings</p> <p>black and white</p> <p>ink</p> <p>graphite</p> <p>drawing</p> <p>painting</p> <p>sketchbook</p>
Credit:	Gift of Charles C. Reid, Banff, Alberta, 1986
Catalogue Number:	PoS.09.01

Images



This material is presented as originally created; it may contain outdated cultural descriptions and potentially offensive content. [Read more.](#)



Pen And Ink Drawing

<https://archives.whyte.org/en/permalink/artifactpom.03.01>

Artist:	Priscilla Morgan Potts (1815 – , American)
Title:	Pen And Ink Drawing
Date:	1830
Medium:	pen and ink; watercolour on paper
Dimensions:	19.0 x 24.0` cm
Description:	Landscape scene with a small, light yellow house in the center, surrounded by leafy trees. In the foreground, 4 animals, likely cattle, are grazing. A river runs through the right hand side, with a large rocky cliff in the far background. The sky is blue, but cloudy. A yellow field is seen to the left, but the rest of the grassy areas are green. Inscription reads "P. M. Potts / W. B. School / 1830". Based on other items in the collection, it can be inferred that this was created during the artist's time at the Washington Boarding School.
Subject:	landscape pastoral building
Credit:	Gift of Charles C. Reid, Banff, Alberta, 1986
Catalogue Number:	PoM.03.01

Images



This material is presented as originally created; it may contain outdated cultural descriptions and potentially offensive content. [Read more.](#)



Watercolour Illustration

<https://archives.whyte.org/en/permalink/artifactpoi.05.01>

Artist:	Emily Potts (1814 – , American)
Title:	Watercolour Illustration
Date:	1830
Medium:	watercolour on paper
Dimensions:	30.5 x 23.0 cm
Description:	Botanical still life drawing of a branch with pink and white flowering blossoms. Could potentially depict peach blossoms.
Subject:	botanical still life flowers tree branch
Credit:	Gift of Charles C. Reid, Banff, Alberta, 1986
Catalogue Number:	Pol.05.01

Images



This material is presented as originally created; it may contain outdated cultural descriptions and potentially offensive content. [Read more.](#)



Watercolour Painting

<https://archives.whyte.org/en/permalink/artifactpos.05.03>

Artist:	Serena Matilda Potts (1812 – 1898, American)
Title:	Watercolour Painting
Date:	1835
Medium:	watercolour on paper
Dimensions:	27.0 x 27.5 cm
Description:	Botanical still life of four different kinds of flowers in an ornate yellow vase, resting on a square, marble-like platform. The flowers are pink, white and blue.
Subject:	botanical still life flowers
Credit:	Gift of Charles C. Reid, Banff, Alberta, 1986
Catalogue Number:	PoS.05.03

Images



This material is presented as originally created; it may contain outdated cultural descriptions and potentially offensive content. [Read more.](#)



Watercolour Painting

<https://archives.whyte.org/en/permalink/artifactpos.05.04>

Artist:	Serena Matilda Potts (1812 – 1898, American)
Title:	Watercolour Painting
Date:	1830
Medium:	watercolour on paper
Dimensions:	24.5 x 25.5 cm
Description:	Botanical still life of two pink flowers, likely roses or peonies. Two flowers are in full bloom, while 4 are still in budding stages. Foliage is mostly a deep green with the edges of some leaves are red.
Subject:	botanical still life flowers
Credit:	Gift of Charles C. Reid, Banff, Alberta, 1986
Catalogue Number:	PoS.05.04

Images



This material is presented as originally created; it may contain outdated cultural descriptions and potentially offensive content. [Read more.](#)



Watercolour Painting

<https://archives.whyte.org/en/permalink/artifactunk.05.27>

Artist:	Unknown
Title:	Watercolour Painting
Date:	1830
Medium:	watercolour on paper
Dimensions:	24.0 x 26.0 cm
Description:	Botanical still life painting of a peach and grapes surrounded by green and orange foliage.
Subject:	botanical still life food fruit
Credit:	Gift of Charles C. Reid, Banff, Alberta, 1986
Catalogue Number:	UnK.05.27

Images



This material is presented as originally created; it may contain outdated cultural descriptions and potentially offensive content. [Read more.](#)



Ejiri, View of Miho, from the series Fifty-three Stations of the Tokaido

<https://archives.whyte.org/en/permalink/artifacthiu.04.01>

Artist:	Utagawa Hiroshige (1797 – 1858, Japanese)
Title:	Ejiri, View of Miho, from the series Fifty-three Stations of the Tokaido
Date:	1834
Medium:	woodblock on paper
Dimensions:	25.9 x 36.4 cm
Description:	Harbour scene, houses in foreground, boats and sailboats in harbour, some out at sea, mountains to the left center. The sky at the horizon is pink, a orange stripe runs along top of picture.
Subject:	landscape lake mountains view of Miho boats
Credit:	Gift of Catharine Robb Whyte, O. C., Banff, 1979
Catalogue Number:	HiU.04.01

Images



This material is presented as originally created; it may contain outdated cultural descriptions and potentially offensive content. [Read more.](#)



Yokkaichi, Mie River, from the Fifty-three Stations of the Tokaido

<https://archives.whyte.org/en/permalink/artifacthiu.04.02>

Artist:	Utagawa Hiroshige (1797 – 1858, Japanese)
Title:	Yokkaichi, Mie River, from the Fifty-three Stations of the Tokaido
Date:	1834
Medium:	woodblock on paper
Dimensions:	25 x 36 cm
Description:	<p>A waterfront scene. A breakwater runs from left bottom corner to the right and off it is a brown plank bridge. A bald-headed man in blue is chasing a yellow hat to the left bottom corner on the breakwater, another person is on the bridge, he has on a yellow coat and light orange hat. A lone bushy branched tree is in centre of picture, a row of reeds runs through centre of picture, some brown topped houses are to left centre. Dark royal blue and green lower part of picture, aqua marine in centre, blue sky line. A stripe of red/brown runs along top of picture.</p>
Subject:	<p>landscape</p> <p>river</p> <p>Mie River</p> <p>figure</p> <p>male</p> <p>activity,running</p>
Credit:	Gift of Catharine Robb Whyte, O. C., Banff, 1979
Catalogue Number:	HiU.04.02

Images



This material is presented as originally created; it may contain outdated cultural descriptions and potentially offensive content. [Read more.](#)



Sudden Shower at Shono, from the Fifty-three Stations of the Tokaido

<https://archives.whyte.org/en/permalink/artifacthiu.04.03>

Artist:	Utagawa Hiroshige (1797 – 1858, Japanese)
Title:	Sudden Shower at Shono, from the Fifty-three Stations of the Tokaido
Date:	1834
Medium:	woodblock on paper
Dimensions:	25 x 36 cm
Description:	A steep green hill runs from bottom right to centre left, three men, two carrying a sedan chair with a person inside are going uphill, the three have hats, the leader has a yellow cape and a yellow cover is over the chair. Two people, one with a yellow cape the other with a yellow umbrella are going downhill. Rooftops in right foreground. Silhouettes of trees, three rows, go from top right to centre left. More trees in immediate foreground.
Subject:	landscape Shono figure group activity walking rain
Credit:	Gift of Catharine Robb Whyte, O. C., Banff, 1979
Catalogue Number:	HiU.04.03

Images



This material is presented as originally created; it may contain outdated cultural descriptions and potentially offensive content. [Read more.](#)