



Cabin at Lake O'Hara

<https://archives.whyte.org/en/permalink/artifactabm.02.01>

Artist: Marion Boyd Allen (1862 – 1941, American)

Title: Cabin at Lake O'Hara

Date: 1925

Medium: oil on canvas

Dimensions: 20.2 x 25.6 cm

Description: General colours: brown, green, purple and red. Central image is a log cabin coming out from left side. The front door is framed on either side by colourful hanging clothes and Aivo chairs, one on each side. In the background to the right is another cabin. Behind and above are trees, a patch of grey sky in the upper right corner and a purple mountain face in the upper left. The painting was originally given by the artist, to Syd Graves (who managed Lake O'Hara for many years). It was then given to Bill Brewster, who gave it to Rita Crick, who gave it to the Peter Whyte Gallery.

Subject: architecture
cabin
landscape
Canadian Rockies
Lake O'Hara area

Credit: Gift of Rita Crick, 1978

Catalogue Number: AbM.02.01

Images



This material is presented as originally created; it may contain outdated cultural descriptions and potentially offensive content. [Read more.](#)



Lake Minnewanka and Mount Inglismaldie

<https://archives.whyte.org/en/permalink/artifactbes.02.01>

Artist:	Frederic Marlett Bell-Smith, R. C. A. (1846 – 1923, Canadian)
Title:	Lake Minnewanka and Mount Inglismaldie
Date:	1890
Medium:	oil on canvas
Dimensions:	34.0 x 57.0 cm
Description:	<p>Colour: blue, green. The lower half is a lake with two people in a canoe right of center. A piece of land with evergreens comes out at the right side. The upper half is a mountain range. At the left side in the distance is another range. Above is clear blue sky. This painting was lent to the Winnipeg Art Gallery in 1975 to be included in the exhibition The Railway: A Patron of the Arts in Canada. The exhibition was circulated across the country for two years.</p>
Subject:	<p>landscape</p> <p>lake, mountain</p> <p>Lake Minnewanka</p> <p>Mount Inglismaldie</p> <p>figure, male</p>
Credit:	Purchased from Red River Books, 1968
Catalogue Number:	BeS.02.01

Images



This material is presented as originally created; it may contain outdated cultural descriptions and potentially offensive content. [Read more.](#)



Alberta: Snow and Tar Sands

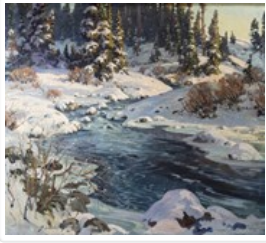
<https://archives.whyte.org/en/permalink/artifactans.02.01>

Artist:	Stephen Andrews (1922 – 1995, Canadian)
Title:	Alberta: Snow and Tar Sands
Date:	1977
Medium:	oil on canvas
Dimensions:	121.5 x 123.0 cm
Description:	Alberta flag emblem and rolling foothills and wheat fields. Opaque white paint drips close to bottom edge of painting.
Subject:	landscape Alberta symbol Alberta provincial emblem
Credit:	Gift of Stephen Andrews, Banff, 1977
Catalogue Number:	AnS.02.01

Images



This material is presented as originally created; it may contain outdated cultural descriptions and potentially offensive content. [Read more.](#)



Baker Creek

<https://archives.whyte.org/en/permalink/artifactbwb.02.01>

Artist:	Belmore Browne (1880 – 1954, American)
Title:	Baker Creek
Date:	c. 1930
Medium:	oil on canvas
Dimensions:	90.2 x 100.2 cm
Description:	General colour: blue, purple, green. Creek is surrounded on all sides by snow covered rocks and shrubs. The water comes down from the upper right of center to the lower center and of right near the bottom. In the lower left corner is a bare branched bush. Across the top is snow covered evergreens. Clear sky and a distant hill in the upper right corner.
Subject:	landscape Canadian Rockies winter Baker Creek
Credit:	Gift of Evelyn Browne, Durham, USA, 1968
Catalogue Number:	BwB.02.01

Images



This material is presented as originally created; it may contain outdated cultural descriptions and potentially offensive content. [Read more.](#)



No-See-Um Creek

<https://archives.whyte.org/en/permalink/artifactbwb.02.02>

Artist:	Belmore Browne (1880 – 1954, American)
Title:	No-See-Um Creek
Date:	c. 1930
Medium:	oil on canvas
Dimensions:	76.5 x 63.5 cm
Description:	General colour: blue. Creek runs diagonally up from lower left corner. Snow covered trees place horizontal line two-thirds up from the bottom. Distant mountains are seen behind trees.
Subject:	landscape mountain winter No-See-Um Creek Rocky Mountains
Credit:	Gift of Evelyn Browne, Durham, USA, 1968
Catalogue Number:	BwB.02.02

Images



This material is presented as originally created; it may contain outdated cultural descriptions and potentially offensive content. [Read more.](#)



Mountain Goats and Mount Assiniboine

<https://archives.whyte.org/en/permalink/artifactbwb.02.06>

Artist:	Belmore Browne (1880 – 1954, American)
Title:	Mountain Goats and Mount Assiniboine
Date:	1941
Medium:	oil on canvas
Dimensions:	45.0 x 59.0 cm
Description:	General colour: blue, green, grey. Two mountain goats look over a cliff at right into misty valley below. A hawk flies in the cloud lower left. In the upper left is a mountain. The peak is up center and is slightly behind a cloud. The sky is bright yellow.
Subject:	landscape Rocky Mountains mountain Mount Assiniboine animal mountain goat
Credit:	Gift of J. Monroe Thorington, Philadelphia, USA, 1973
Catalogue Number:	BwB.02.06

Images



This material is presented as originally created; it may contain outdated cultural descriptions and potentially offensive content. [Read more.](#)



Massive Range

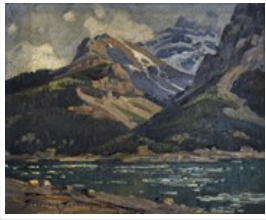
<https://archives.whyte.org/en/permalink/artifactbwb.02.07>

Artist:	Belmore Browne (1880 – 1954, American)
Title:	Massive Range
Date:	1942
Medium:	oil on canvas board
Dimensions:	22.0 x 27.0 cm
Description:	General colour: purple, blue and yellow. Foreground - flowers, grass, a log lies left to center. Poplars with occasional pine, in the distance make a horizon. Three chunks of mountain rise up behind and a grey clouded sky fills the top.
Subject:	landscape Rocky Mountains mountain Massive Range
Credit:	Gift of J. Monroe Thorington, Philadelphia, USA, 1974
Catalogue Number:	BwB.02.07
Notes:	Artistry Revealed: Peter Whyte, Catharine Robb Whyte and Their Contemporaries; June 17, 2018 to October 21, 2018

Images



This material is presented as originally created; it may contain outdated cultural descriptions and potentially offensive content. [Read more.](#)



When the Ice Goes Out

<https://archives.whyte.org/en/permalink/artifactbwb.01.01>

Artist:	Belmore Browne (1880 – 1954, American)
Title:	When the Ice Goes Out
Date:	1929
Medium:	oil on canvas board
Dimensions:	23 x 28 cm
Description:	General colour: green, grey. Rocky point of land comes down to the water from the lower left corner across the lower edge to right center. The green water has chunks of ice floating on it. The far shore of trees, one third up, rises quickly to two mountains. One is to the right the other in the distance at center. The grey sky fills the upper corner.
Subject:	landscape lake mountains Lake Minnewanka Mount Inglismaldie
Credit:	Gift of J. Monroe Thorington, Philadelphia, USA, 1970
Catalogue Number:	BwB.01.01

Images



This material is presented as originally created; it may contain outdated cultural descriptions and potentially offensive content. [Read more.](#)



Bow Glacier

<https://archives.whyte.org/en/permalink/artifactbwb.02.04>

Artist:	Belmore Browne (1880 – 1954, American)
Title:	Bow Glacier
Date:	1928
Medium:	oil on board
Dimensions:	29.0 x 40.0 cm
Description:	Colour: blue, green. The lower half is green grass with evergreens along the shore of the lake which appears at left of center. The upper half is blue and purple and white mountains. Sky goes along the top.
Subject:	landscape mountain Rocky Mountains glacier Bow Glacier
Credit:	Gift of Mary Hallock, Fort St. James, 1981
Catalogue Number:	BwB.02.04
Notes:	Artistry Revealed: Peter Whyte, Catharine Robb Whyte and Their Contemporaries; June 17, 2018 to October 21, 2018

Images



This material is presented as originally created; it may contain outdated cultural descriptions and potentially offensive content. [Read more.](#)



Cascade Mountain 1908

<https://archives.whyte.org/en/permalink/artifactcuj.02.01>

Artist:	John Donaldson Curren (1852 – 1940, Canadian)
Title:	Cascade Mountain 1908
Date:	1908
Medium:	oil on canvas
Dimensions:	35.3 x 43.2 cm
Description:	General colour: green. Across the bottom is grass and then a lake with two boats on it; one in the center and one to the left in the distance. The far shore is one third up and gives way to a mountain. The peak is in the middle near the top. Sky is on both sides.
Subject:	landscape
Credit:	Gift of Catharine Robb Whyte, O. C., Banff, 1974
Catalogue Number:	CuJ.02.01

Images



This material is presented as originally created; it may contain outdated cultural descriptions and potentially offensive content. [Read more.](#)



Devil's Canyon

<https://archives.whyte.org/en/permalink/artifactcuj.02.02>

Artist:	John Donaldson Curren (1852 – 1940, Canadian)
Title:	Devil's Canyon
Date:	n.d.
Medium:	oil on canvas
Dimensions:	49.3 x 59.8 cm
Description:	General colours: green, brown. Rock cliffs with dead tree logs propped up on them, come down to meet a narrow waterway at center. Trees grow on top of the cliffs and a mountain side rises up from them on the right. Two peaks can be seen up center. The sky is blue and pink with a few horizontal clouds across it.
Subject:	landscape
Credit:	Gift of Dave White, Winnipeg, 1969
Catalogue Number:	CuJ.02.02

Images



This material is presented as originally created; it may contain outdated cultural descriptions and potentially offensive content. [Read more.](#)



First Cabin at Lake Louise

<https://archives.whyte.org/en/permalink/artifactcuj.02.03>

Artist:	John Donaldson Curren (1852 – 1940, Canadian)
Title:	First Cabin at Lake Louise
Date:	n.d.
Medium:	oil on canvas
Dimensions:	39.4 x 54.6 cm
Description:	General colour: green, brown. Across the bottom is green water. The rocky beach has a rowboat on it at the left side. It has one oar in it and the name Dave White painted on the side. At center is a small log cabin - logs scattered at the left side of it - smoke coming out the top. The background is trees.
Subject:	architecture, rural cabin landscape Canadian Rockies Lake Louise Dave White
Credit:	Gift of Catharine Robb Whyte, O. C., Banff, 1975
Catalogue Number:	CuJ.02.03

Images



This material is presented as originally created; it may contain outdated cultural descriptions and potentially offensive content. [Read more.](#)



Johnson's Canyon

<https://archives.whyte.org/en/permalink/artifactcuj.02.04>

Artist:	John Donaldson Curren (1852 – 1940, Canadian)
Title:	Johnson's Canyon
Date:	1929
Medium:	oil on canvas
Dimensions:	44.6 x 34.5 cm
Description:	General colour: brown, green. Water runs up from the lower edge to center banked on both sides by steep cliffs. A row of trees grows by the waters edge on the left side. Trees grow on top of the cliffs. Two bridges cross the water at center and in the distance. Above left is cloudy sky.
Subject:	landscape river bridge
Credit:	Gift of Catharine Robb Whyte, O. C., Banff, 1975
Catalogue Number:	CuJ.02.04

Images



This material is presented as originally created; it may contain outdated cultural descriptions and potentially offensive content. [Read more.](#)



Mount Burgess and Emerald Lake

<https://archives.whyte.org/en/permalink/artifactcuj.02.05>

Artist:	John Donaldson Curren (1852 – 1940, Canadian)
Title:	Mount Burgess and Emerald Lake
Date:	1923
Medium:	oil on canvas
Dimensions:	51 x 30.5 cm
Description:	General colour: blue, green. Bottom third is water. The edge of the left shore is in the lower left corner. Tree branches come out from the edge of the left side. Across the middle is the far shore of trees. In the upper part in the center is one mountain and sky beyond.
Subject:	landscape
Credit:	Gift of Catharine Robb Whyte, O. C., Banff, 1974
Catalogue Number:	CuJ.02.05

Images



This material is presented as originally created; it may contain outdated cultural descriptions and potentially offensive content. [Read more.](#)



The Three Sisters

<https://archives.whyte.org/en/permalink/artifactcuj.02.08>

Artist:	John Donaldson Curren (1852 – 1940, Canadian)
Title:	The Three Sisters
Date:	n.d.
Medium:	oil on canvas
Dimensions:	61 x 86.5 cm
Description:	General colour: greens. A mountain range goes off into the distance left. A lake reflecting evergreens and scrub on opposite shore divides the painting horizontally one third up from the bottom.
Subject:	landscape
Credit:	Gift of Catharine Robb Whyte, O. C., Banff, 1974
Catalogue Number:	CuJ.02.08

Images



This material is presented as originally created; it may contain outdated cultural descriptions and potentially offensive content. [Read more.](#)



Mount Rundle

<https://archives.whyte.org/en/permalink/artifactcuj.02.06>

Artist:	John Donaldson Curren (1852 – 1940, Canadian)
Title:	Mount Rundle
Date:	n.d.
Medium:	oil on canvas
Dimensions:	29.8 x 37.9 cm
Description:	General colour: green, blue, brown. The lower half is green water with an island of shrubs sitting in the middle. Bushes and then trees mark the far shore. A blue mountain rises up from center. The blue and pink sky has a few clouds.
Subject:	landscape
Credit:	Gift of D. Armistead Moore, 1971
Catalogue Number:	CuJ.02.06

Images



This material is presented as originally created; it may contain outdated cultural descriptions and potentially offensive content. [Read more.](#)



Mount Rundle in Snow

<https://archives.whyte.org/en/permalink/artifactcuj.02.07>

Artist:	John Donaldson Curren (1852 – 1940, Canadian)
Title:	Mount Rundle in Snow
Date:	n.d.
Medium:	oil on canvas board
Dimensions:	35.5 x 29.2 cm
Description:	General colour: green, white. Green water in the lower part with a patch of snow in lower left corner. Trees rise up on both sides. There is an island of snow in the center of the water. In the background center is a single mountain. Sky above.
Subject:	landscape
Credit:	Gift of Dave White, Winnipeg, 1970
Catalogue Number:	CuJ.02.07

Images



This material is presented as originally created; it may contain outdated cultural descriptions and potentially offensive content. [Read more.](#)



Untitled

<https://archives.whyte.org/en/permalink/artifactcuj.02.09>

Artist: John Donaldson Curren (1852 – 1940, Canadian)

Title: Untitled

Date: n.d.

Medium: oil on canvas

Dimensions: 50.4 x 60.5 cm

Description: General colour: green. Central image is log building with a chair and table sitting outside it. Hotel is written on the door. To the left of the cabin are logs and an axe in a stump. To the right, a fence and a ladder coming out of a hole in the ground. Trees surround the hut and green mountains rise up behind. The sky is blue with small white clouds. Small shrubs grow across the bottom.

Subject: landscape
architecture, rural

Credit: Gift of Dave White, Winnipeg, 1970

Catalogue Number: CuJ.02.09

Images



This material is presented as originally created; it may contain outdated cultural descriptions and potentially offensive content. [Read more.](#)



Untitled

<https://archives.whyte.org/en/permalink/artifactcuj.02.10>

Artist:	John Donaldson Curren (1852 – 1940, Canadian)
Title:	Untitled
Date:	1909
Medium:	oil on canvas
Dimensions:	51.2 x 81.4 cm
Description:	General colour: green. In the lower left corner there is a road and a cabin with a woman in the doorway and smoke coming out of the chimney. The road goes over a bridge over a stream. To the right is a lake with two men on the shore and a sailboat in the center. The hills rise up beyond and mountains behind them. Small clouds drift across the sky.
Subject:	landscape
Credit:	Gift of Catharine Robb Whyte, O. C., Banff, 1974
Catalogue Number:	CuJ.02.10

Images



This material is presented as originally created; it may contain outdated cultural descriptions and potentially offensive content. [Read more.](#)



Untitled

<https://archives.whyte.org/en/permalink/artifactcuj.02.11>

Artist:	John Donaldson Curren (1852 – 1940, Canadian)
Title:	Untitled
Date:	n.d.
Medium:	oil on canvas board
Dimensions:	46.7 x 35.5 cm
Description:	General colour: turquoise, blue, forest green. Lower canvas is water except in the right corner is a brown shore with stones and logs. A cliff rises up the right side topped with trees. In the distance to the left is a treed slope and snowy peak beyond. The sky fills the upper half, it is blue with a pink horizon and clouds.
Subject:	landscape
Credit:	Gift of Catharine Robb Whyte, O. C., Banff, 1974
Catalogue Number:	CuJ.02.11

Images



This material is presented as originally created; it may contain outdated cultural descriptions and potentially offensive content. [Read more.](#)