



### Beaded Purse

<https://archives.whyte.org/en/permalink/artifact103.08.0086>

Title: Beaded Purse

Date: 1835 – 1905

Material: fibre, silk; metal

Dimensions: 37.5 cm

Description: A long narrow netted grey silk evening bag with metallic beads laced in the netting. The beading becomes quite heavy at the bottom. The purse has a beaded tassel and a slit opening in the side with two angular metal rings that slip over the purse and secure its contents. Two Canadian ten cent coins dated 1911 and 1917 were found inside this purse.

Subject: households

social customs

crafts

beadwork

Credit: Gift of Pearl Evelyn Moore, Banff, 1979

Catalogue Number: 103.08.0086

### Images



This material is presented as originally created; it may contain outdated cultural descriptions and potentially offensive content. [Read more.](#)



## Wedge

<https://archives.whyte.org/en/permalink/artifact104.49.0002>

Title:	Wedge
Date:	1830 – 1900
Material:	metal, bronze
Dimensions:	1.4 x 9.5 x 9.5 cm
Description:	A hand forged bronze T-shaped wedge with the thick body curved and edged at the bottom. The wedge has narrow arms and a flat head for driving.
Subject:	households souvenirs tourism
Credit:	Gift of Pearl Evelyn Moore, Banff, 1979
Catalogue Number:	104.49.0002

## Images



This material is presented as originally created; it may contain outdated cultural descriptions and potentially offensive content. [Read more.](#)



## Teakettle

<https://archives.whyte.org/en/permalink/artifact104.19.0064>

Title:	Teakettle
Date:	1830 – 1900
Material:	metal
Dimensions:	23.0 x 14.5 x 26.5 cm
Description:	Flat based, deep oval teakettle with straight sides which at top slope inwards and up to oval brass rimmed opening into which rounded copper lid with brass knob fits. Two vertical brass brackets curve up to hold cylindrical, horizontal, hollow copper handle. Long curved spout on one end. Stamped on bottom a cross hatched pattern with letter "B" within circle, possibly an "R" as well. Stamped in centre of base is "5". Base dented, bottom is dove-tailed to the body.
Subject:	households kitchen decorative
Credit:	Gift of Catharine Robb Whyte, O. C., Banff, 1979
Catalogue Number:	104.19.0064

## Images



This material is presented as originally created; it may contain outdated cultural descriptions and potentially offensive content. [Read more.](#)



## Sake Bottle

<https://archives.whyte.org/en/permalink/artifact104.20.0241>

Title:	Sake Bottle
Date:	1830 – 1880
Material:	ceramic
Dimensions:	14.7 x 6.5 cm
Description:	Beige ground with gold birds over waves and top and bottom border designs, circular flat foot, glaze is crazed, small indention for pouring, 2 cm. neck containing 3 small chips.
Subject:	households Edward S. Morse Edith Morse Robb Satsuma
Credit:	Gift of Catharine Robb Whyte, O. C., Banff, 1979
Catalogue Number:	104.20.0241

## Images



This material is presented as originally created; it may contain outdated cultural descriptions and potentially offensive content. [Read more.](#)



## Teacup

<https://archives.whyte.org/en/permalink/artifact104.20.0280%20a%2cb>

Title:	Teacup
Date:	1835
Material:	ceramic
Dimensions:	4.5 x 6.7 cm
Description:	Two teacups made of porcelain with black, geometric, stenciled design, 2 flowers on outside, trimmed foot. Red and white label on the inside of (b) reads "Yatsushiso 1835 set of 5 Made for Governor"
Subject:	Whyte home households Edith Morse Robb Edward S. Morse
Credit:	Gift of Catharine Robb Whyte, O. C., Banff, 1979
Catalogue Number:	104.20.0280 a,b

## Images



This material is presented as originally created; it may contain outdated cultural descriptions and potentially offensive content. [Read more.](#)



## Medicine Cabinet

<https://archives.whyte.org/en/permalink/artifact102.03.0079>

Title:	Medicine Cabinet
Date:	1830 – 1900
Material:	wood; metal
Dimensions:	23.3 x 8.1 x 32.0 cm
Description:	Traditional Japanese household medicine or spice cabinet, 17 drawers, each affixed with brass pull, arrayed in four rows, five drawers in top row, and four in each of lower three rows.
Subject:	households furnishings
Credit:	Gift of Catharine Robb Whyte, O. C., Banff, 1979
Catalogue Number:	102.03.0079

## Images



This material is presented as originally created; it may contain outdated cultural descriptions and potentially offensive content. [Read more.](#)



## Vase

<https://archives.whyte.org/en/permalink/artifact102.04.0244>

Title:	Vase
Date:	1832 – 1832
Material:	ceramic
Dimensions:	8.9 x 9.0 cm
Description:	Hand thrown, trim-footed, jar with 2.6 cm. diameter neck. Wax resist applied (probably) before glazing, Dominant green calligraphy and miscellaneous objects in design with yellow, red, white, pale green and deep blue trim. Red-bordered label in E.S. Morse's writing says "China, age 1832" and number resembling "707".
Subject:	households decorative Chinese E. S. Morse
Credit:	Gift of Catharine Robb Whyte, O. C., Banff, 1979
Catalogue Number:	102.04.0244

## Images



This material is presented as originally created; it may contain outdated cultural descriptions and potentially offensive content. [Read more.](#)



## Soup Ladle

<https://archives.whyte.org/en/permalink/artifact104.20.0678>

Title:	Soup Ladle
Date:	1830 – 1836
Material:	metal
Dimensions:	5.2 x 9.3 x 35.0 cm
Description:	Deep bowled, long handled sterling silver ladle. Handle widens sharply near tip and curves back. Monogrammed at tip with script "W", on handle back monogrammed in script "Feb'y. 7th 1836". Engraved on back of shaft "Catharine Robb June 30, 1930". Stamped "D.N. Dole", bowl exterior scratched from use.
Subject:	households CRW wedding Edward S. Morse
Credit:	Gift of Catharine Robb Whyte, O. C., Banff, 1979
Catalogue Number:	104.20.0678

## Images



This material is presented as originally created; it may contain outdated cultural descriptions and potentially offensive content. [Read more.](#)





## Teaspoon Spoon Collection

<https://archives.whyte.org/en/permalink/artifact104.20.0694%20a-c>

Title:	Teaspoon Spoon Collection
Date:	1830 – 1930
Material:	metal
Dimensions:	1.3 x 3.1 x 15.8 cm
Description:	Sterling silver teaspoons. (a) plain design with indentation on shaft, which widens to rounded tip, worn, ornate "M" monogrammed on topside handle, "Hastings" stamped on underside. (b) has bent and dented bowl, slender shaft which widens to rounded tip. Topside handle decorated with butterfly and oval in which "S/L.S" engraved. Underside stamped with "W...?" hallmark. (c) is plain design with slender shaft and diamond - shaped handle tip (lozenge shaped). Stamped on underside handle is script "D" "Sterling, J.A. Merrill & Co." and monogrammed "Deeds from Petro".
Subject:	households kitchen Sargent Petro
Credit:	Gift of Catharine Robb Whyte, O. C., Banff, 1979
Catalogue Number:	104.20.0694 a-c

### Images



This material is presented as originally created; it may contain outdated cultural descriptions and potentially offensive content. [Read more.](#)



## Child's Undergarment

<https://archives.whyte.org/en/permalink/artifact103.06.1002>

Title:	Child's Undergarment
Date:	1830 – 1900
Material:	fibre
Dimensions:	14.0 x 70.0 cm
Description:	Fine cotton, handsewn, undersleeve, a long piece of hemmed fabric with armholes, a triangular piece has a 2.0 cm gathered hem, has a buttonloop at point of triangle to attach to a tiny covered embroidered button at the shoulder
Subject:	household clothing Serena Potts: Mary Schaffer Warren
Credit:	Gift of Charles C. Reid, Banff, Alberta, 1986
Catalogue Number:	103.06.1002

## Images



This material is presented as originally created; it may contain outdated cultural descriptions and potentially offensive content. [Read more.](#)

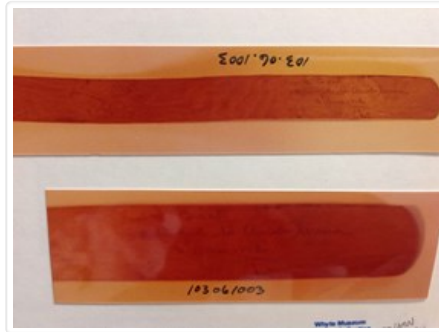


## Corset Stay

<https://archives.whyte.org/en/permalink/artifact103.06.1003>

Title:	Corset Stay
Date:	1830 – 1880
Material:	wood
Dimensions:	3.3 x 35.0 cm
Description:	Wooden corset stay, Serena Potts', shaped with rounded ends, .2 thick piece of wood
Subject:	household clothing characters
	Serena Potts: Mary Schaffer Warren
Credit:	Gift of Charles C. Reid, Banff, Alberta, 1986
Catalogue Number:	103.06.1003

## Images



This material is presented as originally created; it may contain outdated cultural descriptions and potentially offensive content. [Read more.](#)



## Evening Purse

<https://archives.whyte.org/en/permalink/artifact103.08.1102>

Title:	Evening Purse
Date:	1830 – 1850
Material:	fibre; metal; skin
Dimensions:	8.0 x 12.0 cm
Description:	A small dainty crocheted purse. It is attached to a beautifully made metal clasp with scroll work on each end, "S. M. Potts engraved". The lining is leather, writing "S. M. Potts" and something else illegible.
Subject:	households accessories needlework Mary Schaffer S. M. Potts
Credit:	Gift of Charles C. Reid, Banff, Alberta, 1986
Catalogue Number:	103.08.1102

## Images



This material is presented as originally created; it may contain outdated cultural descriptions and potentially offensive content. [Read more.](#)



## Mittens

<https://archives.whyte.org/en/permalink/artifact103.07.1032%20a%2cb>

Title:	Mittens
Date:	1830 – 1880
Material:	hair, sheep
Description:	A pair brown of wool mittens, large hand-knitted, has loops on inside to provide extra wool as insulation, knitted on 4 needles in continuous rounds.
Subject:	households clothing winter Mary Schaffer Warren
Credit:	Gift of Charles C. Reid, Banff, Alberta, 1986
Catalogue Number:	103.07.1032 a,b

## Images



This material is presented as originally created; it may contain outdated cultural descriptions and potentially offensive content. [Read more.](#)



## Drawing Album

<https://archives.whyte.org/en/permalink/artifactpos.09.01>

Artist:	Serena Matilda Potts (1812 – 1898, American)
Title:	Drawing Album
Date:	1835
Medium:	pencil; ink; watercolour on paper
Dimensions:	24.5 x 34.5 cm

Description:	A paper album containing artworks done in ink, pencil and watercolour (?). The album is primarily made up of a brown marbled pattern, with red leather (?) or tape (?) on the spine and corners. Inside the front cover on the center of the page, there is an inscription that reads "Serena M. Potts / 1835". Pages contain artworks of flora and fauna, including birds, butterflies, flowers, plants and landscape scenes, both in colour and in black and white. Some of the drawings share a page with another, while others are one drawing/painting per page.
Subject:	flora fauna bird butterfly plant flower landscape botanical drawings black and white ink graphite drawing painting sketchbook
Credit:	Gift of Charles C. Reid, Banff, Alberta, 1986
Catalogue Number:	PoS.09.01

## Images



This material is presented as originally created; it may contain outdated cultural descriptions and potentially offensive content. [Read more.](#)



## Pen And Ink Drawing

<https://archives.whyte.org/en/permalink/artifactpom.03.01>

Artist:	Priscilla Morgan Potts (1815 – , American)
Title:	Pen And Ink Drawing
Date:	1830
Medium:	pen and ink; watercolour on paper
Dimensions:	19.0 x 24.0` cm
Description:	<p>Landscape scene with a small, light yellow house in the center, surrounded by leafy trees. In the foreground, 4 animals, likely cattle, are grazing. A river runs through the right hand side, with a large rocky cliff in the far background. The sky is blue, but cloudy. A yellow field is seen to the left, but the rest of the grassy areas are green. Inscription reads "P. M. Potts / W. B. School / 1830". Based on other items in the collection, it can be inferred that this was created during the artist's time at the Washington Boarding School.</p>
Subject:	<p>landscape</p> <p>pastoral</p> <p>building</p>
Credit:	Gift of Charles C. Reid, Banff, Alberta, 1986
Catalogue Number:	PoM.03.01

## Images



This material is presented as originally created; it may contain outdated cultural descriptions and potentially offensive content. [Read more.](#)



## Watercolour Illustration

<https://archives.whyte.org/en/permalink/artifactpoi.05.01>

Artist:	Emily Potts (1814 – , American)
Title:	Watercolour Illustration
Date:	1830
Medium:	watercolour on paper
Dimensions:	30.5 x 23.0 cm
Description:	Botanical still life drawing of a branch with pink and white flowering blossoms. Could potentially depict peach blossoms.
Subject:	botanical still life flowers tree branch
Credit:	Gift of Charles C. Reid, Banff, Alberta, 1986
Catalogue Number:	Pol.05.01

## Images



This material is presented as originally created; it may contain outdated cultural descriptions and potentially offensive content. [Read more.](#)





## Watercolour Painting

<https://archives.whyte.org/en/permalink/artifactpos.05.03>

Artist:	Serena Matilda Potts (1812 – 1898, American)
Title:	Watercolour Painting
Date:	1835
Medium:	watercolour on paper
Dimensions:	27.0 x 27.5 cm
Description:	Botanical still life of four different kinds of flowers in an ornate yellow vase, resting on a square, marble-like platform. The flowers are pink, white and blue.
Subject:	botanical still life flowers
Credit:	Gift of Charles C. Reid, Banff, Alberta, 1986
Catalogue Number:	PoS.05.03

## Images



This material is presented as originally created; it may contain outdated cultural descriptions and potentially offensive content. [Read more.](#)



## Watercolour Painting

<https://archives.whyte.org/en/permalink/artifactpos.05.04>

Artist:	Serena Matilda Potts (1812 – 1898, American)
Title:	Watercolour Painting
Date:	1830
Medium:	watercolour on paper
Dimensions:	24.5 x 25.5 cm
Description:	Botanical still life of two pink flowers, likely roses or peonies. Two flowers are in full bloom, while 4 are still in budding stages. Foliage is mostly a deep green with the edges of some leaves are red.
Subject:	botanical still life flowers
Credit:	Gift of Charles C. Reid, Banff, Alberta, 1986
Catalogue Number:	PoS.05.04

## Images



This material is presented as originally created; it may contain outdated cultural descriptions and potentially offensive content. [Read more.](#)



## Watercolour Painting

<https://archives.whyte.org/en/permalink/artifactunk.05.27>

Artist:	Unknown
Title:	Watercolour Painting
Date:	1830
Medium:	watercolour on paper
Dimensions:	24.0 x 26.0 cm
Description:	Botanical still life painting of a peach and grapes surrounded by green and orange foliage.
Subject:	botanical still life food fruit
Credit:	Gift of Charles C. Reid, Banff, Alberta, 1986
Catalogue Number:	UnK.05.27

## Images



This material is presented as originally created; it may contain outdated cultural descriptions and potentially offensive content. [Read more.](#)



## Ejiri, View of Miho, from the series Fifty-three Stations of the Tokaido

<https://archives.whyte.org/en/permalink/artifacthiu.04.01>

Artist:	Utagawa Hiroshige (1797 – 1858, Japanese)
Title:	Ejiri, View of Miho, from the series Fifty-three Stations of the Tokaido
Date:	1834
Medium:	woodblock on paper
Dimensions:	25.9 x 36.4 cm
Description:	Harbour scene, houses in foreground, boats and sailboats in harbour, some out at sea, mountains to the left center. The sky at the horizon is pink, a orange stripe runs along top of picture.
Subject:	landscape lake mountains view of Miho boats
Credit:	Gift of Catharine Robb Whyte, O. C., Banff, 1979
Catalogue Number:	HiU.04.01

### Images



This material is presented as originally created; it may contain outdated cultural descriptions and potentially offensive content. [Read more.](#)