



### Vase

<https://archives.whyte.org/en/permalink/artifact102.04.1002>

Title:	Vase
Date:	1890 – 1910
Material:	ceramic
Dimensions:	14.7 x 8.7 cm
Description:	Ex Banff Sanitarium, drainage holes in base, white china, wide red-purple band outlined with gold lines, stamped brown "Banff Sanitarium" crest (belt forming oval shape) on front, 5 cm drainage holes in base, very simple shape, lip gently flaring from wide neck and slightly bulbous belly, gold line around foot and lip
Subject:	Banff Sanitarium
	Dr. Brett
Credit:	Gift of Mr. and Mrs. Norman Tabuteau, Banff, 1966
Catalogue Number:	102.04.1002

### Images



This material is presented as originally created; it may contain outdated cultural descriptions and potentially offensive content. [Read more.](#)



## Vase

<https://archives.whyte.org/en/permalink/artifact102.04.1008>

Title: Vase

Date: 1890 – 1910

Material: ceramic

Dimensions: 12.2 cm

Description: white and green, ex Banff Sanitarium Hotel, white, band of sunflowers and waterlilies against scalloped green background, "Sanitarium Hotel/Banff" written in crest (belt in oval shape stamped on shoulder above band, small simple shape with slightly ribbed sides and high shoulders closing in to wide mouth and small undulating lip, trademark crest stamped on base noting it is "porcelain opaque"

Subject: institutions

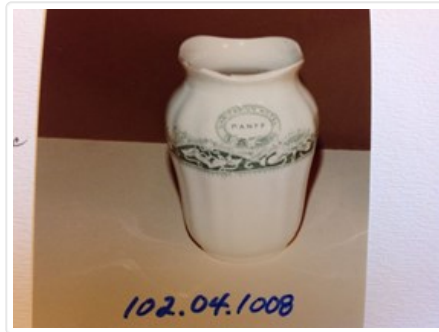
Banff Sanitarium

Dr. Brett

Credit: Gift of Forrest (Pat) Oliver Brewster, Banff, 1966

Catalogue Number: 102.04.1008

## Images



This material is presented as originally created; it may contain outdated cultural descriptions and potentially offensive content. [Read more.](#)



## Vase

<https://archives.whyte.org/en/permalink/artifact102.04.0244>

Title:	Vase
Date:	1832 – 1832
Material:	ceramic
Dimensions:	8.9 x 9.0 cm
Description:	Hand thrown, trim-footed, jar with 2.6 cm. diameter neck. Wax resist applied (probably) before glazing, Dominant green calligraphy and miscellaneous objects in design with yellow, red, white, pale green and deep blue trim. Red-bordered label in E.S. Morse's writing says "China, age 1832" and number resembling "707".
Subject:	households decorative Chinese E. S. Morse
Credit:	Gift of Catharine Robb Whyte, O. C., Banff, 1979
Catalogue Number:	102.04.0244

## Images



This material is presented as originally created; it may contain outdated cultural descriptions and potentially offensive content. [Read more.](#)



## Vase

<https://archives.whyte.org/en/permalink/artifact102.04.0272%20a%2cb>

Title:	Vase
Date:	1890 – 1900
Material:	metal
Dimensions:	11.2 x 9.3 cm
Description:	One large (A) and one small (B) vase, each pear shaped with flared rim and neither having footed base but, rather, a rounded bottom. (A) stamped writing near rim, rim folded over. (B) rim folded over and 6.0 cm. section missing - probably broken off.
Subject:	households decorative
Credit:	Gift of Catharine Robb Whyte, O. C., Banff, 1979
Catalogue Number:	102.04.0272 a,b

## Images



This material is presented as originally created; it may contain outdated cultural descriptions and potentially offensive content. [Read more.](#)



## Vase

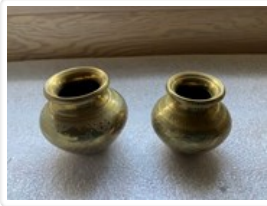
<https://archives.whyte.org/en/permalink/artifact102.04.0273>

Title:	Vase
Date:	1890 – 1900
Material:	metal
Dimensions:	9.5 x 8.5 cm
Description:	Squat, bulbous vases with flared rims. Collared where neck joins body. Seam can be seen on body of (A). Round versus flat bottomed.
Subject:	households decorative
Credit:	Gift of Catharine Robb Whyte, O. C., Banff, 1979
Catalogue Number:	102.04.0273

## Images



This material is presented as originally created; it may contain outdated cultural descriptions and potentially offensive content. [Read more.](#)



## Vase

<https://archives.whyte.org/en/permalink/artifact102.04.0274%20a%2cb>

Title:	Vase
Date:	1890 – 1900
Material:	metal
Dimensions:	7.8 x 8.5 cm
Description:	Urn shaped containers with wide-lipped rims. (A) tooled peacock and flower decoration with other line decoration, orange (B) tooled diagonal diamond and line decoration, ornate.
Subject:	households decorative
Credit:	Gift of Catharine Robb Whyte, O. C., Banff, 1979
Catalogue Number:	102.04.0274 a,b

## Images



This material is presented as originally created; it may contain outdated cultural descriptions and potentially offensive content. [Read more.](#)



## Vase

<https://archives.whyte.org/en/permalink/artifact102.04.0275>

Title: Vase  
Date: 1890 – 1900  
Material: metal  
Dimensions: 10.7 x 10.4 cm  
Description: Bulbous container with wide-lipped rim. Crosshatch and other tooled line decoration throughout exterior. Small areas of copper visible.  
Subject: households  
decorative  
Credit: Gift of Catharine Robb Whyte, O. C., Banff, 1979  
Catalogue Number: 102.04.0275

## Images



This material is presented as originally created; it may contain outdated cultural descriptions and potentially offensive content. [Read more.](#)



## Vase

<https://archives.whyte.org/en/permalink/artifact102.04.0276>

Title:	Vase
Date:	1890 – 1900
Material:	metal
Dimensions:	9.0 x 9.5 cm
Description:	Bulbous container with short neck, flared rim. Seam at centre of body, two decorative lines on shoulder, one line decoration on inside rim.
Subject:	households decorative
Credit:	Gift of Catharine Robb Whyte, O. C., Banff, 1979
Catalogue Number:	102.04.0276

## Images



This material is presented as originally created; it may contain outdated cultural descriptions and potentially offensive content. [Read more.](#)



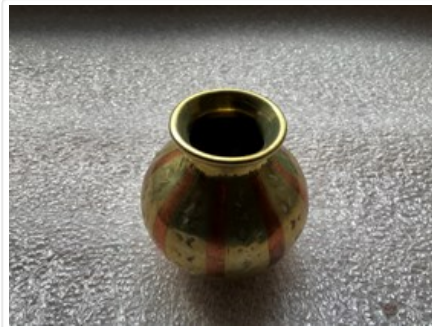


## Vase

<https://archives.whyte.org/en/permalink/artifact102.04.0277>

Title:	Vase
Date:	1890 – 1900
Material:	metal
Dimensions:	5.9 x 6.3 cm
Description:	Bulbous container with flared rim. Copper on base and in alternating panels, line and geometric designs throughout exterior.
Subject:	households decorative
Credit:	Gift of Catharine Robb Whyte, O. C., Banff, 1979
Catalogue Number:	102.04.0277

## Images



This material is presented as originally created; it may contain outdated cultural descriptions and potentially offensive content. [Read more.](#)



## Vase

<https://archives.whyte.org/en/permalink/artifact102.04.0278>

Title:	Vase
Date:	1890 – 1900
Material:	metal
Dimensions:	7.7 x 10.0 cm
Description:	Footed, squat bulbous container with flared rim. Vertical, alternating panel design with leaves, other leaf border trim and line designs.
Subject:	households decorative
Credit:	Gift of Catharine Robb Whyte, O. C., Banff, 1979
Catalogue Number:	102.04.0278

## Images



This material is presented as originally created; it may contain outdated cultural descriptions and potentially offensive content. [Read more.](#)