



Purse

<https://archives.whyte.org/en/permalink/artifact103.08.0039>

Title:	Purse
Date:	1930 – 1950
Material:	fibre, cotton
Dimensions:	14.0 x 31.5 cm
Description:	A pouch shaped black cotton drawstring bag with a single tassel hanging from the bottom edge. The bag is decorated with a wide white cotton band with white flowers that runs horizontally around the centre of the bag and, in turn, is bordered by narrower white bands.
Subject:	households crafts needlework
Credit:	Gift of Pearl Evelyn Moore, Banff, 1979
Catalogue Number:	103.08.0039

Images



This material is presented as originally created; it may contain outdated cultural descriptions and potentially offensive content. [Read more.](#)



Purse

<https://archives.whyte.org/en/permalink/artifact103.08.0040%20a%2cb>

Title:	Purse
Date:	1920 – 1935
Material:	fibre, silk
Dimensions:	2.0 x 7.0 x 7.0 cm
Description:	Two matching small gold silk drawstring purses whose drawstrings are tied together. Each purse has delicate purple and blue flowers embroidered with silk and metallic thread, and two long red silk tassels hanging from the top of either side. Both purses are padded.
Subject:	households crafts needlework
Credit:	Gift of Pearl Evelyn Moore, Banff, 1979
Catalogue Number:	103.08.0040 a,b

Images



This material is presented as originally created; it may contain outdated cultural descriptions and potentially offensive content. [Read more.](#)



Purse

<https://archives.whyte.org/en/permalink/artifact103.08.0044>

Title:	Purse
Date:	1930 – 1950
Material:	fibre, silk
Dimensions:	30.0 x 35.0 cm
Description:	A navy blue square silk bag which attaches to two hoop handles which have been wrapped with navy blue thread. The bag is decorated with a delicate scene of butterflies hovering over flowers and grass blades that has been embroidered with pink, brown, white and green silk thread and embellished with beads.
Subject:	households crafts needlework beadwork
Credit:	Gift of Pearl Evelyn Moore, Banff, 1979
Catalogue Number:	103.08.0044

Images



This material is presented as originally created; it may contain outdated cultural descriptions and potentially offensive content. [Read more.](#)



Purse

<https://archives.whyte.org/en/permalink/artifact103.08.0052>

Title:	Purse
Date:	1930 – 1950
Material:	skin
Dimensions:	9.0 x 8.0 cm
Description:	A small red stained leather purse with a flap that fastens with a leather thong. The bag is finished with a natural leather hand-stitched binding, and decorated with an embossed circular design with blue stained centres.
Subject:	households crafts tooling
Credit:	Gift of Pearl Evelyn Moore, Banff, 1979
Catalogue Number:	103.08.0052

Images



This material is presented as originally created; it may contain outdated cultural descriptions and potentially offensive content. [Read more.](#)



Purse

<https://archives.whyte.org/en/permalink/artifact103.08.0054>

Title:	Purse
Date:	1900 – 1920
Material:	fibre
Dimensions:	14.0 x 24.0 cm
Description:	A crocheted brown cord sack-shaped bag with three horizontal openwork bands. There is a short fringe around the sides, the bottom, and also along the shaped top. The bag is fastened with a button, and has one tassel at the top.
Subject:	households crafts needlework
Credit:	Gift of Pearl Evelyn Moore, Banff, 1979
Catalogue Number:	103.08.0054

Images



This material is presented as originally created; it may contain outdated cultural descriptions and potentially offensive content. [Read more.](#)



Purse

<https://archives.whyte.org/en/permalink/artifact103.08.0057%20a%2cb>

Title:	Purse
Date:	1930 – 1945
Material:	hair, sheep; fibre; wood
Dimensions:	23.5 (a); 6.0 (b) x 27.0 (a); 9.5 (b) cm
Description:	A handbag (a) and matching change purse (b). The navy blue wool handbag has carved wooden handles, a satin lining, and a red and white monogram "P.B.M." worked in cross stitch. The change purse, found inside the purse, is also made of navy blue wool and has a pointed flap.
Subject:	households Pearl Moore crafts needlework
Credit:	Gift of Pearl Evelyn Moore, Banff, 1979
Catalogue Number:	103.08.0057 a,b

Images



This material is presented as originally created; it may contain outdated cultural descriptions and potentially offensive content. [Read more.](#)



Purse

<https://archives.whyte.org/en/permalink/artifact103.08.0058>

Title:	Purse
Date:	1930 – 1950
Material:	fibre, cotton; wood
Dimensions:	38.5 x 41.0 cm
Description:	A white cotton handbag decorated with red and green animals worked in cross stitch. The bag has a wooden frame at the opening, and two short handles of the same material as the bag.
Subject:	households crafts needlework
Credit:	Gift of Pearl Evelyn Moore, Banff, 1979
Catalogue Number:	103.08.0058

Images



This material is presented as originally created; it may contain outdated cultural descriptions and potentially offensive content. [Read more.](#)



Purse

<https://archives.whyte.org/en/permalink/artifact103.08.0060>

Title:	Purse
Date:	1900 – 1930
Material:	fibre, silk
Dimensions:	20.0 x 26.0 cm
Description:	A black silk drawstring bag with a brocaded pink and white floral pattern. The purse, lined with silk, has a silk tassel at each side of the top and closes with a black drawstring.
Subject:	households
Credit:	Gift of Pearl Evelyn Moore, Banff, 1979
Catalogue Number:	103.08.0060

Images



This material is presented as originally created; it may contain outdated cultural descriptions and potentially offensive content. [Read more.](#)



Purse

<https://archives.whyte.org/en/permalink/artifact103.08.0061>

Title:	Purse
Date:	1945 – 1955
Material:	hair, sheep
Dimensions:	18.5 x 14.5 cm
Description:	A flat, rectangular, bag of white and black wool with red vertical zig-zag bands. The bag has three beaded tassels hanging from the bottom edge, and two knitted multicoloured dolls hanging from the bag's long red handle.
Subject:	households crafts beadwork needlework weaving
Credit:	Gift of Pearl Evelyn Moore, Banff, 1979
Catalogue Number:	103.08.0061

Images



This material is presented as originally created; it may contain outdated cultural descriptions and potentially offensive content. [Read more.](#)



Purse

<https://archives.whyte.org/en/permalink/artifact103.08.0062>

Title:	Purse
Date:	1950 – 1960
Material:	hair, sheep
Dimensions:	15.0 x 19.5 cm
Description:	A rectangular, flat, red wool bag with pink, orange, yellow, green and white narrow stripes between three vertical red and white patterned bands. The purse has a green tassel at each of the bottom corners and a pink tassel at the middle of each side and the bottom.
Subject:	households crafts weaving needlework
Credit:	Gift of Pearl Evelyn Moore, Banff, 1979
Catalogue Number:	103.08.0062

Images



This material is presented as originally created; it may contain outdated cultural descriptions and potentially offensive content. [Read more.](#)

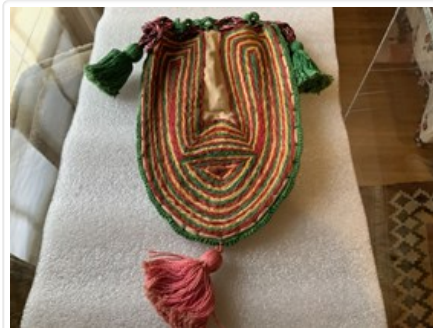


Purse

<https://archives.whyte.org/en/permalink/artifact103.08.0063>

Title:	Purse
Date:	1920 – 1950
Material:	fibre, cotton
Dimensions:	16.0 x 32.0 cm
Description:	A pouch-shaped bag of white cotton with a drawstring at the neck. The bag is decorated with narrow bands of red, green and yellow embroidery following the shape of the bag, and with a pink tassel at the bottom. The bag's drawstring is made of twisted pink and black threads, and has a green tassel at each end.
Subject:	households crafts needlework
Credit:	Gift of Pearl Evelyn Moore, Banff, 1979
Catalogue Number:	103.08.0063

Images



This material is presented as originally created; it may contain outdated cultural descriptions and potentially offensive content. [Read more.](#)



Purse

<https://archives.whyte.org/en/permalink/artifact103.08.0064>

Title:	Purse
Date:	1945 – 1960
Material:	hair, sheep
Dimensions:	20.0 x 28.5 cm
Description:	A square, flat, bag of finely woven white wool with three vertical bands of red, orange and black worked in a simple geometric design. The bag has three tassels hanging from the bottom edge: orange on the left, yellow in the middle, and red on the right.
Subject:	households crafts weaving
Credit:	Gift of Pearl Evelyn Moore, Banff, 1979
Catalogue Number:	103.08.0064

Images



This material is presented as originally created; it may contain outdated cultural descriptions and potentially offensive content. [Read more.](#)



Purse

<https://archives.whyte.org/en/permalink/artifact103.08.0065%20a%2cb>

Title:	Purse
Date:	1910 – 1930
Material:	(a) fibre, cotton; (b) skin
Dimensions:	14.5 (a); 5.0 (b) x 22.5 (a); 7.5 (b) cm
Description:	A purse that has a small change purse inside. The purse (a) is a black polished cotton clutch purse covered with crewel work flowers of vibrant reds, blues, pinks, yellows and white. The purse has a small loop handle. The change purse (b) is a small leather coin purse with a white Scottie dog on the flap.
Subject:	households crafts needlework
Credit:	Gift of Pearl Evelyn Moore, Banff, 1979
Catalogue Number:	103.08.0065 a,b

Images



This material is presented as originally created; it may contain outdated cultural descriptions and potentially offensive content. [Read more.](#)



Purse

<https://archives.whyte.org/en/permalink/artifact103.08.0066>

Title:	Purse
Date:	1945 – 1955
Material:	fibre, plant; fibre, raffia
Description:	A circular handbag formed from two woven disks of natural straw that have been sewn together along the outer edge with green and red raffia. The bag is decorated with groups of red, orange and purple flowers with green leaves, each group spaced evenly around the bag. The bag has a single braided straw handle.
Subject:	households crafts weaving needlework
Credit:	Gift of Pearl Evelyn Moore, Banff, 1979
Catalogue Number:	103.08.0066

Images



This material is presented as originally created; it may contain outdated cultural descriptions and potentially offensive content. [Read more.](#)



Purse

<https://archives.whyte.org/en/permalink/artifact103.08.0067>

Title:	Purse
Date:	1930 – 1955
Material:	fibre
Dimensions:	29.5 x 36.5 cm
Description:	A square, flat, woven straw bag, woven with natural and coloured straw to create a red and green plaid pattern. The bag has a pink velvet twisted wire animal (dog?) with bouquets of artificial flowers near the two small loop handles. Inside is a small woven pouch with a blue tile in it (3.5 cm x 3.6 cm x 1.0 cm).
Subject:	households crafts weaving animals
Credit:	Gift of Pearl Evelyn Moore, Banff, 1979
Catalogue Number:	103.08.0067

Images



This material is presented as originally created; it may contain outdated cultural descriptions and potentially offensive content. [Read more.](#)



Purse

<https://archives.whyte.org/en/permalink/artifact103.08.0068>

Title:	Purse
Date:	1930 – 1940
Material:	fibre
Dimensions:	17.5 x 24.0 cm
Description:	A handbag, with a curved flap and short strap handle, woven in a zig-zig pattern from red and natural-coloured straw. The bag has a very flat, square shape. Inside the purse's strap is "Pandang Sumatra".
Subject:	households souvenirs tourism crafts weaving
Credit:	Gift of Pearl Evelyn Moore, Banff, 1979
Catalogue Number:	103.08.0068

Images



This material is presented as originally created; it may contain outdated cultural descriptions and potentially offensive content. [Read more.](#)



Purse

<https://archives.whyte.org/en/permalink/artifact103.08.0069>

Title:	Purse
Date:	1945 – 1960
Material:	fibre
Dimensions:	21.0 x 37.5 cm
Description:	An envelope style handbag of natural woven straw with a design of green, red and white straw woven in.
Subject:	households crafts weaving
Credit:	Gift of Pearl Evelyn Moore, Banff, 1979
Catalogue Number:	103.08.0069

Images



This material is presented as originally created; it may contain outdated cultural descriptions and potentially offensive content. [Read more.](#)



Purse

<https://archives.whyte.org/en/permalink/artifact103.08.0070>

Title: Purse
Date: 1930 – 1950
Material: fibre
Dimensions: 12.0 x 26.0 cm
Description: An envelope style 'clutch' handbag of woven purple and natural straw.
Subject: households
crafts
weaving
Credit: Gift of Pearl Evelyn Moore, Banff, 1979
Catalogue Number: 103.08.0070

Images



This material is presented as originally created; it may contain outdated cultural descriptions and potentially offensive content. [Read more.](#)



Purse

<https://archives.whyte.org/en/permalink/artifact103.08.0071>

Title:	Purse
Date:	1945 – 1960
Material:	fibre
Dimensions:	19.0 x 35.0 cm
Description:	A two piece handbag made in the envelope style. The purse is made of woven purple straw with a central pattern of red and natural straw, and border pattern of white straw.
Subject:	households crafts weaving
Credit:	Gift of Pearl Evelyn Moore, Banff, 1979
Catalogue Number:	103.08.0071

Images



This material is presented as originally created; it may contain outdated cultural descriptions and potentially offensive content. [Read more.](#)



Purse

<https://archives.whyte.org/en/permalink/artifact103.08.0072>

Title:	Purse
Date:	1930 – 1950
Material:	hair, sheep; fibre, silk
Dimensions:	14.0 x 13.5 cm
Description:	A square beige bag with a diagonal striped pattern of red alternating with black. There are very heavy red silk tassels at each of the bag's upper corners.
Subject:	households crafts weaving needlework
Credit:	Gift of Pearl Evelyn Moore, Banff, 1979
Catalogue Number:	103.08.0072

Images



This material is presented as originally created; it may contain outdated cultural descriptions and potentially offensive content. [Read more.](#)