



## Alice Fulmer fonds

<https://archives.whyte.org/en/permalink/descriptions189>

Part Of: Alice Fulmer fonds

Description Level: 1 / Fonds

Fonds Number: M 70  
V 217

Sous-Fonds: M70 / V217

Accession Number: 149, 385, 992, 1065, 1375, 2416, 3083, 3306

Reference Code: M70 / V217

GMD: Photograph  
Photograph print  
Textual record  
Private record

Date Range: 1833, 1886-1969

Physical Description: ca.95 cm of textual records. -- 40 photographs : prints

History /  
Biographical:

Alice G. Fulmer, 1896-1989, was a resident and amateur local historian at Banff, Alberta, Canada.

### Scope & Content:

Fonds consists primarily of 155 topical files prepared by Alice Fulmer as a personal project between 1964 and 1969 and composed of historical notes, transcripts, clippings, ephemera and photographs. Topics center around Banff history and personalities; Canadian Rockies history, flora and fauna; skiing, Indians and miscellaneous Alberta and British Columbia subjects. ; Also includes the marriage record of Fulmer's great-grandparents, 1833; reminiscences about Emmeline Savatard, 1980; and a scrapbook on Banff history and personalities containing mainly Walter P. Fulmer's papers.

Photographs include personal and family photographs; also photographs collected by Alice Fulmer. Photographs pertain to Alice Fulmer, alpine trips, Fulmer family, early Banff activities and buildings, 1886-1967; includes some copies.

Name Access: Fulmer, Alice

Subject Access: Community life  
Family and personal life

Access Restrictions: No restrictions on access  
Copyright, privacy, commercial use and other restrictions may apply

Language: Language is English

Finding Aid: Finding aids and reference tools: basic description

Related Material: Related in part to Helen Fulmer Wells fonds (M480/V675)

Creator: Fulmer, Alice

Category: Family and personal life

Title Source: Title based on accession records and contents of fonds

Processing Status: Processed

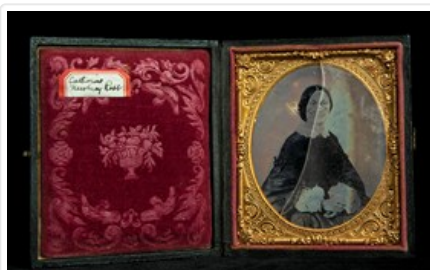


## Catharine Newbury Robb

<https://archives.whyte.org/en/permalink/descriptions23925>

Part Of:	Peter and Catharine Whyte fonds
Description Level:	6 / Item
Fonds Number:	M36 / V683 / S37
Series:	V683 / IV / A : Robb / Morse Family Personal Series
Sous-Fonds:	V683
Accession Number:	.
Reference Code:	V683 / IV / A / PT - 16
GMD:	Photograph Tintype
Date Range:	[ca. 1850 - ca. 1870]
Physical Description:	Cased Photograph : 1 b&w ambrotype --
Scope & Content:	Case contains 1 b&w ambrotype. Ambrotype documents an young woman (possibly Catharine Newbury Robb) posed for a portrait.
Subject Access:	Portrait
Language:	English
Title Source:	Title as found on item
Content Details:	Ambrotype in case. Case covered with black coated paper. Front and back covers feature architectural and vegetal design in relief. The inside cover features a design debossed in red velvet and an adhesive sticker that reads "Catharine Newbury Robb." The Ambrotype is framed in a brass coloured, decorative metal mat.
Processing Status:	Processed

## Images



OrderRemove



## Clifford Jackson White fonds

<https://archives.whyte.org/en/permalink/descriptions665>

Part Of: Clifford Jackson White fonds

Description Level: 1 / Fonds

Fonds Number: M 168  
V 685

Sous-Fonds: M 168  
V 685

Accession Number: 6335 (moved to V682), 7044, 7771

Reference Code: M168 / V685

GMD: Motion picture  
Film  
Video  
Photograph  
Photograph print  
Textual record  
Private record  
Published record

Date Range: 1847-2003

Physical Description: 7 cm textual records. -- 24 photographs: prints. -- 2 motion pictures: 16mm film, video

### History /

#### Biographical:

Clifford Jackson White (II), 1929-2003, was born in Banff, Alberta, the son of Clifford and Mildred (Jackson) White and the grandson of Dave White. Clifford J. White attended public and high school in Banff and in 1951, married Beverly Pogue of Calgary. Together they have four children: Clifford (III), Tara, Bradford, and Tristan. Cliff White was thirteen years old when he guided for his father at Mount Temple, and he operated the bulldozer for Sunshine Village from 1946 to 1949. From 1949 to 1953, Cliff White was assistant to the general manager of Snowmobile Tours at the Icefields, and 1953-1963, he owned a service station in Banff. In 1960, White purchased Sunshine Village ski resort, sold it in 1966 and remained the manager there until 1977. White succeeded his aunt, Catharine Whyte as President of the Board of Trustees, Peter and Catharine Whyte Foundation, 1979-1993. White was a member of the Kiwanis Club at Banff, and was the director of the Banff Chamber of Commerce. He was a Cub pack leader from 1953 to 1956.

#### Scope & Content:

Fonds consist of eight separate series: A. Moving Images; B. Photographs; C. Banff - Lake Louise - Chamber of Commerce Plaques; D. Printed Materials; E. Newspaper Clippings; F. Sunshine Village Lodge & Skoki Ski Lodge; G. Written Materials; H. Phone List. Fonds consists of records pertaining primarily to Sunshine ski area. Textual records include a speech: "The Human History of Skiing at lake Louise," Feb. 8, 1992. Discusses origins of skiing in Banff, 1920s, the establishment of Skoki and Mt. Temple Chalet, and the first chair lifts. The remainder of the speech deals with White's recollections of a typical "ski week" in 1943 when he worked as a licensed ski guide at Mount Temple Chalet. Also includes a list of significant dates and events in Lake Louise ski history, 1894-1991. Textual records also include personal and legal records, Sunshine ski area pamphlets, 1960 - ?, correspondence, certificates, clippings, and pamphlets. Photographs consist of 20 prints re Clifford J. White, Beverly White and their children; Clifford White Sr. and ski development history. Motion pictures include a film "Top of the World," ca. 1970, 16mm, sd., col., ca. 500 ft., ca. 14 minutes. "A Jim Rice Production." Sunshine Village promotional film: skiing, lodge, lifts, helishots, etc. interspersed with 1930s footage of Skoki area skiing (some of which exists in this fonds). Film was property of Sunshine Village. Clifford J. White supplied some historical film footage by or collected by his father, Clifford White, for this film.

Name Access:	White, Clifford Jackson
Subject Access:	Commerce and industry Environment Family and personal life Sports, recreation and leisure
Access Restrictions:	Some restrictions on access
Language:	Language is English
Creator:	White, Clifford Jackson
Category:	Commerce and industry Environment Family and personal life Sports, recreation and leisure
Biographical Source Notes:	Bio file; Who's Who in Alberta, 1969
Title Source:	Title based on provenance of fonds
Processing Status:	Processed

This material is presented as originally created; it may contain outdated cultural descriptions and potentially offensive content. [Read more.](#)



## E.S. Morse

<https://archives.whyte.org/en/permalink/descriptions23927>

Part Of:	Peter and Catharine Whyte fonds
Description Level:	6 / Item
Fonds Number:	M36 / V683 / S37
Series:	V683 / IV / A : Robb / Morse Family Personal Series
Sous-Fonds:	V683
Accession Number:	.
Reference Code:	V683 / IV / A / PT - 21
GMD:	Photograph Tintype
Date Range:	[ca. 1850 - ca. 1870]
Physical Description:	Cased Photograph : 1 b&w ambrotype --
Scope & Content:	<p>Case contains 1 b&amp;w ambrotype. Ambrotype documents a young man posing for a portrait. Possibly E.S. Morse.</p>
Subject Access:	Portrait
Language:	English
Title Source:	Title as found on item
Content Details:	<p>Ambrotype in wooden case. Case covered with black coated paper. Front and back covers feature architectural and vegetal design in relief. The inside cover features a design debossed in red velvet and an adhesive sticker that reads "E.S. Morse." The Ambrotype is framed in a brass coloured, decorative metal mat</p>
Processing Status:	Processed

## Images



OrderRemove

This material is presented as originally created; it may contain outdated cultural descriptions and potentially offensive content. [Read more.](#)

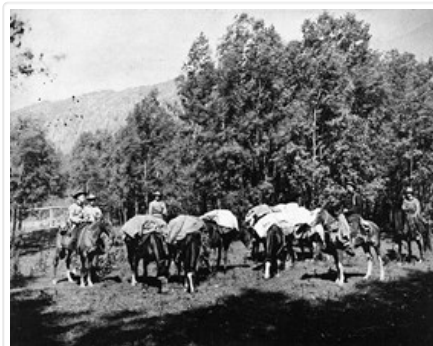


## [Hunting party preparing to depart from Banff Indian Grounds or Brewster Corrals, Banff]

<https://archives.whyte.org/en/permalink/descriptions49289>

Part Of:	Pat Brewster fonds
Description Level:	6 / Item
Fonds Number:	M2 / V91 / S21
Sous-Fonds:	V91
Reference Code:	v91 / 12 / a / na66 - 1716
GMD:	Photograph Negative, copy Photograph, print
Date Range:	1850-1910
Physical Description:	1 photograph : negative : copy negative
Scope & Content:	Image of five people on horseback with five pack horses
Subject Access:	Discovery and Exploration Environment and Nature Sports and Recreation Transportation
Geographic Access:	Alberta British Columbia
Title Source:	Title based on contents of file
Processing Status:	Processed

### Images



OrderRemove

This material is presented as originally created; it may contain outdated cultural descriptions and potentially offensive content. [Read more.](#)

## J. Monroe Thorington fonds

<https://archives.whyte.org/en/permalink/descriptions377>



Part Of:	J. Monroe Thorington fonds
Description Level:	1 / Fonds
Fonds Number:	M 106 V 622
Sous-Fonds:	M 106 V 622
Accession Number:	740, 1001, 1034, 1093, 1103, 1133, 1285, 1406, 1411, 1439, 1561, 1600, 1804, 1810, 1965, 1980, 2110, 2279, 2536, 2713, 3059
Reference Code:	M106 / V622
GMD:	Photograph Negative Photograph print Transparency Textual record Private record
Date Range:	1825-1974
Physical Description:	ca.1.8 m of textual records. -- 64 photographs : prints, transparencies, copy negatives
History / Biographical:	<p>J. Monroe "Roy" Thorington, 1894-1989, was an ophthalmologist, mountaineer and mountain historian at Philadelphia, Pennsylvania, USA. Thorington was a pre-eminent climber and explorer in the Canadian Rockies starting in 1922. He studied the Freshfield and Lyell Glaciers for 22 years and explored and mapped the Purcell Range, British Columbia. Thorington wrote approximately 300 publications on mountaineering, mountain history and the Canadian Rockies. He was active in numerous organizations, particularly the American Alpine Club.</p>
Scope & Content:	<p>Fonds consists of copies of textual records from the Thorington Archives at Princeton University and photographs in both original and copy form.</p> <p>Textual records include: I. Thompson-Little Collection and supplement 1895- 1907; letters chiefly addressed to Charles Sproule Thompson collected by George T. Little, Appalachian Mountain Club and supplemented by material mainly from the estate of Charles E. Fay. II. American Alpine Club, 1903- 1967; correspondence with American Alpine Club members elected to 1918. III. Alps and Canada mountaineering correspondence. IV. Guide books and writings; pertains to writings on the Canadian Rockies and Conrad Kain. V. Dr. W. S. Ladd and Allen Carpe papers 1908-1935.</p> <p>VI. Photographs, 1871-1970, pertain mainly to Thorington's climbing associates, mountain guides, friends and climbs; also, tombstones of friends at Banff Cemetery.</p> <p>Fonds also includes miscellaneous original summit notes, articles, etc. concerning landmark mountaineering activities in the Canadian Rockies.</p>
Name Access:	Thorington, J. Monroe
Subject Access:	Exploration, discovery and travel Sports, recreation and leisure
Access Restrictions:	No restrictions on access Copyright, privacy, commercial use and other restrictions may apply
Language:	Language is English
Finding Aid:	Finding aids and reference tools: series description
Creator:	Thorington, J. Monroe

Category: Exploration, discovery and travel  
Sports, recreation and leisure  
Title Source: Title based on accession records and contents of fonds  
Processing Status: Processed

This material is presented as originally created; it may contain outdated cultural descriptions and potentially offensive content. [Read more.](#)



## Jim and Dorothy Boyce fonds

<https://archives.whyte.org/en/permalink/descriptions104>

Part Of: Jim and Dorothy Boyce fonds  
Description Level: 1 / Fonds  
Fonds Number: M250 / V79  
Sous-Fonds: M 250  
V 79  
Accession Number: 1418, 1570, 1574, 2453, 3037, 3087, 3609 (unproc), 5575 (unproc), 5856 (unproc), 6359 (unproc), 6762 (unproc), 6790 (unproc), 7047 (unproc), 7363 (unproc)  
Reference Code: M250 / V79  
GMD: Motion picture  
Film  
Photograph  
Album  
Negative  
Photograph print  
Textual record  
Corporate record  
Private record  
Published record  
Date Range: [ca.1850-2001]  
Physical Description: ca.6.5 m textual records. -- ca.3500 photographs: prints, negatives, copy negatives. -- 4 photograph albums. -- 5 motion pictures: film reels; 8mm, 16mm; col.



## History /

### Biographical:

James (Jim) Hawkins Boyce, 1892-1982, was a guide, outfitter, log builder and businessman at Lake Louise and Banff, Alberta, Canada. Dorothy Boyce was a pharmacist and business woman at Calgary, Quebec and Banff, Canada.

Jim Boyce was the son of Joseph Boyce, 1856-1927, and stepson of Wilma "Josephine" Boyce, 1866-1952, of Banff, Alberta. In 1911, Jim joined his father building trails. His guiding and outfitting career began with Jimmy Simpson's outfit as a trail cook. During the 1920s Boyce formed his own outfit with Max Brooks and went on to guide prominent clients Carl Rungius, Caroline Hinman and her parties, George and Adeline Link and William D. Cox of Chicago, USA.

In addition to guiding and outfitting, Jim Boyce worked with motion picture companies on location in the Rockies with his dog teams during the 1920s. A number of well-known log buildings are testament to his log-building skills, including Skoki, Mount Temple Lodge and the Lake Louise Ski Lodge. During the 1930s, Boyce managed and expanded Skoki Lodge. He also supervised road construction on the Banff-Jasper Highway and the Alaska Alcan Military Highway for the U. S. Army during the Second World War and operated the Bar C Ranch (for William D. Cox) for many years. Boyce made his home in Banff.

Dorothy Frances Llewellyn (Whiteman) Boyce, 1901-2001, was the daughter of Rev Arthur Wellesley Richard Whiteman, 1865-1926, and Nina L. Whiteman, 1873-1956. After studying pharmacy at the University of Alberta, Dorothy came to Banff in 1922 to work for Dr. Brett. She subsequently studied at the University of Toronto, Ontario; worked at the Calgary General Hospital, Alberta, from 1926 to 1940; and during the Second World War, worked as a chemist in Quebec, Canada. After the death of her first husband, Tronson James Draper, 1879-1949, an oilman of Calgary, Alberta, Dorothy became a permanent resident of Banff. She owned and operated Travellers Digest in Banff and married Jim Boyce in 1957.

### Scope & Content:

Fonds consists of material pertaining to the separate careers and families of Jim and Dorothy Boyce, as well as material from their life together.

Jim Boyce material consists mainly of business and personal papers and photographs, ca.1910-1982. Business papers arise mainly from the incorporation, operation and expropriation of the Lake Louise Ski Lodge (later Post Hotel) 1941-1969. Other business and personal material pertains to Skoki Lodge, 1933-1942; guiding and outfitting, 1938-1940; Army Service Forces and Alaska Alcan Military Highway, 1943-1944; Bar C Ranch, 1947-1969; laundry and rental businesses, 1962-1965, plans for Boyce house, Banff and family items. Correspondents include William D. Cox and Eldon Woolliams. Jim Boyce photographs pertain to family, friends, associates and activities, Banff and Skoki areas; includes guiding and outfitting, hunting, motion picture and dog team activities, Skoki Lodge and region, Alaska-Yukon activities, Bar C Ranch and personal material.

Papers of Dorothy Boyce, 1901-ca.1950, pertain to her childhood, university career, business life and first marriage; Dorothy Boyce photographs, ca.1920s-1940, pertain to family, friends, professional and recreational activities in Banff, Banff and Yoho National Parks, Calgary, Edmonton, Vancouver and Toronto.

Jim and Dorothy Boyce joint material includes photographs, 1900s-1990s, and incoming letters pertaining to home, travel and friends. Album includes mainly published postcards from all over the world. Fonds also includes Boyce family personal and financial papers, 1901-1928; business and estate papers of Joseph Boyce, 1908-1954; Tronson Draper and Draper family personal and professional papers and photographs, 1906-1949; and Whiteman family papers and photographs, ca.1860, 1885-ca.1925. Also included in the Boyce's personal records are film reels ca.1920-1970 which pertain mainly to the Skoki area.

Name Access: Boyce, Jim  
Boyce, Dorothy

Subject Access:	Exploration, discovery and travel Family and personal life
Access Restrictions:	Some restriction/s on access Copyright, privacy, commercial use and other restrictions may apply
Language:	English
Finding Aid:	Finding aids and reference tools: preliminary electronic finding aid motion picture summaries
Related Material:	Transparencies by Adeline and/or George Link of trips with Jim Boyce, formerly retained by Jim Boyce, can be found in George K. K. Link fonds (M60/V276) Accompanied by artifacts (Heritage collections, Whyte Museum)
Creator:	Boyce, Jim Boyce, Dorothy
Category:	Exploration, discovery and travel Family and personal life
Title Source:	Title based on accession records and contents of fonds
Processing Status:	Processed / Unprocessed

This material is presented as originally created; it may contain outdated cultural descriptions and potentially offensive content. [Read more.](#)



## Mary (Molly) Wright Adams fonds

<https://archives.whyte.org/en/permalink/descriptions56758>

Part Of:	Mary (Molly) Wright Adams fonds
Description Level:	1 / Fonds
Fonds Number:	M555 V777
Sous-Fonds:	M555 V777
Accession Number:	2018.8685
Reference Code:	M555 / V777
GMD:	Photograph Album Photograph print Textual record Diary Drawing Postcard Private record
Responsibility:	Some materials produced by Catharine (Adams) Elkin

Date Range:	[ca.1844 - 1909] [ca.1939 - 1944] 1980 - 1981 2014
Physical Description:	21 cm of textual records -- 16 postcards -- 3 drawings -- 1 photograph album : 107 b&w photographs
History / Biographical:	Mary Wright (Molly) Adams was born on 15 October 1868. in Ridgefield Connecticut. She was the third of five children born to Cornelia Ann Cook (1830-1902) and Daniel Lucius Adams (1814 - 1899) She died in Kobe, Japan on 23 January 1909 and was buried there.
Scope & Content:	Fonds consists of textual records, postcards, drawings and one photograph album pertaining to Mary (Molly) Wright Adams (1868-1909); transcripts of Molly's original letters which were compiled by Molly's sister, Catharine Elkin (nee Adams) between ca.1939 and 1941; and transcriptions of letters sent between Molly's extended family members [including members of the Adams, Cook and Wright families], ca.1844 and 1866.  Textual records primarily consist of correspondence sent between Molly Adams and various friends and family members [ca.1891-1909].
Notes:	Fonds consists of two series:  Series I : Correspondence [contains two sub-series: I / A : Molly Wright Adams ; I / B : Extended family] Series II : Personal and collected records
Name Access:	Adams, Molly Schaffer, Mary
Subject Access:	Family and personal life Family Correspondence Travel Exploration
Geographic Access:	United States of America Connecticut New York Europe
Language:	English
Creator:	Mary (Molly) Wright Adams fonds
Category:	Family and personal life Exploration and travel
Biographical Source Notes:	Searching for Mary Schaffer: Women Wilderness Photography by Colleen Skidmore
Title Source:	Title based on contents of fonds
Processing Status:	Processed

This material is presented as originally created; it may contain outdated cultural descriptions and potentially offensive content. [Read more.](#)



## Moore family fonds

<https://archives.whyte.org/en/permalink/descriptions289>

Part Of:	Moore family fonds
Description Level:	1 / Fonds
Fonds Number:	M 307 V 439
Sous-Fonds:	M 307 V 439
Accession Number:	347, 421, 988, 1018, 1029, 1891, 2037, 2091, 2764, 2769, 2828, 2872, 2933, 3891, 5248, 5581, 6020, 7412 (unproc)
Reference Code:	M307 / V439
GMD:	Photograph Album Negative Photograph print Transparency Textual record Diary Drawing Private record Published record Scrapbook
Date Range:	1838-1973
Physical Description:	ca.1 m textual records. -- ca.3400 photographs: prints, transparencies, negatives. -- 10 photograph albums (ca.1000 prints). -- 24 motion pictures.

### History /

#### Biographical:

The Moore family resided at Banff, Alberta and Yoho Valley, British Columbia, Canada. Col. Philip A. Moore, 1879-1951, was a guide, soldier, lecturer and publicist. Pearl Brewster Moore, 1889-1973, was a homemaker and tourist lodge operator. Daughter, Edmee Brewster Moore (Reid), 1908-1971, was a homemaker and wife of Charles Reid. Pearl Brewster, born in Banff, was an active sportswoman. In 1905, she met Philip Moore, who had joined Jim and Bill Brewster in the packing business. The Moores made their home in Banff in 1907. A trained soldier, Philip Moore distinguished himself in France in the First World War and served with the Calgary Highlanders during the Second World War. The Moores ran various Canadian Pacific Railway facilities, including Yoho Valley Bungalow Camp, during the 1920s and early 1930s. Col. Moore lectured widely during this period using motion pictures and lantern slides. During the 1930s, the Moores travelled extensively and were active in the Trail Riders of the Canadian Rockies. Pearl Moore was instrumental in the Banff-Jasper fund during the Second World War. In 1971, Pearl Moore gave their log home, a showcase of Stoney Nakoda artifacts and art, to the Whyte Museum of the Canadian Rockies.

## Scope & Content:

Fonds consists of seven series :

I. Philip Moore family series, ca.1882-1964, 42 cm., and contains three sub-series: A. Personal papers and photographs, 1897-1964 (college career, personal life, activities and estate); B. Professional papers and photographs, 1905-[ca.1950] (military career and research, writing and lecturing); C. Volunteer activities, 1935-1945 (Jubilee Committee; National War Finance Committee, Victory Loan program).

II. Pearl Moore series. -- 1890-1973. -- 21.5 cm of textual records. -- 156 photographs: prints. -  
- Series consists of three sub-series: A. Personal papers and photographs, 1990-1973 (photographs, letters, diaries, notes and notebooks, and other material); B. Legal and financial papers, 1908-1971; C. Volunteer activities, [1940?]-1942 (Banff-Jasper Spitfire Fund, the Red Cross, wartime work).

III. Edmee Moore series. -- 1908-1965. -- 8 cm of textual records. -- 152 photographs : prints, 4 photograph albums. -- Series consists of six sub-series: A. Photographs, 1908-1965; B. Letters and notes, [ca.1915-ca.1920]; C. Sketchbooks; D. Diaries and scrapbooks, 1926-1938; E. Financial and legal papers, 1935-1965; F. Other, 1919-1953.

IV. Philip Moore family series. -- 1885-1970. -- 20 cm of textual records. -- 1183 photographs (1075 prints and negatives, 117 transparencies, 51 stereo cards). -- 11 motion pictures. -- Series consists of seven sub-series: A. Family portraits, 1885-[ca.1970]; B. Home, friends and activities, [ca.1910]-1962; C. Financial papers, 1907-1951; D. Travel, 1931-1936; E. Business papers, bungalow camp operations, 1921-1932; F. Banff/Lake Louise area photographs, 1885-1965; G. Other, [ca.1895-ca.1960].

V. Moore and Brown families series. -- 1838-1950. -- 8 cm of textual records. -- 156 photographs : prints. -- Series consists of five sub-series: A. Roger Brown Moore, 1890-1931; B. Maria K. Moore estate, 1922-1927; C. William Gordon Moore, Laura Moore and Roger Brown Moore estate, 1930-1939; D. Maria K. Moore and Roger Brown Moore, 1925-1930; E. Other material, 1838-1950.

VI. Brewster family series. -- [ca.1880]-1970. -- 6 cm of textual records. -- 289 photographs : prints, 2 photograph albums. -- Series consists of five sub-series: A. John and Isabella Brewster, 1904-1948; B. Fred Brewster, 1909-1953; C. James I. Brewster, 1909-1936; D. Fern Brewster, 1930-1932; E. Brewster family, [ca.1880]-1970; F. Other material, 1898-1969.

VII. Other material series. -- 1885-1970. -- 709 photographs : prints. -- Series consists of three sub-series: A. Scenics, 1885-1970; B. People, 1885-1970; C. Other, 1885-1970.

Name Access:	Moore, Edmee Moore, Pearl Moore, Phil
Subject Access:	Exploration, discovery and travel Military
Access Restrictions:	Some restrictions on access to originals Copyright, privacy, commercial use and other restrictions may apply
Language:	Language is English
Finding Aid:	Finding aids and reference tools: file description and index electronic finding aid summaries and video reference copies for some motion pictures
Related Material:	Portion of photographs related by provenance to Mary Schaffer Warren fonds (M79 /V527)
Creator:	Moore, Pearl Moore, Philip
Category:	Exploration, discovery and travel Military

Title Source: Title based on contents of fonds  
Processing Status: Processed / Unprocessed

This material is presented as originally created; it may contain outdated cultural descriptions and potentially offensive content. [Read more.](#)



## Norman Sanson fonds

<https://archives.whyte.org/en/permalink/descriptions31>

Part Of: Norman Sanson fonds  
Description Level: 1 / Fonds  
Fonds Number: M3  
V246  
Sous-Fonds: M3  
V246  
Accession Number: 109, 148, 181, 334, 384, 400, 439, 448, 1036, 1148, 1191, 2072, 2484, 2594, 2771, 3028, 6351, 6739, 8096  
Reference Code: M3 / V246  
GMD: Photograph  
Album  
Photograph print  
Postcard  
Textual record  
Diary  
Map  
Private record  
Published record  
Scrapbook  
Date Range: 1855-1949  
Physical Description: ca.55 cm and 21 v. of textual records. -- 46 photograph albums (ca.7500 prints). -- 1 postcard set (37 prints)

## History /

### Biographical:

Norman Bethune Sanson, 1862-1949, was a naturalist, meteorologist and museum curator at Banff, Alberta, Canada. Born in Toronto, Ontario, the son of a prominent clergyman, he developed a life-long interest in natural history as a boy. Sanson came west in 1885 to fight in the Riel Rebellion as a member of the Queen's Own Rifles.

In 1892, Sanson came to Banff as an accountant for the Sanitarium Hotel. He also did book-keeping for other local businesses and handled the town's weather reports. In 1896 he was appointed curator of the Park Museum and also worked as zookeeper for the Banff Zoo. From 1896 until 1931, Sanson was meteorological officer and curator of the Park Museum. In 1903 an observatory was built on Sulphur Mountain on a site chosen by Sanson. During the period 1903-1931, Sanson made one thousand ascents of Sulphur Mountain to collect weather records. In 1948, the Dominion Government acknowledged his many years of service by naming a peak on the mountain for him.

As a nature enthusiast, Sanson was well-known both in Banff and beyond. He was an avid collector of flora and fauna, both privately and through his job as museum curator. Sanson was an active member of the Alpine Club of Canada, the Skyline Hikers of the Canadian Rockies and the Banff Rotary Club. He was a warden of St. George's Anglican Church and a supporter of the Canadian Bible Society. He was active in community events such as the Banff Winter Carnival, for which he organized and led the snowshoeing events. An ardent mountain traveller, he enjoyed both hiking and snowshoeing. Following retirement, Sanson toured extensively on foot throughout Britain and Europe.

### Scope & Content:

Fonds consists of papers and photographs resulting from Sanson's life and work.

Textual records consist of: I. Correspondence, 1901-1944, 2 cm.; II. Research and professional papers, 1890-1947, 45 cm., includes notebooks and notes pertaining to nature study, meteorological research, Sulphur Mountain and maps; III. Travel diary, 1900-1933, 1 cm.; IV. Register books, 1931, 1941, n.d. 2 cm.; V. Scrapbooks, 1909-1931, n.d., 21 vol, many containing postcards from Great Britain and around the world; VI. Miscellaneous, 1855-1895, n.d., 4 cm.

Photographs consist of: I. Albums, 1880s-1949, 46 v., pertain to Norman Sanson's life and work; document Banff Park Museum, Sulphur Mountain and Sulphur Mountain Observatory; natural history, including mountain flora, collecting trips, weather surveys and snow surveys; Banff events, including Banff Winter Carnival, Banff Indian Days, Highland Gatherings and Banff Regatta; mountain travels and travels throughout Canada, United States, England and Europe; friends, associates and Banff personalities. Detailed identifications provided by Norman Sanson. II. Postcard set, ca.1930.

Name Access: Sanson, Norman

Subject Access: Environment

Exploration, discovery and travel

Science and technology

Access Restrictions: Some restrictions on access to originals

Copyright, privacy, commercial use and other restrictions may apply

Language: Language is English

Finding Aid: Finding aids and reference tools: arrangement outline

series description and partial file description

reference microfilm copies of photographs albums and some textual materials

Creator: Sanson, Norman

Category: Environment  
Exploration, discovery and travel  
Science and technology  
Title Source: Title based on contents of fonds  
Processing Status: Processed

This material is presented as originally created; it may contain outdated cultural descriptions and potentially offensive content. [Read more.](#)



## Pat Brewster fonds

<https://archives.whyte.org/en/permalink/descriptions15>

Part Of: Pat Brewster fonds  
Description Level: 1 / Fonds  
Fonds Number: M2 / V91 / S21  
Sous-Fonds: V91  
Accession Number: 12, 13, 80, 93, 110, 145, 340, 380, 899, 1006, 1110, 1179, 1210, 1235, 1398, 1409, 1440, 1505, 1784, 1874, 2176, 2216, 2303, 2361, 2410, 2643, 2791, 2816, 2880, 2903, 2933, 2940, 3051, 3157, 3181, 3393, 3642, 3733, 3734, 3780, 3821, 3921, 3969, 5028, 5336, 6018  
Reference Code: M2 / S21 / V91  
GMD: Photograph  
Album  
Negative  
Photograph print  
Postcard  
Transparency  
Sound recording  
Cassette  
Textual record  
Drawing  
Map  
Poster  
Private record  
Date Range: 1841-1983  
Physical Description: ca.80 cm of textual material. -- ca.900 photographs : prints, postcards, transparencies, negatives, copy negatives. -- 1 photograph album (50 prints). -- 3 sound recordings : audio tape cassettes



## History /

### Biographical:

Forrest Oliver "Pat" Brewster, 1896-1982, was a trail guide, outfitter and businessman in Banff, Alberta, Canada. Pat was a native and life-long resident of Banff. As a boy, he was an active Boy Scout and, by age seventeen, was a big game guide. After serving in World War I, Brewster established the first permanent camp at Lake O'Hara for the Canadian Pacific Railway. In 1926, he took over the Brewster Transport Company outfitting business from his brothers, Bill and Jim. In the 1930s, he became involved in skiing explorations in the Assiniboine, Skoki and Sunshine areas. Pat Brewster was active in community affairs and, in his later years, was an avid historian of the region. He published three books of reminiscences between 1975 and 1982.

### Scope & Content:

Fonds consists of four series: I. Personal, II. Professional, III. Activities, IV. Brewster family.

I. Personal series, 1905-1982, 18 cm of textual records, 160 photographs, 2 sound recordings. Includes correspondence, interview and recorded conversation, address/notebook, artwork, other textual records, photographs.

II. Professional series, 1892-1982, 47.5 cm of textual records, 266 photographs, 1 sound recording. Includes papers pertaining to various Brewster family and other businesses, writing papers and sound recording, and photographs pertaining to guiding and outfitting, tourism promotion and other.

III. Activities series, 1841-1983, 6.5 cm of textual records, 262 photographs. Pertains to genealogical research, other activities and collected material.

IV. Brewster family series, 1841-1981, 2.5 cm of textual records, 132 photographs. Pertains to Brewster family, Jack Brewster, John Brewster, Pearl Brewster Moore and the Moore family.

Name Access:	Brewster, Pat
Subject Access:	Commerce and industry Family and personal life Sports, recreation and leisure
Access Restrictions:	Some restrictions on access to originals Copyright, privacy, commercial use and other restrictions may apply
Language:	English
Finding Aid:	Finding aids and reference tools: arrangement outline series and file description electronic finding aid reference copies and summaries for sound recordings
Creator:	Brewster, Pat
Category:	Commerce and industry Family and personal life Sports, recreation and leisure
Title Source:	Title based on contents of fonds
Processing Status:	Processed

This material is presented as originally created; it may contain outdated cultural descriptions and potentially offensive content. [Read more.](#)

## Peter and Catharine Whyte fonds



<https://archives.whyte.org/en/permalink/descriptions36>

Part Of: Peter and Catharine Whyte fonds

Description Level: 1 / Fonds

Fonds Number: M36 / V683 / S37

Sous-Fonds: TBD

Accession Number: 3069 and various

Reference Code: M36 / S37 / V683

GMD: Drawing

Motion picture

Film

Photograph

Album

Ambrotype

Cased photograph

Daguerreotype

Negative

Photograph print

Postcard

Tintype

Transparency

Sound recording

Cassette

Reel to reel

Textual record

Plan

Poster

Private record

Published record

Other Title Info: Also known as the Whyte family fonds

Date Range: 1856-1980

Physical Description: 25 m of textual records. -- ca.46,000 photographs : prints, albums, postcards, cased photographs, transparencies, negatives. -- 178 sound recordings : audio tape reels, audio tape cassettes. -- 6 motion pictures (and film strips)

## History /

### Biographical:

Peter and Catharine Whyte were artists, photographers, outdoor enthusiasts, travelers, philanthropists and cultural workers at Banff, Alberta, Canada. Peter Whyte, 1905-1966, was born at Banff in 1905 to pioneer merchant Dave White and Annie (Curren) White. He was an accomplished skier and ski jumper and one of the region's first native-born painters with an intimate knowledge of the mountains and was an active photographer from ca.1920 until the 1950s. Peter Whyte studied art at the Otis Art Institute, Los Angeles, 1923-1924, and at the School of the Museum of Fine Arts at Boston, 1925, where he met Catharine Robb. Catharine Robb Whyte, 1906-1979, was born in 1906 at Concord, Massachusetts and grew up amongst the wealth and creativity of the Robb and Morse families. She studied at the School of the Museum of Fine Arts at Boston, 1925-1929.

Following their marriage in 1930, the Whytes pursued a life of painting, photography, hiking, skiing and travelling. Their log home and studio in Banff became a focal point for their artist friends, Stoney Indians and local pioneers. Catharine shared Pete's involvement in skiing and hiking organizations and together they managed Skoki Lodge from 1932-1934. In following years, the Whytes travelled extensively. During the Second World War, Peter served in the reserve army, with the Royal Canadian Air Force as a photographer and, briefly, as an official war artist. Catharine continued to paint and maintain their home and, when possible, accompanied Pete to his military postings. In civilian life, Pete resumed his art career, explored new photographic techniques and sculpted.

Throughout the 1950s and 1960s, the Whytes formulated plans for a foundation to preserve the art and history of the Canadian Rockies. Plans for a building to house an archives, public library and gallery were in preparation when Pete died in 1966. The Peter Whyte Foundation was named in his honour. Catharine immersed herself in the development of what is now the Whyte Museum of the Canadian Rockies, in the cultural community, painting, outdoor activity, travel and work with the Stoney First Nations. She became a more active photographer, recording her travels and outdoor pursuits. She served in an official capacity with numerous cultural and charitable organizations, was a patron to individuals studying art and music, and supported numerous causes relating to the Stoney First Nations. Catharine also supported causes related to multiculturalism, regional culture and recreation, and cancer research. Despite her modesty and often anonymous patronage of causes, Catharine was recognized with numerous awards and honours, including the Order of Canada in 1978. She died in Banff in 1979.

### Scope & Content:

Fonds consists of papers, photographs and sound recordings of Peter and Catharine Whyte and the papers and photographs of their respective families. Consists of three sous-fonds: V683, S37 and M36. M36 and S37 consists of three series. Series I: Peter and Catharine Whyte, Series II: Robb and Morse families, Series III: White and Curren families. Within Series I, there are four Sub-series: Series: A. Catharine Robb Whyte papers; B. Peter Whyte papers; C. Peter and Catharine Whyte papers accessioned after 2017; D. Peter and Catharine Whyte sound recordings.

Name Access:	Whyte, Peter Whyte, Catharine
Subject Access:	Arts Communications Environment Exploration, discovery and travel Family and personal life First nations Sports, recreation and leisure

Access Restrictions:	Some restriction/s on access Copyright, privacy, commercial use and other restrictions may apply
Language:	Language is English
Finding Aid:	Finding aids and reference tools: arrangement outline sous-fonds, series and file description for textual sub-series and group description for photographs item description, subject/proper name index, and summaries for sound recordings reference copies for sound recordings
Creator:	Whyte, Peter Whyte, Catharine
Category:	Arts Communications Environment Exploration, discovery and travel Family and personal life First nations Sports, recreation and leisure
Title Source:	Title based on contents of fonds
Processing Status:	Processed

## Electronic Resources



m36\_s37\_finding\_aid.pdf

 Read PDF

 Download PDF

This material is presented as originally created; it may contain outdated cultural descriptions and potentially offensive content. [Read more.](#)



## Southern Alberta research project

<https://archives.whyte.org/en/permalink/descriptions55619>

Part Of: Luxton family fonds

Description Level: 4 / Sub-series

Fonds Number:	LUX
Series:	LUX / II / C : Personal records
Sous-Fonds:	LUX / II : Eleanor Luxton sous-fonds
Accession Number:	LUX
Reference Code:	LUX / II / C6
GMD:	Cabinet card Diary Organization record Photograph Postcard Print Private record Published record Scrapbook Textual record Tintype
Date Range:	[ca.1845-1920]
Physical Description:	29 cm of textual records -- 29 photographs (28 b&w prints, 1 tintype) ; 20 x 25 cm or smaller
Scope & Content:	Sub-series consists of textual and visual materials pertaining to the history of Southern Alberta. Includes personal accounts, day books and diaries, genealogical research, records of livestock and other trade, and portrait and group photographs depicting early settlers of Southern Alberta. Materials in sub-series believed to have been collected by Eleanor Luxton, possibly on behalf of the Southern Alberta Pioneers' and Old Timers' Association or as part of Eleanor's personal research.

Subject Access:	Activities Agriculture Animals Buildings Businesses Community life Commerce and industry Communications Correspondence Environment Family and personal life Farmland Finances Genealogy History Homestead Immigration and homesteading Inventory Land use Land, settlement and immigration Manufacturing Municipal views Oil Postcards Portrait Property Real estate business Research Settlement
Geographic Access:	Canada Alberta
Reproduction Restrictions:	Some restrictions may apply - fragile materials
Language:	English
Category:	Commerce and industry Communications Family and personal life Environment Land, settlement and immigration Natural resources
Title Source:	Title based on contents of sub-series
Processing Status:	Processed

This material is presented as originally created; it may contain outdated cultural descriptions and



## Transportation

<https://archives.whyte.org/en/permalink/descriptions800>

Part Of: Mary Schaffer fonds

Description Level: 5 / File

Series: II.A. Photographs: lantern slides

Reference Code: V527 / PS 1 - 810 to 830

GMD: Photograph  
Lantern slide  
Transparency

Date Range: 1831-1885

Physical Description: 21 photographs : transparencies; glass

### Scope & Content:

Transparencies are hand-coloured and black and white lantern slides pertaining to transportation: Canadian Pacific Railway, railway travel and ships, derived from various sources. Includes two transparencies by Mary Schaffer

Finding Aid: Copy prints are available for reference use

Location (Copy): Reference prints are available

Title Source: Title based on contents of file.

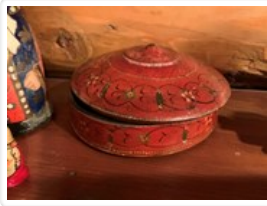
Content Details:

LIST OF LANTERN SLIDES - V527 / PS 1 :

- #810 - Driving the Golden Spike, by Donald Smith; #on CPR, Nov. 7, 1885 / Notman
- #811 - The first engine built by the Canadian Pacific Railway
- #812 - Winnipeg in 1870
- #813 - Quebec Bridge, Quebec
- #814 - DeWitt Clinton and Train 1831 / Chas. Beseler
- #815 - Canadian Pacific Railway, arrival of the first through train at the seaboard of British Columbia
- #816 - [Group at driving of last spike on the CPR, Nov. 7, 1885]
- #817 - [Unidentified locomotive]
- #818 - Passengers boarding standard sleeper
- #819 - Plowing thro. the snow, of the Selkirks & Glacier
- #820 - [Passengers on platform beside Montreal and Boston railway car]
- #821 - Wapta & Safety Switch
- #822 - Red Sucker Tunnel, Lake Superior
- #823 - [Map of Dominion of Canada]
- #824 - [Unidentified railway tunnel]
- #825 - Prospect Point Vancouver Steamer "Beaver"
- #826 - [Unidentified ocean liner]
- #827 - [Empress of Britain in lock of Panama Canal]
- #828 - [Man padding pont] / E.B. Thompson
- #829 - The ferry near Berthier, Que.
- #830 - Forest fire

This material is presented as originally created; it may contain outdated cultural descriptions and potentially offensive content. [Read more.](#)





## Trinket Box

<https://archives.whyte.org/en/permalink/artifact102.04.0200>

Title:	Trinket Box
Date:	1850 – 1900
Material:	wood
Dimensions:	6.3 x 13.0 cm
Description:	A lathe-turned round-dish, flat-bottomed box with a domed, lapping lid which fits flushly over a flange on the box body. Box and lid are painted a boxcar red and decorated with designs of circles and flowers, varnish over paint has oxidized. Interior of box has been painted a dark green.
Subject:	households decorative
Credit:	Gift of Catharine Robb Whyte, O. C., Banff, 1979
Catalogue Number:	102.04.0200

## Images



This material is presented as originally created; it may contain outdated cultural descriptions and potentially offensive content. [Read more.](#)



## Vaux family fonds

<https://archives.whyte.org/en/permalink/descriptions391>

Part Of:	Vaux family fonds
Description Level:	1 / Fonds
Fonds Number:	M 107 V 653
Sous-Fonds:	M 107 V 653
Accession Number:	739, 1117, 1118, 1793, 2883, 3236, 3942, 4012, 7202, 7579 (unproc), 7792 (unproc)
Reference Code:	M107 / V653

GMD:                      Photograph  
                                 Album  
                                 Negative  
                                 Photograph print  
                                 Transparency  
                                 Textual record  
                                 Map  
                                 Private record  
                                 Published record

Date Range:            [after 1855]

Physical Description: 2924 photographs: 2632 negatives, 167 transparencies, 125 prints. -- 1 photograph album (50 prints). -- ca.2.7 m textual records

History /

Biographical:

The Vaux family of Philadelphia, Pennsylvania were photographers, mountaineers and scientists. Mary M. Vaux, 1860-1940, George Vaux Jr., 1863-1927, and William S. Vaux Jr., 1872-1908, were the children of George Vaux (VIII) of Philadelphia. They were all involved in photography in the early 1880s and were members of the Photographic Society of Philadelphia. All three were taking photographs when the family made its first trip west in 1885. The first Vaux family photographs of the Canadian mountain west were made in 1887 during a summer trip along the Canadian Pacific Railway to Glacier House in the Selkirk Mountains of British Columbia in 1887.

The family made frequent visits to the Selkirk and Rocky Mountains over the next two decades to study the Illecillewaet and other glaciers, photograph, paint and climb. George's and Mary's photographic work centred on the mountain landscape, while William's concentrated upon the movement and physical features of glaciers. Due to the size of their large format cameras, the two brothers took most of the photographs during these trips and Mary was responsible for all of the printing. William Vaux died in 1908 and George did not return to the Canadian mountains after 1911; however, Mary Vaux Walcott returned to the region virtually every summer for over forty years. A detailed discussion of their activities is contained in "Legacy In Ice: The Vaux Family and the Canadian Alps," Whyte Foundation, Banff, 1983

## Scope & Content:

Fonds consists of two or more series. Series I. Photography, 1893-1913, is processed. Series II. Textual records are processed and consist of six series.

Photography series consists of twenty-four sub-series: A. to O. Travel 1893 to Travel 1907; P. to S. Travel 1909 to Travel 1913; T. Travel general, 1894?-1912?; U. Prints, 1899-1907; V. Lantern slides, 1900-1909; W. Photograph album, before 1907; X. Textual records, 1893-1910; Y. Damaged Negatives; Z. Mary Schaffer Negatives. Photographic negatives, arranged chronologically, are prominent in the series. Images pertain to landscape studies and scenic views of the Selkirk and Rocky Mountains, especially the Glacier, Yoho and Lake Louise areas; glaciers in the Selkirk and Rocky Mountains, especially Illecillewaet, Asulkan, Yoho and Bow Glaciers; mountain scenes and panorama views in the Selkirks and Rockies; Canadian Pacific Railway in the Selkirks and CPR hotels; Glacier and Field, B.C. and Banff, Alberta and areas; climbing and other mountain activities; United States and Canadian views on trips to the mountains. Negatives include both glass (962 items) and film negatives (1740 items). Textual records are exposure records, original negative envelopes and publications.

Textual series consists of six series: I. Trip Series, II. Correspondence Series, III. Publications Series, IV. George Vaux: Legal and Finance Management Series, V. Photographic Related Material, VI. Other Series (O.S.). Textual records pertain to glacier study, including research papers, maps and publications; William S. Vaux Jr. papers re travels, engineering and architecture, other; George Vaux Jr. writing and other papers; Mary Vaux correspondence and papers re writing and presentations; and other records, 1877, 1912-1913. Textual records also include family travel papers, 1881-1911; George Vaux, Jr. "Glacier" files; correspondence between George Vaux and the Schäffers, 1899-1926; papers of Dr. Charles Schäffer, Mary Schäffer and Schäffer estate, 1855-1927.

Name Access:	Schaffer, Charles Schaffer, Mary Vaux, George Vaux, Mary Vaux, William
Subject Access:	Environment Exploration, discovery and travel Family and personal life
Access Restrictions:	Some restriction/s on access Copyright, privacy, commercial use and other restrictions may apply
Language:	Language is English
Finding Aid:	Finding aids and reference tools: arrangement outline series description file description for Series I electronic finding aid for Series I selected modern reference prints digital images in Images database and in Alberta InSight database
Related Material:	Related by provenance to the Vaux family collection of photographs held by the Library Company of Philadelphia and the Vaux collection of correspondence, documents and graphics held by Special Collections of Haverford College Library, Haverford, Pennsylvania
Creator:	Vaux, George Vaux, Mary Vaux, William

Category: Environment  
Exploration, discovery and travel  
Family and personal life  
Title Source: Title based on contents of fonds  
Processing Status: Processed

This material is presented as originally created; it may contain outdated cultural descriptions and potentially offensive content. [Read more.](#)



## William Hugh Napier fonds

<https://archives.whyte.org/en/permalink/descriptions296>

Part Of: William Hugh Napier fonds  
Description Level: 1 / Fonds  
Fonds Number: M 322  
V 459  
Sous-Fonds: M 522  
V 459  
Accession Number: 2164  
Reference Code: M322 / V459  
GMD: Photograph  
Photograph print  
Textual record  
Private record  
Date Range: 1858, 1901-1909  
Physical Description: 4 textual records. -- 8 photographs : prints  
History /  
Biographical:

Napier was a North West Mounted Police officer and a soldier in the South African War.

### Scope & Content:

Fonds consists of discharge certificates, 1901-1909; and photographs pertaining to W. H. Napier as a North-West Mount Police volunteer for South Africa, 1900. Also includes hand-coloured photograph of W. Napier (father of W. H. Napier) and W. Armstrong in buckskins; possibly Notman Studio photograph, 1858.

Name Access: Napier, William Hugh  
Subject Access: Family and personal life  
Access Restrictions: No restrictions on access  
Public domain (other restrictions may apply)  
Language: Language is English  
Creator: Napier, William Hugh  
Category: Family and personal life  
Title Source: Title based on accession record and materials.  
Processing Status: Processed

This material is presented as originally created; it may contain outdated cultural descriptions and potentially offensive content. [Read more.](#)