



### Alleuvial Fan, Bow Lake

<https://archives.whyte.org/en/permalink/artifactwyp.01.245>

Artist: Peter Whyte (1905 – 1966, Canadian)

Title: Alleuvial Fan, Bow Lake

Date: 1945 – 1960

Medium: oil on canvas

Dimensions: 27.6 x 35.1 cm

Subject: landscape  
Canadian Rockies  
mountain  
lake  
glacier

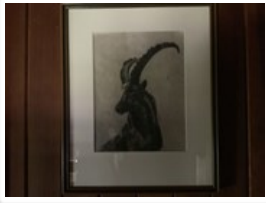
Credit: Gift of Catharine Robb Whyte, O. C., Banff, 1979

Catalogue Number: WYP.01.245

### Images



This material is presented as originally created; it may contain outdated cultural descriptions and potentially offensive content. [Read more.](#)



## Alpine Ibex

<https://archives.whyte.org/en/permalink/artifactthm.03.04>

Artist:	J. Monroe Thorington (1894 – 1989, American)
Title:	Alpine Ibex
Date:	1940
Medium:	charcoal on paper
Dimensions:	25.0 x 20.5 cm
Description:	A charcoal drawing from the chest up of an alpine ibex. The ibex is facing to his right, long horns curve gracefully back.
Subject:	animal alpine ibex
Credit:	Gift of Pearl Evelyn Moore, Banff, 1979
Catalogue Number:	ThM.03.04

## Images



This material is presented as originally created; it may contain outdated cultural descriptions and potentially offensive content. [Read more.](#)



## Alta Scene

<https://archives.whyte.org/en/permalink/artifactrbc.04.08>

Artist:	Clifford Foard Robinson (1916 – 1992, Canadian)
Title:	Alta Scene
Date:	1942
Medium:	ink on rice paper
Dimensions:	58.0 x 46.0 cm
Description:	a multi layered scene of rolling hills. In the foreground at the bottom of the image are 5 Canada geese standing in a field. Behind them are 3 cows and 3 horses among rows of crops. The mid ground has simple wooden buildings and a church at right. Larger buildings are in the row behind. A large blocky industrial building is at back right and a small group of tipis are at left. Pointed mountains make up the background under a sky with flowing lines.
Subject:	Alberta, Bow Valley, Morley, Mini thni, geese, cows, horses
Credit:	Gift of Ron Robinson, Nelson, 2023
Catalogue Number:	RbC.04.08

## Images



This material is presented as originally created; it may contain outdated cultural descriptions and potentially offensive content. [Read more.](#)



## Andre and A.Y. at Sunshine

<https://archives.whyte.org/en/permalink/artifactdak.03.04>

Artist:	Kathleen Frances Daly Pepper (1898 – 1994, Canadian)
Title:	Andre and A.Y. at Sunshine
Date:	1947
Medium:	graphite on paper
Dimensions:	29.0 x 36.5 cm
Description:	General colour: pencil on white. Two men in suits sitting at a table. The one in front faces right and is writing. The one behind faces more out and is reading. He wears glasses. Behind them in the upper left corner are book shelves. In the upper right corner is a lamp.
Subject:	figure male
Credit:	Purchased from Kathleen Frances Daly Pepper, 1970
Catalogue Number:	DaK.03.04
Notes:	Artistry Revealed: Peter Whyte, Catharine Robb Whyte and Their Contemporaries; June 17, 2018 to October 21, 2018

### Images



This material is presented as originally created; it may contain outdated cultural descriptions and potentially offensive content. [Read more.](#)



## Animal Sculpture

<https://archives.whyte.org/en/permalink/artifactaba.06.01>

Artist:	Abba
Title:	Animal Sculpture
Date:	c. 1952
Dimensions:	7.5 x 4.5 x 8.5 cm
Description:	A walrus is laying on its left side, head up. Incised flippers and facial features. "ABBA E7 416" is engraved on the base. There is also a white label with "395" attached to the base.
Subject:	animal walrus seal aquatic
Credit:	Gift of Pearl Evelyn Moore, Banff, 1979
Catalogue Number:	AbA.06.01

## Images



This material is presented as originally created; it may contain outdated cultural descriptions and potentially offensive content. [Read more.](#)



## Ansons near Calgary

<https://archives.whyte.org/en/permalink/artifactwyp.01.265>

Artist: Peter Whyte (1905 – 1966, Canadian)

Title: Ansons near Calgary

Date: 1944

Medium: oil on canvas

Dimensions: 27.6 x 35.0 cm

Subject: military  
transportation, airplane

Peter Whyte

Credit: Gift of Catharine Robb Whyte, O. C., Banff, 1979

Catalogue Number: WYP.01.265

Notes: Artistry Revealed: Peter Whyte, Catharine Robb Whyte and Their Contemporaries; June 17, 2018 to October 21, 2018

### Images



This material is presented as originally created; it may contain outdated cultural descriptions and potentially offensive content. [Read more.](#)



## Antelope head

<https://archives.whyte.org/en/permalink/artifactruc.03.06>

Artist:	Carl Clemens Moritz Rungius (1869 – 1959, American)
Title:	Antelope head
Date:	1946
Medium:	graphite on paper
Dimensions:	23.0 x 27.5 cm
Description:	A finely detailed drawing of an antelope head, the antelope is facing to the left
Subject:	animal, antelope
Credit:	Gift of Pearl Evelyn Moore, Banff, 1979
Catalogue Number:	RuC.03.06

## Images



This material is presented as originally created; it may contain outdated cultural descriptions and potentially offensive content. [Read more.](#)



## Ashcroft Country, B.C.

<https://archives.whyte.org/en/permalink/artifactlae.05.57>

Artist:	Ernest C. W Lamarque (1879 – 1970, Canadian)
Title:	Ashcroft Country, B.C.
Date:	1948
Medium:	watercolour on paper
Dimensions:	22.8 x 30.3 cm
Description:	See photo blhc: brhc: "E Lamarque"
Subject:	landscape mountains water urban, buildings Ernest Lamarque
Credit:	Gift of Ernest Lamarque (Estate), 1971
Catalogue Number:	LaE.05.57

### Images



This material is presented as originally created; it may contain outdated cultural descriptions and potentially offensive content. [Read more.](#)





## Aspen Trees near Massive

<https://archives.whyte.org/en/permalink/artifactwyc.01.126>

Artist:	Catharine Robb Whyte, O. C. (1906 – 1979, Canadian)
Title:	Aspen Trees near Massive
Date:	1945 – 1960
Medium:	oil on canvas
Dimensions:	28.0 x 35.5 cm
Description:	Looking out to Massive Mountain with aspen trees in foreground. Mount Brett and Pilot Mountain to the left of Massive Mountain.
Subject:	landscape Canadian Rockies Massive Mountain Mt. Brett Pilot Mountain
Credit:	Gift of Catharine Robb Whyte, O. C., Banff, 1979
Catalogue Number:	WYC.01.126

### Images



This material is presented as originally created; it may contain outdated cultural descriptions and potentially offensive content. [Read more.](#)



## Aspens at Muleshoe

<https://archives.whyte.org/en/permalink/artifactwyc.01.266>

Artist:	Catharine Robb Whyte, O. C. (1906 – 1979, Canadian)
Title:	Aspens at Muleshoe
Date:	1945 – 1960
Medium:	oil on canvas
Dimensions:	25.4 x 30.3 cm
Description:	<p>View of a row of seven trees in the foreground with a valley beyond. The base of seven thin trees can be seen with dark brown bark becoming ochre-coloured near the trees' lower branches. The trees' leaves are bright yellow. The trees cast shadows towards the viewer coloured grey-green, ochre and orange-red. The grass about the trees and in the valley is a yellow-green with touches of ochre, orange-red and grey-green. In the middleground, to the left of centre, zigzags a river (whose banks are defined by lines of brown and white). A forest of dark brown and dark green surrounds the river on the left and from behind. The background is an undefined area of green, indicating the base of the mountains lining the valley.</p>
Subject:	landscape mountain Canadian Rockies lake
Credit:	Gift of Catharine Robb Whyte, O. C., Banff, 1979
Catalogue Number:	WyC.01.266

### Images



This material is presented as originally created; it may contain outdated cultural descriptions and potentially offensive content. [Read more.](#)



## Aspens, Autumn

<https://archives.whyte.org/en/permalink/artifactwyc.01.183>

Artist:	Catharine Robb Whyte, O. C. (1906 – 1979, Canadian)
Title:	Aspens, Autumn
Date:	1945 – 1955
Medium:	oil on canvas
Dimensions:	28.0 x 22.8 cm
Description:	Yellow aspens.
Subject:	landscape Canadian Rockies botanical aspens
Credit:	Gift of Catharine Robb Whyte, O. C., Banff, 1979
Catalogue Number:	WyC.01.183

### Images



This material is presented as originally created; it may contain outdated cultural descriptions and potentially offensive content. [Read more.](#)



## Aspens near Muleshoe Lake

<https://archives.whyte.org/en/permalink/artifactwyc.01.389>

Artist:	Catharine Robb Whyte, O. C. (1906 – 1979, Canadian)
Title:	Aspens near Muleshoe Lake
Date:	1945 – 1965
Medium:	oil on canvas
Dimensions:	27.6 x 35.3 cm
Description:	The foreground is a hill in colours of autumn, yellow and brown with green coniferous trees. In the background is a mountain range, blue with green trees on the lower slopes in the centre of the picture.
Subject:	landscape Canadian Rockies mountain autumn
Credit:	Gift of Catharine Robb Whyte, O. C., Banff, 1979
Catalogue Number:	WyC.01.389

### Images



This material is presented as originally created; it may contain outdated cultural descriptions and potentially offensive content. [Read more.](#)



## Athabasca from Parkers Ridge

<https://archives.whyte.org/en/permalink/artifactwyc.01.382>

Artist:	Catharine Robb Whyte, O. C. (1906 – 1979, Canadian)
Title:	Athabasca from Parkers Ridge
Date:	1940 – 1960
Medium:	oil on canvas
Dimensions:	25.2 x 30.2 cm
Description:	In the foreground there are some trees on the right and one big one on the left. On the ground between the trees are different colors of weeds and flowers. In the background there are two mountains very triangle shaped. One is brown and the other on the left is smokey blue. The sky is a very pale blue.
Subject:	landscape Canadian Rockies
Credit:	Gift of Catharine Robb Whyte, O. C., Banff, 1979
Catalogue Number:	WyC.01.382

### Images



This material is presented as originally created; it may contain outdated cultural descriptions and potentially offensive content. [Read more.](#)



## Athabasca Glacier

<https://archives.whyte.org/en/permalink/artifactwyp.01.103>

Artist:	Peter Whyte (1905 – 1966, Canadian)
Title:	Athabasca Glacier
Date:	1940 – 1960
Medium:	oil on canvas
Dimensions:	30.5 x 25.5 cm
Description:	Colour: blue greys. The central image is a mass of blue grey ice which takes up the middle two quarters. The upper and lower quarters being white patches of snow on a brown grey ground.
Subject:	landscape mountain Canadian Rockies lake ice snow glacier
Credit:	Gift of Catharine Robb Whyte, O. C., Banff, 1968
Catalogue Number:	WyP.01.103

### Images



This material is presented as originally created; it may contain outdated cultural descriptions and potentially offensive content. [Read more.](#)



## Athabasca Glacier

<https://archives.whyte.org/en/permalink/artifactwyp.01.089>

Artist: Peter Whyte (1905 – 1966, Canadian)

Title: Athabasca Glacier

Date: 1940 – 1955

Medium: oil on canvas

Dimensions: 27.5 x 35 cm

Description: Colour: blue, green. Central image is a fan shaped glacier emptying into a pool of warm blue water surrounded by green grass along the bottom and a third the way up. Beyond the glacier to the left is rock mountain side which goes off the left side. In the upper right corner is sky which meets distant slopes.

Subject: landscape  
Canadian Rockies  
mountain  
lake  
glacier

Credit: Gift of Catharine Robb Whyte, O. C., Banff, 1968

Catalogue Number: WYP.01.089

### Images



This material is presented as originally created; it may contain outdated cultural descriptions and potentially offensive content. [Read more.](#)





## Athabasca Glacier

<https://archives.whyte.org/en/permalink/artifactwyp.02.002>

Artist:	Peter Whyte (1905 – 1966, Canadian)
Title:	Athabasca Glacier
Date:	1940 – 1950
Medium:	oil on canvas
Dimensions:	63.5 x 76.0 cm
Description:	Colour: blue, grey, yellow, red brown. A dead gnarled tree leans up the left side from a ground cover of yellow and red-brown bushes. At the right side are four evergreens. Behind and central is a huge glacier banked on either side by rock face. Across the top is clouds and blue sky. See sketches Wyp.01.537 and Wyp.01.158
Subject:	landscape Canadian Rockies mountain glacier
Credit:	Gift of Catharine Robb Whyte, O. C., Banff, 1968
Catalogue Number:	Wyp.02.002
Notes:	Artistry Revealed: Peter Whyte, Catharine Robb Whyte and Their Contemporaries; June 17, 2018 to October 21, 2018

### Images



This material is presented as originally created; it may contain outdated cultural descriptions and potentially offensive content. [Read more.](#)





## Athabasca Glacier

<https://archives.whyte.org/en/permalink/artifactwyc.01.287>

Artist:	Catharine Robb Whyte, O. C. (1906 – 1979, Canadian)
Title:	Athabasca Glacier
Date:	1940 – 1950
Medium:	oil on canvas
Dimensions:	25.4 x 30.3 cm
Description:	<p>View of a glacier beyond a rise of covered ground. In the foreground is an uneven hilltop covered in vegetation. Multi-coloured grasses (ochre, yellow-green, red-brown, dark brown), a group of dark evergreens (on the right), as well as, a solitary evergreen (on the left) are found on the hilltop. In the background is a wide valley with a large glacier. The glacier (coloured with white, grey, light blue and light brown) fills most of the lefthand side. The righthand side of the background contains a mass of dark grey and brown cliffs (with touches of grey-blue and ochre). Along the upper edge of the picture (above the glacier) are loose brushstrokes of blue, white, brown and blue-grey. These marks suggest distant cliffs among ice and clouds.</p>
Subject:	landscape mountain Canadian Rockies lake
Credit:	Gift of Catharine Robb Whyte, O. C., Banff, 1979
Catalogue Number:	WYC.01.287

### Images



This material is presented as originally created; it may contain outdated cultural descriptions and potentially offensive content. [Read more.](#)



## Athabasca Glacier

<https://archives.whyte.org/en/permalink/artifactwyp.01.104>

Artist: Peter Whyte (1905 – 1966, Canadian)  
Title: Athabasca Glacier  
Date: 1940 – 1960  
Medium: oil on canvas  
Dimensions: 25.5 x 29.9 cm  
Subject: landscape  
glacier  
Canadian rockies  
Credit: Gift of Catharine Robb Whyte, O. C., Banff, 1979  
Catalogue Number: WYP.01.104

### Images



This material is presented as originally created; it may contain outdated cultural descriptions and potentially offensive content. [Read more.](#)



## Athabasca Glacier, Columbia Icefields

<https://archives.whyte.org/en/permalink/artifactrta.02.01>

Artist:	Andreas Roth
Title:	Athabasca Glacier, Columbia Icefields
Date:	1941
Medium:	oil paint on board
Dimensions:	43.5 x 62.0 cm
Description:	Mountain landscape with mountains topped with glaciers in background. Glacial tongue with river leading away from it in the centre of the painting. Wildflowers and trees in foreground. Bottom left corner is "Andreas Roth. 1941"
Subject:	mountains columbia icefield athabasca Banff National Park
Credit:	Gift of Robert Crosby Family, Banff, 1998
Catalogue Number:	RtA.02.01

### Images



This material is presented as originally created; it may contain outdated cultural descriptions and potentially offensive content. [Read more.](#)



## Athabasca Glacier, Sunwapta Lake

<https://archives.whyte.org/en/permalink/artifactwyp.01.320>

Artist:	Peter Whyte (1905 – 1966, Canadian)
Title:	Athabasca Glacier, Sunwapta Lake
Date:	1945 – 1960
Medium:	oil on canvas
Dimensions:	25.0 x 30.1 cm
Subject:	landscape Canadian Rockies glacier lake
Credit:	Gift of Catharine Robb Whyte, O. C., Banff, 1979
Catalogue Number:	WyP.01.320

### Images



This material is presented as originally created; it may contain outdated cultural descriptions and potentially offensive content. [Read more.](#)