



#4 Wildfires

<https://archives.whyte.org/en/permalink/artifactgur.02.01>

Artist: Robert Guest (1938 – 2017, Canadian)

Title: #4 Wildfires

Date: 2011

Medium: oil on wood

Dimensions: 19.2 x 24.3 cm

Description: A landscape oil painting, on board, of forest on fire. The painting is dominated by one central tree. Fallen tree on fire diagonally across painting in foreground. Background is thick forest on fire and some blue sky with orange smoke. Primarily red, green, blue and yellow color palette. Au verso several stickers. At top white with black printing "THIS PAINTING HAS BEEN DONATED TO THE PERMANENT COLLECTION OF THE WHYTE MUSEUM OF THE CANADIAN ROCKIES AT BANFF. IT IS A GIFT FROM THE ARTIST, ROBERT GUEST OF GRANDE CACHE. 2012." Sticker middle right is yellow with black print, "CAUTION! HELP AVOID FADING: Display original artwork out of direct sunlight or other strong light, and away from heat or moist conditions!" Bottom left label, white with black printing, "#4. Wildfires./2011" NEW OILPAINT SERIES - 8X10 " PANELS AT GRANDE CACHE, BY R. GUEST." Bottom left sticker, blue with black print, see artist bio.

Subject: landscape

forest fire

Robert Guest

Credit: Purchased from Robert Guest, Grande Cache, 2012

Catalogue Number: GuR.02.01

Images



This material is presented as originally created; it may contain outdated cultural descriptions and potentially offensive content. [Read more.](#)



Above Bow Falls

<https://archives.whyte.org/en/permalink/artifactgyh.02.15>

Artist:	Henry George Glyde (1906 – 1998, Canadian)
Title:	Above Bow Falls
Date:	1952
Medium:	oil on board
Dimensions:	31.0 x 39.0 cm
Description:	A low and wide, white and blue waterfall between gray rocks with evergreen trees mountains in the background.
Subject:	Banff Bow Falls Rocky Mountains water waterfall
Credit:	Gift of Fred Burghardt, Edmonton, 2018
Catalogue Number:	GyH.02.15

Images



This material is presented as originally created; it may contain outdated cultural descriptions and potentially offensive content. [Read more.](#)

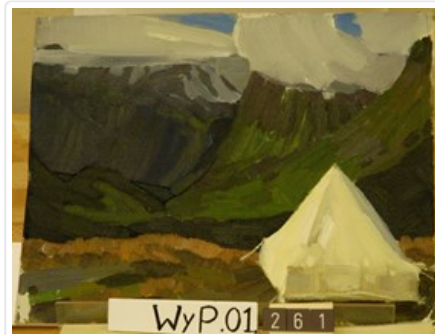


Above Geiranger Fjord, Norway

<https://archives.whyte.org/en/permalink/artifactwyp.01.261>

Artist:	Peter Whyte (1905 – 1966, Canadian)
Title:	Above Geiranger Fjord, Norway
Date:	1938
Medium:	oil on canvas
Dimensions:	27.2 x 34.7 cm
Subject:	landscape mountain camp
Credit:	Gift of Catharine Robb Whyte, O. C., Banff, 1979
Catalogue Number:	WyP.01.261

Images



This material is presented as originally created; it may contain outdated cultural descriptions and potentially offensive content. [Read more.](#)



Above the West Road

<https://archives.whyte.org/en/permalink/artifactgyh.02.07>

Artist: Henry George Glyde (1906 – 1998, Canadian)

Title: Above the West Road

Date: n.d.

Medium: oil on masonite

Dimensions: 33 x 40.5 cm

Description: The mountain landscape is painted in shades of brown, yellow, grey and red. The sky is rendered in a light blue with dark grey clouds on the left. The foreground encompasses yellow rolling hills with suggestions of trees on the lower right. Between the mountains and the foreground is a line of burgundy. On the back "Above the West Road Banff 24 H. G. Glyde."

Subject: landscape
Canadian Rockies
mountains

Credit: Gift of Henry George Glyde, Victoria, 1997

Catalogue Number: GyH.02.07

Images



This material is presented as originally created; it may contain outdated cultural descriptions and potentially offensive content. [Read more.](#)



Abraham Lake #3

<https://archives.whyte.org/en/permalink/artifactgrl.01.07>

Artist:	Les Graff (1936 – , Canadian)
Title:	Abraham Lake #3
Date:	2000 – 2000
Medium:	oil on masonite board
Dimensions:	40.5 x 40.5 cm
Description:	An oil sketch of a lake landscape. The primary colours used are green, grey, blue and brown. The sky is dominated with thick grey strokes of colour. Surrounding the water at the top and bottom are thick strokes of green. The blue of the water is a streak across the middle of the work. The artist's signature is in the brhc in green paint.
Subject:	landscape lake
Credit:	Gift of Les Graff, Bashaw, 2006
Catalogue Number:	Grl.01.07

Images



This material is presented as originally created; it may contain outdated cultural descriptions and potentially offensive content. [Read more.](#)



Abraham Lake/East

<https://archives.whyte.org/en/permalink/artifactgrl.01.17>

Artist:	Les Graff (1936 – , Canadian)
Title:	Abraham Lake/East
Date:	2001 – 2001
Medium:	oil on masonite board
Dimensions:	40 x 40.5 cm
Description:	An oil sketch of a mountain landscape. The primary colours used are blue, orange, red and brown. The image is composed of a mountain range in the background, with a body of water and a segment of land in the foreground. The artist's signature is in the brhc in grey paint. Au verso, written in black ink in the trhc, "45/W".
Subject:	landscape mountain lake
Credit:	Gift of Les Graff, Bashaw, 2006
Catalogue Number:	GrL.01.17

Images



This material is presented as originally created; it may contain outdated cultural descriptions and potentially offensive content. [Read more.](#)



Across the North Saskatchewan River/Shadows

<https://archives.whyte.org/en/permalink/artifactgrl.01.28>

Artist:	Les Graff (1936 – , Canadian)
Title:	Across the North Saskatchewan River/Shadows
Date:	2003 – 2003
Medium:	oil on masonite board
Dimensions:	35.6 x 40.7 cm
Description:	An oil sketch of a landscape. The primary colours used are green, grey, purple and beige. The upper third of the piece is in green, red and beige, with the shadows of the trees depicted as red lines. The majority of the canvas centre is grey, with a variety of colours on the right centre. The artist's signature is in the blhc in purple paint. Au verso, written in black ink in the tlhc, "47/R".
Subject:	landscape river shadow
Credit:	Gift of Les Graff, Bashaw, 2007
Catalogue Number:	GrL.01.28

Images



This material is presented as originally created; it may contain outdated cultural descriptions and potentially offensive content. [Read more.](#)



Aged Larch

<https://archives.whyte.org/en/permalink/artifactwyc.01.289>

Artist:	Catharine Robb Whyte, O. C. (1906 – 1979, Canadian)
Title:	Aged Larch
Date:	1935 – 1955
Medium:	oil on canvas
Dimensions:	25.4 x 30.3 cm
Description:	<p>To the right of centre, the lower trunk of a large larch tree is visible. The trunk is outlined in black, and coloured brown and blue-grey (with touches of ochre and red-brown). In the upper half of the sketch, a few small branches, with brushstrokes indicating groups of yellow needles, are growing from the tree's trunk. In the middleground are groups of younger (smaller) yellow trees, with tall dark green evergreens behind them. Beyond the trees is a flat area coloured tan-green.</p>
Subject:	landscape mountain Canadian Rockies
Credit:	Gift of Catharine Robb Whyte, O. C., Banff, 1979
Catalogue Number:	WyC.01.289

Images



This material is presented as originally created; it may contain outdated cultural descriptions and potentially offensive content. [Read more.](#)



Airfield

<https://archives.whyte.org/en/permalink/artifactcha.02.03>

Artist:	William Abbott Cheever (1908 – 1986, American)
Title:	Airfield
Date:	n.d.
Medium:	oil on board
Dimensions:	25.3 x 35.3 cm
Description:	Rainy airfield with two biplanes, one with open cockpit, one with closed.
Subject:	military airplane person pilot W.A. Cheever
Credit:	Gift of Catharine Robb Whyte, O. C., Banff, 1979
Catalogue Number:	ChA.02.03

Images



This material is presented as originally created; it may contain outdated cultural descriptions and potentially offensive content. [Read more.](#)



Aklavik, N.W.T.

<https://archives.whyte.org/en/permalink/artifactbpw.02.02>

Artist:	William Bonnetplume (1946 – 2001, Canadian)
Title:	Aklavik, N.W.T.
Date:	prior to 1977
Medium:	oil on canvas board
Dimensions:	35.6 x 45.6 cm
Description:	General colour: blue with green, yellow, brown. A figure, sled and team of four dogs fills lower right quarter of picture. A broad crack in the frozen lake runs up from the center at the bottom and disappears into the horizon of trees. The far shore and mountains beyond start two thirds up the picture.
Subject:	animal, dogteam figure, man man, Inuit landscape, winter
Credit:	Purchased from William Bonnetplume, 1978
Catalogue Number:	BpW.02.02

Images



This material is presented as originally created; it may contain outdated cultural descriptions and potentially offensive content. [Read more.](#)



Alasi Tukalak Carving, Povungnituk

<https://archives.whyte.org/en/permalink/artifactwyc.01.248>

Artist:	Catharine Robb Whyte, O. C. (1906 – 1979, Canadian)
Title:	Alasi Tukalak Carving, Povungnituk
Date:	1968
Medium:	oil on canvas
Dimensions:	25.4 x 30.3 cm
Description:	A solitary woman is kneeling in the foreground clutching a grey object in her left hand and pointing to it with her right hand. The woman is seen in profile. Her skin is brown and her hair is black. She wears a blue jacket over an orange-pink skirt. On her head is a red-pink scarf with green details. A light blue-grey building is found in the upper left corner. Cast shadows are blue.
Subject:	figure, female
Credit:	Gift of Catharine Robb Whyte, O. C., Banff, 1979
Catalogue Number:	WYC.01.248

Images



This material is presented as originally created; it may contain outdated cultural descriptions and potentially offensive content. [Read more.](#)



Alberta: Snow and Tar Sands

<https://archives.whyte.org/en/permalink/artifactans.02.01>

Artist:	Stephen Andrews (1922 – 1995, Canadian)
Title:	Alberta: Snow and Tar Sands
Date:	1977
Medium:	oil on canvas
Dimensions:	121.5 x 123.0 cm
Description:	Alberta flag emblem and rolling foothills and wheat fields. Opaque white paint drips close to bottom edge of painting.
Subject:	landscape Alberta symbol Alberta provincial emblem
Credit:	Gift of Stephen Andrews, Banff, 1977
Catalogue Number:	AnS.02.01

Images



This material is presented as originally created; it may contain outdated cultural descriptions and potentially offensive content. [Read more.](#)



Alexander River

<https://archives.whyte.org/en/permalink/artifactwyp.01.150>

Artist: Peter Whyte (1905 – 1966, Canadian)

Title: Alexander River

Date: 1929

Medium: oil on canvas

Dimensions: 30.5 x 28 cm

Description: Colour: green, purple. Across the bottom and angling up left is grass with trees, three at left and two at right, along the river's edge. The green river comes in from the right side, goes left and then up right side to disappear into the far shore of dark trees. The right shore juts in from that side, halfway up. In the background across the top are purple mountains. Five peaks meet a green grey sky.

Subject: landscape
Canadian Rockies
river

Credit: Gift of Catharine Robb Whyte, O. C., Banff, 1975

Catalogue Number: Wyp.01.150

Images



This material is presented as originally created; it may contain outdated cultural descriptions and potentially offensive content. [Read more.](#)



Alleuvial Fan, Bow Lake

<https://archives.whyte.org/en/permalink/artifactwyp.01.245>

Artist: Peter Whyte (1905 – 1966, Canadian)

Title: Alleuvial Fan, Bow Lake

Date: 1945 – 1960

Medium: oil on canvas

Dimensions: 27.6 x 35.1 cm

Subject: landscape
Canadian Rockies
mountain
lake
glacier

Credit: Gift of Catharine Robb Whyte, O. C., Banff, 1979

Catalogue Number: WYP.01.245

Images



This material is presented as originally created; it may contain outdated cultural descriptions and potentially offensive content. [Read more.](#)



Aloha Tower, Hawaii

<https://archives.whyte.org/en/permalink/artifactwyp.01.047>

Artist: Peter Whyte (1905 – 1966, Canadian)

Title: Aloha Tower, Hawaii

Date: 1934

Medium: oil on canvas

Dimensions: 27.5 x 35 cm

Description: Colour: blue, white, grey. At the right side is a dock. Two boats are tied up at the end of it. Across the picture on the other side of the lake are low buildings and to the left a building with a tower on the corner of it. Dark green slopes rise up to the right from behind. Mountains can be seen just behind them. The sky is layers of grey and fills the upper half.

Subject: landscape
architecture
urban
mountain
seascape
transportation
Pacific
Hawaii

Credit: Gift of Catharine Robb Whyte, O. C., Banff, 1968

Catalogue Number: WYP.01.047

Notes: Artistry Revealed: Peter Whyte, Catharine Robb Whyte and Their Contemporaries; June 17, 2018 to October 21, 2018

Images



This material is presented as originally created; it may contain outdated cultural descriptions and potentially offensive content. [Read more.](#)



Alpine Club Cabin, Assiniboine

<https://archives.whyte.org/en/permalink/artifactwyp.01.061>

Artist:	Peter Whyte (1905 – 1966, Canadian)
Title:	Alpine Club Cabin, Assiniboine
Date:	1937
Medium:	oil on canvas
Dimensions:	27.5 x 35 cm
Description:	Colour: blue. A snow scene. Two trees stand center and left reaching to the top of the picture. Another two trees grow on the right side. Between these is a snow covered log cabin. Trees can be seen vaguely in the distance. The sky behind is warm blue and fills the upper third.
Subject:	landscape mountain Canadian Rockies winter architecture rural
Credit:	Gift of Catharine Robb Whyte, O. C., Banff, 1968
Catalogue Number:	WyP.01.061
Notes:	Artistry Revealed: Peter Whyte, Catharine Robb Whyte and Their Contemporaries; June 17, 2018 to October 21, 2018

Images



This material is presented as originally created; it may contain outdated cultural descriptions and potentially offensive content. [Read more.](#)



Alpine Rock Garden

<https://archives.whyte.org/en/permalink/artifactwyc.01.240>

Artist:	Catharine Robb Whyte, O. C. (1906 – 1979, Canadian)
Title:	Alpine Rock Garden
Date:	1930 – 1950
Medium:	oil on canvas on aluminum
Dimensions:	25.4 x 30.3 cm
Description:	The foreground is predominant in this sketch, with dabs of bright red vegetation in the lower right quarter of the picture. Three groupings of trees, placed along a line in the upper half of the sketch, frame and divide the background into two sections. The left background section contains a peak with sunlight illuminating it from the left-hand side. The right background section contains a large white cloud, and a small triangular peak partially hidden by the grasses growing in the foreground.
Subject:	landscape mountain Canadian Rockies
Credit:	Gift of Catharine Robb Whyte, O. C., Banff, 1979
Catalogue Number:	WyC.01.240

Images



This material is presented as originally created; it may contain outdated cultural descriptions and potentially offensive content. [Read more.](#)



Alpine Valley

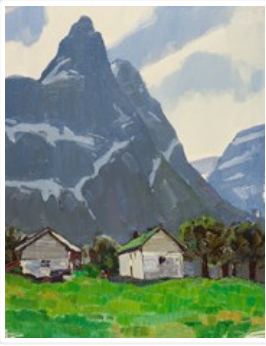
<https://archives.whyte.org/en/permalink/artifactwyc.01.334>

Artist:	Catharine Robb Whyte, O. C. (1906 – 1979, Canadian)
Title:	Alpine Valley
Date:	1930 – 1931
Medium:	oil on canvas
Dimensions:	12.7 x 17.7 cm
Description:	Patch of dark green blc, blue mountains with brush strokes of blue-green suggesting a green area below slopes, cloudy sky in light blue and off white.
Subject:	landscape mountain Canadian Rockies
Credit:	Gift of Catharine Robb Whyte, O. C., Banff, 1979
Catalogue Number:	WyC.01.334

Images



This material is presented as originally created; it may contain outdated cultural descriptions and potentially offensive content. [Read more.](#)

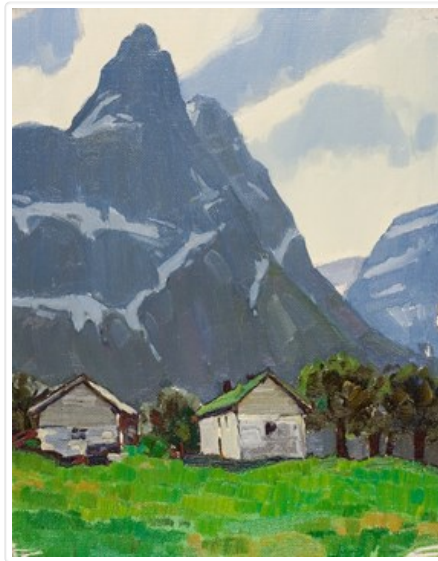


Andalsnas Valley, Norway

<https://archives.whyte.org/en/permalink/artifactwyp.01.260>

Artist:	Peter Whyte (1905 – 1966, Canadian)
Title:	Andalsnas Valley, Norway
Date:	1938
Medium:	oil on canvas
Dimensions:	34.8 x 27.1 cm
Subject:	landscape ;mountains architecture building rural
Credit:	Gift of Catharine Robb Whyte, O. C., Banff, 1979
Catalogue Number:	WyP.01.260

Images



This material is presented as originally created; it may contain outdated cultural descriptions and potentially offensive content. [Read more.](#)



Andalsnes, Norway

<https://archives.whyte.org/en/permalink/artifactwyp.01.016>

Artist:	Peter Whyte (1905 – 1966, Canadian)
Title:	Andalsnes, Norway
Date:	1938
Medium:	oil on canvas
Dimensions:	35 x 27.5 cm
Description:	Colour: grey, blue, brown. In the lower area to the left side is a brown slope. In the middle area there are three buildings; one left of center, two right of center. To the right side is a grey snow slope. Behind the houses across the picture is an abrupt rock face. Snow and rock slopes rise up to the left and right of it. Sky is in the upper right area.
Subject:	landscape mountain winter architecture rural
Credit:	Gift of Catharine Robb Whyte, O. C., Banff, 1968
Catalogue Number:	WyP.01.016

Images



This material is presented as originally created; it may contain outdated cultural descriptions and potentially offensive content. [Read more.](#)