



### Tea Jar

<https://archives.whyte.org/en/permalink/artifact104.19.0033>

Title:	Tea Jar
Date:	1870 – 1935
Material:	ceramic; ivory
Dimensions:	8.1 x 6.0 cm
Description:	Temmoku glaze, iron content, producing creamy light brown to rust and dark brown shadings, hand thrown jar. Manipulation of wire used to remove vessel from wheel has left a shell like pattern on foot. Indent and two vertical grooves on outside of vessel. 3 notes in jar (1) yellow sticker "72/2", (2) red sticker "in yellow 72/2" in E.S. Morse writing and (3) also Morse's writing (?) Seto 1700 old specimen. Small button like ivory lid, lid is missing a foil liner.
Subject:	households tea ceremony Edward S. Morse
Credit:	Gift of Catharine Robb Whyte, O. C., Banff, 1979
Catalogue Number:	104.19.0033

### Images



This material is presented as originally created; it may contain outdated cultural descriptions and potentially offensive content. [Read more.](#)



## Tea Jar

<https://archives.whyte.org/en/permalink/artifact104.19.0034>

Title:	Tea Jar
Date:	1870 – 1935
Material:	ceramic; ivory
Dimensions:	6.8 x 5.7 cm
Description:	Temmoku glaze, iron content, producing creamy light brown to rust and dark brown shadings, hand thrown jar. Manipulation of wire used to remove vessel from wheel has left a shell like pattern on foot. Rounded to almost spherical. Ivory lidded and lid is missing a foil liner. Label inside says "Satsuma 1700", additional gold lustre on foot and near base, denotes wealthy ownership.
Subject:	households tea ceremony Edward S. Morse
Credit:	Gift of Catharine Robb Whyte, O. C., Banff, 1979
Catalogue Number:	104.19.0034

## Images



This material is presented as originally created; it may contain outdated cultural descriptions and potentially offensive content. [Read more.](#)



## Tea Jar

<https://archives.whyte.org/en/permalink/artifact104.19.0035>

Title:	Tea Jar
Date:	1870 – 1935
Material:	ceramic; ivory
Dimensions:	8.3 x 5.3 cm
Description:	Temmoku glaze, iron content, producing creamy light brown with very dark brown shading, large unglazed area near base. Manipulation of wire used to remove vessel from wheel has left a shell like pattern on foot. Cylindrical shape, ivory lidded and lid is missing the foil liner and small ivory knob.
Subject:	households tea ceremony Edward S. Morse
Credit:	Gift of Catharine Robb Whyte, O. C., Banff, 1979
Catalogue Number:	104.19.0035

## Images



This material is presented as originally created; it may contain outdated cultural descriptions and potentially offensive content. [Read more.](#)



## Tea Jar

<https://archives.whyte.org/en/permalink/artifact104.19.0037>

Title:	Tea Jar
Date:	1870 – 1935
Material:	ivory; ceramic
Dimensions:	5.7 x 9.0 cm
Description:	Temmoku glaze, iron content, producing creamy light brown to dark brown streaking of glaze, also contains golden yellow colouring. Hand thrown with circular, small wheel mark on base. Ivory lidded, lid has foil liner and ivory in lid has circular decoration as well as flaws which include minor cracks and one large, 2.0 cm. crack. The squat shape is called "TAIKAI". Probably, Japanese calligraphy on label stuck to inside of rim reads "Taikai" "#7".
Subject:	households tea ceremony Edward S. Morse
Credit:	Gift of Catharine Robb Whyte, O. C., Banff, 1979
Catalogue Number:	104.19.0037

## Images



This material is presented as originally created; it may contain outdated cultural descriptions and potentially offensive content. [Read more.](#)



## Tea Jar

<https://archives.whyte.org/en/permalink/artifact104.19.0038>

Title:	Tea Jar
Date:	1870 – 1935
Material:	ivory; ceramic
Dimensions:	8.1 x 6.5 cm
Description:	Temmoku glaze, iron content, producing creamy light brown to golden, rust and dark brown shadings. Manipulation of wire used to remove vessel from wheel has left a shell like pattern on foot, rounded shape. Ivory lid is missing its foil liner. Chipped rim 1.2 x .6 cm. missing.
Subject:	households tea ceremony Edith Morse Robb Edward S. Morse
Credit:	Gift of Catharine Robb Whyte, O. C., Banff, 1979
Catalogue Number:	104.19.0038

## Images



This material is presented as originally created; it may contain outdated cultural descriptions and potentially offensive content. [Read more.](#)



## Tea Jar

<https://archives.whyte.org/en/permalink/artifact104.19.0039>

Title:	Tea Jar
Date:	1870 – 1935
Material:	ivory; ceramic
Dimensions:	4.8 x 4.2 cm
Description:	Possibly transparent or temmoku glaze, iron content, fairly consistent dark brown glaze colour over dark brown clay. Manipulation of wire used to remove vessel from wheel has left a shell like pattern on foot. Urn shaped. Ivory lid missing knob and foil liner deteriorating. Gourd shape.
Subject:	households tea ceremony Edith Morse Robb Edward S. Morse
Credit:	Gift of Catharine Robb Whyte, O. C., Banff, 1979
Catalogue Number:	104.19.0039

## Images



This material is presented as originally created; it may contain outdated cultural descriptions and potentially offensive content. [Read more.](#)



## Tea Jar

<https://archives.whyte.org/en/permalink/artifact104.19.0060>

Title:	Tea Jar
Date:	1850 – 1900
Material:	wood; metal
Dimensions:	7.1 x 6.5 cm
Description:	Footed, bulbous, lidded container with copper lining, green from corrosion, and gold black speckled background throughout, with gold lacquer floral vine decoration through. Lid has knob and sits inside short jar rim.
Subject:	households tea ceremony Japanese Edith Morse Robb Edward S. Morse
Credit:	Gift of Catharine Robb Whyte, O. C., Banff, 1979
Catalogue Number:	104.19.0060

## Images



This material is presented as originally created; it may contain outdated cultural descriptions and potentially offensive content. [Read more.](#)



## Tea Jar

<https://archives.whyte.org/en/permalink/artifact104.19.0036>

Title:	Tea Jar
Date:	1870 – 1935
Material:	ivory; ceramic
Dimensions:	9.2 x 5.0 cm
Description:	Tammoku glaze, iron content, producing creamy light brown to dark brown shading. Large rust coloured dribble of glaze down the outside. Manipulation of wire used to remove vessel from wheel has left a shell like pattern on foot, cylindrical shape, ivory lidded and lid has liner. Rim chipped 4.0 x .2 cm. loss.
Subject:	households tea ceremony Edward S. Morse
Credit:	Gift of Catharine Robb Whyte, O. C., Banff, 1979
Catalogue Number:	104.19.0036

## Images



This material is presented as originally created; it may contain outdated cultural descriptions and potentially offensive content. [Read more.](#)





## Tea Jar

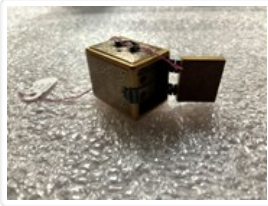
<https://archives.whyte.org/en/permalink/artifact104.19.0073>

Title:	Tea Jar
Date:	1870 – 1890
Dimensions:	7.2 x 5.2 cm
Description:	Rounded, wooden lidded circular jar with relief handles, which narrows up to neck from base diameter of 5.2 to 2.8 cm. neck. Brown iron glaze created rust coloured inside and outside, stamp on bottom, trimmed foot. Tea for tea ceremony Writing: Dai Nippon
Subject:	tea ceremony Japanese
Credit:	Gift of Catharine Robb Whyte, O. C., Banff, 1979
Catalogue Number:	104.19.0073

## Images



This material is presented as originally created; it may contain outdated cultural descriptions and potentially offensive content. [Read more.](#)

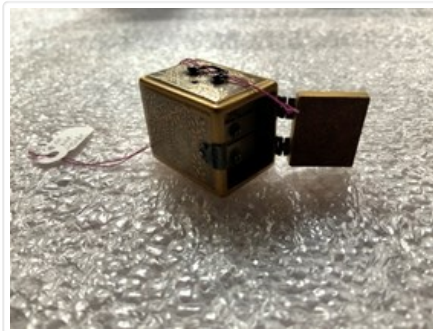


## Trinket Box

<https://archives.whyte.org/en/permalink/artifact108.05.0058>

Title:	Trinket Box
Date:	1870 – 1890
Material:	wood; metal
Dimensions:	2.2 x 2.0 x 2.9 cm
Description:	miniature lacquered wood box with handle on top side. Hinged door on front with sliding clasp, behind door are three drawers, each having a circular metal pull, each drawer interior speckled gold lustre over black. Each drawer face diamond shaped design. Exterior of box is black ground with gold lacquer speckling on door interior and base. Hanging flower lacquer design over surface of box, bottom of box has large blossom design. Door clasp fragile. Inset tacks on box top which serve as handle rests.
Subject:	households decorative miniatures Japanese Edward S. Morse Edith Morse Robb
Credit:	Gift of Catharine Robb Whyte, O. C., Banff, 1979
Catalogue Number:	108.05.0058

## Images



This material is presented as originally created; it may contain outdated cultural descriptions and potentially offensive content. [Read more.](#)



## Trinket Box

<https://archives.whyte.org/en/permalink/artifact102.04.0200>

Title:	Trinket Box
Date:	1850 – 1900
Material:	wood
Dimensions:	6.3 x 13.0 cm
Description:	A lathe-turned round-dish, flat-bottomed box with a domed, lapping lid which fits flushly over a flange on the box body. Box and lid are painted a boxcar red and decorated with designs of circles and flowers, varnish over paint has oxidized. Interior of box has been painted a dark green.
Subject:	households decorative
Credit:	Gift of Catharine Robb Whyte, O. C., Banff, 1979
Catalogue Number:	102.04.0200

## Images



This material is presented as originally created; it may contain outdated cultural descriptions and potentially offensive content. [Read more.](#)



## Trinket Box

<https://archives.whyte.org/en/permalink/artifact102.04.0209>

Title:	Trinket Box
Date:	1870 – 1920
Material:	wood; metal
Dimensions:	9.5 x 16.0 x 24.0 cm
Description:	An elaborately-carved, squat rectangular wooden box on four ball feet with a lockable lid. The four walls of the box have an elaborately carved floral, on the back panel a single dog running is centred, and on the ends a bird each is seen perched in the foliage. The top of the box presents a scene from "the life of the Hindu Gods," five figures one of them dog-faced, in formal pose, and on either side of that group are two fish-tailed men. A 10 cm. crack runs from the front left foot on the box base, and a crack 22 cm. long runs around the corner of the top left of the lid.
Subject:	households decorative
Credit:	Gift of Catharine Robb Whyte, O. C., Banff, 1979
Catalogue Number:	102.04.0209

## Images



This material is presented as originally created; it may contain outdated cultural descriptions and potentially offensive content. [Read more.](#)



## Trinket Box

<https://archives.whyte.org/en/permalink/artifact102.04.0220>

Title:	Trinket Box
Date:	1870 – 1930
Material:	ceramic
Dimensions:	6.2 x 12.7 cm
Description:	Shallow, circular, round, lidded container, white slip with indigo glaze dominant, gold lustre border trim and possibly decal, continuous design around bowl exterior and at lid rim. Decal design is multi-coloured fruit and leaf decoration; "2814" written on base.
Subject:	Whyte home accessories trinkets households decorative collectables
Credit:	Gift of Catharine Robb Whyte, O. C., Banff, 1979
Catalogue Number:	102.04.0220

## Images



This material is presented as originally created; it may contain outdated cultural descriptions and potentially offensive content. [Read more.](#)



## Trinket Box

<https://archives.whyte.org/en/permalink/artifact102.04.0250>

Title:	Trinket Box
Date:	1870 – 1935
Material:	ceramic
Dimensions:	4.0 x 8.2 cm
Description:	Hand thrown, trim-footed dish with well-fitting lid. Ivory crackled glaze with multi-coloured enamel and gold lustre borders, and gold, green, red flowering bush with fence on lid. Small chip out of inside bowl rim.
Subject:	households decorative miniatures E. S. Morse
Credit:	Gift of Catharine Robb Whyte, O. C., Banff, 1979
Catalogue Number:	102.04.0250

## Images



This material is presented as originally created; it may contain outdated cultural descriptions and potentially offensive content. [Read more.](#)



## Trinket Box

<https://archives.whyte.org/en/permalink/artifact102.04.0252>

Title:	Trinket Box
Date:	1870 – 1890
Material:	wood
Dimensions:	7.9 x 6.2 x 6.8 cm
Description:	Three-tiered, lidded box set. Red gold speckled lacquer interiors. Exterior design continues around the box. Landscape with herons in landscape, as well as a total of seven circular tri-leaf decorations. Box appears to be black base with gold and silver decoration and speckling. Lacquer cracked on base where it was possibly dropped at one time, base has small chip on one corner.
Subject:	households decorative Japanese E. S. Morse
Credit:	Gift of Catharine Robb Whyte, O. C., Banff, 1979
Catalogue Number:	102.04.0252

## Images



This material is presented as originally created; it may contain outdated cultural descriptions and potentially offensive content. [Read more.](#)



## Trinket Box

<https://archives.whyte.org/en/permalink/artifact102.04.0253>

Title:	Trinket Box
Date:	1870 – 1920
Material:	wood
Dimensions:	5.3 x 11.2 x 15.5 cm
Description:	Lidded, lightweight box. Lid sits flush with base on box rim. Pale coloured grass veneer on sides. Lid top well-designed in veneer zig-zag geometric in multi-earth tones as well as blues, greens, purples. Case for 102.04.0254.
Subject:	households decorative;
Credit:	Gift of Catharine Robb Whyte, O. C., Banff, 1979
Catalogue Number:	102.04.0253

## Images



This material is presented as originally created; it may contain outdated cultural descriptions and potentially offensive content. [Read more.](#)





## Trinket Box

<https://archives.whyte.org/en/permalink/artifact102.04.0254>

Title:	Trinket Box
Date:	1870 – 1920
Material:	wood
Dimensions:	4.2 x 9.3 x 13.7 cm
Description:	Lidded, lightweight box. Lid sits flush with bass on box rim. Pale coloured grass veneer on sides. Lid top well-designed in veneer, symmetrical, hexagonal diamond shaped design. Earth tones with yellow and purple accents. This box is contents of 102.04.0253.
Subject:	households decorative
Credit:	Gift of Catharine Robb Whyte, O. C., Banff, 1979
Catalogue Number:	102.04.0254

## Images



This material is presented as originally created; it may contain outdated cultural descriptions and potentially offensive content. [Read more.](#)



## Trinket Box

<https://archives.whyte.org/en/permalink/artifact102.04.0256>

Title:	Trinket Box
Date:	1870 – 1890
Material:	wood; shell
Dimensions:	5.7 x 5.0 x 8.9 cm
Description:	Lacquered wood box with tortoise shell veneer applied. Handle on top of box and hinged door on front which has sliding clasp. Behind door are three tortoise shell veneered drawers with circular, metal pulls. Base of box black lacquer. Back panel separating from underlying wood. Each of side panels cracked throughout length. Front panel (door) also cracked lacquer loss at base at front of box and at bottom back corners of box. Note inset tacks on box top which serve as rests for handle. Top hinge bracket on door missing small tack.
Subject:	households decorative Japanese E. S. Morse
Credit:	Gift of Catharine Robb Whyte, O. C., Banff, 1979
Catalogue Number:	102.04.0256

## Images



This material is presented as originally created; it may contain outdated cultural descriptions and potentially offensive content. [Read more.](#)



## Trinket Box

<https://archives.whyte.org/en/permalink/artifact102.04.0257>

Title:	Trinket Box
Date:	1870 – 1890
Material:	wood; shell
Dimensions:	6.4 x 6.0 x 10.0 cm
Description:	Lacquered wood box with tortoiseshell veneer applied. Handle on top of box and hinged door on front with sliding clasp. Behind door are three tortoise shell veneer with gold floral lacquer decorated drawers, each having a circular metal pull. Base of box black lacquer, base carries round sticker "JWH" monogram. Gold lacquer fence and floral design on all box faces with exception of base. Door front tortoise shell cracked and separating from wood backing. Entire back panel of box, including wood backing, separating from box; right panel tortoiseshell also separating. Left side panel, wood included, is separating from box. Lacquer loss at bottom right corner at front of box; note inset tacks on box top which serve as handle rests.
Subject:	households decorative Japanese E. S. Morse;
Credit:	Gift of Catharine Robb Whyte, O. C., Banff, 1979
Catalogue Number:	102.04.0257

## Images



This material is presented as originally created; it may contain outdated cultural descriptions and potentially offensive content. [Read more.](#)



## Trinket Box

<https://archives.whyte.org/en/permalink/artifact102.04.0308>

Title:	Trinket Box
Date:	1870 – 1890
Material:	wood
Dimensions:	5.5 x 6.3 cm
Description:	A spherical container flattened at the top and bottom. Top lifts off lip on the bottom half at the middle. Round lacquered tray sits inside lip. Lathe-turned, incised ring texture on outside is burgundy colour with yellow in the recesses of the rings. Interior of tray lacquered black.
Subject:	households miniatures Japanese E. S. Morse
Credit:	Gift of Catharine Robb Whyte, O. C., Banff, 1979
Catalogue Number:	102.04.0308

## Images



This material is presented as originally created; it may contain outdated cultural descriptions and potentially offensive content. [Read more.](#)