



Academic Gown

<https://archives.whyte.org/en/permalink/artifact103.09.0021>

Title: Academic Gown

Date: 1902 – 1902

Material: fibre, cotton

Dimensions: 130.0 cm

Description: A long black academic gown with long wide pointed sleeves gathered at the shoulders. The gown opens down the length of the gown front, with a wide panel on either side, and snaps to fasten at the top creating a V-neck. The back of the gown is gathered between the shoulders with a square 'collar' at the yoke and a line of twisted cording down centre that buttons at the bottom of the yoke. The monogram "P.A.M." is sewn on a label at the neck. There is also a manufacturer's label at the neck.

Subject: Philip Moore

education

ceremonial

Credit: Gift of Pearl Evelyn Moore, Banff, 1979

Catalogue Number: 103.09.0021

Images



This material is presented as originally created; it may contain outdated cultural descriptions and potentially offensive content. [Read more.](#)



Academic Gown

<https://archives.whyte.org/en/permalink/artifact103.09.0023>

Title:	Academic Gown
Date:	1904 – 1904
Material:	fibre, cotton; fibre
Dimensions:	128.5 cm
Description:	A gold-coloured academic gown gathered at the yoke and sleeves. The gown has a wide curving neck and front opening that are banded with black satin. There are three black satin bands along edges of the wide, long, pointed sleeves. The gown fastens at the front of the neck with hooks and a narrow ribbon tie.
Subject:	education ceremonial
Credit:	Gift of Pearl Evelyn Moore, Banff, 1979
Catalogue Number:	103.09.0023

Images



This material is presented as originally created; it may contain outdated cultural descriptions and potentially offensive content. [Read more.](#)



Academic Hood

<https://archives.whyte.org/en/permalink/artifact103.09.0022>

Title:	Academic Hood
Date:	1902 – 1902
Material:	fibre, cotton; fibre, silk; fibre
Dimensions:	90.0 x 107.0 cm
Description:	A black academic hood that has a sleeve shape at the end. The deep hood is lined with orange silk and black silk in wide bands. The hood is edged in light grey velvet which forms a strap to pass over the shoulders and rest on the chest.
Subject:	education ceremonial Philip Moore Princeton University
Credit:	Gift of Pearl Evelyn Moore, Banff, 1979
Catalogue Number:	103.09.0022

Images



This material is presented as originally created; it may contain outdated cultural descriptions and potentially offensive content. [Read more.](#)



Air Meter

<https://archives.whyte.org/en/permalink/artifact104.30.0006>

Title:	Air Meter
Date:	1900 – 1930
Material:	metal; glass; wood
Dimensions:	7.1 x 7.8 x 8.5 cm

Description:	Air meter enclosed in circular shallow brass case covered with glass, and standing on three brass legs (3.5 cm) attached to a solid brass disk stand of the same size. Brass ring attached perpendicular to side of the meter case by two thin metal arms, contains wind vane with eight small square sails attached to centre by small metal arms. Face dial measured around perimeter with numbers from 0-90 has small circular dial at top with numbers from 0-9 and the letters "HDS" just above central pivot of small thin needle. Dial reads "Air meter to 1000 feet/No 508". Bottom of solid brass base has screw hole at centre to hold screw mount which is brass finger screw with black painted brass tube attached to top. Lever on side of meter halts needle. Box, plain square wooden box with brass hinges for lid is fitted with small blocks of wood to hold air meter securely in place. Mounting screw slips over arm of piece of wood fastened to lid. Paper label inside lid reads, "Correction for Air Meter No. 508/. Add 30 per minute to the observed reading of the Air Meter. Note. Each instrument is now regulated so as to reduce the correction to a constant quantity per minute, which must be added as in the example given.". Small brass latch hook closes lid.
Subject:	households industry surveying Russell Robb
Credit:	Gift of Catharine Robb Whyte, O. C., Banff, 1979
Catalogue Number:	104.30.0006

Images



This material is presented as originally created; it may contain outdated cultural descriptions and potentially offensive content. [Read more.](#)



Alpine Hat

<https://archives.whyte.org/en/permalink/artifact103.04.1047>

Title:	Alpine Hat
Date:	1900 – 1950
Material:	fibre
Dimensions:	13.0 x 20.0 x 26.0 cm
Description:	Olive green felt alpine hat with hatband made of three strands of gold cord. Broken black feather tucked into hatband. Two labels inside hat: "Made in Austria" & "ORIGINAL Tscher HUT."
Subject:	sports climbing packers and guides Swiss guides Ernest Feuz Canadian Pacific Railway
Credit:	Gift of Fred Feuz, Salmon Arm, 1999
Catalogue Number:	103.04.1047

Images



This material is presented as originally created; it may contain outdated cultural descriptions and potentially offensive content. [Read more.](#)



Amplifying Horn

<https://archives.whyte.org/en/permalink/artifact105.03.1008>

Title:	Amplifying Horn
Date:	1905 – 1915
Material:	metal
Dimensions:	55.0 cm
Description:	Large metal amplifying horn from phonograph. Flared shape in eleven sections. Blue paint worn off in many areas. Small red label reads: “‘Rex’ TRADEMARK STANDARD AMPLIFYING HORN. THE BEST FOR TONE. R.S.W. & S.”
Subject:	households entertainment music
Credit:	Gift of Marika McCaffrey, Banff, 1998
Catalogue Number:	105.03.1008

Images



This material is presented as originally created; it may contain outdated cultural descriptions and potentially offensive content. [Read more.](#)



Andiron Accessory, Fireplace

<https://archives.whyte.org/en/permalink/artifact102.07.0007%20a%2cb>

Title: Andiron Accessory, Fireplace

Date: 1900 – 1940

Material: metal, brass; metal, iron

Dimensions: 40.0 x 29.5 x 60.0 cm

Description: A pair of three-legged andirons. Each andiron has a large, spool like, brass ornament topped with a large ball. This decoration sits on two curved solid brass legs. The third leg is attached behind the first two by a curved, brass covered, horizontal iron bar. This third leg is topped by a smaller brass knob. The bar attaching the third leg continues straight back and bends at a right angle down to form another leg and forms the section that supports logs. The knobs unscrew from the legs and each andiron breaks down.

Subject: households

Credit: Gift of Pearl Evelyn Moore, Banff, 1979

Catalogue Number: 102.07.0007 a,b

Images



This material is presented as originally created; it may contain outdated cultural descriptions and potentially offensive content. [Read more.](#)



Aneroid Barometer

<https://archives.whyte.org/en/permalink/artifact104.30.1006%20a%2cb>

Title:	Aneroid Barometer
Date:	1900 – 1905
Material:	metal; glass; paper; skin
Dimensions:	10.5 x 8.5 cm
Description:	Two aneroid barometer-altimeters (a & b) labeled: "Keuffel & Esser Co. N.Y. MADE IN ENGLAND. Improved Surveying Aneroid Compensated" Black oxidized finish on the case. Altitude graduation up to 12,000 feet. Leather carrying cases contain comparative pressure test sheet dated 1903 and issued by Keuffel & Esser.
Subject:	photography Vaux family surveying science
Credit:	Gift of Molly Vaux, New York, USA, 1999
Catalogue Number:	104.30.1006 a,b

Images



This material is presented as originally created; it may contain outdated cultural descriptions and potentially offensive content. [Read more.](#)



Animal Figurine

<https://archives.whyte.org/en/permalink/artifact107.01.0010>

Title:	Animal Figurine
Date:	1900 – 1940
Material:	mineral, onyx
Dimensions:	2.0 x 12.0 cm
Description:	A stylized dragon carved from white onyx. The dragon's body is flat and slightly arched over a round disk base with a dragon's head at one end looking back over the body. There is an ornate raised relief carving on the body. The base is marked with (Chinese?) characters inside a square.
Subject:	households collectables crafts carving animals, dragon myths
Credit:	Gift of Pearl Evelyn Moore, Banff, 1979
Catalogue Number:	107.01.0010

Images



This material is presented as originally created; it may contain outdated cultural descriptions and potentially offensive content. [Read more.](#)



Anklung

<https://archives.whyte.org/en/permalink/artifact104.33.0011>

Title:	Anklung
Date:	1900 – 1935
Material:	wood
Dimensions:	33.9 x 4.0 x 24.0 cm
Description:	Bamboo musical instrument made of two hollow bamboo tubes suspended on split bamboo frame of three thin upright sticks supported in holes cut in hollow bamboo tube at bottom. Two flat pieces of bamboo are secured crosswise into the split uprights and each holds one of the bamboo tubes which are hung on them by a semicircular hole which fits into a notch on the crosspiece, half of the upper part of these tubes have been cut away lengthwise and at their bottom two small legs have been carved which fit into wells cut in the bamboo tube at the bottom. When the instrument is held by one of the uprights and shaken, the hollow bamboo clappers strike the sides of this well and make a musical sound.
Subject:	households entertainment
Credit:	Gift of Catharine Robb Whyte, O. C., Banff, 1979
Catalogue Number:	104.33.0011

Images



This material is presented as originally created; it may contain outdated cultural descriptions and potentially offensive content. [Read more.](#)



Antimacassar

<https://archives.whyte.org/en/permalink/artifact102.04.0168>

Title: Antimacassar

Date: 1900 – 1930

Material: fibre, cotton

Dimensions: 21.0 x 37.0 cm

Description: A white filigree lace antimacassar that has a straight edge across the top with sharp corners and is rounded on the bottom corners. A solid border is scalloped along the rounded edges. The border encloses a wide band of openwork lace containing a diamond shape pattern of thick dots around a solid rectangular centre with openwork bar across a repeating diamond pattern.

Subject: households
decorative
crafts
needlework

Credit: Gift of Pearl Evelyn Moore, Banff, 1979

Catalogue Number: 102.04.0168

Images



This material is presented as originally created; it may contain outdated cultural descriptions and potentially offensive content. [Read more.](#)



Arc Lamp Carbons

<https://archives.whyte.org/en/permalink/artifact104.41.1001%20a-i>

Title: Arc Lamp Carbons

Date: 1900 – 1920

Material: carbon, paper

Description: 8 black carbon rods in box; (a - g); ca 30.6 long, 1.0 diameter; (h) ca 30.6 long, 1.3 diameter; printed on rod: "National trade mark Photographic white flame cored" made in U.S.A. 390" 671; (i) corrugated cardboard box 31.6 x 10.5 x 6.5; with manufacturer's label "Macbeth Arc Lamp Co."

Subject: photography

Byron Harmon

Credit: Gift of Don Harmon, Banff, 1966

Catalogue Number: 104.41.1001 a-i

Images



This material is presented as originally created; it may contain outdated cultural descriptions and potentially offensive content. [Read more.](#)



Arrow

<https://archives.whyte.org/en/permalink/artifact104.05.0038%20a%2cb%2cc>

Title:	Arrow
Date:	1900 – 1930
Material:	wood; feather; sinew
Dimensions:	69.5 (a); 72.7 (b); 58.0 (c) cm
Description:	Three handmade arrows carved from wooden twigs, each with three split and trimmed shaft feathers bound to a notched end. All three arrows have sharpened tips and are painted with coloured bands: a) An arrow with red, green and yellow bands under feathers. Long pieces of down have been left at the bottom of the feathers. b) An arrow with bands of red, blue, and red under the feathers. c) An arrow with bands of blue, red, blue, yellow, blue, red, and blue under the feathers, and with a red band at the tip.
Subject:	Indigenous hunting sports, archery crafts carving
Credit:	Gift of Pearl Evelyn Moore, Banff, 1979
Catalogue Number:	104.05.0038 a,b,c

Images



This material is presented as originally created; it may contain outdated cultural descriptions and potentially offensive content. [Read more.](#)



Ashtray

<https://archives.whyte.org/en/permalink/artifact102.04.1076>

Title:	Ashtray
Date:	1905 – 1950
Material:	metal
Dimensions:	4.0 cm
Description:	Tarnished metal ashtray, circular with rest for cigarette.
Subject:	packers and guides camping smoking Bert Riggall
Credit:	Gift of Dale Burton, Surrey, 1999
Catalogue Number:	102.04.1076

Images



This material is presented as originally created; it may contain outdated cultural descriptions and potentially offensive content. [Read more.](#)



Ashtray

<https://archives.whyte.org/en/permalink/artifact102.04.0059>

Title:	Ashtray
Date:	1900 – 1940
Material:	metal, brass
Dimensions:	6.0 x 8.0 x 8.0 cm
Description:	A brass ashtray. The base is a shallow bowl with a sculpted figure of a seated cat placed off-centre as decoration.
Subject:	households smoking
Credit:	Gift of Pearl Evelyn Moore, Banff, 1979
Catalogue Number:	102.04.0059

Images



This material is presented as originally created; it may contain outdated cultural descriptions and potentially offensive content. [Read more.](#)



Ashtray

<https://archives.whyte.org/en/permalink/artifact102.04.0060>

Title:	Ashtray
Date:	1900 – 1940
Material:	metal, copper
Dimensions:	15.0 x 15.0 cm
Description:	A crudely made ashtray. The bowl has been hammered from a flat sheet of copper, and the rim left square. The ashtray has a split in the base and the rim is bent.
Subject:	households smoking
Credit:	Gift of Pearl Evelyn Moore, Banff, 1979
Catalogue Number:	102.04.0060

Images



This material is presented as originally created; it may contain outdated cultural descriptions and potentially offensive content. [Read more.](#)



Ashtray

<https://archives.whyte.org/en/permalink/artifact102.04.0062>

Title:	Ashtray
Date:	1900 – 1940
Material:	metal, pewter; glass; stone
Dimensions:	5.0 x 9.5 x 9.5 cm
Description:	An ashtray that is a short cylinder and is spanned by a cigarette rest. The outside is decorated with a raised floral design that is inset with glass and stone. The base is stamped "China". One side is badly dented.
Subject:	households smoking
Credit:	Gift of Pearl Evelyn Moore, Banff, 1979
Catalogue Number:	102.04.0062

Images



This material is presented as originally created; it may contain outdated cultural descriptions and potentially offensive content. [Read more.](#)



Ashtray

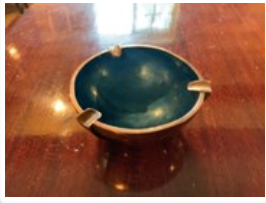
<https://archives.whyte.org/en/permalink/artifact102.04.0065>

Title:	Ashtray
Date:	1900 – 1950
Material:	metal, silver; glass
Dimensions:	15.0 x 12.0 x 12.0 cm
Description:	A silver plated cigar ashtray with a glass insert bowl. The ashtray has a circular base with three bands arched over the bowl that support a two sided match box holder monogrammed with "P.A.M." (Philip Augustus Moore).
Subject:	households smoking
Credit:	Gift of Pearl Evelyn Moore, Banff, 1979
Catalogue Number:	102.04.0065

Images



This material is presented as originally created; it may contain outdated cultural descriptions and potentially offensive content. [Read more.](#)



Ashtray

<https://archives.whyte.org/en/permalink/artifact102.04.0068>

Title:	Ashtray
Date:	1900 – 1940
Material:	metal, copper; metal, brass; enamel
Dimensions:	4.0 x 10.0 x 10.0 cm
Description:	A circular copper ashtray that is bowl shaped and is lined with blue enamel. There are three brass cigarette rests that are spaced evenly around the top rim. There is slight pitting on the base and the inside enamel is chipped. "CHINA" is stamped on the base.
Subject:	households smoking
Credit:	Gift of Pearl Evelyn Moore, Banff, 1979
Catalogue Number:	102.04.0068

Images



This material is presented as originally created; it may contain outdated cultural descriptions and potentially offensive content. [Read more.](#)



Ashtray

<https://archives.whyte.org/en/permalink/artifact102.04.0074>

Title:	Ashtray
Date:	1900 – 1950
Material:	metal
Dimensions:	3.1 x 9.3 x 12.0 cm
Description:	An ashtray shaped like a curled leaf. The ashtray rests on three small feet and is painted to look as if it's tarnished copper.
Subject:	households smoking
Credit:	Gift of Pearl Evelyn Moore, Banff, 1979
Catalogue Number:	102.04.0074

Images



This material is presented as originally created; it may contain outdated cultural descriptions and potentially offensive content. [Read more.](#)