



And Scabbard Dirk

<https://archives.whyte.org/en/permalink/artifact104.05.0057%20a%2cb>

Title:	And Scabbard Dirk
Date:	1875 – 1930
Material:	metal; wood; fibre
Dimensions:	2.1 x 1.0 x 15.0 cm
Description:	<p>A very thin knife with ebony handle like rifle butt and wooden scabbard wrapped with bands of black cord. (a) dirk, short, narrow, pointed steel blade with reverse curve to sharp shoulder on under side of hilt. Small carved ebony handle shaped like a rifle butt, with carved band of scallops and diamond shapes around middle. Two decorative notches carved across butt of handle. Note: handle checked along length. (b) scabbard, small, simple and straight, carved of two pieces of wood with triangular opening at mouth. Top carved to curve downward on one side to accommodate shoulder of blade. Girded with four double bands of finely braided cord, evenly spaced along length, and a fifth triple band at top beneath shoulder. Note: top fibre hands loose and slide up and down.</p>
Subject:	<p>warfare</p> <p>fighting</p> <p>Japanese</p> <p>Edward S. Morse</p>
Credit:	Gift of Catharine Robb Whyte, O. C., Banff, 1979
Catalogue Number:	104.05.0057 a,b

Images



This material is presented as originally created; it may contain outdated cultural descriptions and potentially offensive content. [Read more.](#)



Aneroid Barometer

<https://archives.whyte.org/en/permalink/artifact104.30.0008>

Title:	Aneroid Barometer
Date:	1870 – 1910
Material:	glass; metal
Dimensions:	5.8 x 19.1 cm
Description:	Wall type aneroid barometer in a brass casing with three brackets for screw mounting, its range is 710 to 790 millimeters. It's manufactured for the Phillipine Islands and all the surface information is in Spanish. The longer of the two brass needles under the glass is the pressure indicator and the shorter of the needles is the setting which can be varied manually for purposes of comparison.
Subject:	households industry weather Russell Robb
Credit:	Gift of Catharine Robb Whyte, O. C., Banff, 1979
Catalogue Number:	104.30.0008

Images



This material is presented as originally created; it may contain outdated cultural descriptions and potentially offensive content. [Read more.](#)



Artificial Fruit

<https://archives.whyte.org/en/permalink/artifact107.01.0032>

Title:	Artificial Fruit
Date:	1870 – 1920
Material:	glass
Dimensions:	5.5 cm
Description:	A handblown clear glass fruit (apple/tomato?) with a crackled surface and a single leaf hanging from the stem. The glass has a gold sheen.
Subject:	households collectables plants
Credit:	Gift of Pearl Evelyn Moore, Banff, 1979
Catalogue Number:	107.01.0032

Images



This material is presented as originally created; it may contain outdated cultural descriptions and potentially offensive content. [Read more.](#)



Artificial Fruit

<https://archives.whyte.org/en/permalink/artifact107.01.0035>

Title:	Artificial Fruit
Date:	1870 – 1920
Material:	glass
Dimensions:	10.0 cm
Description:	A handblown clear glass lemon with a crackled surface and a single leaf hanging from the stem.
Subject:	households collectables plants
Credit:	Gift of Pearl Evelyn Moore, Banff, 1979
Catalogue Number:	107.01.0035

Images



This material is presented as originally created; it may contain outdated cultural descriptions and potentially offensive content. [Read more.](#)



Balance Scale

<https://archives.whyte.org/en/permalink/artifact104.48.0004>

Title: Balance Scale

Date: 1875 – 1925

Material: wood; metal, brass

Dimensions: 9.0 x 9.5 x 17.0 cm

Description: A brass balance scale on a varnished wood base, painted black around the edges, with small wooden button feet. The arms of the scale and an indicator needle balance on a rod through a hole at the apex of triangular shaped legs. One side of the scale is an oval plate for the item to be weighed and the other side is round for counterweights. Four flat round brass weights in various sizes are stamped with their value ("2 oz", "1 oz", "1/2 oz", and "1/4 oz") and fit into cut out circles on the base in front of the scale.

Subject: households

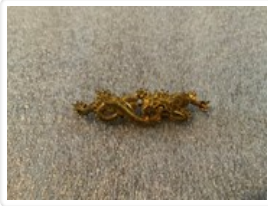
Credit: Gift of Pearl Evelyn Moore, Banff, 1979

Catalogue Number: 104.48.0004

Images



This material is presented as originally created; it may contain outdated cultural descriptions and potentially offensive content. [Read more.](#)

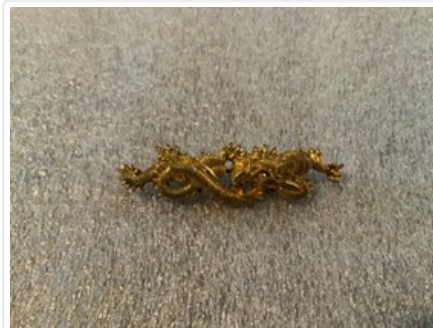


Bar Pin

<https://archives.whyte.org/en/permalink/artifact103.01.0189>

Title:	Bar Pin
Date:	1875 – 1910
Material:	metal
Dimensions:	1.5 x 0.8 x 4.9 cm
Description:	A gold, snake-like, dragon tied in a knot. Cast bronze dragon in high relief with minute detail, scales, teeth, facial features , coiled round into knot with one foot extended forward, and tail behind. Spikes along back. Long pin spike soldered to flat plate at tail end, hinges to fasten beneath locking barrel clasp at other end.
Subject:	Whyte home households adornment animal dragon Japanese Edward S. Morse
Credit:	Gift of Catharine Robb Whyte, O. C., Banff, 1979
Catalogue Number:	103.01.0189

Images



This material is presented as originally created; it may contain outdated cultural descriptions and potentially offensive content. [Read more.](#)



Bar Pin

<https://archives.whyte.org/en/permalink/artifact103.01.0190%20a-c>

Title:	Bar Pin
Date:	1875 – 1925
Material:	metal; stone; pearl
Dimensions:	1.1 x 0.7 x 7.4 cm
Description:	Three long bar pins, each containing sapphires. Long, hinged pin spike across back fastens under locking hook clasp. (a) with pearls, long, narrow, rhodium plated, delicate wire filigree set with five, small 3 dia., blue sapphires spaced evenly across, with four, small .2 dia. cultured pearls set between. Filigree follows small, triangular, leaf shape on either side of the sapphires. Solid areas sharply engraved to pick up light and sparkle. Back gold colour. (b) with moonstones, long, oval, clear moonstone 1.6 x .6 at middle, flanked by smaller, clear, round .5 dia. moonstone each side. Halfway along remainder of each side is large .5 dia. blue sapphire. Areas between stones filled with heavy interlocking wire circles. (c) star sapphire, long, elliptical, solid gold pin with design around flowers and leaves pierced through. Oval .9 x .6, domed star sapphire at middle. Hook clasp does not lock.
Subject:	Whyte home households adornment
Credit:	Gift of Catharine Robb Whyte, O. C., Banff, 1979
Catalogue Number:	103.01.0190 a-c

Images



This material is presented as originally created; it may contain outdated cultural descriptions and potentially offensive content. [Read more.](#)



Bar Pin

<https://archives.whyte.org/en/permalink/artifact103.01.0191%20a-c>

Title:	Bar Pin
Date:	1875 – 1925
Material:	metal; pearl
Dimensions:	0.6 x 0.4 x 2.6 cm
Description:	Three small bar pins, 2 of delicate filigree, 1 arced with pearls. Hinged pin spike across back fastens under locking hook clasp. (a) rhodium filigree, narrow rectangle containing delicate, straight wires connecting four small flowers across pin. Rhodium plated metal sharply engraved to pick up the light and sparkle. Back and sides gold colour. (b) gold filigree, as (a) but delicate wire ellipse on either side of single, central flower. (c) pearls, small, flat, gold bar shaped in 90 degree arc with eleven, small, cultured pearls set along arc, pearls graduate in size from .1 to .2 cm, with largest at the middle. Pin spike passes from one end of arc to other. Hook clasp does not have locking mechanism.
Subject:	Whyte home households adornment
Credit:	Gift of Catharine Robb Whyte, O. C., Banff, 1979
Catalogue Number:	103.01.0191 a-c

Images



This material is presented as originally created; it may contain outdated cultural descriptions and potentially offensive content. [Read more.](#)



Bar Pin

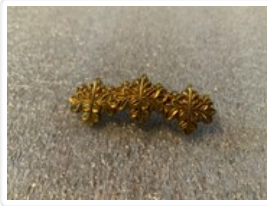
<https://archives.whyte.org/en/permalink/artifact103.01.0131%20a%2cb>

Title:	Bar Pin
Date:	1870 – 1910
Material:	metal; stone; pearl
Dimensions:	0.7 x 0.3 x 2.3 cm
Description:	<p>Two small bar pins set with pearls alternating with pale blue sapphires. Gold bar has tiny gold spikes to hold pearls, and small prongs to hold sapphires at same height as pearls. Hinged gold pin spike at one end of back fastens in clasp at opposite end. (a) smaller - four pearls alternated with three sapphires, prong fitting holding sapphires quite solid, clasp is simple hook. (b) longer - five sapphires alternating with four pearls. Prong fitting holding sapphires quite open, almost being four legs on which each stone rests. Pearl of uniform size but slightly irregular in shape. Hook clasp has simple locking mechanism.</p>
Subject:	Whyte home households adornment
Credit:	Gift of Catharine Robb Whyte, O. C., Banff, 1979
Catalogue Number:	103.01.0131 a,b

Images



This material is presented as originally created; it may contain outdated cultural descriptions and potentially offensive content. [Read more.](#)



Bar Pin

<https://archives.whyte.org/en/permalink/artifact103.01.0132>

Title:	Bar Pin
Date:	1875 – 1910
Material:	metal
Dimensions:	1.3 x 0.9 x 3.5 cm
Description:	A gold filled pin of three flower blossoms and leaves joined side by side in a line. Pin arches upward slightly, each flower consists of a stem with three sets of compound leaves branching from it, and a cluster of tiny closed buds above. Pin spike hinge and curled hook clasp soldered to back, but pin spike missing.
Subject:	Whyte home households adornment Japanese Edward S. Morse;
Credit:	Gift of Catharine Robb Whyte, O. C., Banff, 1979
Catalogue Number:	103.01.0132

Images



This material is presented as originally created; it may contain outdated cultural descriptions and potentially offensive content. [Read more.](#)



Basketry Vase

<https://archives.whyte.org/en/permalink/artifact102.04.0187>

Title:	Basketry Vase
Date:	1877 – 1883
Material:	wood; fibre; metal
Dimensions:	6.5 x 4.5 x 5.5 cm
Description:	A small gourd-shaped flower holder of wickerwork with open mouth at top finished with braided rim; small butterfly or moth of coiled wicker with leaf fibre wings and small metal eyes, is attached to side of form by coiled metal spring; small loop handle near mouth; hollow bamboo tube inside.
Subject:	households miniatures Japanese E.S. Morse
Credit:	Gift of Catharine Robb Whyte, O. C., Banff, 1979
Catalogue Number:	102.04.0187

Images



This material is presented as originally created; it may contain outdated cultural descriptions and potentially offensive content. [Read more.](#)



Basketry Vase

<https://archives.whyte.org/en/permalink/artifact102.04.0188>

Title: Basketry Vase

Date: 1877 – 1883

Material: wood; fibre; paper

Dimensions: 11.0 x 5.0 cm

Description: A small sac-shaped flower holder of brown wickerwork with open mouth at top finished with braided rim. Three-leaved vine attached to side of mouth is of leaf fibre backed with newspaper on shaped frame with coiled vine stem. Small loop on opposite side of mouth. Bamboo tube for holding water is missing.

Subject: households

miniatures

Japanese

E. S. Morse

Credit: Gift of Catharine Robb Whyte, O. C., Banff, 1979

Catalogue Number: 102.04.0188

Images



This material is presented as originally created; it may contain outdated cultural descriptions and potentially offensive content. [Read more.](#)



Beaded Bag

<https://archives.whyte.org/en/permalink/artifact103.08.0003>

Title:	Beaded Bag
Date:	1870 – 1900
Material:	skin, deer; glass
Dimensions:	15.0 x 44.5 cm
Description:	A long, narrow, curve bottomed flat bag with a rounded flap. The bag has a leather tassel hanging from the bottom edge. The front of the bag is completely beaded with a light blue background and a column of triangles of green, red, yellow and blue beads.
Subject:	Indigenous, Stoney decorative regalia beadwork
Credit:	Gift of Pearl Evelyn Moore, Banff, 1979
Catalogue Number:	103.08.0003

Images



This material is presented as originally created; it may contain outdated cultural descriptions and potentially offensive content. [Read more.](#)



Beaded Collar

<https://archives.whyte.org/en/permalink/artifact103.01.0067>

Title:	Beaded Collar
Date:	1875 – 1925
Material:	glass; skin; fibre
Dimensions:	43.0 x 36.0 cm
Description:	<p>A heavily beaded yoke, edged with beaded loop lace, to be worn over the shoulders and hanging in front and back with a point at the middle. Completely covered with blue background beading and simple large stylized four-petalled flower in red with black at inner part of each petal around red centre, and four elongated green leaves, one between each petal. Long black stems curving off to each side hold three-pointed blossom of dark green and orange outlined in lighter green with two dark green leaves beneath. Same motif repeated on back but slight colour variations. Entire yoke edged with wide, looped netting of cylindrical beads forming lace like effect with strings of buckskin threaded with beads hanging from the outermost edge. Netting beads of transparent amber, green, turquoise, white, and red.</p>
Subject:	<p>Indigenous beadwork regalia McLean Family CRW funeral</p>
Credit:	Gift of Catharine Robb Whyte, O. C., Banff, 1979
Catalogue Number:	103.01.0067

Images



This material is presented as originally created; it may contain outdated cultural descriptions and potentially offensive content. [Read more.](#)



Beaded Leggings

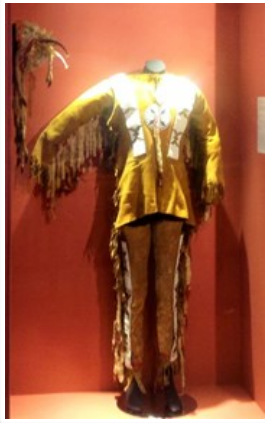
<https://archives.whyte.org/en/permalink/artifact103.05.0005%20a%2cb>

Title:	Beaded Leggings
Date:	1870 – 1890
Material:	skin, deer; glass
Dimensions:	32.0 x 30.0 cm
Description:	A pair of completely beaded leggings with a deerskin flap. These leggings tie around the legs with thongs. The beadwork is of a yellow background with pink, red and blue triangular design.
Subject:	Indigenous Blood Peigan beadwork decorative regalia
Credit:	Gift of Pearl Evelyn Moore, Banff, 1979
Catalogue Number:	103.05.0005 a,b

Images



This material is presented as originally created; it may contain outdated cultural descriptions and potentially offensive content. [Read more.](#)



Beaded Leggings

<https://archives.whyte.org/en/permalink/artifact103.05.0010%20a%2cb>

Title:	Beaded Leggings
Date:	1875 – 1890
Material:	skin; skin, ermine; hair, sheep; glass; fibre
Dimensions:	27.0 x 71.0 cm
Description:	Natural skin leggings fringed along the length of one side. A beaded strip along the outside length of each legging has a white background with a coloured design. There are ermine tails fastened into the fringe. The fringe is approximately 10 cm long.
Subject:	Indigenous Stoney Blackfoot Siksika beadwork decorative regalia
Credit:	Gift of Pearl Evelyn Moore, Banff, 1979
Catalogue Number:	103.05.0010 a,b

Images



This material is presented as originally created; it may contain outdated cultural descriptions and potentially offensive content. [Read more.](#)



Beaded Leggings

<https://archives.whyte.org/en/permalink/artifact103.05.0045%20a%2cb>

Title:	Beaded Leggings
Date:	1875 – 1900
Material:	skin; fibre, cotton; glass
Dimensions:	35.0 x 30.0 cm
Description:	A pair of beaded leggings worn on the leg from the knee to the ankle. The leggings tie on at the back of the leg with thongs. The leggings have a design of three vertical stripes and two diamond shapes of yellow, red, green and blue on a white background.
Subject:	Indigenous Blood Blackfoot Siksika decorative regalia beadwork
Credit:	Gift of Pearl Evelyn Moore, Banff, 1979
Catalogue Number:	103.05.0045 a,b

Images



This material is presented as originally created; it may contain outdated cultural descriptions and potentially offensive content. [Read more.](#)



Beaded Moccasins

<https://archives.whyte.org/en/permalink/artifact103.03.1021%20a%2cb>

Title:	Beaded Moccasins
Date:	1875 – 1925
Material:	skin; glass
Dimensions:	26.5 x 12.5 x 26.5 cm
Description:	Men's traditional moccasins made of of white tail deer. Completely beaded, pale blue/red/yellow tepee, Rocky Mountain style cut of one piece, pale blue background, red and yellow tepee design on toe, red and yellow bow design along each side of foot, sole edge trimmed in stepped red and dark blue motifs, large soft ankle flap, small, rectangular tongue, long buckskin laces, soles patched at heel and ball of foot.
Subject:	Indigenous Stoney regalia beadwork
Credit:	Gift of Unknown, 1968
Catalogue Number:	103.03.1021 a,b

Images



This material is presented as originally created; it may contain outdated cultural descriptions and potentially offensive content. [Read more.](#)

Beaded Moccasins

<https://archives.whyte.org/en/permalink/artifact103.03.0005%20a%2cb>

Title:	Beaded Moccasins
Date:	1870 – 1880
Material:	skin; glass
Dimensions:	25.0 cm
Description:	A pair of soft moccasins with parfleche soles and a thong threaded through holes at the ankle for tying. The beadwork is of yellow, red and blue geometric design in a wide strip from the ankle, along the instep to the toe. There is also a narrow strip of beadwork vertically along the back of the heel.
Subject:	Indigenous, Cheyenne beadwork regalia decorative
Credit:	Gift of Pearl Evelyn Moore, Banff, 1979
Catalogue Number:	103.03.0005 a,b

Images



This material is presented as originally created; it may contain outdated cultural descriptions and potentially offensive content. [Read more.](#)



Beaded Moccasins

<https://archives.whyte.org/en/permalink/artifact103.03.0003%20a%2cb>

Title:	Beaded Moccasins
Date:	1870 – 1880
Material:	skin; glass
Dimensions:	23.0 cm
Description:	<p>A pair of soft moccasins with a fringe along the back of the heel. There is a casing at the ankle for a thong used to tie the moccasins on the foot. These moccasins are completely beaded on the uppers with the exception of an area of the ankle. The design is on a blue background except for the instep which is white with a stepped triangle which has a cross at its tip. The colours of beads are: blue, white, red, dark blue, and black.</p>
Subject:	<p>Indigenous</p> <p>decorative</p> <p>beadwork</p> <p>regalia</p>
Credit:	Gift of Pearl Evelyn Moore, Banff, 1979
Catalogue Number:	103.03.0003 a,b

Images



This material is presented as originally created; it may contain outdated cultural descriptions and potentially offensive content. [Read more.](#)