



Vase

<https://archives.whyte.org/en/permalink/artifact102.04.1002>

Title:	Vase
Date:	1890 – 1910
Material:	ceramic
Dimensions:	14.7 x 8.7 cm
Description:	Ex Banff Sanitarium, drainage holes in base, white china, wide red-purple band outlined with gold lines, stamped brown "Banff Sanitarium" crest (belt forming oval shape) on front, 5 cm drainage holes in base, very simple shape, lip gently flaring from wide neck and slightly bulbous belly, gold line around foot and lip
Subject:	Banff Sanitarium
	Dr. Brett
Credit:	Gift of Mr. and Mrs. Norman Tabuteau, Banff, 1966
Catalogue Number:	102.04.1002

Images



This material is presented as originally created; it may contain outdated cultural descriptions and potentially offensive content. [Read more.](#)



Vase

<https://archives.whyte.org/en/permalink/artifact102.04.1008>

Title: Vase

Date: 1890 – 1910

Material: ceramic

Dimensions: 12.2 cm

Description: white and green, ex Banff Sanitarium Hotel, white, band of sunflowers and waterlilies against scalloped green background, "Sanitarium Hotel/Banff" written in crest (belt in oval shape stamped on shoulder above band, small simple shape with slightly ribbed sides and high shoulders closing in to wide mouth and small undulating lip, trademark crest stamped on base noting it is "porcelain opaque"

Subject: institutions

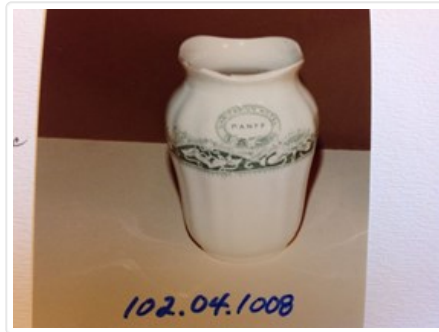
Banff Sanitarium

Dr. Brett

Credit: Gift of Forrest (Pat) Oliver Brewster, Banff, 1966

Catalogue Number: 102.04.1008

Images



This material is presented as originally created; it may contain outdated cultural descriptions and potentially offensive content. [Read more.](#)



Vase

<https://archives.whyte.org/en/permalink/artifact102.04.0230>

Title:	Vase
Date:	1870 – 1935
Material:	ceramic
Dimensions:	6.3 x 6.0 cm
Description:	Transparent glaze and cobalt decoration. Landscape with tree decoration, trimmed foot. Flared rim at open mouth above straight sides with no neck.
Subject:	households decorative miniatures E. S. Morse
Credit:	Gift of Catharine Robb Whyte, O. C., Banff, 1979
Catalogue Number:	102.04.0230

Images



This material is presented as originally created; it may contain outdated cultural descriptions and potentially offensive content. [Read more.](#)



Vase

<https://archives.whyte.org/en/permalink/artifact102.04.0231>

Title:	Vase
Date:	1870 – 1935
Material:	ceramic, porcelain
Dimensions:	5.4 x 5.1 cm
Description:	Slab-footed, hand formed body to resemble bell-flower shape. Transparent glaze with cobalt speckling inside and outside of rim. Tooled bract-shaped forms near base; signature stamp on bottom.
Subject:	households decorative miniatures E. S. Morse
Credit:	Gift of Catharine Robb Whyte, O. C., Banff, 1979
Catalogue Number:	102.04.0231

Images



This material is presented as originally created; it may contain outdated cultural descriptions and potentially offensive content. [Read more.](#)



Vase

<https://archives.whyte.org/en/permalink/artifact102.04.0237>

Title:	Vase
Date:	1870 – 1935
Material:	ceramic
Dimensions:	10.5 x 7.6 cm
Description:	Bamboo stalk shaped vase. Very pale transparent green glaze - heavily cracked slab-built then seam formed and carved to resemble bamboo stalk. Base has concave indentation, cylindrical shape on a flat, circular base.
Subject:	households decorative E. S. Morse
Credit:	Gift of Catharine Robb Whyte, O. C., Banff, 1979
Catalogue Number:	102.04.0237

Images



This material is presented as originally created; it may contain outdated cultural descriptions and potentially offensive content. [Read more.](#)



Vase

<https://archives.whyte.org/en/permalink/artifact102.04.0238>

Title:	Vase
Date:	1870 – 1935
Material:	ceramic
Dimensions:	8.5 x 8.7 cm
Description:	<p>Small spheroid vase with cylindrical neck, beige glaze with black, red, gold, green enamel over-glazes in flower pattern. Flat and trimmed foot. Neck has 2.2 cm. diameter, two sections of punch pattern which possibly created depression which runs the circumference. Signature stamp near base.</p>
Subject:	<p>households</p> <p>decorative</p> <p>miniatures</p> <p>E. S. Morse</p>
Credit:	Gift of Catharine Robb Whyte, O. C., Banff, 1979
Catalogue Number:	102.04.0238

Images



This material is presented as originally created; it may contain outdated cultural descriptions and potentially offensive content. [Read more.](#)



Vase

<https://archives.whyte.org/en/permalink/artifact102.04.0239>

Title:	Vase
Date:	1870 – 1935
Material:	ceramic
Dimensions:	15.1 x 9.0 cm
Description:	Near cylindrical vase with three L-shaped feet, transparent glaze with cobalt decoration of three crane-like birds, was hand thrown and base trimmed flat. Three feet slab built and attached separately to sides and extending out from base at right angles.
Subject:	households decorative E. S. Morse
Credit:	Gift of Catharine Robb Whyte, O. C., Banff, 1979
Catalogue Number:	102.04.0239

Images



This material is presented as originally created; it may contain outdated cultural descriptions and potentially offensive content. [Read more.](#)



Vase

<https://archives.whyte.org/en/permalink/artifact102.04.0244>

Title:	Vase
Date:	1832 – 1832
Material:	ceramic
Dimensions:	8.9 x 9.0 cm
Description:	Hand thrown, trim-footed, jar with 2.6 cm. diameter neck. Wax resist applied (probably) before glazing, Dominant green calligraphy and miscellaneous objects in design with yellow, red, white, pale green and deep blue trim. Red-bordered label in E.S. Morse's writing says "China, age 1832" and number resembling "707".
Subject:	households decorative Chinese E. S. Morse
Credit:	Gift of Catharine Robb Whyte, O. C., Banff, 1979
Catalogue Number:	102.04.0244

Images



This material is presented as originally created; it may contain outdated cultural descriptions and potentially offensive content. [Read more.](#)



Vase

<https://archives.whyte.org/en/permalink/artifact102.04.0245>

Title:	Vase
Date:	1870 – 1935
Material:	ceramic
Dimensions:	10.9 x 4.4 cm
Description:	Narrow, four-sided deep turquoise (from copper content glaze) vase, glaze crazed. Floral and bird panel designs. Press-moulded body and separately attached, four corner bracket feet.
Subject:	households decorative E. S. Morse
Credit:	Gift of Catharine Robb Whyte, O. C., Banff, 1979
Catalogue Number:	102.04.0245

Images



This material is presented as originally created; it may contain outdated cultural descriptions and potentially offensive content. [Read more.](#)



Vase

<https://archives.whyte.org/en/permalink/artifact102.04.0272%20a%2cb>

Title:	Vase
Date:	1890 – 1900
Material:	metal
Dimensions:	11.2 x 9.3 cm
Description:	One large (A) and one small (B) vase, each pear shaped with flared rim and neither having footed base but, rather, a rounded bottom. (A) stamped writing near rim, rim folded over. (B) rim folded over and 6.0 cm. section missing - probably broken off.
Subject:	households decorative
Credit:	Gift of Catharine Robb Whyte, O. C., Banff, 1979
Catalogue Number:	102.04.0272 a,b

Images



This material is presented as originally created; it may contain outdated cultural descriptions and potentially offensive content. [Read more.](#)



Vase

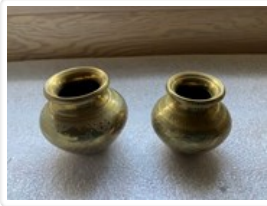
<https://archives.whyte.org/en/permalink/artifact102.04.0273>

Title:	Vase
Date:	1890 – 1900
Material:	metal
Dimensions:	9.5 x 8.5 cm
Description:	Squat, bulbous vases with flared rims. Collared where neck joins body. Seam can be seen on body of (A). Round versus flat bottomed.
Subject:	households decorative
Credit:	Gift of Catharine Robb Whyte, O. C., Banff, 1979
Catalogue Number:	102.04.0273

Images



This material is presented as originally created; it may contain outdated cultural descriptions and potentially offensive content. [Read more.](#)



Vase

<https://archives.whyte.org/en/permalink/artifact102.04.0274%20a%2cb>

Title:	Vase
Date:	1890 – 1900
Material:	metal
Dimensions:	7.8 x 8.5 cm
Description:	Urn shaped containers with wide-lipped rims. (A) tooled peacock and flower decoration with other line decoration, orange (B) tooled diagonal diamond and line decoration, ornate.
Subject:	households decorative
Credit:	Gift of Catharine Robb Whyte, O. C., Banff, 1979
Catalogue Number:	102.04.0274 a,b

Images



This material is presented as originally created; it may contain outdated cultural descriptions and potentially offensive content. [Read more.](#)



Vase

<https://archives.whyte.org/en/permalink/artifact102.04.0275>

Title:	Vase
Date:	1890 – 1900
Material:	metal
Dimensions:	10.7 x 10.4 cm
Description:	Bulbous container with wide-lipped rim. Crosshatch and other tooled line decoration throughout exterior. Small areas of copper visible.
Subject:	households decorative
Credit:	Gift of Catharine Robb Whyte, O. C., Banff, 1979
Catalogue Number:	102.04.0275

Images



This material is presented as originally created; it may contain outdated cultural descriptions and potentially offensive content. [Read more.](#)

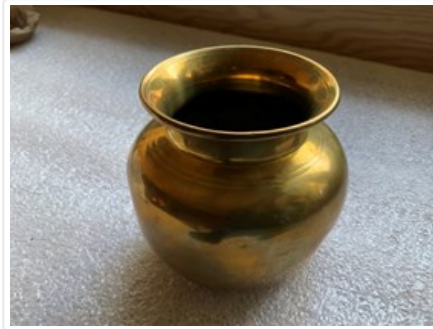


Vase

<https://archives.whyte.org/en/permalink/artifact102.04.0276>

Title:	Vase
Date:	1890 – 1900
Material:	metal
Dimensions:	9.0 x 9.5 cm
Description:	Bulbous container with short neck, flared rim. Seam at centre of body, two decorative lines on shoulder, one line decoration on inside rim.
Subject:	households decorative
Credit:	Gift of Catharine Robb Whyte, O. C., Banff, 1979
Catalogue Number:	102.04.0276

Images



This material is presented as originally created; it may contain outdated cultural descriptions and potentially offensive content. [Read more.](#)

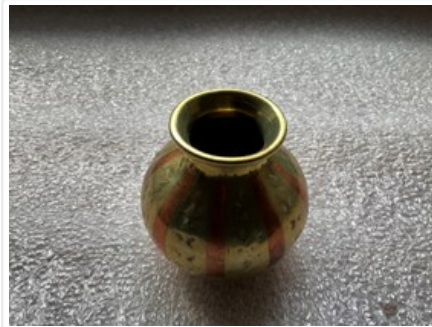


Vase

<https://archives.whyte.org/en/permalink/artifact102.04.0277>

Title:	Vase
Date:	1890 – 1900
Material:	metal
Dimensions:	5.9 x 6.3 cm
Description:	Bulbous container with flared rim. Copper on base and in alternating panels, line and geometric designs throughout exterior.
Subject:	households decorative
Credit:	Gift of Catharine Robb Whyte, O. C., Banff, 1979
Catalogue Number:	102.04.0277

Images



This material is presented as originally created; it may contain outdated cultural descriptions and potentially offensive content. [Read more.](#)



Vase

<https://archives.whyte.org/en/permalink/artifact102.04.0278>

Title:	Vase
Date:	1890 – 1900
Material:	metal
Dimensions:	7.7 x 10.0 cm
Description:	Footed, squat bulbous container with flared rim. Vertical, alternating panel design with leaves, other leaf border trim and line designs.
Subject:	households decorative
Credit:	Gift of Catharine Robb Whyte, O. C., Banff, 1979
Catalogue Number:	102.04.0278

Images



This material is presented as originally created; it may contain outdated cultural descriptions and potentially offensive content. [Read more.](#)