



### Occasional Chair

<https://archives.whyte.org/en/permalink/artifact102.03.0011>

Title: Occasional Chair

Date: 1890 – 1910

Material: wood, ash

Dimensions: 88.0 x 59.0 x 65.0 cm

Description: A Windsor chair made from Canadian ash with an oval seat. The back support of this chair are vertical spindles attached to the seat, arm rests, and top rail. The arm rests continue as one piece as an additional support of the spindles.

Subject: households  
furniture

Credit: Gift of Pearl Evelyn Moore, Banff, 1979

Catalogue Number: 102.03.0011

### Images



This material is presented as originally created; it may contain outdated cultural descriptions and potentially offensive content. [Read more.](#)



## Occasional Chair

<https://archives.whyte.org/en/permalink/artifact102.03.0020>

Title:	Occasional Chair
Date:	1890 – 1910
Material:	wood, mahogany; fibre, flax; hair, sheep
Dimensions:	86.0 x 55.0 x 55.0 cm
Description:	An occasional ladder-back armchair that is upholstered in blue wool, and covered with a floral linen slipcover.
Subject:	households furniture
Credit:	Gift of Pearl Evelyn Moore, Banff, 1979
Catalogue Number:	102.03.0020

## Images



This material is presented as originally created; it may contain outdated cultural descriptions and potentially offensive content. [Read more.](#)



## Occasional Chair

<https://archives.whyte.org/en/permalink/artifact102.03.0025>

Title:	Occasional Chair
Date:	1890 – 1910
Material:	wood, mahogany; fibre, silk
Dimensions:	98.5 x 71.0 x 71.0 cm
Description:	An enclosed armchair with mahogany trim and cabriole legs. The chair is upholstered in gold-coloured silk.
Subject:	households furniture
Credit:	Gift of Pearl Evelyn Moore, Banff, 1979
Catalogue Number:	102.03.0025

## Images



This material is presented as originally created; it may contain outdated cultural descriptions and potentially offensive content. [Read more.](#)



## Occasional Chair

<https://archives.whyte.org/en/permalink/artifact102.03.0027>

Title:	Occasional Chair
Date:	1890 – 1910
Material:	wood, mahogany; hair, sheep
Dimensions:	82.0 x 57.0 x 53.5 cm
Description:	A mahogany ladder-back armchair. One of the rails is turned / hand-carved. The seat is finished with blue wool flannel upholstery and covered with a floral slipcover.
Subject:	households furniture
Credit:	Gift of Pearl Evelyn Moore, Banff, 1979
Catalogue Number:	102.03.0027

## Images



This material is presented as originally created; it may contain outdated cultural descriptions and potentially offensive content. [Read more.](#)



## Occasional Chair

<https://archives.whyte.org/en/permalink/artifact102.03.0033>

Title:	Occasional Chair
Date:	1890 – 1910
Material:	wood
Dimensions:	107.0 x 50.0 x 64.5 cm
Description:	A high backed ladder-back armchair of simple design. There are five horizontal slats in the backrest. The seat is constructed of four sections joined together with tongue-and-groove joints.
Subject:	households furniture
Credit:	Gift of Pearl Evelyn Moore, Banff, 1979
Catalogue Number:	102.03.0033

## Images



This material is presented as originally created; it may contain outdated cultural descriptions and potentially offensive content. [Read more.](#)



## Vase

<https://archives.whyte.org/en/permalink/artifact102.04.1002>

Title:	Vase
Date:	1890 – 1910
Material:	ceramic
Dimensions:	14.7 x 8.7 cm
Description:	Ex Banff Sanitarium, drainage holes in base, white china, wide red-purple band outlined with gold lines, stamped brown "Banff Sanitarium" crest (belt forming oval shape) on front, 5 cm drainage holes in base, very simple shape, lip gently flaring from wide neck and slightly bulbous belly, gold line around foot and lip
Subject:	Banff Sanitarium Dr. Brett
Credit:	Gift of Mr. and Mrs. Norman Tabuteau, Banff, 1966
Catalogue Number:	102.04.1002

## Images



This material is presented as originally created; it may contain outdated cultural descriptions and potentially offensive content. [Read more.](#)



## Vase

<https://archives.whyte.org/en/permalink/artifact102.04.1008>

Title: Vase

Date: 1890 – 1910

Material: ceramic

Dimensions: 12.2 cm

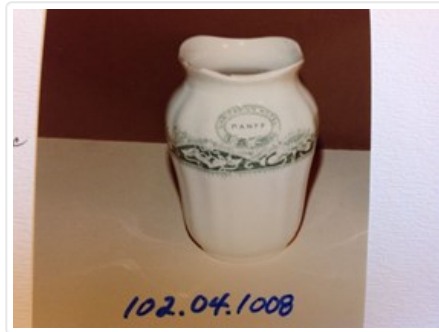
Description: white and green, ex Banff Sanitarium Hotel, white, band of sunflowers and waterlilies against scalloped green background, "Sanitarium Hotel/Banff" written in crest (belt in oval shape stamped on shoulder above band, small simple shape with slightly ribbed sides and high shoulders closing in to wide mouth and small undulating lip, trademark crest stamped on base noting it is "porcelain opaque"

Subject: institutions  
Banff Sanitarium  
Dr. Brett

Credit: Gift of Forrest (Pat) Oliver Brewster, Banff, 1966

Catalogue Number: 102.04.1008

## Images



This material is presented as originally created; it may contain outdated cultural descriptions and potentially offensive content. [Read more.](#)



## Vase

<https://archives.whyte.org/en/permalink/artifact102.04.0244>

Title:	Vase
Date:	1832 – 1832
Material:	ceramic
Dimensions:	8.9 x 9.0 cm
Description:	Hand thrown, trim-footed, jar with 2.6 cm. diameter neck. Wax resist applied (probably) before glazing, Dominant green calligraphy and miscellaneous objects in design with yellow, red, white, pale green and deep blue trim. Red-bordered label in E.S. Morse's writing says "China, age 1832" and number resembling "707".
Subject:	households decorative Chinese E. S. Morse
Credit:	Gift of Catharine Robb Whyte, O. C., Banff, 1979
Catalogue Number:	102.04.0244

## Images



This material is presented as originally created; it may contain outdated cultural descriptions and potentially offensive content. [Read more.](#)





## Vase

<https://archives.whyte.org/en/permalink/artifact102.04.0272%20a%2cb>

Title:	Vase
Date:	1890 – 1900
Material:	metal
Dimensions:	11.2 x 9.3 cm
Description:	One large (A) and one small (B) vase, each pear shaped with flared rim and neither having footed base but, rather, a rounded bottom. (A) stamped writing near rim, rim folded over. (B) rim folded over and 6.0 cm. section missing - probably broken off.
Subject:	households decorative
Credit:	Gift of Catharine Robb Whyte, O. C., Banff, 1979
Catalogue Number:	102.04.0272 a,b

## Images



This material is presented as originally created; it may contain outdated cultural descriptions and potentially offensive content. [Read more.](#)



## Vase

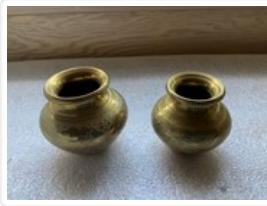
<https://archives.whyte.org/en/permalink/artifact102.04.0273>

Title:	Vase
Date:	1890 – 1900
Material:	metal
Dimensions:	9.5 x 8.5 cm
Description:	Squat, bulbous vases with flared rims. Collared where neck joins body. Seam can be seen on body of (A). Round versus flat bottomed.
Subject:	households decorative
Credit:	Gift of Catharine Robb Whyte, O. C., Banff, 1979
Catalogue Number:	102.04.0273

## Images



This material is presented as originally created; it may contain outdated cultural descriptions and potentially offensive content. [Read more.](#)



## Vase

<https://archives.whyte.org/en/permalink/artifact102.04.0274%20a%2cb>

Title:	Vase
Date:	1890 – 1900
Material:	metal
Dimensions:	7.8 x 8.5 cm
Description:	Urn shaped containers with wide-lipped rims. (A) tooled peacock and flower decoration with other line decoration, orange (B) tooled diagonal diamond and line decoration, ornate.
Subject:	households decorative
Credit:	Gift of Catharine Robb Whyte, O. C., Banff, 1979
Catalogue Number:	102.04.0274 a,b

## Images



This material is presented as originally created; it may contain outdated cultural descriptions and potentially offensive content. [Read more.](#)



## Vase

<https://archives.whyte.org/en/permalink/artifact102.04.0275>

Title:	Vase
Date:	1890 – 1900
Material:	metal
Dimensions:	10.7 x 10.4 cm
Description:	Bulbous container with wide-lipped rim. Crosshatch and other tooled line decoration throughout exterior. Small areas of copper visible.
Subject:	households decorative
Credit:	Gift of Catharine Robb Whyte, O. C., Banff, 1979
Catalogue Number:	102.04.0275

## Images



This material is presented as originally created; it may contain outdated cultural descriptions and potentially offensive content. [Read more.](#)



## Vase

<https://archives.whyte.org/en/permalink/artifact102.04.0276>

Title:	Vase
Date:	1890 – 1900
Material:	metal
Dimensions:	9.0 x 9.5 cm
Description:	Bulbous container with short neck, flared rim. Seam at centre of body, two decorative lines on shoulder, one line decoration on inside rim.
Subject:	households decorative
Credit:	Gift of Catharine Robb Whyte, O. C., Banff, 1979
Catalogue Number:	102.04.0276

## Images



This material is presented as originally created; it may contain outdated cultural descriptions and potentially offensive content. [Read more.](#)

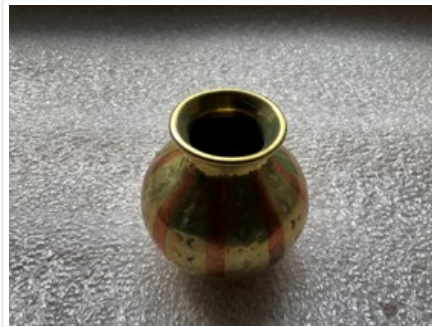


## Vase

<https://archives.whyte.org/en/permalink/artifact102.04.0277>

Title:	Vase
Date:	1890 – 1900
Material:	metal
Dimensions:	5.9 x 6.3 cm
Description:	Bulbous container with flared rim. Copper on base and in alternating panels, line and geometric designs throughout exterior.
Subject:	households decorative
Credit:	Gift of Catharine Robb Whyte, O. C., Banff, 1979
Catalogue Number:	102.04.0277

## Images



This material is presented as originally created; it may contain outdated cultural descriptions and potentially offensive content. [Read more.](#)



## Vase

<https://archives.whyte.org/en/permalink/artifact102.04.0278>

Title:	Vase
Date:	1890 – 1900
Material:	metal
Dimensions:	7.7 x 10.0 cm
Description:	Footed, squat bulbous container with flared rim. Vertical, alternating panel design with leaves, other leaf border trim and line designs.
Subject:	households decorative
Credit:	Gift of Catharine Robb Whyte, O. C., Banff, 1979
Catalogue Number:	102.04.0278

## Images



This material is presented as originally created; it may contain outdated cultural descriptions and potentially offensive content. [Read more.](#)