



Accessories Guitar Accessories

<https://archives.whyte.org/en/permalink/artifact104.34.0008%20a-m>

Title: Accessories Guitar Accessories

Date: 1930 – 1950

Material: metal; wood; ivory; plastic

Dimensions: 3.4 cm

Description: A collection of odd guitar accessories. (a) finger pick set (3.4 x 2.0 diam) four metal frames that fit over the finger tip, Y-shaped with the arms of the Y forming an adjustable band that fits around finger, and the stem of the Y passing up over the tip of the finger and down the back halfway to the band, tip is crimped in stiff fold, 3 have solder at the tip to form a longer point. (MFG: Fitrite). (b) finger pick set (2.5 x 1.8 x 2.0) six metal rings that fit over the finger tips, adjustable band has circles cut out along it, flame shaped fingernail rises from band, curling inward slightly, and with cut out circle at middle. (mfg: National) (c) finger pick (2.5 x 1.9 x 2.0) as (b) but without cut out circles (mfg: Artisto) (d) finger picks (3.0 x 1.7 x 1.9) two metal bands that wrap around finger tip, widening near the end, then narrowing to a point that extends off to one side of the finger. (e) finger picks (3.5 x 1.5 x 1.9) two flat ivory bands which curl once around finger tip and extend out to one side in a point. (f) pick (3.2 x 2.3 x .1) small, flat, egg shaped, marbleized, grey plastic, stiff. (mfg: Durro). (g) pick (3.0 x 2.2 x .1) as (f) but brown tortoise shell coloured plastic (mfg: Eureka). (h) pick (2.7 x 1.9 x .1) as (f) but transparent yellowed plastic ?, slightly curled. (i) capo (5.3 x 1.9 x .9) flat metal bar with small hooks at either end to hold tightly coiled spring across the under side, lined underneath bar with cork. (mfg: Elton). j) bridge ? (4.7 x .8 x 1.1) a long, half round, hollow metal bar with six incised rings spaced evenly along the length. (mfg: Kamiki). (k) slides (7.2 x 1.7 diam) two heavy, solid, brass rods (used to slide over strings when playing the guitar Hawaiian style) (l) peg (5.0 x .9 x 2.3) white, cast plastic peg with long shaft and flattened key with finger depression each side, ferrules around top of shaft. (m) bridge (4.7 x 1.4 x 1.9) low, unfinished wood bridge with small dark support perpendicularly across under middle, short legs thicken slightly at base, series of small notches across top, some deliberately cut into wood, some worn in odd places from strings (mfg: Grover).

Subject: Whyte home
households
entertainment
pastime
Annie White
music
accessories
equipment
sound
song

Credit: Gift of Catharine Robb Whyte, O. C., Banff, 1979

Catalogue Number: 104.34.0008 a-m

Images



This material is presented as originally created; it may contain outdated cultural descriptions and potentially offensive content. [Read more.](#)



Accessories Guitar Accessories

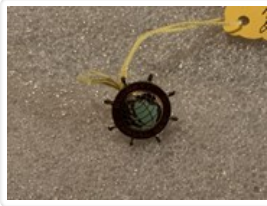
<https://archives.whyte.org/en/permalink/artifact104.34.0009%20a-e>

Title:	Accessories Guitar Accessories
Date:	1930 – 1950
Material:	wood; plastic
Dimensions:	5.0 x 1.3 x 0.5 cm
Description:	A collection of odd, stringed instrument accessories. (a) bridge (5.0 x 1.3 x .5) long, squared, wood, with low legs thicker at base, four shallow notches evenly spaced across top, for ukulele?(b) bridge (4.4 x 1.7 x .6) as (a) but taller and not as long. (c) bridge (2.7 x 2.1 x .3) a small, high, yellowed, glass like bridge with arced top, and arch under between legs, curved in at sides, and four shallow notches across top. (d) pegs (15.9 x .9 x 1.9) three plain, wooden tuning pegs with straight, tapering shafts, and simple round flat keys at top with depressions for fingers to grasp, small slit cut across bottom, impressed marks from strings around bottom. (e)pick guard (7.8 x 5.2) small, lyre shaped form cut from a thin sheet of tortoiseshell patterned plastic, two pinholes at stem where broken off from something else (a bracket?).
Subject:	Whyte home households entertainment pastime Annie White music accessories equipment sound song;
Credit:	Gift of Catharine Robb Whyte, O. C., Banff, 1979
Catalogue Number:	104.34.0009 a-e

Images



This material is presented as originally created; it may contain outdated cultural descriptions and potentially offensive content. [Read more.](#)

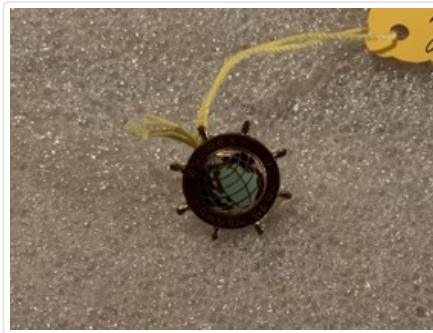


Advertising Pin

<https://archives.whyte.org/en/permalink/artifact105.01.0004>

Title:	Advertising Pin
Date:	1930 – 1960
Material:	metal; enamel
Dimensions:	1.1 cm
Description:	A circular pin in the shape of a spoked ship's wheel with an enamelled map of the world at the centre. There is a red band around the map with the words "Everett Travel Service" spaced evenly around the circle. The pin has a large stud clasp back.
Subject:	tourism travel Everett Travel Service uniforms
Credit:	Gift of Pearl Evelyn Moore, Banff, 1979
Catalogue Number:	105.01.0004

Images



This material is presented as originally created; it may contain outdated cultural descriptions and potentially offensive content. [Read more.](#)



Alarm Clock

<https://archives.whyte.org/en/permalink/artifact104.47.1006>

Title:	Alarm Clock
Date:	1930 – 1960
Material:	wood; glass; metal
Dimensions:	15.8 x 3.9 x 21.2 cm
Description:	Alarm clock with metal case and rounded wooden frame that sits on halved, flattened dowels. The face of the clock is covered with convex glass. The face of the clock has a small dial used to set the alarm time underneath the "12". The center of the clock has metal hands and "Mayfair." The back of the clock has keys to wind the clock, set the time and a knob to turn on and off the alarm.
Subject:	households Helen Shandruk
Credit:	Gift of Helen Shandruk, Banff, 2001
Catalogue Number:	104.47.1006

Images



This material is presented as originally created; it may contain outdated cultural descriptions and potentially offensive content. [Read more.](#)



Alpenstock

<https://archives.whyte.org/en/permalink/artifact108.04.0023%20a%2cb>

Title:	Alpenstock
Date:	1930 – 1935
Material:	wood; metal
Dimensions:	2.0 x 10.5 x 160.5 cm
Description:	Two long wooden staffs with cast metal crooks painted black at the top, and metal collars, 9.0 cm, with long spikes of metal, 4.0 cm, at the tip. Metal crooks are cast to represent chamois horn, the staffs are of hickory.
Subject:	activities hiking climbing
Credit:	Gift of Catharine Robb Whyte, O. C., Banff, 1979
Catalogue Number:	108.04.0023 a,b

Images



This material is presented as originally created; it may contain outdated cultural descriptions and potentially offensive content. [Read more.](#)



Alpenstock

<https://archives.whyte.org/en/permalink/artifact108.04.1011>

Title:	Alpenstock
Date:	1930 – 1940
Material:	wood; metal
Dimensions:	160.0 cm
Description:	Long varnished hickory staff with cast iron crook. Crook is painted black and designed to resemble tip of ibex horn. 8.5 cm metal collar around bottom with 4.0 sturdy spike at end. Stamped into bottom of collar "Geze Hulsenfitz L.P.F."
Subject:	sports climbing George Vaux Sky Line Trail Hikers
Credit:	Gift of George Vaux, Philadelphia, USA, 1972
Catalogue Number:	108.04.1011

This material is presented as originally created; it may contain outdated cultural descriptions and potentially offensive content. [Read more.](#)



Alpenstock

<https://archives.whyte.org/en/permalink/artifact108.04.1026%20a%2cb>

Title:	Alpenstock
Date:	1930 – 1940
Material:	wood; metal
Dimensions:	162.0 cm
Description:	Long wooden shafts with metal crooks and spikes. (a) Painted black crook, some paint worn off. 2.7 cm wide silver band with emblem of boot and alpenstock and SLTH CR, screwed on to shaft. "Birks Sterling" stamped on bottom edge, round spike. 8.6 wide metal collar, 2 copper nails at top edge. (b) same as (a) but without silver band. "Geze Hulsensfitze C.P.F." stamped on metal spike end.
Subject:	sports climbing hiking Sky Line Trail Hikers Canadian Rockies SLTHCR
Credit:	Gift of Joe A. Brewster, Banff, 1980
Catalogue Number:	108.04.1026 a,b

This material is presented as originally created; it may contain outdated cultural descriptions and potentially offensive content. [Read more.](#)



Alpine Skis

<https://archives.whyte.org/en/permalink/artifact108.04.0032%20a%2cb>

Title: Alpine Skis
Date: 1930 – 1950
Material: wood; metal
Dimensions: 9.0 x 135.0 cm
Description: Heavy, short skis, with metal toe plate and bindings. They become thicker at the beautifully curved tip. Metal edging is screwed on, holes going in through the skis below the bindings. The binding is "ATTENHOFFER'S ALPINA".
Subject: activities
sports
winter
skiing
Credit: Gift of Catharine Robb Whyte, O. C., Banff, 1979
Catalogue Number: 108.04.0032 a,b

This material is presented as originally created; it may contain outdated cultural descriptions and potentially offensive content. [Read more.](#)



Alpine Skis

<https://archives.whyte.org/en/permalink/artifact108.04.1099%20a%2cb>

Title: Alpine Skis
Date: 1930 – 1940
Material: wood; metal
Dimensions: 7.0 x 190.0 cm
Description: Pair of home made unpainted skis. Very little camber, in fact practically flat. Rounded point. Metal screwed on edges, metal bindings "Ramy-Wike made in France".
Subject: sports
winter
skiing
Credit: Gift of Eddie Hunter, Banff, 1995
Catalogue Number: 108.04.1099 a,b

This material is presented as originally created; it may contain outdated cultural descriptions and potentially offensive content. [Read more.](#)



Alpine Skis

<https://archives.whyte.org/en/permalink/artifact108.04.0033%20a%2cb>

Title:	Alpine Skis
Date:	1930 – 1950
Material:	wood; metal
Dimensions:	7.5 x 200.0 cm
Description:	Wood skis with screwed on metal edges," Monarch" and under toe is embossed " Northland, USA Laconia N.H." Binding is " Monarch/Automatic".
Subject:	activities sports winter skiing
Credit:	Gift of Catharine Robb Whyte, O. C., Banff, 1979
Catalogue Number:	108.04.0033 a,b

This material is presented as originally created; it may contain outdated cultural descriptions and potentially offensive content. [Read more.](#)



Andiron

<https://archives.whyte.org/en/permalink/artifact102.07.0017%20a%2cb>

Title:	Andiron
Date:	1930 – 1932
Material:	metal
Dimensions:	17.0 x 10.0 x 55.0 cm
Description:	A pair of andirons made of railroad rail (original CPR rail), cut to length, and a cutout made from under the leading part of the rail so that they have bent up at the front to keep the logs in.
Subject:	households
Credit:	Gift of Catharine Robb Whyte, O. C., Banff, 1979
Catalogue Number:	102.07.0017 a,b

Images



This material is presented as originally created; it may contain outdated cultural descriptions and potentially offensive content. [Read more.](#)



Animal Figurine

<https://archives.whyte.org/en/permalink/artifact107.01.0018%20a%2cb>

Title:	Animal Figurine
Date:	1930 – 1960
Material:	ceramic
Dimensions:	8.3 (a); 13.0 (b) x 12.0 (a); 8.3 (b) cm
Description:	Two white ceramic figurines of spotted dogs on thick dark bases with a thin line around the bottom of each base. a) A dog lying down, with its tail curled around its body, and head lifted. The dog has a narrow collar and a dark muzzle. b) A dog sitting with its head turned to side. The dog has a dark muzzle, a narrow collar with a pendant, and a chain looped around its shoulders.
Subject:	households collectables animals, dogs
Credit:	Gift of Pearl Evelyn Moore, Banff, 1979
Catalogue Number:	107.01.0018 a,b

Images



This material is presented as originally created; it may contain outdated cultural descriptions and potentially offensive content. [Read more.](#)



Animal Figurine

<https://archives.whyte.org/en/permalink/artifact107.01.0031>

Title:	Animal Figurine
Date:	1930 – 1960
Material:	ceramic
Dimensions:	8.5 cm
Description:	A ceramic reddish-brown squirrel standing on its hind legs and holding an acorn up in its forepaws next to its face. The bottom is marked "Beatrix Potter's Squirrel Nutkin Beswick, England 18c Copyright."
Subject:	households collectables animals, squirrel children Beatrix Potter literary characters
Credit:	Gift of Pearl Evelyn Moore, Banff, 1979
Catalogue Number:	107.01.0031

Images



This material is presented as originally created; it may contain outdated cultural descriptions and potentially offensive content. [Read more.](#)



Animal Figurine

<https://archives.whyte.org/en/permalink/artifact107.01.0084>

Title:	Animal Figurine
Date:	1930 – 1940
Material:	metal, bronze; ivory
Dimensions:	5.0 x 14.0 cm
Description:	A bronze charging bull with its tail raised and its head down and slightly turned to one side. The bull has a broad snout, curly hair on its head, and curved ivory horns. The bull has been cast with features and hair texture showing in detail including cloven hooves. The figurine's black patina worn at high points showing bronze colour through.
Subject:	households souvenirs collectables animals, bovine
Credit:	Gift of Pearl Evelyn Moore, Banff, 1979
Catalogue Number:	107.01.0084

Images



This material is presented as originally created; it may contain outdated cultural descriptions and potentially offensive content. [Read more.](#)



Animal Figurine

<https://archives.whyte.org/en/permalink/artifact107.01.0085%20a%2cb>

Title:	Animal Figurine
Date:	1930 – 1940
Material:	wood; ivory
Dimensions:	14.0 x 6.7 x 12.5 cm
Description:	Two nearly identical carved wooden elephants with ivory tusks and inlaid ivory eyes. Each elephant is standing with its trunk hanging to the ground and slightly curled under at the end. The grain of wood is vertical with end grain showing as stippled texture on the back and under the belly. Each elephant has a grooved crease carved in the top of its head, two creases in each ear, and three along each side.
Subject:	households animals, elephants collectables souvenirs
Credit:	Gift of Pearl Evelyn Moore, Banff, 1979
Catalogue Number:	107.01.0085 a,b

Images



This material is presented as originally created; it may contain outdated cultural descriptions and potentially offensive content. [Read more.](#)



Animal Figurine

<https://archives.whyte.org/en/permalink/artifact107.01.0087>

Title:	Animal Figurine
Date:	1930 – 1940
Material:	ceramic
Dimensions:	3.5 x 5.5 x 8.8 cm
Description:	Scarab beetle carved from a lump of terracotta with its head and legs in relief on sides with smoothly curved back shell incised with outlines of wings. The bottom of the base has a flat incised pictograph of a beetle at the bottom inside a large oval shape with cross-hatched rectangle above him and circle above that, and two long triangular shapes at each side of the oval. The figurine is glazed with green-blue slip.
Subject:	households animals, insects collectables souvenirs
Credit:	Gift of Pearl Evelyn Moore, Banff, 1979
Catalogue Number:	107.01.0087

Images



This material is presented as originally created; it may contain outdated cultural descriptions and potentially offensive content. [Read more.](#)



Animal Figurine

<https://archives.whyte.org/en/permalink/artifact107.01.0088>

Title:	Animal Figurine
Date:	1930 – 1940
Material:	wood
Dimensions:	5.0 x 14.0 cm
Description:	Three carved wooden monkeys seated in group. The monkey at the centre facing front, has hands covering eyes (see no evil), monkey at left facing to that side has hands covering mouth (speak no evil), monkey at right facing to that side has hands covering ears (hear no evil).
Subject:	households animals, monkeys crafts carving
Credit:	Gift of Pearl Evelyn Moore, Banff, 1979
Catalogue Number:	107.01.0088

Images



This material is presented as originally created; it may contain outdated cultural descriptions and potentially offensive content. [Read more.](#)



Apron

<https://archives.whyte.org/en/permalink/artifact103.05.1101>

Title:	Apron
Date:	1800 – 1880
Material:	fibre
Dimensions:	65.0 x 74.0 cm
Description:	Embroidered black silk, gathered at the top onto band, folded under, made of three panels of silk, centre panel 42.0 wide and side panels 20.0 with 6.0 of that turned to back, embroidery done with single thread in shades of green, brown and pale yellow, blue and melon, flowers and leaves in two panels down and wider panel across
Subject:	households clothing Quaker Mary Schaffer Warren Serena Potts
Credit:	Gift of Charles C. Reid, Banff, Alberta, 1986
Catalogue Number:	103.05.1101

Images



This material is presented as originally created; it may contain outdated cultural descriptions and potentially offensive content. [Read more.](#)



Ashtray

<https://archives.whyte.org/en/permalink/artifact102.04.0158>

Title:	Ashtray
Date:	1938 – 1938
Material:	plaster
Dimensions:	5.0 x 13.5 x 14.3 cm
Description:	An ashtray in the shape of a wagon wheel and decorated with a three dimensional bison skull and highlighted with brown paint. The ashtray is scorched from use, and the bison's left horn broken and missing. The words "J Fuller '38'" are on one side of the ashtray, and "Made in Banff Can" is on the base.
Subject:	households decorative smoking
Credit:	Gift of Pearl Evelyn Moore, Banff, 1979
Catalogue Number:	102.04.0158

Images



This material is presented as originally created; it may contain outdated cultural descriptions and potentially offensive content. [Read more.](#)



Athletic Crest

<https://archives.whyte.org/en/permalink/artifact105.02.1043%20a-d>

Title:	Athletic Crest
Date:	1932
Material:	fibre; metal
Description:	Banff Winter Sports crests with Motor Cycle Hill pins attached. Crest (16.0 in diameter) is white with purple border. purple letters around outside spell "Banff Winter Sports". An inner circle is centred by a ram's head in blue. (c,d) The attached pin is yellow with a green ribbon, on the pin is written in black "Motor Cycle Hill Climb and Regatta, Banff, 1932".
Subject:	events Banff Winter Sports Motor Cycle Hill Climb and Regatta
Credit:	Gift of Karin MacAulay, Banff, 1979
Catalogue Number:	105.02.1043 a-d

Images



This material is presented as originally created; it may contain outdated cultural descriptions and potentially offensive content. [Read more.](#)