



### Sauce Dish

<https://archives.whyte.org/en/permalink/artifact104.20.0259>

Title:	Sauce Dish
Date:	1870 – 1890
Material:	ceramic
Dimensions:	2.5 x 5.9 cm
Description:	Porcelain with gold, blue, red over glaze enamels. Design consists of gourd, birds, wild cherries, fan, calligraphy. Trimmed foot with blue border design. Signed base. Bowl rim trimmed in gold and indented in five places to create scallop design.
Subject:	Whyte home households Edith Morse Robb Edward S. Morse
Credit:	Gift of Catharine Robb Whyte, O. C., Banff, 1979
Catalogue Number:	104.20.0259

### Images



This material is presented as originally created; it may contain outdated cultural descriptions and potentially offensive content. [Read more.](#)



## Sauce Dish

<https://archives.whyte.org/en/permalink/artifact104.20.0260>

Title:	Sauce Dish
Date:	1870 – 1890
Material:	ceramic
Dimensions:	2.7 x 6.0 cm
Description:	Small porcelain dish with gold, black, orange over glaze enamels. Sun scene with crane and pine. Trimmed foot with cobalt border design, signed base. Writing: Shigara (the drawer).
Subject:	Whyte home households Edith Morse Robb Edward S. Morse
Credit:	Gift of Catharine Robb Whyte, O. C., Banff, 1979
Catalogue Number:	104.20.0260

## Images



This material is presented as originally created; it may contain outdated cultural descriptions and potentially offensive content. [Read more.](#)



## Sauce Dish

<https://archives.whyte.org/en/permalink/artifact104.20.0261>

Title:	Sauce Dish
Date:	1870 – 1890
Material:	ceramic
Dimensions:	2.4 x 6.2 cm
Description:	Porcelain dish with gold, black over glaze enamels in carp and plant design. Trimmed foot with cobalt border design, signed base. Writing: Sei Getsu Ga (artist)
Subject:	Whyte home households Edith Morse Robb Edward S. Morse
Credit:	Gift of Catharine Robb Whyte, O. C., Banff, 1979
Catalogue Number:	104.20.0261

## Images



This material is presented as originally created; it may contain outdated cultural descriptions and potentially offensive content. [Read more.](#)



## Sauce Dish

<https://archives.whyte.org/en/permalink/artifact104.20.0262>

Title:	Sauce Dish
Date:	1870 – 1890
Material:	ceramic
Dimensions:	2.9 x 6.0 cm
Description:	Small porcelain dish with black, green, yellow over glaze enamels. Turtles, water lilies and shoreline design. Trimmed foot with cobalt border design, signed base. Writing: Shunzan Hitsu (artist).
Subject:	Whyte home households Edith Morse Robb Edward S. Morse
Credit:	Gift of Catharine Robb Whyte, O. C., Banff, 1979
Catalogue Number:	104.20.0262

## Images



This material is presented as originally created; it may contain outdated cultural descriptions and potentially offensive content. [Read more.](#)



## Sauce Dish

<https://archives.whyte.org/en/permalink/artifact104.20.0263>

Title:	Sauce Dish
Date:	1870 – 1890
Material:	ceramic
Dimensions:	2.5 x 5.9 cm
Description:	Small porcelain dish with gold and blue over glaze enamels, with Japanese sun fan and calligraphy design. Trimmed foot with cobalt border design, signed base. Writing: Nani Wa - old name for city of Osaka. Enoshima (artist).
Subject:	Whyte home households Edith Morse Robb Edward S. Morse
Credit:	Gift of Catharine Robb Whyte, O. C., Banff, 1979
Catalogue Number:	104.20.0263

## Images



This material is presented as originally created; it may contain outdated cultural descriptions and potentially offensive content. [Read more.](#)



## Sauce Dish

<https://archives.whyte.org/en/permalink/artifact104.20.0264>

Title:	Sauce Dish
Date:	1870 – 1890
Material:	ceramic
Dimensions:	2.7 x 6.5 cm
Description:	Porcelain dish with gold, red, green over glaze enamels. Design of man with broom and keg of sake on the inside of bowl. Trimmed foot, cobalt border design.
Subject:	households Edith Morse Robb Edward S. Morse figure male
Credit:	Gift of Catharine Robb Whyte, O. C., Banff, 1979
Catalogue Number:	104.20.0264

## Images



This material is presented as originally created; it may contain outdated cultural descriptions and potentially offensive content. [Read more.](#)



## Sauce Dish

<https://archives.whyte.org/en/permalink/artifact104.20.0272>

Title:	Sauce Dish
Date:	1870 – 1890
Material:	ceramic
Dimensions:	3.6 x 8.4 cm
Description:	Sauce dish with an orange and brown glaze, a trimmed foot, and a pouring spout on rim.
Subject:	Whyte home households Edith Morse Robb Edward S. Morse
Credit:	Gift of Catharine Robb Whyte, O. C., Banff, 1979
Catalogue Number:	104.20.0272

## Images



This material is presented as originally created; it may contain outdated cultural descriptions and potentially offensive content. [Read more.](#)



## Sauce Dish

<https://archives.whyte.org/en/permalink/artifact104.20.0286>

Title:	Sauce Dish
Date:	1870 – 1890
Material:	ceramic
Dimensions:	1.8 x 6.8 x 9.3 cm
Description:	Shell shaped porcelain dish with cobalt slip and transparent over glaze. Painted decoration of 2 handled pots and birds. Glaze abraded in bowl.
Subject:	Whyte home households Edith Morse Robb Edward S. Morse
Credit:	Gift of Catharine Robb Whyte, O. C., Banff, 1979
Catalogue Number:	104.20.0286

## Images



This material is presented as originally created; it may contain outdated cultural descriptions and potentially offensive content. [Read more.](#)





## Sauce Dish

<https://archives.whyte.org/en/permalink/artifact104.20.0290>

Title:	Sauce Dish
Date:	1870 – 1890
Material:	ceramic
Dimensions:	1.0 x 7.6 cm
Description:	A small plate with 3 cobalt slip cranes in design, transparent overglaze.
Subject:	Whyte home households Edith Morse Robb Edward S. Morse animal crane
Credit:	Gift of Catharine Robb Whyte, O. C., Banff, 1979
Catalogue Number:	104.20.0290

## Images



This material is presented as originally created; it may contain outdated cultural descriptions and potentially offensive content. [Read more.](#)



## Sauce Dish

<https://archives.whyte.org/en/permalink/artifact104.20.0299>

Title:	Sauce Dish
Date:	1870 – 1890
Material:	ceramic
Dimensions:	2.6 x 6.4 cm
Description:	Gold lustre butterfly design in and outside of dish. Pink slip with centre yellow and green enamel over glaze flower centre , pink represents petals. Crack runs from rim to rim through base. Rim has been tool shaped and applied with gold lustre, cobalt signature on bottom. Writing: Kanzan seisei or Kanzan sehseh or Kanzan sese.
Subject:	households Edith Morse Robb Edward S. Morse Kanzan
Credit:	Gift of Catharine Robb Whyte, O. C., Banff, 1979
Catalogue Number:	104.20.0299

## Images



This material is presented as originally created; it may contain outdated cultural descriptions and potentially offensive content. [Read more.](#)



## Sauce Dish

<https://archives.whyte.org/en/permalink/artifact104.20.0313>

Title:	Sauce Dish
Date:	1870 – 1890
Material:	ceramic
Dimensions:	2.8 x 7.0 cm
Description:	Roughly trimmed foot, beige slip, showing oxide pitting, with red and green over glaze enamels. Calligraphy inside bowl. Floral design on exterior. 3 chips in rim. Signature stamp on bottom.
Subject:	households
	Edith Morse Robb
	Edward S. Morse
Credit:	Gift of Catharine Robb Whyte, O. C., Banff, 1979
Catalogue Number:	104.20.0313

## Images



This material is presented as originally created; it may contain outdated cultural descriptions and potentially offensive content. [Read more.](#)



## Sauce Dish

<https://archives.whyte.org/en/permalink/artifact104.20.0317>

Title:	Sauce Dish
Date:	1870 – 1890
Material:	ceramic
Dimensions:	2.5 x 6.4 x 7.0 cm
Description:	Possibly slab based, handled, bowl with green, brightly coloured glaze. Quickly thrown and trimmed.
Subject:	households Edith Morse Robb Edward S. Morse
Credit:	Gift of Catharine Robb Whyte, O. C., Banff, 1979
Catalogue Number:	104.20.0317

## Images



This material is presented as originally created; it may contain outdated cultural descriptions and potentially offensive content. [Read more.](#)

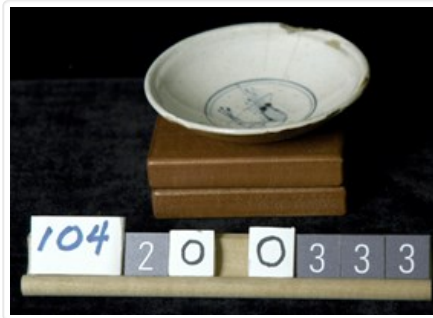


## Sauce Dish

<https://archives.whyte.org/en/permalink/artifact104.20.0333>

Title:	Sauce Dish
Date:	1870 – 1890
Material:	ceramic
Dimensions:	2.1 x 10.3 cm
Description:	2.0 cm. chip inside rim, 1.0 cm. chip outside rim. Inside bowl white slip with cobalt shrimp decoration within circle. Outside was tooled while being thrown, possibly temmoku, brown, glaze with mustard coloured glaze which may have been created by combination with inner white glaze. Signed on bottom.
Subject:	households Edith Morse Robb Edward S. Morse
Credit:	Gift of Catharine Robb Whyte, O. C., Banff, 1979
Catalogue Number:	104.20.0333

## Images



This material is presented as originally created; it may contain outdated cultural descriptions and potentially offensive content. [Read more.](#)



## Sauce Dish

<https://archives.whyte.org/en/permalink/artifact104.20.0353>

Title:	Sauce Dish
Date:	1870 – 1935
Material:	ceramic
Dimensions:	1.8 x 6.5 x 10.7 cm
Description:	Irregular, oblong shaped dish with petal design inside and leaf design outside. Transparent glaze with cobalt slip decoration. Foot ridge shaped, entire body was press moulded.
Subject:	Whyte home households Edith Morse Robb Edward S. Morse
Credit:	Gift of Catharine Robb Whyte, O. C., Banff, 1979
Catalogue Number:	104.20.0353

## Images



This material is presented as originally created; it may contain outdated cultural descriptions and potentially offensive content. [Read more.](#)



## Sauce Dish

<https://archives.whyte.org/en/permalink/artifact104.20.0354>

Title:	Sauce Dish
Date:	1870 – 1935
Material:	ceramic
Dimensions:	2.4 x 10.8 x 13.0 cm
Description:	Dish with a transparent glaze with cobalt decoration. Landscapes in petal shaped design inside dish, outside trailing vine design and border design around ridged base, was press moulded.
Subject:	Whyte home households Edith Morse Robb Edward S. Morse
Credit:	Gift of Catharine Robb Whyte, O. C., Banff, 1979
Catalogue Number:	104.20.0354

## Images



This material is presented as originally created; it may contain outdated cultural descriptions and potentially offensive content. [Read more.](#)



## Sauce Dish

<https://archives.whyte.org/en/permalink/artifact104.20.0365>

Title:	Sauce Dish
Date:	1870 – 1935
Material:	ceramic
Dimensions:	2.3 x 7.6 cm
Description:	A small shallow bowl with a transparent glaze with cobalt landscape decoration, trimmed foot.
Subject:	Whyte home households Edith Morse Robb Edward S. Morse
Credit:	Gift of Catharine Robb Whyte, O. C., Banff, 1979
Catalogue Number:	104.20.0365

## Images



This material is presented as originally created; it may contain outdated cultural descriptions and potentially offensive content. [Read more.](#)





## Sauce Dish

<https://archives.whyte.org/en/permalink/artifact104.20.0409%20a%2cb>

Title:	Sauce Dish
Date:	1870 – 1890
Material:	wood
Dimensions:	2.3 x 10.3 cm
Description:	(a) Shallow, footed bowl, grey and gold lacquer over red, bound leaf design which extends over and under rim. 1.0 cm. crack at rim, small amount of laquer loss at rim. (b) Shallow, footed bowl, gold and black lacquer over red. Two cranes under flowering plum tree inside bowl, gold plum blossoms outside dish. Price tag "?1.00" on outside.
Subject:	households Edith Morse Robb animal bird crane Japanese Edward S. Morse
Credit:	Gift of Catharine Robb Whyte, O. C., Banff, 1979
Catalogue Number:	104.20.0409 a,b

## Images



This material is presented as originally created; it may contain outdated cultural descriptions and potentially offensive content. [Read more.](#)



## Sauce Dish

<https://archives.whyte.org/en/permalink/artifact104.20.0410%20a%2cb>

Title:	Sauce Dish
Date:	1870 – 1890
Material:	wood
Dimensions:	2.0 x 8.5 cm
Description:	Smaller dish black, gold and silver lacquer over red. Three cranes at pond. Gold lacquer loss on one rock; "+ 1.-" on sticker on bottom, gold lacquer loss on one crane. Larger dish black and gold lacquer over red. 2 turtles in water. Small stain in dish; "+1.00" on bottom, gold larger loss on one turtle.
Subject:	households Edith Morse Robb animal turtle bird crane Japanese Edward S. Morse
Credit:	Gift of Catharine Robb Whyte, O. C., Banff, 1979
Catalogue Number:	104.20.0410 a,b

## Images



This material is presented as originally created; it may contain outdated cultural descriptions and potentially offensive content. [Read more.](#)



## Sauce Dish

<https://archives.whyte.org/en/permalink/artifact104.20.0412>

Title:	Sauce Dish
Date:	1870 – 1890
Material:	wood
Dimensions:	4.7 x 11.8 x 12.4 cm
Description:	Shallow footed bowl. Deep ridged foot which is lacquered in red inside. Bowl exterior is varnished wood, bowl interior red lacquer with silver, gold and black decoration of three woman carrying twig bundles overhead. Extensive hairline cracking apparently caused by wood warpage.
Subject:	households Edith Morse Robb figure female Japanese Edward S. Morse
Credit:	Gift of Catharine Robb Whyte, O. C., Banff, 1979
Catalogue Number:	104.20.0412

## Images



This material is presented as originally created; it may contain outdated cultural descriptions and potentially offensive content. [Read more.](#)



## Sauce Dish

<https://archives.whyte.org/en/permalink/artifact104.20.0417>

Title:	Sauce Dish
Date:	1870 – 1890
Material:	ceramic
Dimensions:	6.3 x 20.0 x 21.7 cm
Description:	Shallow bowl with affixed, hand formed, irregular shaped spout, in turned rim. Was hand thrown and trimmed in coil design seen under glaze and at foot, foot is notched once. Dominant glaze color is grey with pink subtleties. Other glazes are white with rust, green, blue touches. Voids in glaze at outside rim. Bowl was probably dipped three separate times to create unique triangular design at base. Glaze crackled throughout bowl. Scorch marks can be seen in unglazed stoneware at base.
Subject:	households Edith Morse Robb Edward S. Morse Rokubei
Credit:	Gift of Catharine Robb Whyte, O. C., Banff, 1979
Catalogue Number:	104.20.0417

## Images



This material is presented as originally created; it may contain outdated cultural descriptions and potentially offensive content. [Read more.](#)