



Loving Cup

<https://archives.whyte.org/en/permalink/artifact103.09.1179>

Title:	Loving Cup
Date:	1899 – 1900
Material:	metal
Dimensions:	31.0 cm
Description:	One silver plated trophy inscribed: "Brett Trophy. Banff Curling Club. 1900. Won by". Vase-shaped with curling rock on front of base, curling brooms on either side, and flared opening. Back of trophy has etched scene of seven curlers in traditional Scottish dress playing a game outdoors with a tree and mountains in background.
Subject:	sports curling Banff Curling Club Brett family
Credit:	Gift of Margaret Blackburn, Abbotsford, 2000
Catalogue Number:	103.09.1179

Images



This material is presented as originally created; it may contain outdated cultural descriptions and potentially offensive content. [Read more.](#)



Loving Cup

<https://archives.whyte.org/en/permalink/artifact103.09.1065>

Title:	Loving Cup
Date:	1895 – 1905
Material:	metal
Dimensions:	25.0 cm
Description:	Johnstone Curling Cup handmade. Base diameter 12.6, rounded top has 7.5 long neck (made from funnel) welded to a molded muffin cup and to that is the stem. Hand written in black paint: "JOHNSTONE CURLING CUP WON BY DAVE WHITE Banff". Welded sheet metal tapered out at top. 0.5 wide metal handles shaped like a bass clef musical sign welded to side in 2 places.
Subject:	sports winter Dave White curling Johnstone
Credit:	Gift of Barbara C. Whyte, Medicine Hat, 1984
Catalogue Number:	103.09.1065

Images



This material is presented as originally created; it may contain outdated cultural descriptions and potentially offensive content. [Read more.](#)



Vase

<https://archives.whyte.org/en/permalink/artifact102.04.1002>

Title:	Vase
Date:	1890 – 1910
Material:	ceramic
Dimensions:	14.7 x 8.7 cm
Description:	Ex Banff Sanitarium, drainage holes in base, white china, wide red-purple band outlined with gold lines, stamped brown "Banff Sanitarium" crest (belt forming oval shape) on front, 5 cm drainage holes in base, very simple shape, lip gently flaring from wide neck and slightly bulbous belly, gold line around foot and lip
Subject:	Banff Sanitarium Dr. Brett
Credit:	Gift of Mr. and Mrs. Norman Tabuteau, Banff, 1966
Catalogue Number:	102.04.1002

Images



This material is presented as originally created; it may contain outdated cultural descriptions and potentially offensive content. [Read more.](#)

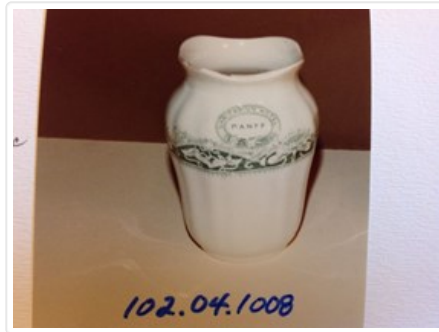


Vase

<https://archives.whyte.org/en/permalink/artifact102.04.1008>

Title:	Vase
Date:	1890 – 1910
Material:	ceramic
Dimensions:	12.2 cm
Description:	white and green, ex Banff Sanitarium Hotel, white, band of sunflowers and waterlilies against scalloped green background, "Sanitarium Hotel/Banff" written in crest (belt in oval shape stamped on shoulder above band, small simple shape with slightly ribbed sides and high shoulders closing in to wide mouth and small undulating lip, trademark crest stamped on base noting it is "porcelain opaque"
Subject:	institutions Banff Sanitarium Dr. Brett
Credit:	Gift of Forrest (Pat) Oliver Brewster, Banff, 1966
Catalogue Number:	102.04.1008

Images



This material is presented as originally created; it may contain outdated cultural descriptions and potentially offensive content. [Read more.](#)



Vase

<https://archives.whyte.org/en/permalink/artifact102.04.0272%20a%2cb>

Title:	Vase
Date:	1890 – 1900
Material:	metal
Dimensions:	11.2 x 9.3 cm
Description:	One large (A) and one small (B) vase, each pear shaped with flared rim and neither having footed base but, rather, a rounded bottom. (A) stamped writing near rim, rim folded over. (B) rim folded over and 6.0 cm. section missing - probably broken off.
Subject:	households decorative
Credit:	Gift of Catharine Robb Whyte, O. C., Banff, 1979
Catalogue Number:	102.04.0272 a,b

Images



This material is presented as originally created; it may contain outdated cultural descriptions and potentially offensive content. [Read more.](#)



Vase

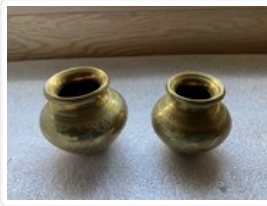
<https://archives.whyte.org/en/permalink/artifact102.04.0273>

Title:	Vase
Date:	1890 – 1900
Material:	metal
Dimensions:	9.5 x 8.5 cm
Description:	Squat, bulbous vases with flared rims. Collared where neck joins body. Seam can be seen on body of (A). Round versus flat bottomed.
Subject:	households decorative
Credit:	Gift of Catharine Robb Whyte, O. C., Banff, 1979
Catalogue Number:	102.04.0273

Images



This material is presented as originally created; it may contain outdated cultural descriptions and potentially offensive content. [Read more.](#)



Vase

<https://archives.whyte.org/en/permalink/artifact102.04.0274%20a%2cb>

Title:	Vase
Date:	1890 – 1900
Material:	metal
Dimensions:	7.8 x 8.5 cm
Description:	Urn shaped containers with wide-lipped rims. (A) tooled peacock and flower decoration with other line decoration, orange (B) tooled diagonal diamond and line decoration, ornate.
Subject:	households decorative
Credit:	Gift of Catharine Robb Whyte, O. C., Banff, 1979
Catalogue Number:	102.04.0274 a,b

Images



This material is presented as originally created; it may contain outdated cultural descriptions and potentially offensive content. [Read more.](#)



Vase

<https://archives.whyte.org/en/permalink/artifact102.04.0275>

Title:	Vase
Date:	1890 – 1900
Material:	metal
Dimensions:	10.7 x 10.4 cm
Description:	Bulbous container with wide-lipped rim. Crosshatch and other tooled line decoration throughout exterior. Small areas of copper visible.
Subject:	households decorative
Credit:	Gift of Catharine Robb Whyte, O. C., Banff, 1979
Catalogue Number:	102.04.0275

Images



This material is presented as originally created; it may contain outdated cultural descriptions and potentially offensive content. [Read more.](#)



Vase

<https://archives.whyte.org/en/permalink/artifact102.04.0276>

Title:	Vase
Date:	1890 – 1900
Material:	metal
Dimensions:	9.0 x 9.5 cm
Description:	Bulbous container with short neck, flared rim. Seam at centre of body, two decorative lines on shoulder, one line decoration on inside rim.
Subject:	households decorative
Credit:	Gift of Catharine Robb Whyte, O. C., Banff, 1979
Catalogue Number:	102.04.0276

Images



This material is presented as originally created; it may contain outdated cultural descriptions and potentially offensive content. [Read more.](#)

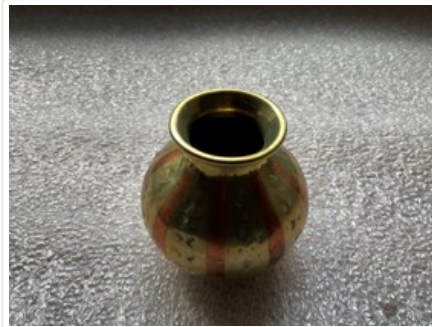


Vase

<https://archives.whyte.org/en/permalink/artifact102.04.0277>

Title:	Vase
Date:	1890 – 1900
Material:	metal
Dimensions:	5.9 x 6.3 cm
Description:	Bulbous container with flared rim. Copper on base and in alternating panels, line and geometric designs throughout exterior.
Subject:	households decorative
Credit:	Gift of Catharine Robb Whyte, O. C., Banff, 1979
Catalogue Number:	102.04.0277

Images



This material is presented as originally created; it may contain outdated cultural descriptions and potentially offensive content. [Read more.](#)



Vase

<https://archives.whyte.org/en/permalink/artifact102.04.0278>

Title:	Vase
Date:	1890 – 1900
Material:	metal
Dimensions:	7.7 x 10.0 cm
Description:	Footed, squat bulbous container with flared rim. Vertical, alternating panel design with leaves, other leaf border trim and line designs.
Subject:	households decorative
Credit:	Gift of Catharine Robb Whyte, O. C., Banff, 1979
Catalogue Number:	102.04.0278

Images



This material is presented as originally created; it may contain outdated cultural descriptions and potentially offensive content. [Read more.](#)