



Loving Cup

<https://archives.whyte.org/en/permalink/artifact103.09.0011>

Title: Loving Cup

Date: 1900 – 1900

Material: metal

Dimensions: 16.5 cm

Description: A large three handled metal cup with slightly convex sides and a flared base. Each handle starts at the cup lip with a flat thumb grip on top and attach almost at the bottom of the cup. The cup is monogrammed and dated on one side "ECG June 23rd 1900". The bottom of the cup is marked with "Reed & Barton 36".

Subject: sports

souvenirs

Credit: Gift of Pearl Evelyn Moore, Banff, 1979

Catalogue Number: 103.09.0011

Images



This material is presented as originally created; it may contain outdated cultural descriptions and potentially offensive content. [Read more.](#)



Loving Cup

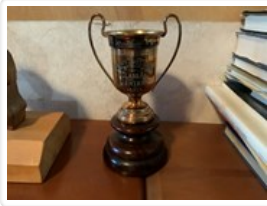
<https://archives.whyte.org/en/permalink/artifact103.09.0012>

Title:	Loving Cup
Date:	1908 – 1908
Material:	wood; metal, silver; metal, brass
Dimensions:	18.5 cm
Description:	A three-handled silver-plated loving cup with two bulges in the body and a slightly flaring lip. The cup sits on a round black wooden pedestal with crossed brass hockey sticks on the front. The front of the cup is engraved with "Rocky Mountain Park Hockey Championships 1907 presented by H. Douglas won by: The Banff Ladies Hockey Team, Feb. 1908", with the names of the team members on the reverse.
Subject:	sports, hockey sports, winter awards Pearl Moore Howard Douglas Banff National Park Rocky Mountain Park
Credit:	Gift of Pearl Evelyn Moore, Banff, 1979
Catalogue Number:	103.09.0012

Images



This material is presented as originally created; it may contain outdated cultural descriptions and potentially offensive content. [Read more.](#)



Loving Cup

<https://archives.whyte.org/en/permalink/artifact103.09.0088>

Title:	Loving Cup
Date:	1920 – 1921
Material:	wood; metal
Dimensions:	19.0 x 9.0 x 10.8 cm
Description:	Double handled trophy cup on circular, lathed, brown wooden base. Plated, metal cup is deep and slightly bells at rim. Cup engraved "Pete White, Banff Ski Club Class A junior 1921". Cup unscrews from base and reveals its manufacture stamp "Standard S' Company Limited, Toronto, Canada, A100" wooden base stamped "A96".
Subject:	sports winter ski jumping Peter Whyte
Credit:	Gift of Catharine Robb Whyte, O. C., Banff, 1979
Catalogue Number:	103.09.0088

Images



This material is presented as originally created; it may contain outdated cultural descriptions and potentially offensive content. [Read more.](#)

Loving Cup

<https://archives.whyte.org/en/permalink/artifact103.09.1189>

Title:	Loving Cup
Date:	1928 – 1929
Material:	metal; wood
Dimensions:	46.0 x 21.5 cm



Description: Two handled silver cup on black wooden base. Front of cup engraved: "Trail Riders of the Canadian Rockies. COUNTRY LIFE TROPHY for the best AMATEUR PHOTOGRAPH taken on the OFFICIAL TRAIL RIDE. Presented by REGINALD TOWNSEND" Also stamped with two circular Trail Riders emblems and manufacturer's mark: "BIRKS. STERLING" with 3 hallmarks and "11/23." Winner's names and dates engraved on back of cup and on 5 plates attached to base, from 1929 to 1999 (at time of donation).

Subject: Trail Riders of the Canadian Rockies
Reginald Townsend
photography
sports
riding
animals
horses

Credit: Gift of Trail Riders of the Canadian Rockies, Calgary, 2001

Catalogue Number: 103.09.1189

Images



This material is presented as originally created; it may contain outdated cultural descriptions and potentially offensive content. [Read more.](#)

Loving Cup



<https://archives.whyte.org/en/permalink/artifact103.09.1130%20a-k>

Title: Loving Cup

Date: 1925 – 1940

Material: metal; wood; plastic

Description: A collection of various sized loving cups. These are the keeper trophies awarded for various sporting events including golf, skiing and canoeing. a) Squat silver cup with two handles on wooden base. 19.0 cm x 18.0 cm x 12.0 cm. "1928 - 29 - 30 BBC LADIES DOUBLE SCULLS M. GRATZ & E. KNIGHT" b) Tall silver cup with two curled handles on black metal base. 24.5 x 19.0 x 8.0 cm. "BSGC LADIES ECLECTIC 1936 WON BY MRS. T.H. LONSDALE" c) Tall silver cup with two squared off handles on wide black metal base. 23.0 x 13.0 x 10.0. "Banff Springs Golf Club LADIES ECLECTIC CUP 1938 WINNER MRS. T.H. LONSDALE" d) Silver cup with two curled handles on black metal base. 22.0 x 14.0 x 7.0 cm. "BSGC LADIES ECLECTIC WINNER MRS. T.H. LONSDALE" e) Silver cup with two squared off handles on wide black metal base. 21.0 x 10.0 x 10.0 cm. "LADIES ECLECTIC BSGC 1935 MRS. T.H. LONSDALE" f) Small silver cup with tall thin handles on black metal base that is engraved "BBC 34 MIXED D.S. 1ST". 17.5 x 10.0 x 7.0. g) Small silver cup with two handles. Sits on wooden base. cup engraved with "Banff W's 1930 SKIJORING LADIES 2ND" 115.0 x 10.0 x 7.0 cm. h) Plain silver cup with two grooved handles. Sits on black plastic base. 14.0 x 8.0 x 7.0. i) small silver cup with two curved handles with points on top of wooden base. engraved with BBC LADIES 1932 DOUBLE SKULL 1ST. 14.0 x 9.0 x 6.0 cm j) Small silver cup with two handles on black metal base. Cup engraved with BTC -31- Doubles. 13.0 x 8.0 x 7.0 cm k) Small silver cup with two handles on wooden base. Cup engraved with "BBC -1935- L.D.S." 12.0 x 8.0 x 6.0 cm.

Subject: Banff Boating Club
sports
canoeing
golf
skiing
rowing
Muriel Gratz
Banff Springs Golf Club

Credit: Gift of Susan Genest, Banff, 1991

Catalogue Number: 103.09.1130 a-k

Images



This material is presented as originally created; it may contain outdated cultural descriptions and potentially offensive content. [Read more.](#)



Loving Cup

<https://archives.whyte.org/en/permalink/artifact103.09.1194%20a%2cb>

Title:	Loving Cup
Date:	1928 – 1929
Material:	metal; wood
Dimensions:	32.0 x 22.0 cm
Description:	(a) Three handled silver cup on black wooden base. Front of cup engraved: "Banff Winter Sports 1929. Lake Louise - Banff - 40 Mile Ski Race. Donated by Mrs. V. Simmons, Sydney, Australia. Won by D. Gotaas. Camrose Ski Club". Plaque on base reads: "Presented on February 8, 1929 to Paul Gotaas of the Camrose Ski Club for winning the inaugural Lake Louise to Banff 40 mile ski race. . . (b) (a)(a) (a) Accompanying wooden plaque with newspaper article reproduced on thin metal sheet: "Camrose Skier Wins 40-Mile Race" - Calgary Albertan, Saturday, February 9, 1929.Loppet
Subject:	sports skiing Camrose Ski Club Banff Winter Sports Banff Winter Festival Paul Gotaas Loppet
Credit:	Gift of Dr. Paul Gotaas, Edmonton, 2002
Catalogue Number:	103.09.1194 a,b

Images



This material is presented as originally created; it may contain outdated cultural descriptions and potentially offensive content. [Read more.](#)



Loving Cup

<https://archives.whyte.org/en/permalink/artifact103.09.1165>

Title:	Loving Cup
Date:	1920 – 1930
Material:	metal
Dimensions:	18.5 x 23.5 cm
Description:	Three handled silver plated cup. Silver plating worn in several areas. Front of cup reads: "Boxing Canadian National Parks Championship Featherweight. Donated by James I. Brewster." Manufacturer's stamp on bottom reads "Manuf'd and guaranteed by Standard "S" Co. of Toronto Canada. A 9 1/2. Electro Plated B.M."
Subject:	sports boxing G.D. Sutherland James I. Brewster
Credit:	Gift of Jim Santa Lucia, Banff, 1998
Catalogue Number:	103.09.1165

Images



This material is presented as originally created; it may contain outdated cultural descriptions and potentially offensive content. [Read more.](#)



Loving Cup

<https://archives.whyte.org/en/permalink/artifact103.09.1033>

Title:	Loving Cup
Date:	1925
Material:	metal; wood
Dimensions:	19.0 x 9.5 x 10.0 cm
Description:	Banff Winter Sports - 1925 Ski Jump. Small silver coloured cup with handles (6.6 dia.) inscribed: "Banff-W-S-1925/Ski Jump/long standing-1st" turned wood base 7.0 high x 10.0 dia.
Subject:	sports ski jumping Learn's Hill Banff Winter Sports Association
Credit:	Gift of Bill Ward, 1985
Catalogue Number:	103.09.1033

Images



This material is presented as originally created; it may contain outdated cultural descriptions and potentially offensive content. [Read more.](#)



Loving Cup

<https://archives.whyte.org/en/permalink/artifact103.09.1125%20>

Title:	Loving Cup
Date:	1923 – 1928
Material:	metal; wood
Dimensions:	60.0 cm
Description:	Large silver coloured cup on turned wooden base. Cup 38.0 high, cup has hammer beaten texture, 2 large handles, narrow curved stem on base 22.0 dia. Engraved on side "StrongHeart Trophy presented by Trimble Murfin Co. World's Champion Dog Races". On bottom "Standard Co. of Toronto Canada" Numbers "23" and "1/29" and "EPBM". Base is solid turned wood 23.0 high. Six silver shield-shaped crests on front "100 mile world's championship won by Shorty Russick 1923" "30 mile worlds championship won by Harry Knight 1924" "90 mile world's championship won by Harry Knight 1925" "1926 100 miles Ike Mills" "90 mile worlds championship won by Will Trude Warren Cordingly driver 1927" "1928 30 miles Ike Mills"
Subject:	dog sled races sports winter Harry Knight; Ike Mills Banff Winter Carnival Strongheart Trimble Murfin
Credit:	Gift of Harry (Mrs.) Knight, Fowler, USA, 1991
Catalogue Number:	103.09.1125

Images





Loving Cup

<https://archives.whyte.org/en/permalink/artifact103.09.1004>

Title:	Loving Cup
Date:	1902
Material:	metal
Description:	Fancy trophy stand with handles, rococo trim all edges, feet, inside base. Turned wood handles 9.0 on 5.5 metal arms, each side. Inside stand 12.0 high x 12.5 dia. Engraved on side "Calgary City Championship 1902 won by C.P.R. Hockey Club" with seven names. On bottom "Simpson Hall Miller & Co. quadruple place C51"
Subject:	sports winter hockey
Credit:	Gift of Forrest (Pat) Oliver Brewster, Banff, 1966
Catalogue Number:	103.09.1004

Images





Loving Cup

<https://archives.whyte.org/en/permalink/artifact103.09.1042>

Title:	Loving Cup
Date:	1920 – 1940
Material:	metal; wood
Dimensions:	29.0 x 12.0 cm
Description:	Banff Boating Club "Double Canoe Girls under 16". Fluted silver cup, rounded handles, one on each side extending half way down cup to base, wooden base.
Subject:	sports summer Banff Boating Club
Credit:	Gift of Catharine Robb Whyte, O. C., Banff, 1972
Catalogue Number:	103.09.1042

Images



This material is presented as originally created; it may contain outdated cultural descriptions and potentially offensive content. [Read more.](#)



Loving Cup

<https://archives.whyte.org/en/permalink/artifact103.09.1061>

Title:	Loving Cup
Date:	1927
Material:	metal; wood
Description:	Small silver cup with handle on turned wooden base. Inscribed on cup "Banff Winter Carnival Packers and Guides Competition presented by H.E. Sibbald"
Subject:	events Banff Winter Carnival packers and guides H.E. Sibbald
Credit:	Gift of Joe A. Brewster, Banff, 1980
Catalogue Number:	103.09.1061

Images



This material is presented as originally created; it may contain outdated cultural descriptions and potentially offensive content. [Read more.](#)



Vase

<https://archives.whyte.org/en/permalink/artifact102.04.0083>

Title: Vase
Date: 1900 – 1940
Material: metal, copper
Dimensions: 8.0 x 8.3 x 11.2 cm
Description: An urn-shaped copper plated jug or vase with two handles.
Subject: households
decorative
Credit: Gift of Pearl Evelyn Moore, Banff, 1979
Catalogue Number: 102.04.0083

Images



This material is presented as originally created; it may contain outdated cultural descriptions and potentially offensive content. [Read more.](#)



Vase

<https://archives.whyte.org/en/permalink/artifact102.04.0090%20a%2cb>

Title: Vase

Date: 1900 – 1940

Material: metal, silver; glass

Dimensions: 13.0 cm

Description: Two pressed glass posy vases. Both have flared, scallop edged, silver rims that are tarnished.

Subject: households
decorative

Credit: Gift of Pearl Evelyn Moore, Banff, 1979

Catalogue Number: 102.04.0090 a,b

Images



This material is presented as originally created; it may contain outdated cultural descriptions and potentially offensive content. [Read more.](#)



Vase

<https://archives.whyte.org/en/permalink/artifact102.04.0091>

Title:	Vase
Date:	1900 – 1940
Material:	glass
Dimensions:	12.0 x 4.8 x 4.8 cm
Description:	A cut crystal posy vase with a diamond design.
Subject:	households decorative
Credit:	Gift of Pearl Evelyn Moore, Banff, 1979
Catalogue Number:	102.04.0091

Images



This material is presented as originally created; it may contain outdated cultural descriptions and potentially offensive content. [Read more.](#)



Vase

<https://archives.whyte.org/en/permalink/artifact102.04.0096>

Title:	Vase
Date:	1900 – 1940
Material:	glass
Dimensions:	25.0 x 15.0 x 15.0 cm
Description:	A vase with a circular body that is decorated with a cut star design. The neck of the vase is pinched and flares slightly out at the top.
Subject:	households decorative
Credit:	Gift of Pearl Evelyn Moore, Banff, 1979
Catalogue Number:	102.04.0096

Images



This material is presented as originally created; it may contain outdated cultural descriptions and potentially offensive content. [Read more.](#)



Vase

<https://archives.whyte.org/en/permalink/artifact102.04.0097>

Title:	Vase
Date:	1900 – 1940
Material:	glass; paint
Dimensions:	33.5 x 10.1 x 10.1 cm
Description:	A vase with a fluted base and a narrow bottom that flares gradually to the rim. This vase features an ornate cut design that is decorated with a formal leaf design in gold. The top edge is finished with a band of plain gold.
Subject:	households decorative
Credit:	Gift of Pearl Evelyn Moore, Banff, 1979
Catalogue Number:	102.04.0097

Images



This material is presented as originally created; it may contain outdated cultural descriptions and potentially offensive content. [Read more.](#)



Vase

<https://archives.whyte.org/en/permalink/artifact102.04.0104>

Title:	Vase
Date:	1920 – 1960
Material:	glass
Dimensions:	18.0 cm
Description:	A clear glass, trumpet shaped vase with a slender fluted body flaring into a wide mouth. The body of the vase is sitting on a circular base. There is a chip on one side of the base.
Subject:	households decorative
Credit:	Gift of Pearl Evelyn Moore, Banff, 1979
Catalogue Number:	102.04.0104

Images



This material is presented as originally created; it may contain outdated cultural descriptions and potentially offensive content. [Read more.](#)



Vase

<https://archives.whyte.org/en/permalink/artifact102.04.0107>

Title:	Vase
Date:	1920 – 1960
Material:	ceramic, bone china
Dimensions:	11.5 cm
Description:	A round, white vase with a plain base flaring gently to full round shoulders with a wide straight rimmed mouth. The vase is decorated with hand painted iris, leaves, and a swallow. The dominant colours of the decoration are green, blue, and white.
Subject:	households decorative crafts
Credit:	Gift of Pearl Evelyn Moore, Banff, 1979
Catalogue Number:	102.04.0107

Images



This material is presented as originally created; it may contain outdated cultural descriptions and potentially offensive content. [Read more.](#)



Vase

<https://archives.whyte.org/en/permalink/artifact102.04.0121>

Title:	Vase
Date:	1900 – 1940
Material:	stone, marble
Dimensions:	12.0 cm
Description:	A pink marble vase with a pinched base, egg-shaped body, and a neck that flares out to the lip.
Subject:	households decorative
Credit:	Gift of Pearl Evelyn Moore, Banff, 1979
Catalogue Number:	102.04.0121

Images



This material is presented as originally created; it may contain outdated cultural descriptions and potentially offensive content. [Read more.](#)