



Loving Cup

<https://archives.whyte.org/en/permalink/artifact103.09.0011>

Title:	Loving Cup
Date:	1900 – 1900
Material:	metal
Dimensions:	16.5 cm
Description:	A large three handled metal cup with slightly convex sides and a flared base. Each handle starts at the cup lip with a flat thumb grip on top and attach almost at the bottom of the cup. The cup is monogrammed and dated on one side "ECG June 23rd 1900". The bottom of the cup is marked with "Reed & Barton 36".
Subject:	sports souvenirs
Credit:	Gift of Pearl Evelyn Moore, Banff, 1979
Catalogue Number:	103.09.0011

Images



This material is presented as originally created; it may contain outdated cultural descriptions and potentially offensive content. [Read more.](#)



Loving Cup

<https://archives.whyte.org/en/permalink/artifact103.09.0012>

Title:	Loving Cup
Date:	1908 – 1908
Material:	wood; metal, silver; metal, brass
Dimensions:	18.5 cm
Description:	<p>A three-handled silver-plated loving cup with two bulges in the body and a slightly flaring lip. The cup sits on a round black wooden pedestal with crossed brass hockey sticks on the front. The front of the cup is engraved with "Rocky Mountain Park Hockey Championships 1907 presented by H. Douglas won by: The Banff Ladies Hockey Team, Feb. 1908", with the names of the team members on the reverse.</p>
Subject:	<p>sports, hockey</p> <p>sports, winter</p> <p>awards</p> <p>Pearl Moore</p> <p>Howard Douglas</p> <p>Banff National Park</p> <p>Rocky Mountain Park</p>
Credit:	Gift of Pearl Evelyn Moore, Banff, 1979
Catalogue Number:	103.09.0012

Images



This material is presented as originally created; it may contain outdated cultural descriptions and potentially offensive content. [Read more.](#)



Loving Cup

<https://archives.whyte.org/en/permalink/artifact103.09.0016>

Title:	Loving Cup
Date:	1945 – 1955
Material:	nut, coconut
Dimensions:	16.5 x 17.5 x 24.0 cm
Description:	A trophy made from a coconut still in its husk which has been partially cut away to reveal the nut inside. The nut is highly polished and has large hole cut in the top. The nut has "Aloha Golf Tournament Moana Trophy won by Pearl Moore" carved into it. The husk has "Wapakae Golf Course Hawaii" burned into it, as well as a palm tree, and a figure wearing a grass skirt.
Subject:	sports, golf travel Pearl Moore Hawaii Aloha Golf Tournament
Credit:	Gift of Pearl Evelyn Moore, Banff, 1979
Catalogue Number:	103.09.0016

Images



This material is presented as originally created; it may contain outdated cultural descriptions and potentially offensive content. [Read more.](#)



Loving Cup

<https://archives.whyte.org/en/permalink/artifact103.09.1004>

Title:	Loving Cup
Date:	1902
Material:	metal
Description:	Fancy trophy stand with handles, rococo trim all edges, feet, inside base. Turned wood handles 9.0 on 5.5 metal arms, each side. Inside stand 12.0 high x 12.5 dia. Engraved on side "Calgary City Championship 1902 won by C.P.R. Hockey Club" with seven names. On bottom "Simpson Hall Miller & Co. quadruple place C51"
Subject:	sports winter hockey
Credit:	Gift of Forrest (Pat) Oliver Brewster, Banff, 1966
Catalogue Number:	103.09.1004

Images



This material is presented as originally created; it may contain outdated cultural descriptions and potentially offensive content. [Read more.](#)



Loving Cup

<https://archives.whyte.org/en/permalink/artifact103.09.1043%20a-e>

Title:	Loving Cup
Date:	1940 – 1970
Material:	metal; wood
Description:	International Collegiate skiing trophies. (a) Highest Team Standing, 21.5x49.0 (b) Cross Country 26.0x49.0 (c) Cross Country Team trophy 22.3x22.0 (d) Alpine Combined Trophy 21.5x24.0 (e) Bernard Macfadden Grand Ski Championship trophy with lid, cup 48.5, lid 20.0.
Subject:	sports skiing International Collegiate Ski Meet
Credit:	Gift of Evelyn Crosby, Banff, 1974
Catalogue Number:	103.09.1043 a-e

Images



This material is presented as originally created; it may contain outdated cultural descriptions and potentially offensive content. [Read more.](#)



Loving Cup

<https://archives.whyte.org/en/permalink/artifact103.09.1073>

Title:	Loving Cup
Date:	1948 – 1949
Material:	metal; wood
Dimensions:	48.8 x 27.0 cm
Description:	Deep silver cup with rim and two squared handles sits on a turned brown wooden base. Inscribed on face "Won by 1948 Gordon Morrison, on back, Edward Christianson.
Subject:	sports skiing Banff Winter Sports Association Gordon Morrison Edward Christianson
Credit:	Gift of Gerry Percy, Banff, 1984
Catalogue Number:	103.09.1073

Images



This material is presented as originally created; it may contain outdated cultural descriptions and potentially offensive content. [Read more.](#)



Vase

<https://archives.whyte.org/en/permalink/artifact102.04.0083>

Title:	Vase
Date:	1900 – 1940
Material:	metal, copper
Dimensions:	8.0 x 8.3 x 11.2 cm
Description:	An urn-shaped copper plated jug or vase with two handles.
Subject:	households decorative
Credit:	Gift of Pearl Evelyn Moore, Banff, 1979
Catalogue Number:	102.04.0083

Images



This material is presented as originally created; it may contain outdated cultural descriptions and potentially offensive content. [Read more.](#)



Vase

<https://archives.whyte.org/en/permalink/artifact102.04.0090%20a%2cb>

Title:	Vase
Date:	1900 – 1940
Material:	metal, silver; glass
Dimensions:	13.0 cm
Description:	Two pressed glass posy vases. Both have flared, scallop edged, silver rims that are tarnished.
Subject:	households decorative
Credit:	Gift of Pearl Evelyn Moore, Banff, 1979
Catalogue Number:	102.04.0090 a,b

Images



This material is presented as originally created; it may contain outdated cultural descriptions and potentially offensive content. [Read more.](#)



Vase

<https://archives.whyte.org/en/permalink/artifact102.04.0091>

Title:	Vase
Date:	1900 – 1940
Material:	glass
Dimensions:	12.0 x 4.8 x 4.8 cm
Description:	A cut crystal posy vase with a diamond design.
Subject:	households decorative
Credit:	Gift of Pearl Evelyn Moore, Banff, 1979
Catalogue Number:	102.04.0091

Images



This material is presented as originally created; it may contain outdated cultural descriptions and potentially offensive content. [Read more.](#)



Vase

<https://archives.whyte.org/en/permalink/artifact102.04.0096>

Title:	Vase
Date:	1900 – 1940
Material:	glass
Dimensions:	25.0 x 15.0 x 15.0 cm
Description:	A vase with a circular body that is decorated with a cut star design. The neck of the vase is pinched and flares slightly out at the top.
Subject:	households decorative
Credit:	Gift of Pearl Evelyn Moore, Banff, 1979
Catalogue Number:	102.04.0096

Images



This material is presented as originally created; it may contain outdated cultural descriptions and potentially offensive content. [Read more.](#)



Vase

<https://archives.whyte.org/en/permalink/artifact102.04.0097>

Title:	Vase
Date:	1900 – 1940
Material:	glass; paint
Dimensions:	33.5 x 10.1 x 10.1 cm
Description:	A vase with a fluted base and a narrow bottom that flares gradually to the rim. This vase features an ornate cut design that is decorated with a formal leaf design in gold. The top edge is finished with a band of plain gold.
Subject:	households decorative
Credit:	Gift of Pearl Evelyn Moore, Banff, 1979
Catalogue Number:	102.04.0097

Images



This material is presented as originally created; it may contain outdated cultural descriptions and potentially offensive content. [Read more.](#)



Vase

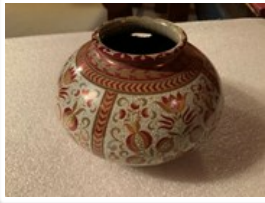
<https://archives.whyte.org/en/permalink/artifact102.04.0121>

Title:	Vase
Date:	1900 – 1940
Material:	stone, marble
Dimensions:	12.0 cm
Description:	A pink marble vase with a pinched base, egg-shaped body, and a neck that flares out to the lip.
Subject:	households decorative
Credit:	Gift of Pearl Evelyn Moore, Banff, 1979
Catalogue Number:	102.04.0121

Images



This material is presented as originally created; it may contain outdated cultural descriptions and potentially offensive content. [Read more.](#)



Vase

<https://archives.whyte.org/en/permalink/artifact102.04.0243>

Title:	Vase
Date:	1900 – 1950
Material:	ceramic
Dimensions:	7.8 cm
Description:	Hand thrown using a soft clay and low temperature firing. Squat spheroid shape with belled 5.2 diameter neck. Appears to have been covered first with white slip then iridescent olive, burgundy and mustard coloured glazes. Ornate floral design with chevron-design borders. "Zsolnay Pecs. Millenium" printed on bottom as well as "353" and Zsolnay Pecs" stamped on bottom. 2.5 x 1.8 cm, hole chipped and missing from side of bowl.
Subject:	households decorative
Credit:	Gift of Catharine Robb Whyte, O. C., Banff, 1979
Catalogue Number:	102.04.0243

Images



This material is presented as originally created; it may contain outdated cultural descriptions and potentially offensive content. [Read more.](#)



Vase

<https://archives.whyte.org/en/permalink/artifact102.04.0287%20a%2cb>

Title:	Vase
Date:	1900 – 1930
Material:	metal
Dimensions:	25.5 x 8.9 cm
Description:	One large (A) and one small (B) tall, slender vase. Both very similar in exterior appearance with circular, weighted bases, extending from which is a narrow, ridged stem which then flares out into a belled rim which is slightly wave-like in contour. (A) has scratched "Og.ex/aH,NX" on base as well as stamped three hallmarks: circle containing crown, crest containing "W" and another circle or crescent containing animal figure. Also stamped "Sterling 5079 3 oz. weighted". Vase (B) has circular ridges on base and hallmark resembling "T" superimposed on "A" followed by "Sterling 351 weighted" and scratched "5-6-117-W-E".
Subject:	households decorative
Credit:	Gift of Catharine Robb Whyte, O. C., Banff, 1979
Catalogue Number:	102.04.0287 a,b

Images



This material is presented as originally created; it may contain outdated cultural descriptions and potentially offensive content. [Read more.](#)



Vase

<https://archives.whyte.org/en/permalink/artifact102.04.0304>

Title:	Vase
Date:	1940 – 1960
Material:	glass; metal
Dimensions:	11.8 x 7.1 cm
Description:	Red tinted glass vase on short, circular base. Attached metal (pewter ?) relief dogwood floral decoration on exterior, has purple stone at flower centre.
Subject:	households decorative
Credit:	Gift of Catharine Robb Whyte, O. C., Banff, 1979
Catalogue Number:	102.04.0304

Images



This material is presented as originally created; it may contain outdated cultural descriptions and potentially offensive content. [Read more.](#)