



Beverage Set

<https://archives.whyte.org/en/permalink/artifact104.20.0145%20a-i>

Title: Beverage Set

Date: 1880 – 1920

Material: glass

Dimensions: 12.0 cm

Description: A set of nine clear crystal wine glasses. Each glass is straight sided and rounded at the bottom where it is joined to a thin tall stem and a round base. Each glass is decorated with a band of short vertical stripes etched into the side just above the midpoint (Greek key pattern) between plain horizontal bands. There are stars etched into the bottom half of the glasses.

Subject: households

social customs

Credit: Gift of Pearl Evelyn Moore, Banff, 1979

Catalogue Number: 104.20.0145 a-i

Images



This material is presented as originally created; it may contain outdated cultural descriptions and potentially offensive content. [Read more.](#)



Beverage Set

<https://archives.whyte.org/en/permalink/artifact104.20.0150%20a-k>

Title:	Beverage Set
Date:	1880 – 1920
Material:	glass
Dimensions:	8.5 cm
Description:	A set of eleven stemmed glasses. Each glass has a wide mouth that tapers to a short stem with finger tip depressions cut into the sides in three horizontal rows. The thick stems attach to a round base.
Subject:	households social customs
Credit:	Gift of Pearl Evelyn Moore, Banff, 1979
Catalogue Number:	104.20.0150 a-k

Images



This material is presented as originally created; it may contain outdated cultural descriptions and potentially offensive content. [Read more.](#)



Beverage Set

<https://archives.whyte.org/en/permalink/artifact104.20.0152%20a-h>

Title:	Beverage Set
Date:	1880 – 1920
Material:	glass
Dimensions:	11.5 cm
Description:	A set of eight clear glass glasses with narrow bottoms flaring out to the rims. Each glass has a short stem attached to a round base.
Subject:	households social customs
Credit:	Gift of Pearl Evelyn Moore, Banff, 1979
Catalogue Number:	104.20.0152 a-h

Images



This material is presented as originally created; it may contain outdated cultural descriptions and potentially offensive content. [Read more.](#)



Beverage Set

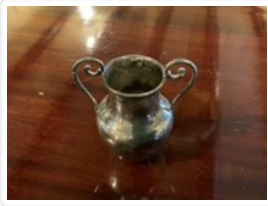
<https://archives.whyte.org/en/permalink/artifact104.20.0160%20a-h>

Title:	Beverage Set
Date:	1880 – 1925
Material:	glass
Dimensions:	12.5 cm
Description:	A set of eight very thin-walled crystal tumblers with flat bases and straight sides. Each glass is decorated with a band of thinly etched lines near the top.
Subject:	households
Credit:	Gift of Pearl Evelyn Moore, Banff, 1979
Catalogue Number:	104.20.0160 a-h

Images



This material is presented as originally created; it may contain outdated cultural descriptions and potentially offensive content. [Read more.](#)



Vase

<https://archives.whyte.org/en/permalink/artifact102.04.0053>

Title:	Vase
Date:	1880 – 1920
Material:	metal, silver
Dimensions:	6.5 x 5.0 x 6.7 cm
Description:	A small sterling silver vase with curved handles with repousse flowers on sides. The vase is hallmarked near the rim, is slightly tarnished and has many small dents.
Subject:	households decorative
Credit:	Gift of Pearl Evelyn Moore, Banff, 1979
Catalogue Number:	102.04.0053

Images



This material is presented as originally created; it may contain outdated cultural descriptions and potentially offensive content. [Read more.](#)



Vase

<https://archives.whyte.org/en/permalink/artifact102.04.0092>

Title:	Vase
Date:	1880 – 1920
Material:	ceramic; enamel
Dimensions:	17.0 x 7.2 x 11.6 cm
Description:	An ornate white china vase with a pinched base and neck and a flared rim. The two handles of the vase and body are decorated with raised flowers highlighted with gold-coloured enamel. The bottom of the vase is marked "199". The gold is worn off in several places, and there is a chip out of the front upper edge of the rim.
Subject:	households decorative
Credit:	Gift of Pearl Evelyn Moore, Banff, 1979
Catalogue Number:	102.04.0092

Images



This material is presented as originally created; it may contain outdated cultural descriptions and potentially offensive content. [Read more.](#)