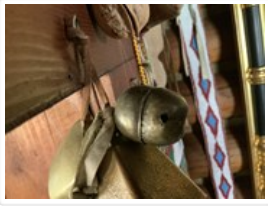


Research Collections

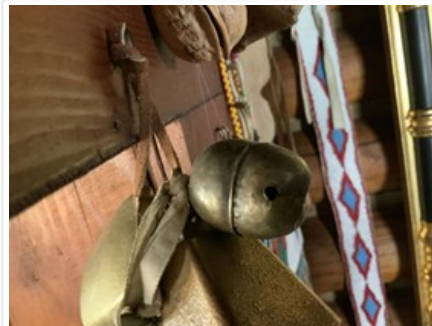


Cowbell Bell, Animal

<https://archives.whyte.org/en/permalink/artifact104.03.0001>

Title:	Cowbell Bell, Animal
Date:	1885 – 1910
Material:	metal, brass
Dimensions:	19.0 x 9.0 x 15.0 cm
Description:	A round brass bell made from a sheet of metal that has been bent and riveted into shape along the sides. The bell has a loop handle at the top.
Subject:	industry dairy farming
Credit:	Gift of Pearl Evelyn Moore, Banff, 1979
Catalogue Number:	104.03.0001

Images



This material is presented as originally created; it may contain outdated cultural descriptions and potentially offensive content. [Read more.](#)



Cowbell Bell, Animal

<https://archives.whyte.org/en/permalink/artifact104.03.0002>

Title:	Cowbell Bell, Animal
Date:	1885 – 1940
Material:	metal, brass
Dimensions:	6.0 x 3.7 x 4.9 cm
Description:	A brass bell that is cast in the shape of a truncated pyramid with a lug on top for hanging. There are bent metal eyes through the lug. The clapper is made of a single, heavy, piece of metal that hangs from a hook inside at the top.
Subject:	industry dairy farming
Credit:	Gift of Pearl Evelyn Moore, Banff, 1979
Catalogue Number:	104.03.0002

Images



This material is presented as originally created; it may contain outdated cultural descriptions and potentially offensive content. [Read more.](#)

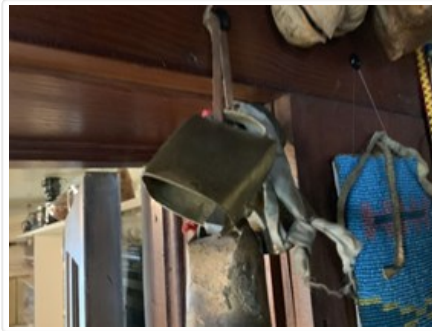


Cowbell Bell, Animal

<https://archives.whyte.org/en/permalink/artifact104.03.0003>

Title:	Cowbell Bell, Animal
Date:	1885 – 1940
Material:	metal, brass
Dimensions:	4.5 x 2.7 x 4.6 cm
Description:	A square, flattened, bell that is folded at the top. The bell is made from one sheet of metal folded into shape with a small loop handle at the top. The bell is riveted and braised on both sides. The bell's clapper is a single light piece of metal that hangs from a large loop inside at the top.
Subject:	industry dairy farming
Credit:	Gift of Pearl Evelyn Moore, Banff, 1979
Catalogue Number:	104.03.0003

Images



This material is presented as originally created; it may contain outdated cultural descriptions and potentially offensive content. [Read more.](#)



Cowbell Bell, Animal

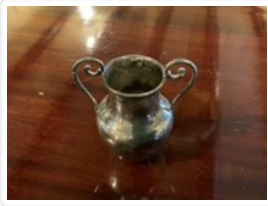
<https://archives.whyte.org/en/permalink/artifact104.03.0004>

Title:	Cowbell Bell, Animal
Date:	1885 – 1910
Material:	metal, brass
Dimensions:	8.0 x 3.5 x 4.0 cm
Description:	A long cylindrical brass bell made from a single sheet of metal that has been cut, folded and braised together at sides to form shape. There is a flat loop handle at the top of the bell. A rolled light metal clapper hangs from a hook inside the bell at the top.
Subject:	industry dairy farming Pearl Moore John Brewster
Credit:	Gift of Pearl Evelyn Moore, Banff, 1979
Catalogue Number:	104.03.0004

Images



This material is presented as originally created; it may contain outdated cultural descriptions and potentially offensive content. [Read more.](#)



Vase

<https://archives.whyte.org/en/permalink/artifact102.04.0053>

Title:	Vase
Date:	1880 – 1920
Material:	metal, silver
Dimensions:	6.5 x 5.0 x 6.7 cm
Description:	A small sterling silver vase with curved handles with repousse flowers on sides. The vase is hallmarked near the rim, is slightly tarnished and has many small dents.
Subject:	households decorative
Credit:	Gift of Pearl Evelyn Moore, Banff, 1979
Catalogue Number:	102.04.0053

Images



This material is presented as originally created; it may contain outdated cultural descriptions and potentially offensive content. [Read more.](#)



Vase

<https://archives.whyte.org/en/permalink/artifact102.04.0092>

Title:	Vase
Date:	1880 – 1920
Material:	ceramic; enamel
Dimensions:	17.0 x 7.2 x 11.6 cm
Description:	An ornate white china vase with a pinched base and neck and a flared rim. The two handles of the vase and body are decorated with raised flowers highlighted with gold-coloured enamel. The bottom of the vase is marked "199". The gold is worn off in several places, and there is a chip out of the front upper edge of the rim.
Subject:	households decorative
Credit:	Gift of Pearl Evelyn Moore, Banff, 1979
Catalogue Number:	102.04.0092

Images



This material is presented as originally created; it may contain outdated cultural descriptions and potentially offensive content. [Read more.](#)