



### Photographic Print

<https://archives.whyte.org/en/permalink/artifact105.02.0001>

Title:	Photographic Print
Date:	1880 – 1910
Material:	paper
Dimensions:	5.5 (image) x 7.5 (image) cm
Description:	A black and white oval shaped photograph of a man, in shirtsleeves, holding a baby [Edmee Moore] in the doorway of a log cabin.
Subject:	households family children photography
Credit:	Gift of Pearl Evelyn Moore, Banff, 1979
Catalogue Number:	105.02.0001

### Images



This material is presented as originally created; it may contain outdated cultural descriptions and potentially offensive content. [Read more.](#)



## Photographic Print

<https://archives.whyte.org/en/permalink/artifact105.02.0022>

Title:	Photographic Print
Date:	1880 – 1890
Material:	paper, mat board
Dimensions:	21.2 x 15.6 cm
Description:	A black and white studio photograph of John Brewster and a brother (George ?) sitting together in chairs with legs crossed. The photograph is framed with a wide grey mat and a dark ornate frame.
Subject:	photography families households John Brewster
Credit:	Gift of Pearl Evelyn Moore, Banff, 1979
Catalogue Number:	105.02.0022

## Images



This material is presented as originally created; it may contain outdated cultural descriptions and potentially offensive content. [Read more.](#)



## Photographic Print

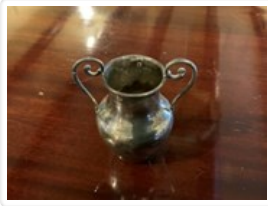
<https://archives.whyte.org/en/permalink/artifact105.02.0038>

Title:	Photographic Print
Date:	1885 – 1910
Material:	paper; wood; glass; metal
Dimensions:	14.5; 29.7 (frame) x 20.1; 33.0 (frame) cm
Description:	A black and white (sepia-toned?) photograph of a square white clapboard house with shutters, a picket fence and trees in front. The photograph has a wide white mat and a simple brown wooden frame with a notched inside border painted gold. The back of the photograph is marked "Brwon Family House, Framingham, Mass."
Subject:	households families Philip Moore Brown
Credit:	Gift of Pearl Evelyn Moore, Banff, 1979
Catalogue Number:	105.02.0038

## Images



This material is presented as originally created; it may contain outdated cultural descriptions and potentially offensive content. [Read more.](#)



## Vase

<https://archives.whyte.org/en/permalink/artifact102.04.0053>

Title:	Vase
Date:	1880 – 1920
Material:	metal, silver
Dimensions:	6.5 x 5.0 x 6.7 cm
Description:	A small sterling silver vase with curved handles with repousse flowers on sides. The vase is hallmarked near the rim, is slightly tarnished and has many small dents.
Subject:	households decorative
Credit:	Gift of Pearl Evelyn Moore, Banff, 1979
Catalogue Number:	102.04.0053

## Images



This material is presented as originally created; it may contain outdated cultural descriptions and potentially offensive content. [Read more.](#)



## Vase

<https://archives.whyte.org/en/permalink/artifact102.04.0092>

Title:	Vase
Date:	1880 – 1920
Material:	ceramic; enamel
Dimensions:	17.0 x 7.2 x 11.6 cm
Description:	An ornate white china vase with a pinched base and neck and a flared rim. The two handles of the vase and body are decorated with raised flowers highlighted with gold-coloured enamel. The bottom of the vase is marked "199". The gold is worn off in several places, and there is a chip out of the front upper edge of the rim.
Subject:	households decorative
Credit:	Gift of Pearl Evelyn Moore, Banff, 1979
Catalogue Number:	102.04.0092

## Images



This material is presented as originally created; it may contain outdated cultural descriptions and potentially offensive content. [Read more.](#)