



Purse

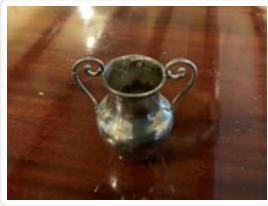
<https://archives.whyte.org/en/permalink/artifact103.08.0360>

Title:	Purse
Date:	1885 – 1925
Material:	fibre; glass; ivory
Dimensions:	22.2 x 5.4 x 21.8 cm
Description:	<p>A purse of blue grey silk with ivory battens at drawstring closure, and embroidered beaded figures of man and woman dancing. Purse is essentially a square with a panel along the sides and bottom for width, with a stiff panel inserted at the bottom between lining and purse. Top draws closed with a silver metallic cord through a short ivory batten on the front and back causing the bag to form two pleats on either side. Ends of cord have red and grey beaded loop tassels. Bag lined front, back and bottom with pink silk. Figures beaded on front of purse depict woman in yellow dress and man in green trousers and pink jacket holding top hat while they are dancing.</p>
Subject:	<p>households</p> <p>hobbies</p> <p>embroidery</p> <p>figure</p> <p>male</p> <p>female</p>
Credit:	Gift of Catharine Robb Whyte, O. C., Banff, 1979
Catalogue Number:	103.08.0360

Images



This material is presented as originally created; it may contain outdated cultural descriptions and potentially offensive content. [Read more.](#)



Vase

<https://archives.whyte.org/en/permalink/artifact102.04.0053>

Title:	Vase
Date:	1880 – 1920
Material:	metal, silver
Dimensions:	6.5 x 5.0 x 6.7 cm
Description:	A small sterling silver vase with curved handles with repousse flowers on sides. The vase is hallmarked near the rim, is slightly tarnished and has many small dents.
Subject:	households decorative
Credit:	Gift of Pearl Evelyn Moore, Banff, 1979
Catalogue Number:	102.04.0053

Images



This material is presented as originally created; it may contain outdated cultural descriptions and potentially offensive content. [Read more.](#)



Vase

<https://archives.whyte.org/en/permalink/artifact102.04.0092>

Title:	Vase
Date:	1880 – 1920
Material:	ceramic; enamel
Dimensions:	17.0 x 7.2 x 11.6 cm
Description:	An ornate white china vase with a pinched base and neck and a flared rim. The two handles of the vase and body are decorated with raised flowers highlighted with gold-coloured enamel. The bottom of the vase is marked "199". The gold is worn off in several places, and there is a chip out of the front upper edge of the rim.
Subject:	households decorative
Credit:	Gift of Pearl Evelyn Moore, Banff, 1979
Catalogue Number:	102.04.0092

Images



This material is presented as originally created; it may contain outdated cultural descriptions and potentially offensive content. [Read more.](#)