



Inuit Boy, Povungnituk

<https://archives.whyte.org/en/permalink/artifactwyc.01.215>

Artist:	Catharine Robb Whyte, O. C. (1906 – 1979, Canadian)
Title:	Inuit Boy, Povungnituk
Date:	1968
Medium:	oil on paper
Dimensions:	30.3 x 22.8 cm
Description:	A young boy stares into the eyes of the viewer. He has black hair, short with frayed ends and dark eyes. A blue scarf wrapped around his neck protects him from the cold. A big white parka lined around the edges with fur protects the upper part of his body.
Subject:	portrait, boy
Credit:	Gift of Catharine Robb Whyte, O. C., Banff, 1979
Catalogue Number:	WYC.01.215
Notes:	Artistry Revealed: Peter Whyte, Catharine Robb Whyte and Their Contemporaries; June 17, 2018 to October 21, 2018

Images



This material is presented as originally created; it may contain outdated cultural descriptions and potentially offensive content. [Read more.](#)



Povungnituk

<https://archives.whyte.org/en/permalink/artifactwyc.01.246>

Artist:	Catharine Robb Whyte, O. C. (1906 – 1979, Canadian)
Title:	Povungnituk
Date:	1968
Medium:	oil on canvas
Dimensions:	25.4 x 30.3 cm
Description:	<p>View of a coastal village. Similar to WyC.01.245. In the centre is a small light blue-green house, with a brick-red roof. A grey tent with touches of blue sits in front of the house. Three clotheslines, with wash coloured red, pale orange, pale ochre, and blue, hang about the house. In the lower left corner are two buildings with quick indications of two small figures between them. One of the figures is stooping over to pick something off the ground. Many other buildings are scattered over the rough ground of grass, exposed rock and dirt paths. In the far background in the upper left is a indication of pale blue-grey water. The sky is light grey.</p>
Subject:	<p>landscape</p> <p>rural</p> <p>architecture</p>
Credit:	Gift of Catharine Robb Whyte, O. C., Banff, 1979
Catalogue Number:	WyC.01.246
Notes:	Artistry Revealed: Peter Whyte, Catharine Robb Whyte and Their Contemporaries; June 17, 2018 to October 21, 2018

Images



This material is presented as originally created; it may contain outdated cultural descriptions and potentially offensive content. [Read more.](#)



Lukasie Angiyou, Povungnituk

<https://archives.whyte.org/en/permalink/artifactwyc.01.297>

Artist:	Catharine Robb Whyte, O. C. (1906 – 1979, Canadian)
Title:	Lukasie Angiyou, Povungnituk
Date:	1968
Medium:	oil on canvas
Dimensions:	35.5 x 28.0 cm
Description:	Facial portrait of a boy. The boy is smiling. His skin is coloured red-brown with tints of red blended in. The boy's features are defined with brown paint. The boy has a cap of blue-black hair. His shoulders are visible and he is wearing a blue shirt with a vest of light grey-tan. Touches of ochre blended into the vest help separate it from the background.
Subject:	portrait, male Indigenous
Credit:	Gift of Catharine Robb Whyte, O. C., Banff, 1979
Catalogue Number:	WyC.01.297
Notes:	Artistry Revealed: Peter Whyte, Catharine Robb Whyte and Their Contemporaries; June 17, 2018 to October 21, 2018

Images



This material is presented as originally created; it may contain outdated cultural descriptions and potentially offensive content. [Read more.](#)

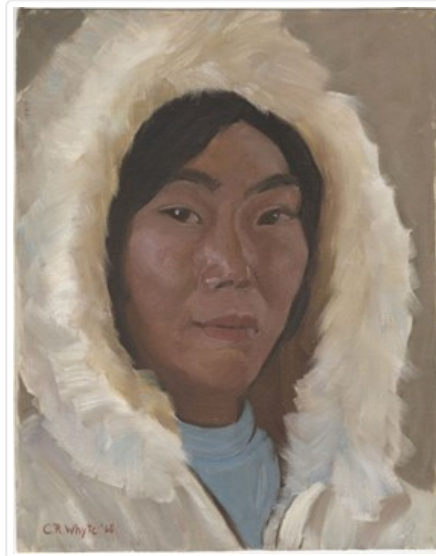


Lizzie Irquasiak, Samisa's Daughter

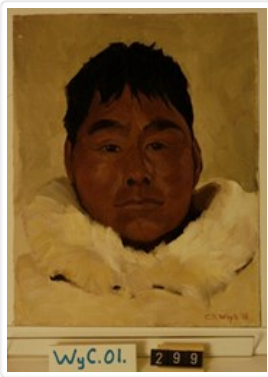
<https://archives.whyte.org/en/permalink/artifactwyc.01.298>

Artist:	Catharine Robb Whyte, O. C. (1906 – 1979, Canadian)
Title:	Lizzie Irquasiak, Samisa's Daughter
Date:	1968
Medium:	oil on canvas
Dimensions:	35.5 x 28.0 cm
Description:	Facial portrait of a young woman under the hood of her parka. The woman is gazing at the viewer surrounded by the fur trim of her jacket's hood. The woman's face is coloured red-brown with tints of brown and red blended in. She also has short black hair. The fur trim of her hood is coloured light tan with highlights of white, and shadows of ochre and brown, or blue. The woman is wearing a light blue shirt under her jacket.
Subject:	portrait, female Indigenous
Credit:	Gift of Catharine Robb Whyte, O. C., Banff, 1979
Catalogue Number:	WYC.01.298
Notes:	Artistry Revealed: Peter Whyte, Catharine Robb Whyte and Their Contemporaries; June 17, 2018 to October 21, 2018

Images



This material is presented as originally created; it may contain outdated cultural descriptions and potentially offensive content. [Read more.](#)

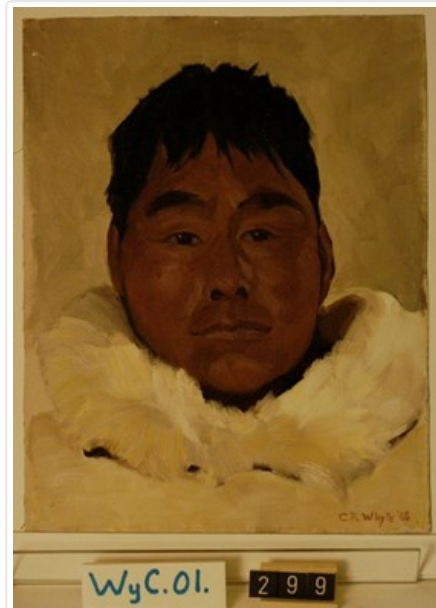


Joseph Amarualik

<https://archives.whyte.org/en/permalink/artifactwyc.01.299>

Artist:	Catharine Robb Whyte, O. C. (1906 – 1979, Canadian)
Title:	Joseph Amarualik
Date:	1968
Medium:	oil on canvas
Dimensions:	35.5 x 28.0 cm
Description:	Facial portrait of a man wearing a fur jacket. The man's face has close-set eyes and strong jaws. His solemn gaze does not seem to be directed at the viewer. His face is coloured red-brown with tints of red and violet-grey blended in. The figure's face is outlined in black and his short hair is black and brown. The man's fur collar is coloured light tan with touches of ochre. The collar has white and yellow highlights, and shadows of brown and grey-brown. The background is light grey-tan.
Subject:	portrait, male Indigenous
Credit:	Gift of Catharine Robb Whyte, O. C., Banff, 1979
Catalogue Number:	WyC.01.299
Notes:	Artistry Revealed: Peter Whyte, Catharine Robb Whyte and Their Contemporaries; June 17, 2018 to October 21, 2018

Images



This material is presented as originally created; it may contain outdated cultural descriptions and potentially offensive content. [Read more.](#)



Povungnituk

<https://archives.whyte.org/en/permalink/artifactwyc.01.255>

Artist:	Catharine Robb Whyte, O. C. (1906 – 1979, Canadian)
Title:	Povungnituk
Date:	1968
Medium:	oil on canvas
Dimensions:	25.4 x 30.3 cm
Description:	<p>View of a grey-brown church encompassed by houses. The church is located in the foreground to the right of centre. The only side of the church which is in full view has no windows or doors. The church's bell tower has an orange cross upon it. There is an indication of a dirt road leading up to the left side of the church. The houses about the church are coloured blue-green, blue, ochre or white, with details in brown or black. The sky fills three-quarters of the picture. It is a medium blue tone behind the homes, but there is a mass of grey cloud with light yellow highlights directly behind the church bell. The upper sky contains plumes of cloud divided by fairly distinct lines of blue sky (composed of loose brushstrokes placed side by side). The lines of blue sky seem to radiate outwards, like wheel spokes, from a point to the left of the picture's centre. Signed, in the lower right, Catherine R. Whyte '68.</p>
Subject:	landscape architecture rural
Credit:	Gift of Catharine Robb Whyte, O. C., Banff, 1979
Catalogue Number:	WYC.01.255
Notes:	Artistry Revealed: Peter Whyte, Catharine Robb Whyte and Their Contemporaries; June 17, 2018 to October 21, 2018

Images



This material is presented as originally created; it may contain outdated cultural descriptions and potentially offensive content. [Read more.](#)



Eskimo Children II, Resolute Bay, N.W.T.

<https://archives.whyte.org/en/permalink/artifactdak.02.01>

Artist:	Kathleen Frances Daly Pepper (1898 – 1994, Canadian)
Title:	Eskimo Children II, Resolute Bay, N.W.T.
Date:	1960
Medium:	oil on canvas
Dimensions:	75.0 x 62.3 cm
Description:	The faces of three children look out from parka hoods. Behind in the distance are mountains.
Subject:	portrait child group Inuit
Credit:	Purchased from Kathleen Frances Daly Pepper, 1969
Catalogue Number:	DaK.02.01
Notes:	Artistry Revealed: Peter Whyte, Catharine Robb Whyte and Their Contemporaries; June 17, 2018 to October 21, 2018

Images



This material is presented as originally created; it may contain outdated cultural descriptions and potentially offensive content. [Read more.](#)