



### Bomber Jacket

<https://archives.whyte.org/en/permalink/artifact103.05.0409>

Title:	Bomber Jacket
Date:	1973
Material:	polyester
Dimensions:	65.0 x 116.0 cm
Description:	<p>Navy blue bomber jacket size youth medium. Tag under collar has the name "Don Brewster" written on it with marker or pen and a team design on left chest with a hockey player holding a stick and aiming at a puck. Pins details- affixed to the Jacket. On the end of the right collar is a metal and enamel pin of a beaver playing with a hockey stick and some lettering that reads,"Banff Minor Hockey." On the right chest area is a white patch with red and blue details that include two crossed hockey sticks and words that read Taber Alberta Pee Wee 1974 28 Team. Four pins attached to the left side on the front of the jacket - Top to Bottom- white pin with black lettering and yellow and blue design that reads "1974 Winnipeg Centennial." - white pin with cartoon of snoopy the dog and words that read "I think my feet need sharpening." - White pin with red maple leaf and black words on top, "Have a good day." - white pin with blue wording "Annual Easter tourney Banff 75. Patch details on the back of Jacket- Black patch with yellow lettering "West Covina California and another patch that is maroon with yellow lettering "Pee-wee tourney Banff 1973.</p>
Subject:	<p>Hockey</p> <p>jacket</p> <p>team</p> <p>sport</p>
Credit:	Gift of Mary Brewster, Banff, 2023
Catalogue Number:	103.05.0409

### Images



This material is presented as originally created; it may contain outdated cultural descriptions and potentially offensive content. [Read more.](#)



## Fleece Vest

<https://archives.whyte.org/en/permalink/artifact103.05.0415>

Title:	Fleece Vest
Date:	1973
Material:	fabric; fleece;metal
Dimensions:	71.0 x 61.0 cm
Description:	A brown, thick, sherpa-style vest with four gold buttons that fasten with brown elastic loops. Buttons depict a crest with lions.
Subject:	mountaineering climbing outerwear
Credit:	Gift of Charles (Chic) Scott, Cochrane, 2023
Catalogue Number:	103.05.0415

## Images



This material is presented as originally created; it may contain outdated cultural descriptions and potentially offensive content. [Read more.](#)



## Tin Box

<https://archives.whyte.org/en/permalink/artifact110.01.0304>

Title:	Tin Box
Date:	1968
Material:	metal;
Dimensions:	2.0 x 5.5 x 8.0 cm
Description:	<p>A small blue tin with an intricately designed label printed onto the tin with lots of rust. The label reads "EDGEWORTH EXTRA HIGH GRADE PLUG SLICE SMOKING TOBACCO" and a scroll at the bottom that reads "LARUS &amp; BRO.CO. RICHMOND, VA.U.S.A." The tin lid hinges at the back of the tin, when opened there is text on the lid, some of the writing is blocked by rust but what can be deciphered reads "To the Consumers of High Grade Tobaccos..We desire to" "your special attention to EDGEWORTH TOBACCO" "the best combination that can be made only finest selection of leaf" "used. Every box of" "is" "not to burn the tongue and to give satisfaction." "We will cheerfully refund money to any dissatisfied purchaser." "LARUS &amp; BRO CO., Richmond". There is also text on the bottom of the tin but it is undecipherable due to rust.</p>
Subject:	<p>tobacco</p> <p>smoking</p> <p>tin</p>
Credit:	Gift of Harold McBride Mortimer, Banff, 1995
Catalogue Number:	110.01.0304

## Images



This material is presented as originally created; it may contain outdated cultural descriptions and potentially offensive content. [Read more.](#)



## Athletic Patch

<https://archives.whyte.org/en/permalink/artifact103.09.0173>

Title:	Athletic Patch
Date:	1963
Material:	fabric; fibre
Dimensions:	5.1 x 8.4 cm
Description:	"BANFF 1963 CANADIAN JUNIOR SKI CHAMPIONSHIPS"; Blue white and red embroidery on a white base. Mountains in background and a red flag with blue outline with "Banff" (in white) on it flapping in the wind, attached to a red ski pole. Along the bottom in all capitals reads "CANADIAN JUNIOR SKI CHAMPIONSHIPS" in black. A light blue outline along the entirety of the patch.
Subject:	Banff ski 1963 mountains patch embroidery ski championship
Credit:	Gift of Elmer Charlton, Banff, 2008
Catalogue Number:	103.09.0173

## Images



This material is presented as originally created; it may contain outdated cultural descriptions and potentially offensive content. [Read more.](#)



## Photographic Paper

<https://archives.whyte.org/en/permalink/artifact104.41.0224>

Title:	Photographic Paper
Date:	1922
Material:	cardboard; paper;
Dimensions:	9.2 x 18.7 x 15.5 cm
Description:	<p>A heavy beige box of photographic paper. The box is plain with little branding, one label on the top and a label along one side that connects to the bottom of the box. The label on the lid is black text in a square, it reads "OPEN ONLY IN PHOTOGRAPHIC DARK ROOM SENSITIZED PAPER", a black line, and "Manufactured by Canadian Kodak Co., Limited TORONTO, CANADA". The other label is coloured with a white background, blue banner, and green text which reads "GLOSSY DOUBLE WEIGHT 500 POST CARDS AZO F No. 4". In the blue banner with a black border in white text reads "No. 4 FOR EXTREMELY FLAT NEGATIVES". There is a stamped text that reads "EXPIRES JULY 1, 1922". The bottom part of the label that is on the bottom of the box reads "500 POST CARDS AZO F No. 4 GLOSSY DOUBLE WEIGHT". The bottom of the box features so handwriting and a stamped text that reads "5510 7034 46". Inside the box is lots of post card photographic paper, some is wrapped in black paper.</p>
Subject:	<p>film photography</p> <p>photographic paper</p> <p>Kodak</p> <p>photography accessories</p> <p>post cards</p> <p>photography</p>
Credit:	Gift of L. A. E Duncan, Calgary, 1980
Catalogue Number:	104.41.0224

## Images



This material is presented as originally created; it may contain outdated cultural descriptions and potentially offensive content. [Read more.](#)



## Tin Box

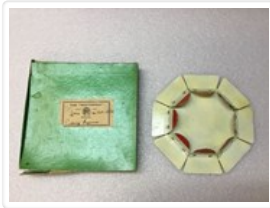
<https://archives.whyte.org/en/permalink/artifact110.01.0287>

Title:	Tin Box
Date:	1935 – 1940
Material:	metal; tin;
Dimensions:	3.6 x 10.2 x 13.6 cm
Description:	Eight-sided tin box predominantly dark blue with gold accents along edges and a black and white photo portrait of the British Royal Family on the lid. Manufacturer details printed on the back edge of the lid. The lid lifts completely off from the body - the box is empty. Back row, left to right: Queen Elizabeth the Queen Mother, King George VI. Front Row, left to right: Princess Margaret, Princess Elizabeth.
Subject:	Crosby family Abegweit Royal Family
Credit:	Gift of Robert Crosby Family, Banff, 1998
Catalogue Number:	110.01.0287

## Images



This material is presented as originally created; it may contain outdated cultural descriptions and potentially offensive content. [Read more.](#)



## Putting Improver

<https://archives.whyte.org/en/permalink/artifact108.04.0051>

Title:	Putting Improver
Date:	1940 – 1960
Material:	cardboard; metal;
Dimensions:	2.7 x 18.5 x 18.5 cm
Description:	Square green box with a hinged lid containing a white and red metal putting improver. On the lid of the box is a paper label with "THE 'NORTHWOOD'" printed along the top, and unidentified manufacturer's logo in the middle, "Red & White" written in black ink on the right-hand side, and "Putting Improver" written in black ink along the bottom. The tool itself consists of an eight-sided plate with hinged attachments on each side that fold towards the center when pushed over.
Subject:	Crosby family Abegweit golf golf equipment;
Credit:	Gift of Robert Crosby Family, Banff, 1998
Catalogue Number:	108.04.0051

## Images



This material is presented as originally created; it may contain outdated cultural descriptions and potentially offensive content. [Read more.](#)



## Chamber Pot

<https://archives.whyte.org/en/permalink/artifact103.02.0337>

Title:	Chamber Pot
Date:	1890 – 1950
Material:	metal; enamel;
Dimensions:	11.8 x 27.4 x 23.9 cm
Description:	Round white enamel chamber pot with a dark blue handle and blue stripe around the lip.
Subject:	Crosby family Abegweit household items toiletries bathroom accessories;
Credit:	Gift of Robert Crosby Family, Banff, 1998
Catalogue Number:	103.02.0337

## Images



This material is presented as originally created; it may contain outdated cultural descriptions and potentially offensive content. [Read more.](#)





## Meat Pudding

<https://archives.whyte.org/en/permalink/artifact104.19.0267>

Title: Meat Pudding

Date: 1910 – 1930

Material: ceramic;

Dimensions: 13.5 cm

Description: Beige ceramic pudding "Quick-Cooker." Consists of a narrow, deep bowl with a hollow central funnel and a lid with a central hole. Both the bowl and the lid have instructions and advertisements [for other Grimwades products] throughout the insides and outsides. The bowl has four notches on the bottom and the lid has four corresponding notches in the rim where two loops of string fit to hold the lid in place while cooking. According to the instructions throughout, these bowls were used predominantly for "meat puddings" - the central funnel serves like a bundt pan in order to evenly cook the pudding.

Subject: Crosby family

Abegweit

kitchen utensils

cooking tools

Credit: Gift of Robert Crosby Family, Banff, 1998

Catalogue Number: 104.19.0267

## Images



This material is presented as originally created; it may contain outdated cultural descriptions and potentially offensive content. [Read more.](#)



## Camera

<https://archives.whyte.org/en/permalink/artifact104.41.0181>

Title:	Camera
Date:	1889 – 1945
Material:	metal; glass; leather;
Dimensions:	19.7 x 20.0 x 14.4 cm
Description:	Black leather and silver metal 4x6 Curt Bentzin Görlitz camera with a fold-down front panel that exposes the lens and bellows, a leather handle and two adjustment knobs on one side, a pop-up view finder on top, and fold-out leather flaps that access the exposure plate. Small metal levers throughout allow different panels in the camera to open - three holes along the bottom [one on the body of the camera and two on the fold-down lens plate] allow the camera to be mounted on a tripod.
Subject:	Crosby family Abegweit cameras photography;
Credit:	Gift of Robert Crosby Family, Banff, 1998
Catalogue Number:	104.41.0181

## Images



This material is presented as originally created; it may contain outdated cultural descriptions and potentially offensive content. [Read more.](#)



## Movie Camera

<https://archives.whyte.org/en/permalink/artifact104.41.0182%20a%2cb>

Title:	Movie Camera
Date:	1927 – 1946
Material:	metal; glass; leather; paper;
Dimensions:	12.7 x 6.2 x 23.6 cm
Description:	Black leather and silver metal hand-held Ciné-Kodak Model K 16mm film camera with a leather handle and two view finders on top, hand crank and trigger on the right hand side, lens and instruction plate on the front, and a metal switch on the left-hand side that allows the panel to come off in order to access the film reels. Also comes with an instruction manual for "Making the Most" of the camera with more Ciné-Kodak leaflets tucked into the back cover.
Subject:	Crosby family Abegweit movie camera motion pictures
Credit:	Gift of Robert Crosby Family, Banff, 1998
Catalogue Number:	104.41.0182 a,b

## Images



This material is presented as originally created; it may contain outdated cultural descriptions and potentially offensive content. [Read more.](#)



## Lens Case

<https://archives.whyte.org/en/permalink/artifact104.41.0183>

Title:	Lens Case
Date:	1896 – 1940
Material:	leather; fabric; velvet; glass;
Dimensions:	9.0 x 13.9 x 20.2 cm
Description:	Black hard-sided leather box with a hinged lid held closed with a small silver clasp. The inside of the lid is lined with purple satin and has the manufacturer's details printed in gold. The interior of the main body is lined with purple velvet and divided into three compartments that house three lenses and an extra lens hood - all for Meyer Optik Görlitz cameras.
Subject:	Crosby family Abegweit camera equipment camera accessories photography;
Credit:	Gift of Robert Crosby Family, Banff, 1998
Catalogue Number:	104.41.0183

## Images



This material is presented as originally created; it may contain outdated cultural descriptions and potentially offensive content. [Read more.](#)



## Thread Holder

<https://archives.whyte.org/en/permalink/artifact104.45.0065>

Title:	Thread Holder
Date:	1950 – 1970
Material:	plastic; metal; thread;
Dimensions:	6.9 cm
Description:	<p>Cream and red cylindrical thread holder with a small head with a black painted face and red hat on top. Inside the main body is a cream-coloured insert with three different coloured threads wrapped around it, separated by disks - the insert has a hollow opening at the top where three sewing needles [one of which has a short length of black thread in it] are housed. "FRENCH IVORY" is stamped on the bottom.</p>
Subject:	<p>Crosby family</p> <p>Abegweit</p> <p>sewing</p> <p>sewing equipment</p> <p>houseware</p>
Credit:	Gift of Robert Crosby Family, Banff, 1998
Catalogue Number:	104.45.0065

## Images



This material is presented as originally created; it may contain outdated cultural descriptions and potentially offensive content. [Read more.](#)



## Pin Holder

<https://archives.whyte.org/en/permalink/artifact104.45.0066>

Title:	Pin Holder
Date:	1940 – 1970
Material:	cardboard; plastic; metal;
Dimensions:	6.5 x 6.8 x 9.3 cm
Description:	<p>Black plastic “OAKVILLE PIN HOLDER” in its original yellow cardboard box. The pin holder consists of a two-tiered body on a wider sloped base - the lower compartment contains the pins and the upper piece is pressed down on a spring, which funnels a pin through a hole on the top, allowing it to be pulled out. The top consists of a cap that can be snapped off by pressing a small metal lever in order to access the pin compartment. The yellow cardboard box contains manufacturer information and instructions throughout the outside.</p>
Subject:	<p>Crosby family</p> <p>Abegweit</p> <p>sewing equipment</p> <p>homewares</p> <p>household items</p>
Credit:	Gift of Robert Crosby Family, Banff, 1998
Catalogue Number:	104.45.0066

## Images



This material is presented as originally created; it may contain outdated cultural descriptions and potentially offensive content. [Read more.](#)



## Matchbox Holder

<https://archives.whyte.org/en/permalink/artifact102.04.0596>

Title:	Matchbox Holder
Date:	1940 – 1960
Material:	metal; tin;
Dimensions:	14.5 x 7.0 x 7.1 cm
Description:	Metal wall-mounted matchbox holder with an opening at the top and another that curves up from the bottom so that boxes can be filled from the top and funnel through to the lower opening. Printed on the front in blue inside a zig-zag border is "CASH OR CREDIT AT MURDOCH'S Staple and Fancy GROCERIES and PRODUCE Telephone 129 BANFF, ALBERTA."
Subject:	Crosby family Abegweit household accessories Murdoch's Grocery
Credit:	Gift of Robert Crosby Family, Banff, 1998
Catalogue Number:	102.04.0596

## Images



This material is presented as originally created; it may contain outdated cultural descriptions and potentially offensive content. [Read more.](#)





## Glass Bottles

<https://archives.whyte.org/en/permalink/artifact110.01.0288%20a%2cb>

Title:	Glass Bottles
Date:	1920 – 1940
Material:	glass; plastic; paper;
Dimensions:	12.1 x 2.6 x 4.1 cm
Description:	Two glass drug store bottles with black plastic caps and paper adhesive labels on the front: a - tall and narrow clear glass bottle with a "KING EDWARD DRUG STORE" paper adhesive label on the front - "Acetone" is typed along the top of the label. Molded onto the back of the bottle are measurement markers. b - short and narrow brown glass bottle with a "Banff Pharmacy" paper adhesive label on the front - the label has typed instructions for taking tablet medication.
Subject:	Crosby family Abegweit medicine drug store pharmacy
Credit:	Gift of Robert Crosby Family, Banff, 1998
Catalogue Number:	110.01.0288 a,b

## Images



This material is presented as originally created; it may contain outdated cultural descriptions and potentially offensive content. [Read more.](#)





## Padlock

<https://archives.whyte.org/en/permalink/artifact102.04.0599%20a-e>

Title:	Padlock
Date:	1907 – 1920
Material:	metal;
Dimensions:	1.1 x 6.2 x 9.4 cm
Description:	Two metal Miller Lock Co. padlocks, one larger than the other, and three pieces of metal that serve an unknown purpose. The larger lock has the manufacturer details engraved along the curved arm, "MILLER" engraved in a decorative scroll on the body above the key hole, and "EIGHT LEVER" engraved below the key hole. The smaller lock has "MILLER" in a decorative scroll and "3-LEVER" engraved above the key hole. Both locks have several brass studs throughout the fronts and backs. The three extra metal pieces all have small holes drilled in them, two are longer and tapered at one end and curve in a semi-circle, the third is mostly flat with the two long sides folded up and towards the center and has a small hook at one short end.
Subject:	locks protection devices
Credit:	Gift of Bill Mather, Edmonton, 1991
Catalogue Number:	102.04.0599 a-e

## Images



This material is presented as originally created; it may contain outdated cultural descriptions and potentially offensive content. [Read more.](#)



## Pepper Shaker

<https://archives.whyte.org/en/permalink/artifact104.20.1293>

Title:	Pepper Shaker
Date:	1920 – 1930
Material:	metal; aluminum;
Dimensions:	6.6 cm
Description:	Small aluminum pepper shaker with a narrow weighted base, wide central body, and tapered top with a screw-cap covered in holes throughout. The top of the cap and the interior stained pale brown. Shaker is empty.
Subject:	kitchen utensils seasonings house ware
Credit:	Gift of Bill Mather, Edmonton, 1991
Catalogue Number:	104.20.1293

## Images



This material is presented as originally created; it may contain outdated cultural descriptions and potentially offensive content. [Read more.](#)



## Salt Shaker

<https://archives.whyte.org/en/permalink/artifact104.20.1294>

Title:	Salt Shaker
Date:	1920 – 1930
Material:	glass; metal; aluminum;
Dimensions:	6.5 cm
Description:	Glass and aluminum salt shaker with a weighted glass bottom, wide central body, and tapered top with a screw-cap covered in holes. Shaker is empty.
Subject:	kitchen utensils home wares food preparation;
Credit:	Gift of Bill Mather, Edmonton, 1991
Catalogue Number:	104.20.1294

## Images



This material is presented as originally created; it may contain outdated cultural descriptions and potentially offensive content. [Read more.](#)



## Eggcup

<https://archives.whyte.org/en/permalink/artifact104.20.1295>

Title:	Eggcup
Date:	1920 – 1930
Material:	metal;
Dimensions:	5.9 cm
Description:	Metal eggcup with a hollow base and fluted stand below the cup, which has a slightly curved-out lip.
Subject:	kitchen utensils
Credit:	Gift of Bill Mather, Edmonton, 1991
Catalogue Number:	104.20.1295

## Images



This material is presented as originally created; it may contain outdated cultural descriptions and potentially offensive content. [Read more.](#)