

Research Collections



Three Dancing Ladies

<https://archives.whyte.org/en/permalink/artifactcef.02.01>

Artist:	Frederick Sproston Challener (1869 – 1959)
Title:	Three Dancing Ladies
Date:	n.d.
Medium:	oil on panel
Dimensions:	2.5 x 7.5 cm
Description:	A very small oil painting showing three women in long dresses holding hands and appearing to dance. The womens dresses are yellow, orange, and yellow, The background behind them is green and appears to be a forest.
Credit:	Gift of John Rivette, Seymour Arm, 1981
Catalogue Number:	CeF.02.01

Images



This material is presented as originally created; it may contain outdated cultural descriptions and potentially offensive content. [Read more.](#)

Image
not
available

[Hunter and Dogs]

<https://archives.whyte.org/en/permalink/artifactcef.05.01>

Artist:	Frederick Sproston Challener (1869 – 1959)
Title:	[Hunter and Dogs]
Date:	n.d.
Medium:	watercolour on paper
Dimensions:	10.8 x 8.5 cm
Description:	A small watercolour painting of a forest with autumnal colours on the ground and in the tall trees. At the bottom right is a small hunter with two small dogs.
Subject:	dogs hunting
Credit:	Gift of John Rivette, Seymour Arm, 1981
Catalogue Number:	CeF.05.01

Images

Image
not
available

This material is presented as originally created; it may contain outdated cultural descriptions and potentially offensive content. [Read more.](#)



The Grand Foyer of the Savoy Hotel London

<https://archives.whyte.org/en/permalink/artifactcoj.04.01>

Artist:	Charles John Collings (1848 – 1931, British)
Title:	The Grand Foyer of the Savoy Hotel London
Date:	n.d.
Medium:	ink on paper
Dimensions:	24.0 x 34.0 cm
Description:	A reproduction of a watercolour painting showing an ornate and colourful lobby filled with palm trees and furniture.
Subject:	Savoy Hotel
Credit:	Gift of John Rivette, Seymour Arm, 1982
Catalogue Number:	CoJ.04.01

Images



This material is presented as originally created; it may contain outdated cultural descriptions and potentially offensive content. [Read more.](#)



[Untitled]

<https://archives.whyte.org/en/permalink/artifactcoj.04.02>

Artist:	Charles John Collings (1848 – 1931, British)
Title:	[Untitled]
Date:	n.d.
Medium:	ink on paper
Dimensions:	22.5 x 15.5 cm
Description:	a reproduction watercolour showing the exterior of a grand hotel. A sign with “Savoy Hotel” can be seen on the upper floors. Large trees surround the hotel.
Credit:	Gift of John Rivette, Seymour Arm, 1982
Catalogue Number:	CoJ.04.02

Images



This material is presented as originally created; it may contain outdated cultural descriptions and potentially offensive content. [Read more.](#)



The Diva Takes a Bow

<https://archives.whyte.org/en/permalink/artifactenm.03.02>

Artist:	Maureen Enns (1949 – , Canadian)
Title:	The Diva Takes a Bow
Date:	2009
Medium:	charcoal on primed paper
Dimensions:	101.6 x 76.2 cm
Description:	A charcoal drawing of a black horse with head down is drawn in 3/4 view emerging from the left side of the paper. It's hooves are left unfinished and dissolve into loose wisps. It's mane is loose and flowing.
Subject:	horse
Credit:	Purchased from Maureen Enns, Cochrane, 2022
Catalogue Number:	EnM.03.02

Images



This material is presented as originally created; it may contain outdated cultural descriptions and potentially offensive content. [Read more.](#)



Foal

<https://archives.whyte.org/en/permalink/artifactfao.06.01>

Artist:	Joseph Fafard (1942 – 2019, Canadian)
Title:	Foal
Date:	2003
Medium:	bronze; paint
Dimensions:	132.0 x 49.0 x 135.0 cm
Description:	A cast bronze sculpture of a foal. The foal is painted medium-to light brown with a light face. He stands with his front legs wider than his hind legs and looks slightly to the side. Back right hoof is signed "FAFARD 2003 2/7"
Subject:	foal animals
Credit:	Gift of Neil and Edith MacGillivray, Canmore, 2023
Catalogue Number:	FaO.06.01

Images



This material is presented as originally created; it may contain outdated cultural descriptions and potentially offensive content. [Read more.](#)



Calf

<https://archives.whyte.org/en/permalink/artifactfao.06.02>

Artist: Joseph Fafard (1942 – 2019, Canadian)

Title: Calf

Date: 2009

Medium: bronze; paint

Dimensions: 105.0 x 37.0 x 121.0 cm

Description: A cast bronze sculpture of a calf. The calf is painted black with a white tip on its tail. Both ears have a bolt through them. The left ear has a tag that reads "FAFARD 2009"

Subject: calf
animal

Credit: Gift of Neil and Edith MacGillivray, Canmore, 2023

Catalogue Number: FaO.06.02

Images



This material is presented as originally created; it may contain outdated cultural descriptions and potentially offensive content. [Read more.](#)



Athabasca Glacier Station 2

<https://archives.whyte.org/en/permalink/artifactivg.03.01>

Artist: Gennadiy Ivanov

Title: Athabasca Glacier Station 2

Date: ca. 2019 – 2019

Medium: pastel on paper

Dimensions: 50.0 x 65.0 x 50.0 cm

Description: Landscape pastel drawing with a colour palette made up of purples, blues, and soft peach. in the background there are glaciers or mountains. In the middle ground, just slightly off to the right, there is a weather station composed of black and blue pastel. in the foreground are vertical lines of purple, white, and blue, that represent patterns of the glaciers.

Subject: Glaciers
weather stations
climate change
pastel
mountains
Athabasca.

Credit: Gift of Gennadiy Ivanov, Norwich, Norfolk , UK, 2023

Catalogue Number: IvG.03.01

Images



This material is presented as originally created; it may contain outdated cultural descriptions and potentially offensive content. [Read more.](#)



Athabasca Glacier Station 1

<https://archives.whyte.org/en/permalink/artifactivg.03.02>

Artist:	Gennadiy Ivanov
Title:	Athabasca Glacier Station 1
Date:	ca. 2019 – 2019
Medium:	pastel on paper
Dimensions:	49.0 x 69.0 x 49.0 cm
Description:	Landscape pastel drawing of a glacier area, colour palette made up of purple, orange, yellows, blues and black. In the background there are glaciers, hills, or mountains. Middle ground is filled with vertical and horizontal lines that represent the pattern of glaciers. In the foreground, off to the left hand side is a weather station made up of black and blue.
Subject:	Glaciers weather station climate change University of Saskatchewan
Credit:	Gift of Gennadiy Ivanov, Norwich, Norfolk , UK, 2023
Catalogue Number:	lvG.03.02

Images



This material is presented as originally created; it may contain outdated cultural descriptions and potentially offensive content. [Read more.](#)



Athabasca

<https://archives.whyte.org/en/permalink/artifactivg.03.03>

Artist: Gennadiy Ivanov

Title: Athabasca

Date: ca. 2022 – 2022

Medium: pastel on paper

Dimensions: 34.0 x 50.0 cm

Description: Landscape painting of glacial area. Background has a blue sky that is filled with tall glacial formations. Right at the centre of the middle ground are silhouettes of two people rendered in black. Off to the the right side of the foreground is a weather station. The colour palette is made up of blue, purples, orange, black, brown, green, and white.

Subject: Glaciers

weather station

climate change

University of Saskatchewan.

Credit: Gift of Gennadiy Ivanov, Norwich, Norfolk , UK, 2023

Catalogue Number: IvG.03.03

Images



This material is presented as originally created; it may contain outdated cultural descriptions and potentially offensive content. [Read more.](#)



Untitled Oil Sketch

<https://archives.whyte.org/en/permalink/artifactmoe.01.33>

Artist: Edmee Moore (1908 – 1971, Canadian)

Title: Untitled Oil Sketch

Date: n.d.

Medium: oil on board;

Dimensions: 60.5 x 44.9 cm

Description: Oil sketch of a portrait of a man of Asian descent, dressed in a black vest with blue shirt underneath, fan in hand, and a green-biege hat. Man is looking towards the left and appears to be seated against a green and black backdrop.

Subject: oil sketch
male portrait
portrait
fan

Credit: Gift of Pearl Evelyn Moore, Banff, 1979

Catalogue Number: MoE.01.33

Images



This material is presented as originally created; it may contain outdated cultural descriptions and potentially offensive content. [Read more.](#)



Untitled Oil Sketch

<https://archives.whyte.org/en/permalink/artifactmoe.01.34>

Artist:	Edmee Moore (1908 – 1971, Canadian)
Title:	Untitled Oil Sketch
Date:	n.d.
Medium:	oil on canvas; board
Dimensions:	50.5 x 40.0 cm
Description:	Unfinished oil sketch of a portrait of a woman(?). Sketched outlines of the details of the face, eyes, nose, mouth and side of face. Subject is facing towards the left.
Subject:	oil sketch unfinished incomplete work in progress portrait
Credit:	Gift of Pearl Evelyn Moore, Banff, 1979
Catalogue Number:	MoE.01.34

Images



This material is presented as originally created; it may contain outdated cultural descriptions and potentially offensive content. [Read more.](#)



Andromeda

<https://archives.whyte.org/en/permalink/artifactmoi.02.01>

Artist:	David More (1947 – , Canadian)
Title:	Andromeda
Date:	1993
Medium:	oil on board
Dimensions:	30.5 x 40.5 cm
Description:	A large mountain rises up at left, a glacier spills down its face into the centre of the painting. Thin conifer trees are in the foreground. The sky is dark blue.
Subject:	mountains glaciers Mount Andromeda, Banff
Credit:	Gift of David More, Benalto, 2021
Catalogue Number:	Mol.02.01

Images



This material is presented as originally created; it may contain outdated cultural descriptions and potentially offensive content. [Read more.](#)



Glacier Majesty (diptych)

<https://archives.whyte.org/en/permalink/artifactmoi.02.02>

Artist:	David More (1947 – , Canadian)
Title:	Glacier Majesty (diptych)
Date:	1993
Medium:	oil on board
Dimensions:	40.5 x 81.0 cm
Description:	A mountain scene showing large mountains separated by two large glaciers that reach into the foreground. Colours are browns and purples for the mountains and white, blue, and grey for the glaciers.
Subject:	mountains glaciers Columbia Icefields
Credit:	Gift of David More, Benalto, 2021
Catalogue Number:	Mol.02.02

Images



This material is presented as originally created; it may contain outdated cultural descriptions and potentially offensive content. [Read more.](#)



Evening Forms - Slopes and Mt. Athabasca

<https://archives.whyte.org/en/permalink/artifactmoi.02.03>

Artist:	David More (1947 – , Canadian)
Title:	Evening Forms - Slopes and Mt. Athabasca
Date:	1993
Medium:	oil on board
Dimensions:	40.5 x 40.5 cm
Description:	A mountain scene in which a grassy, lightly forested slope leads to a green and brown slope. In the background is a large, snow covered mountain. The sky is visible at top left and is mainly blue with streaks of pink.
Subject:	mountains Mt. Athabasca
Credit:	Gift of David More, Benalto, 2021
Catalogue Number:	Mol.02.03

Images



This material is presented as originally created; it may contain outdated cultural descriptions and potentially offensive content. [Read more.](#)



Rain Shrouds the Nigels

<https://archives.whyte.org/en/permalink/artifactmoi.02.04>

Artist:	David More (1947 – , Canadian)
Title:	Rain Shrouds the Nigels
Date:	1993
Medium:	Oil on board
Dimensions:	28.0 x 35.0 cm
Description:	A rainbow stretches from the centre of the painting to the upper right corner. Below the rainbow is a grassy slope with red and purple accents. a rocky outcrop emerges from a cloud at left. the sky is swirls of purple.
Subject:	rainbow mountains
Credit:	Gift of David More, Benalto, 2021
Catalogue Number:	Mol.02.04

Images



This material is presented as originally created; it may contain outdated cultural descriptions and potentially offensive content. [Read more.](#)



Top of Panther Falls

<https://archives.whyte.org/en/permalink/artifactmoi.03.02>

Artist: David More (1947 – , Canadian)

Title: Top of Panther Falls

Date: 1993

Medium: black conte' and watercolour on paper

Dimensions: 50.5 x 50.5 cm

Description: A loose black and white sketch showing a pool surrounded by rocks and emerging in a waterfall in the foreground. The pool has been painted with light blue watercolour. There is a pile of dead logs at the edge of the pool where it begins to become a waterfall.

Subject: waterfall

Credit: Gift of David More, Benalto, 2021

Catalogue Number: Mol.03.02

Images



This material is presented as originally created; it may contain outdated cultural descriptions and potentially offensive content. [Read more.](#)



Deer Lodge

<https://archives.whyte.org/en/permalink/artifactrta.02.03>

Artist:	Andreas Roth
Title:	Deer Lodge
Date:	1942
Medium:	oil on canvas
Dimensions:	66.0 x 80.0 cm
Description:	Oil painting showing a red brick building (Deer Lodge) surrounded by trees. Lake Louise, the Victoria Glacier, and Mounts Lefroy and Victoria can be seen in the background.
Subject:	Deer Lodge Lake Louise
Credit:	Gift of Robert Crosby Family, Banff, 1998
Catalogue Number:	RtA.02.03

Images



This material is presented as originally created; it may contain outdated cultural descriptions and potentially offensive content. [Read more.](#)



Mountain Man

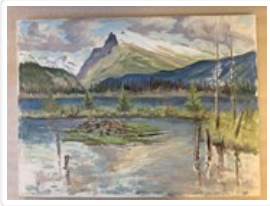
<https://archives.whyte.org/en/permalink/artifacttic.02.21>

Artist:	Clarence Ingwall Tillenius (1913 – 2012, Canadian)
Title:	Mountain Man
Date:	n.d.
Medium:	oil on canvas
Dimensions:	73.6 x 58.4 cm
Description:	A man in cowboy clothing stands on a rocky surface with a black horse directly behind him. Behind the horse is a pack train of ~10 horses, all loaded down with cloth-covered packs. The pack train winds it's way across a rocky slope. Mountains in background.
Subject:	horses pack train mountain
Credit:	Gift of Clarence Ingwall Tillenius, Winnipeg, 1996
Catalogue Number:	TiC.02.21

Images



This material is presented as originally created; it may contain outdated cultural descriptions and potentially offensive content. [Read more.](#)



[Rundle and Vermilion Lakes]

<https://archives.whyte.org/en/permalink/artifactuj.02.03>

Artist:	John Davenall Turner (1900 – 1980, Canadian)
Title:	[Rundle and Vermilion Lakes]
Date:	1980
Medium:	oil on canvas
Dimensions:	60.5 x 81.5 cm
Description:	Unfinished painting with Mount Rundle and the Fairholme Range in the background, both snow-capped. Lower slopes of Rundle are green. Foreground: blue lakes broken up by large strip of trees in middle of painting and pile of logs in front. Corners are unfinished.
Subject:	mountains lakes Banff Rundle Vermilion nature landscape
Credit:	Gift of John Davenall Turner (Estate), 2020
Catalogue Number:	TuJ.02.03

Images



This material is presented as originally created; it may contain outdated cultural descriptions and potentially offensive content. [Read more.](#)