



Mountain Goats, Lake McArthur, Alberta

<https://archives.whyte.org/en/permalink/artifacthad.02.01>

Artist:	Dwayne Harty
Title:	Mountain Goats, Lake McArthur, Alberta
Date:	2012
Medium:	oil on canvas
Dimensions:	77.0 x 110.0 cm
Description:	An oil painting depicting three adult female mountain goats and three kids near a rocky crag in front of a mountain lake. Blue cloudy sky above mountain with glacier.
Subject:	landscape mountains lake animals, mountain goats Lake McArthur Dwayne Harty
Credit:	Gift of Dwayne Harty, Moose, USA, 2012
Catalogue Number:	HaD.02.01

Images



This material is presented as originally created; it may contain outdated cultural descriptions and potentially offensive content. [Read more.](#)



Lake O'Hara

<https://archives.whyte.org/en/permalink/artifactgik.01.01>

Artist:	Kenneth Gillespie (1948 – , Canadian)
Title:	Lake O'Hara
Date:	2000
Medium:	oil on canvas
Dimensions:	76.5 x 101.5 cm
Description:	<p>The scene is dominated by the rock faces, and mountains, notably the Yukness Ledges. Very little sky is visible, mostly white and blue clouds. Mauve, pink and brown mountains with a few vestiges of snow; pink and brown rock faces with dark and light green trees leading down to the shore. Seven Sisters Falls is visible mid-to viewer's right. The bottom portion is turquoise blue water bisected by a line of brown/orange/pink rocks with seven shadowy trees and tree trunks, viewer's right. Au verso printed in black marker, viewer's left, Lake O'Hara 30x40; viewer's right Lake O'Hara</p>
Subject:	landscape mountains water, Lake O'Hara
Credit:	Gift of Barbara and Andrew Hyslop Zinter, 2012
Catalogue Number:	GiK.01.01

Images



This material is presented as originally created; it may contain outdated cultural descriptions and potentially offensive content. [Read more.](#)



Answering The Challenge

<https://archives.whyte.org/en/permalink/artifacttic.02.07>

Artist:	Clarence Ingwall Tillenius (1913 – 2012, Canadian)
Title:	Answering The Challenge
Date:	1996
Medium:	oil on canvas
Dimensions:	122.0 x 182.8 cm
Description:	<p>At the bottom a male elk is challenging another male elk. The second elk is higher up on the side of a mountain in a grassy area. Further off in the distance six female elk watch. The grass that the elk are standing on is a yellow green color and the rock in the background behind the elk is a red brown hue. The two male elk are facing each other and both have a full set of horns. The mountains in the far distance are a grey blue color.</p>
Subject:	landscape Canadian Rockies animal elk
Credit:	Gift of Clarence Ingwall Tillenius, Winnipeg, 1996
Catalogue Number:	TiC.02.07

Images



This material is presented as originally created; it may contain outdated cultural descriptions and potentially offensive content. [Read more.](#)



Tom Wilson's Cabin - Kootenay Plains

<https://archives.whyte.org/en/permalink/artifactema.05.01>

Artist:	Alex Emond (1950 – , Canadian)
Title:	Tom Wilson's Cabin - Kootenay Plains
Date:	1996
Medium:	watercolour on paper
Dimensions:	25.9 x 35.0 cm
Description:	A medium size log cabin is surrounded by green grass and trees. The roof of the cabin has grass growing on it and the sky above is gray with many clouds. Most of the trees around this cabin are located at the back and the green grass is in the foreground.
Subject:	landscape Canadian Rockies architecture log cabin
Credit:	Gift of Alex Emond, Banff, 1997
Catalogue Number:	EmA.05.01

Images



This material is presented as originally created; it may contain outdated cultural descriptions and potentially offensive content. [Read more.](#)



Ship

<https://archives.whyte.org/en/permalink/artifactvtp.02.02>

Artist:	Peter von Tiesenhausen (1959 – , Canadian)
Title:	Ship
Date:	1995
Medium:	gesso on wood
Dimensions:	23.0 x 99.0 cm
Description:	<p>A lozenge shaped piece of burnt wood, uneven surface, painted white. The white colour is irregular. Centered is a drawing of a ship. The ship is not typical. Black lines indicate only the skeletal shape, looking more like an unfinished woven basket with the ribs long and pointing out and up.</p>
Subject:	<p>landscape</p> <p>mythological</p> <p>boat</p>
Credit:	Gift of Peter von Tiesenhausen, Demmitt, 1995
Catalogue Number:	VtP.02.02

This material is presented as originally created; it may contain outdated cultural descriptions and potentially offensive content. [Read more.](#)

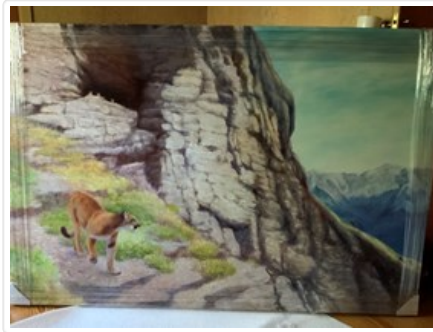


Leaving for the Hunt

<https://archives.whyte.org/en/permalink/artifactic.02.17>

Artist:	Clarence Ingwall Tillenius (1913 – 2012, Canadian)
Title:	Leaving for the Hunt
Date:	1995
Medium:	oil on canvas
Dimensions:	122.0 x 182.8 cm
Description:	<p>On the side of a mountain a cougar leaves her cubs to go off hunting. In the distance on the left side of the image you can see the baby cubs high up in the mountain in an opening of rock. The mother cougar has come down from the cubs and is located in the bottom left corner facing and heading toward the brc. In the brc what appears to be two bighorn sheep are feeding. Between the cougar and the other animals a large gorge exists. Around the cougar and the other animals light green grass is growing. In the background are more mountains blue in colour. The sky above is a light blue with some white clouds.</p>
Subject:	landscape Canadian Rockies animal cougar
Credit:	Gift of Clarence Ingwall Tillenius, Winnipeg, 1996
Catalogue Number:	TiC.02.17

Images



This material is presented as originally created; it may contain outdated cultural descriptions and potentially offensive content. [Read more.](#)



Flint's Park

<https://archives.whyte.org/en/permalink/artifactenm.12.03>

Artist: Maureen Enns (1949 – , Canadian)

Title: Flint's Park

Date: 1993

Medium: acrylic; charcoal; paper; glue on canvas

Dimensions: 104.0 x 104.0 cm

Description: Predominant colours are black, dark blue, grey and white. There is an outline of one large grizzly bear on the top two-thirds (viewer's left) of the painting, side view, painted black, and the back part is flat background painted dark blue; this extends to the bottom left. The right side is background and is painted white from top to the paw (viewer's right) to the bottom of the painting. Overlapping this a large cutout of a bear, grey, white, and black charcoal, dominates the painting. Across the top of his body is a stencilled sign: "FLINTS PARK CABIN", below this the outline of a Bighorn sheep's head, and below this "WARDEN SERVICE" "BANFF NATIONAL PARK" is stencilled across his legs. Under this bear, to the viewer's right, is the cutout of a grizzly bear's head, painted black, and his left paw which is clutching a wire. The painting is signed in the brc "Enns '93". On the unpainted part of the paper lhc: "Flint's Park - B.N.P." and lhc: "Maureen Enns 1993".

Subject: wildlife, grizzly bears

Banff National Park

Maureen Enns

warden

Credit: Gift of Masters Gallery Ltd., Calgary, 2010

Catalogue Number: EnM.12.03

Images



This material is presented as originally created; it may contain outdated cultural descriptions and potentially offensive content. [Read more.](#)



King of the Rockies

<https://archives.whyte.org/en/permalink/artifactnm.12.01>

Artist: Maureen Enns (1949 – , Canadian)

Title: King of the Rockies

Date: 1993

Medium: oil; acrylic on canvas

Dimensions: 213.3 x 152.4 cm

Description: The center of the painting is a bear turned so it is looking to the left and out of the image frame. Behind the bear is a mountain range with some snow and ice throughout. In the bottom left corner there is a skull from a bighorn sheep. The lower right hand corner has bear foot prints in black with red around them. The bear has a brown colour fur and the ground that it is standing on is blue green. The sky is also a green colour while the mountains have green shadows and white highlights. Located directly behind the bear are two black lines that crisscross as they get higher to the top of the painting.

Subject: landscape
Canadian Rockies
animal
bear

Credit: Gift of Maureen Enns, Cochrane, 1996

Catalogue Number: EnM.12.01

Images



This material is presented as originally created; it may contain outdated cultural descriptions and potentially offensive content. [Read more.](#)



Building The Dam - Busy Beavers

<https://archives.whyte.org/en/permalink/artifacttic.02.12>

Artist:	Clarence Ingwall Tillenius (1913 – 2012, Canadian)
Title:	Building The Dam - Busy Beavers
Date:	1993
Medium:	oil on canvas board
Dimensions:	30.6 x 40.7 cm
Description:	<p>A body of water starts from the cl and makes its way down into the foreground and ends up at the blc and the brc. A piece of land and rocks jet out between the blc and the brc. Standing on this piece of land a beaver is carrying a piece of wood or tree section and is heading towards the dam that he is building. All along the left side of the water there are green and orange trees. The sky above the trees is a medium blue colour. On the other side of the dam two other beavers are also working on the dam.</p>
Subject:	landscape Canadian Rockies animal beaver
Credit:	Gift of Clarence Ingwall Tillenius, Winnipeg, 1996
Catalogue Number:	TiC.02.12

This material is presented as originally created; it may contain outdated cultural descriptions and potentially offensive content. [Read more.](#)



Light on the Left Eagle

<https://archives.whyte.org/en/permalink/artifactsma.05.01>

Artist:	Alice Saltiel (1948 – , Canadian)
Title:	Light on the Left Eagle
Date:	1991
Medium:	watercolour on paper
Dimensions:	39.0 x 25.3 cm
Description:	A single mountain dominates, foreground is green trees, snow covered mountain towers to top third, between trees and peak is a bowl, cloudy sky top third
Subject:	landscape mountain winter
Credit:	Purchased from Sunshine Village, Banff, 1991
Catalogue Number:	SmA.05.01

Images



This material is presented as originally created; it may contain outdated cultural descriptions and potentially offensive content. [Read more.](#)



Near Quartz Ridge

<https://archives.whyte.org/en/permalink/artifacthez.05.01>

Artist:	Zelda F. Nelson-Henricks
Title:	Near Quartz Ridge
Date:	1991
Medium:	watercolour on paper
Dimensions:	26.3 x 35.4 cm
Description:	A mountain landscape, the foreground is covered with rocks and varied green grasses, dark green evergreens in central area, centre left to right is a mountain range with some snow, the top third is blue sky with narrow white clouds.
Subject:	landscape, mountain landscape, summer exhibition, Sunshine Art
Credit:	Purchased from Sunshine Village, Banff, 1991
Catalogue Number:	HeZ.05.01

Images



This material is presented as originally created; it may contain outdated cultural descriptions and potentially offensive content. [Read more.](#)



Bow Valley Series

<https://archives.whyte.org/en/permalink/artifactknd.02.01>

Artist:	Dorothy Elsie Knowles Perehudoff (1927 – 2023, Canadian)
Title:	Bow Valley Series
Date:	1991
Medium:	oil on linen
Dimensions:	81.2 x 101.6 cm
Description:	In the foreground are trees of green with a large group of mountains in the center back area. A large tree is on the left side of this painting and there are red and pink flowers in the foreground. The mountain is a grey brown colour and the majority of the trees and shrubs are different colours of green. The sky in the background is blue with some white cloud.
Subject:	landscape Canadian Yamnuska Dorothy Knowles
Credit:	Gift of Dorothy Elsie Knowles Perehudoff, Saskatoon, 1996
Catalogue Number:	KnD.02.01

Images



This material is presented as originally created; it may contain outdated cultural descriptions and potentially offensive content. [Read more.](#)



Blondie and Friend Icefields Parkway 1991

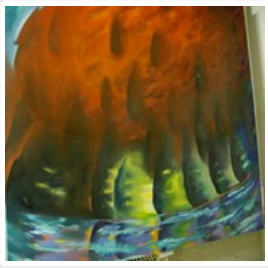
<https://archives.whyte.org/en/permalink/artifactenm.12.05>

Artist:	Maureen Enns (1949 – , Canadian)
Title:	Blondie and Friend Icefields Parkway 1991
Date:	1991
Medium:	acrylic; charcoal on canvas
Dimensions:	43.0 x 73.0 cm
Description:	Two bears done in charcoal and outlined in red paint walk in front of mountains that are in the background. The mountain range is outlined in white paint.
Subject:	mountains animal, bears Maureen Enns
Credit:	Gift of Maureen Enns, Cochrane, 2010
Catalogue Number:	EnM.12.05

Images



This material is presented as originally created; it may contain outdated cultural descriptions and potentially offensive content. [Read more.](#)



Thunder

<https://archives.whyte.org/en/permalink/artifactmib.02.01>

Artist:	Barbara Milne (1956 – , Canadian)
Title:	Thunder
Date:	1990
Medium:	oil; acrylic on canvas
Dimensions:	167.6 x 160.0 cm
Description:	A large red mass dominates the painting, from the foreground blue, green, yellow tube-shapes spiral upwards, top left corner is blue
Subject:	abstract expressionist
Credit:	Gift of Barbara Milne, Calgary, 1992
Catalogue Number:	MiB.02.01

Images



This material is presented as originally created; it may contain outdated cultural descriptions and potentially offensive content. [Read more.](#)



Emergence

<https://archives.whyte.org/en/permalink/artifacthdd.02.01>

Artist:	Dan Hudson (1959 – , Canadian)
Title:	Emergence
Date:	1990
Medium:	oil on canvas
Dimensions:	160.0 x 160.0 cm
Description:	<p>In the center of the painting there is a white outline of a nude male figure. The face down figure has one arm outstretched in front and the other outstretched to the side. Off set to the lower left a bit, is the same male again but this time with his body painted in black, white and purple. Also in the same area there is a wolf leaning down to get a drink of water and directly beneath that wolf is his reflection that looks like another wolf. Both wolves are purple with white highlights. At the top left corner there is a ring of fire, orange and red in colour. The background behind the above mentioned is black and the paint has been applied very thick (almost impasto in some places). The frame for the canvas is made out of natural wood poles and the ends stick out at each corner and cross over each other.</p>
Subject:	<p>figure</p> <p>male</p> <p>animal</p> <p>wolf</p> <p>mythological</p>
Credit:	Gift of Dan Hudson, Canmore, 1993
Catalogue Number:	HdD.02.01

This material is presented as originally created; it may contain outdated cultural descriptions and potentially offensive content. [Read more.](#)



Coming Together

<https://archives.whyte.org/en/permalink/artifacttic.02.13>

Artist:	Clarence Ingwall Tilenius (1913 – 2012, Canadian)
Title:	Coming Together
Date:	1990
Medium:	oil on canvas board
Dimensions:	20.4 x 25.4 cm
Description:	A group of bison gather in a wooded area. The woods seem very thick therefore the tone is very dark. The wooded area is a brown, purple colour and the open area in the foreground is a light brown and yellow colour. Out in the foreground a bison is standing with his back facing the left edge of the image and appears to be walking toward the others in the woods.
Subject:	animal Bison
Credit:	Gift of Clarence Ingwall Tilenius, Winnipeg, 1996
Catalogue Number:	TIC.02.13

This material is presented as originally created; it may contain outdated cultural descriptions and potentially offensive content. [Read more.](#)



Cascade

<https://archives.whyte.org/en/permalink/artifactmij.05.03>

Artist:	Janet Holly Middleton (1922 – 2018, Canadian)
Title:	Cascade
Date:	1988
Medium:	watercolour on paper
Dimensions:	42.2 x 58.1 cm
Description:	The mountain, a realistic rendering of Cascade Mountain in Banff National Park, is light blue and grey, covers most of the picture, cloudy sky top edge, foreground left is a road, to the right of road is a clump of yellow trees among some evergreens and grasses
Subject:	landscape mountain Cascade Mountain
Credit:	Gift of Janet Holly Middleton, Banff, 1991
Catalogue Number:	MiJ.05.03

Images



This material is presented as originally created; it may contain outdated cultural descriptions and potentially offensive content. [Read more.](#)



Autumn Leaves Falling

<https://archives.whyte.org/en/permalink/artifacttic.02.08>

Artist: Clarence Ingwall Tillenius (1913 – 2012, Canadian)
Title: Autumn Leaves Falling
Date: 1988
Medium: oil on canvas board
Dimensions: 25.4 x 51.0 cm
Description: The small red fox on the left side of the image is standing on a grey slab of stone. Two other similar slabs are near by and are separated from the first by two wide cracks. All around the grey rock area the trees are turning fall colors. The red, yellow and orange leaves are falling off the trees onto the ground. Some of the trees on the left and a few in the background on the right have white bark. The fox in the foreground on the left is looking back over his shoulder to the right.
Subject: landscape
Canadian; animal; fox
Credit: Gift of Clarence Ingwall Tillenius, Winnipeg, 1996
Catalogue Number: TiC.02.08

This material is presented as originally created; it may contain outdated cultural descriptions and potentially offensive content. [Read more.](#)



Towards Wildhorse Creek

<https://archives.whyte.org/en/permalink/artifactkim.05.01>

Artist:	Marilyn Kinsella
Title:	Towards Wildhorse Creek
Date:	1987
Medium:	watercolour on paper
Dimensions:	55.0 x 74.0 cm
Description:	A realistic rendering of a mountain landscape. The top third is a pale blue wash, fading lighter near the mountain range, a snow covered peak is dominant centre. A dark blue slope indicating forest in bottom left while a light brown slope dominates the right bottom.
Subject:	landscape, mountain Canadian Rockies
Credit:	Eleanor G Luxton, Banff, 1987
Catalogue Number:	KiM.05.01

Images



This material is presented as originally created; it may contain outdated cultural descriptions and potentially offensive content. [Read more.](#)



From Sulphur Mountain III

<https://archives.whyte.org/en/permalink/artifactkhj.05.01>

Artist:	Josette Khu (1933 – , Canadian)
Title:	From Sulphur Mountain III
Date:	1987
Medium:	watercolour on paper
Dimensions:	55.0 x 43.0 cm
Description:	The top part of a mountain dominates the top half of the picture, it is shrouded in clouds and fog.
Subject:	landscape mountain
Credit:	Purchased from Virginia Christopher Galleries, Calgary, 1987
Catalogue Number:	KhJ.05.01

Images



This material is presented as originally created; it may contain outdated cultural descriptions and potentially offensive content. [Read more.](#)