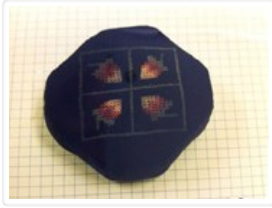


## Research Collections

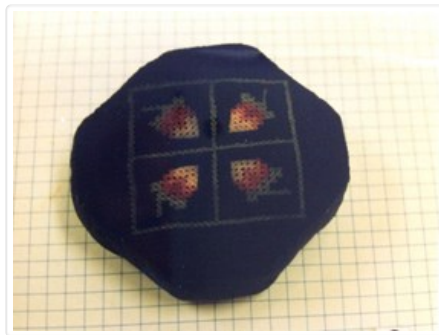


### Pincushion

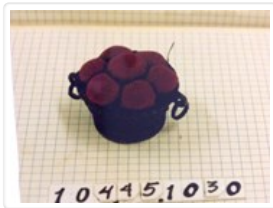
<https://archives.whyte.org/en/permalink/artifact104.45.1029>

Title:	Pincushion
Date:	1820 – 1850
Material:	fibre; paper
Dimensions:	2.5 cm
Description:	A green octagonal shaped pincushion with needlework design. A square with 4 strawberries in red, green, white on one side and a square with 4 abstract designs on the other.
Subject:	households sewing needlework Mary Schaffer Warren
Credit:	Gift of Charles C. Reid, Banff, Alberta, 1986
Catalogue Number:	104.45.1029

### Images



This material is presented as originally created; it may contain outdated cultural descriptions and potentially offensive content. [Read more.](#)

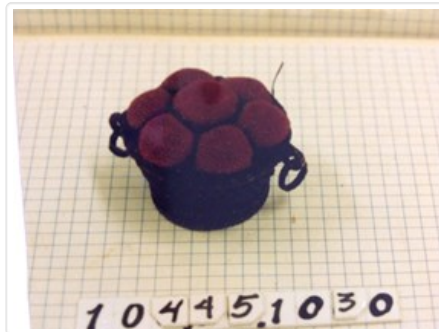


## Pincushion

<https://archives.whyte.org/en/permalink/artifact104.45.1030>

Title:	Pincushion
Date:	1820 – 1850
Material:	fibre; wood
Dimensions:	5.0 cm
Description:	A pincushion shaped in a lattice woven basket full of red fabric green and red strawberries.
Subject:	households needlework Mary Schaffer Warren
Credit:	Gift of Charles C. Reid, Banff, Alberta, 1986
Catalogue Number:	104.45.1030

## Images



This material is presented as originally created; it may contain outdated cultural descriptions and potentially offensive content. [Read more.](#)