



### A map of America ... exhibiting Mackenzie's track from Montreal to Fort Chipewyan and from thence to the North Sea in 1789 & to the West Pacific Ocean in 1793

<https://archives.whyte.org/en/permalink/catalogue24546>

Publisher: London : A.M.  
Published Date: 1801  
Physical Description: 1 map  
Scale: Scale indeterminable  
Medium: Library - Maps and blueprints (unannotated; published)  
Map  
Subjects: Mackenzie, Alexander  
Accession Number: 5241  
Call Number: C11-1.8  
Collection: Archives Library

This material is presented as originally created; it may contain outdated cultural descriptions and potentially offensive content. [Read more.](#)



### New discoveries in the Interior

<https://archives.whyte.org/en/permalink/catalogue21493>

Published Date: 1802  
Medium: Library - Maps and blueprints (unannotated; published)  
Map  
Subjects: North America  
Notes: four sections  
Photostatic copy from Public Archives  
Accession Number: 675  
Call Number: C12-1.18  
Collection: Archives Library

This material is presented as originally created; it may contain outdated cultural descriptions and potentially offensive content. [Read more.](#)



## Area of the Upper Missouri and Rocky Mts.

<https://archives.whyte.org/en/permalink/catalogue21495>

Published Date: 1801  
Medium: Library - Maps and blueprints (unannotated; published)  
Map  
Subjects: Indian Map  
Notes: Photostatic copy from Public Archives  
two sections  
Accession Number: 675  
Call Number: C12-1.20  
Collection: Archives Library

This material is presented as originally created; it may contain outdated cultural descriptions and potentially offensive content. [Read more.](#)



## "Skeleton plan showing location of 'Kootenae House' built by David Thompson, 1807"

<https://archives.whyte.org/en/permalink/catalogue23292>

Responsibility: Basil G. Hamilton, Invermere, B.C.  
Publisher: J.B. Tyrrell papers  
Published Date: 1807  
Scale: 606' - 1"  
Medium: Library - Maps and blueprints (unannotated; published)  
Map  
Subjects: Kootenae  
Notes: Photostatic copy from Public Archives From J.B. Tyrrell papers,  
transferred from the manuscript division Nov. 6, 1962  
Accession Number: 675  
Call Number: C4-5.3  
Collection: Archives Library

This material is presented as originally created; it may contain outdated cultural descriptions and potentially offensive content. [Read more.](#)



## The Columbia River highway : America's greatest scenic drive

<https://archives.whyte.org/en/permalink/catalogue20084>

Author: Cross and Dimmitt

Published Date: 1801

Physical Description: Portland, Oregon : Cross and Dimmitt

Medium: Library - Book (including soft-cover and pamphlets)

Subjects: Columbia River

Art

Travel

Tourism

Abstract: Pertains to a collection of hand colored images showcasing the beauty of Oregon in the United States of America. The publication follows the Columbia River highway, a stretch of road reaching west from Portland to the Pacific, and east to Central Oregon. The publication showcases various tourist locations in addition to other breathtaking hand-colored images.

Accession Number: 3069 a

Call Number: 02.3 C87t

Collection: Archives Library

This material is presented as originally created; it may contain outdated cultural descriptions and potentially offensive content. [Read more.](#)



## Napoleon Premier

<https://archives.whyte.org/en/permalink/artifactunk.04.04>

Artist:	Unknown
Title:	Napoleon Premier
Date:	1800
Medium:	engraving on paper
Dimensions:	46.7 x 38.0 cm
Description:	A reproducing drawing of Napoleon. In a brown frame with a gold crown at the top and "N" at the bottom.
Subject:	portrait male
Credit:	Gift of Pearl Evelyn Moore, Banff, 1979
Catalogue Number:	UnK.04.04

### Images



This material is presented as originally created; it may contain outdated cultural descriptions and potentially offensive content. [Read more.](#)



## Scatter Pin

<https://archives.whyte.org/en/permalink/artifact103.01.1016>

Title:	Scatter Pin
Date:	1806 – 1816
Material:	metal
Dimensions:	0.6 cm
Description:	made of cutout Mexican peso, with eagle at middle, silver coin has been cut out around the figure of an eagle, its wings outspread, also around each letter of the words "Republica Mexicana" above, and the date below (1816?), on the back of the eagle is a "10" [the other side of the coin] simple safety pin type clasp soldered horizontally across back.
Subject:	souvenirs foreign money
Credit:	Gift of Forrest (Pat) Oliver Brewster, Banff, 1970
Catalogue Number:	103.01.1016

## Images



This material is presented as originally created; it may contain outdated cultural descriptions and potentially offensive content. [Read more.](#)



## Canteen

<https://archives.whyte.org/en/permalink/artifact103.08.0157>

Title:	Canteen
Date:	1800 – 1900
Material:	fruit, gourd; wood; fibre
Description:	A canteen made from a circular dried gourd that has a wooden neck screwed in to one side. There are also two twisted basket loops attached to opposite sides of the canteen used to hold a long green carrying strap. The gourd has lettering printed on one side that reads "Souvr...de Chamounix...Mont Blanc..Hote H.P. de Savoie". The lettering is around a French horn with a yellow lyre at its centre.
Subject:	camping military insignia
Credit:	Gift of Pearl Evelyn Moore, Banff, 1979
Catalogue Number:	103.08.0157

## Images



This material is presented as originally created; it may contain outdated cultural descriptions and potentially offensive content. [Read more.](#)



## Dagger

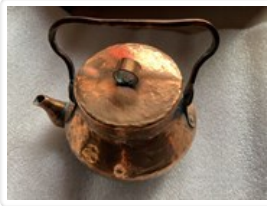
<https://archives.whyte.org/en/permalink/artifact104.05.0001>

Title:	Dagger
Date:	1800 – 1880
Material:	metal, iron; skin
Dimensions:	26.5 cm
Description:	A hand forged iron 'beaver tail' dagger with a pointed, triangular shaped blade attached to a narrow shaft which leads into a hilt with a cross piece. There is a piece of thong tied through the handle. The handle of the dagger is almost as long as blade
Subject:	households trading
Credit:	Gift of Pearl Evelyn Moore, Banff, 1979
Catalogue Number:	104.05.0001

## Images



This material is presented as originally created; it may contain outdated cultural descriptions and potentially offensive content. [Read more.](#)



## Teakettle Kettle

<https://archives.whyte.org/en/permalink/artifact104.19.0012>

Title:	Teakettle Kettle
Date:	1800 – 1875
Material:	metal
Dimensions:	13.5 cm
Description:	A round copper-plated teakettle with wide belly leading to a narrower neck. The kettle has a flat lid with a small loop strap handle. The kettle's heavy handle, flattened at the top, attaches above the stub spout and on the opposite side.
Subject:	social customs households
Credit:	Gift of Pearl Evelyn Moore, Banff, 1979
Catalogue Number:	104.19.0012

## Images



This material is presented as originally created; it may contain outdated cultural descriptions and potentially offensive content. [Read more.](#)





## Sauceboat

<https://archives.whyte.org/en/permalink/artifact104.20.0027>

Title:	Sauceboat
Date:	1800 – 1900
Material:	metal, silver
Dimensions:	4.5 x 12.5 (overall) cm
Description:	A round-bottomed, oval-shaped, silver sauceboat with a mouth extended opposite the handle to form a pouring lip. There is a simple thin loop handle attached at the outside rim. The handle curls inward, over the lip, and is attached at the inside of the rim. The sauceboat is supported by three delicate outward curving legs that are attached to the sides of the bottom. There is a rough texture to the outside surface of the body of sauceboat. The sauceboat is hallmarked Sterling Silver.
Subject:	households social customs
Credit:	Gift of Pearl Evelyn Moore, Banff, 1979
Catalogue Number:	104.20.0027

## Images



This material is presented as originally created; it may contain outdated cultural descriptions and potentially offensive content. [Read more.](#)



## Serving Tray

<https://archives.whyte.org/en/permalink/artifact104.20.0031>

Title:	Serving Tray
Date:	1800 – 1900
Material:	metal
Dimensions:	46.0 x 75.0 cm
Description:	A rectangular, silver-plated copper tray with rounded corners that stands on four short ornate legs that curl upward at the feet. The tray has a fairly large ornate silver handle at each end. The tray has heavy silver trim along the edge.
Subject:	households social customs
Credit:	Gift of Pearl Evelyn Moore, Banff, 1979
Catalogue Number:	104.20.0031

## Images



This material is presented as originally created; it may contain outdated cultural descriptions and potentially offensive content. [Read more.](#)



## Napkin Ring

<https://archives.whyte.org/en/permalink/artifact104.20.0069>

Title:	Napkin Ring
Date:	1800 – 1900
Material:	metal, pewter
Dimensions:	3.5 cm
Description:	A wide pewter napkin ring with etched and textured borders. The napkin ring is decorated with etched flowers on stems around the plain band in the middle. The napkin ring is engraved "V.T. from Mother".
Subject:	households social customs gifts
Credit:	Gift of Pearl Evelyn Moore, Banff, 1979
Catalogue Number:	104.20.0069

## Images



This material is presented as originally created; it may contain outdated cultural descriptions and potentially offensive content. [Read more.](#)



## Serving Spoon

<https://archives.whyte.org/en/permalink/artifact104.20.0074>

Title:	Serving Spoon
Date:	1800 – 1900
Material:	metal, silver
Dimensions:	12.0 cm
Description:	A sterling silver serving spoon in the shape of a large ovate leaf with the stem curling into a loop to form the handle. The bowl of the spoon contains an interlaced monogram "MTP" (?). The spoon is marked with "Sterling D".
Subject:	households plants
Credit:	Gift of Pearl Evelyn Moore, Banff, 1979
Catalogue Number:	104.20.0074

## Images



This material is presented as originally created; it may contain outdated cultural descriptions and potentially offensive content. [Read more.](#)



## Salver

<https://archives.whyte.org/en/permalink/artifact104.20.0089>

Title:	Salver
Date:	1800 – 1900
Material:	metal, brass; metal, silver
Description:	A round silver plated brass plate with heavy trim along the shaped outer edge. The bottom is marked with "S.E.".
Subject:	households
Credit:	Gift of Pearl Evelyn Moore, Banff, 1979
Catalogue Number:	104.20.0089

## Images



This material is presented as originally created; it may contain outdated cultural descriptions and potentially offensive content. [Read more.](#)



## Poster Bed

<https://archives.whyte.org/en/permalink/artifact102.03.0017>

Title:	Poster Bed
Date:	1800 – 1825
Material:	wood, mahogany
Dimensions:	216.0 x 164.0 x 212.0 cm
Description:	A four poster double bed with turned and hand carved posts. The plain headboard is topped by hand carved figures, including two griffins and a pineapple.
Subject:	households furniture Mary Schaffer
Credit:	Gift of Pearl Evelyn Moore, Banff, 1979
Catalogue Number:	102.03.0017

## Images



This material is presented as originally created; it may contain outdated cultural descriptions and potentially offensive content. [Read more.](#)



## Cabinet

<https://archives.whyte.org/en/permalink/artifact102.03.0029>

Title:	Cabinet
Date:	1800 – 1900
Material:	wood, mahogany; glass; fibre
Dimensions:	174.0 x 47.5 x 101.5 cm
Description:	A cabinet with two parts; an upper cabinet that is attached to a lower bureau. The upper cabinet has two glass-front doors and three shelves. The lower bureau has three drawers and a fold-out leaf that can serve as a desk.
Subject:	households furniture
Credit:	Gift of Pearl Evelyn Moore, Banff, 1979
Catalogue Number:	102.03.0029

## Images



This material is presented as originally created; it may contain outdated cultural descriptions and potentially offensive content. [Read more.](#)



## Occasional Chair

<https://archives.whyte.org/en/permalink/artifact102.03.0046>

Title:	Occasional Chair
Date:	1800 – 1900
Material:	wood, mahogany; fibre; plastic
Dimensions:	104.0 x 61.0 x 61.5 cm
Description:	Mahogany framed armchair with upholstered back and seat cushion. The upholstery is peach-coloured brocade. There is scroll carving on the sides of wooden arms. Plastic casters have been put on the two front legs only.
Subject:	households furniture
Credit:	Gift of Pearl Evelyn Moore, Banff, 1979
Catalogue Number:	102.03.0046

## Images



This material is presented as originally created; it may contain outdated cultural descriptions and potentially offensive content. [Read more.](#)





## Doily

<https://archives.whyte.org/en/permalink/artifact102.04.0024>

Title:	Doily
Date:	1800 – 1840
Material:	fibre, cotton
Dimensions:	14.0 x 24.0 cm
Description:	Two very delicate guipure lace doilies. Guipure is lace where the patterns are held together by connecting threads rather than to mesh or net ground, as in filet lace. Oval in shape these doilies have designs based on circles. Both are slightly yellowed.
Subject:	households decorative crafts needlework
Credit:	Gift of Pearl Evelyn Moore, Banff, 1979
Catalogue Number:	102.04.0024

## Images



This material is presented as originally created; it may contain outdated cultural descriptions and potentially offensive content. [Read more.](#)



## Marking Stamp

<https://archives.whyte.org/en/permalink/artifact105.06.0023>

Title:	Marking Stamp
Date:	1800 – 1825
Material:	wood; metal, brass
Dimensions:	3.0 x 3.0 x 9.0 cm
Description:	Oval brass gold seal attached to a highly finished turned wooden handle with a large round knob at the end. The seal is a standing female figure with a spear holding a shield with cross on it. A note attached reads: "Antique Gold Seal; c.1800."
Subject:	households business correspondence symbols office
Credit:	Gift of Pearl Evelyn Moore, Banff, 1979
Catalogue Number:	105.06.0023

## Images



This material is presented as originally created; it may contain outdated cultural descriptions and potentially offensive content. [Read more.](#)