



## Travel and home records

<https://archives.whyte.org/en/permalink/descriptions55646>

Part Of: Luxton family fonds

Description Level: 3 / Series

Fonds Number: LUX

Series: LUX / II / E : Travel and home records

Sous-Fonds: LUX / II : Eleanor Luxton sous-fonds

Accession Number: LUX

Reference Code: LUX / II / E

GMD: Textual record  
Photograph  
Print  
Negative  
Transparency

Date Range: [ca.1900] - 1992

Physical Description: 27.5 cm of textual records (5 scrapbooks ; 0.5 cm newspaper clippings) -  
- 7 albums -- 1,345 photographs (1,083 b&w and col. prints ; 257 b&w  
and col. negatives ; 5 col. transparency slides)

### Scope & Content:

Series consists of scrapbooks, albums, photographs and textual records pertaining to Eleanor Luxton's domestic and international travels, and Eleanor's life in Banff. Includes records pertaining to Japan, Panama, Hawaii, and China; local events, including the Calgary Stampede, Banff Indian Days and a celebration marking the coronation of Queen Elizabeth II; Canadian trips, including the Okanagan region, Seebe and Jasper National Park; and the Luxton family home in Banff.

Name Access: Luxton, Eleanor

Subject Access: Family and personal life  
Travel  
Exploration  
Home

Geographic Access: Canada  
Canadian Rocky Mountains  
Alberta  
British Columbia  
Banff  
Quebec  
United States of America  
Panama  
Japan  
China

Language: English

Category: Family and personal life  
Exploration, discovery and travel

Title Source: Title based on contents of file  
Processing Status: Processed

This material is presented as originally created; it may contain outdated cultural descriptions and potentially offensive content. [Read more.](#)



## Property Reports

<https://archives.whyte.org/en/permalink/descriptions55573>

Part Of: Canadian Pacific Railway fonds  
Description Level: 3 / Series  
Fonds Number: M584 / V782  
Series: I : organizational records  
Sous-Fonds: M584  
Accession Number: 303, 304, 1471, 1086, 1544, 3288, 6740, 7071, 2021.18  
Reference Code: M584 / I / 01 - 07  
GMD: Organization record  
Textual record  
Date Range: [ca.1925]  
Physical Description: 5 cm of textual records

### Scope & Content:

File pertains to reports pertaining to various properties throughout the Canadian Rockies. Some of the reports were compiled by Canadian Pacific Hotels Architectural Engineer Ed Steel. Reports outline the costs of materials and goods needed for or provided by bungalow camps, lodges, tea houses, backcountry camps, huts, and hotels, as well as dimensions of new additions to buildings/camps.

Properties include Banff Springs Hotel, Chateau Lake Louise, Calgary Palliser Hotel and Station, Glacier House, Lake O'Hara, Yoho Valley, Radium Hot Springs, Moraine Lake, Lake Agnes, Plain of Six Glaciers, Mt. Assiniboine, Lake Windermere Ranch, Saddleback Rest House, Abbott Pass Hut, Sunshine Valley, Mystic Lake, Shadow Lake, Castle Mountain, Emerald Lake, and more.

Notes: Some records absorbed from old M48.  
Name Access: Canadian Pacific Railway  
Subject Access: Buildings  
Buildings and facilities  
Camps  
Construction  
Environment  
Huts  
Tourism  
Trains  
Transportation

Geographic Access: Banff National Park  
Jasper National Park  
Yoho National Park  
Glacier  
Alberta  
British Columbia  
Canada

Language: English

Title Source: Title based on contents of file

Processing Status: Processed

This material is presented as originally created; it may contain outdated cultural descriptions and potentially offensive content. [Read more.](#)



## Canadian Pacific film

<https://archives.whyte.org/en/permalink/descriptions55575>

Part Of: Canadian Pacific Railway fonds

Description Level: 3 / Series

Fonds Number: M584 / V782

Series: II : screenplay

Sous-Fonds: M584

Accession Number: 3502

Reference Code: M584 / II / 01

GMD: Organization record  
Textual record

Date Range: [ca.1925]

Physical Description: 5 cm of textual records

Scope & Content:

File pertains to the screenplay for the 1948 film "Canadian Pacific" by Jack DeWitt. The film was made in Banff, directed by Nat Holt, and follows the construction of the line through the Rockies in the 1880s.

Notes: Record absorbed from old M48.

Name Access: Canadian Pacific Railway

Subject Access: Buildings  
Buildings and facilities  
Camps  
Construction  
Environment  
Huts  
Tourism  
Trains  
Transportation

Geographic Access: Banff  
Lake Louise  
Banff National Park  
Jasper National Park  
Yoho National Park  
Glacier  
Alberta  
British Columbia  
Canada

Language: English

Title Source: Title based on contents of file

Processing Status: Processed

This material is presented as originally created; it may contain outdated cultural descriptions and potentially offensive content. [Read more.](#)



## Catharine Robb Whyte papers and photographs

<https://archives.whyte.org/en/permalink/descriptions827>

Part Of: Peter and Catharine Whyte fonds

Description Level: 3 / Series

Fonds Number: M36 / V683 / S37

Series: I.A. Catharine Robb Whyte papers and photographs series

Sous-Fonds: S37

Accession Number: 3069

Reference Code: M36 / S37 / V683 / I / A

Date Range: 1906 - 1980

Physical Description: 20.5 m of textual records (and ca.200 oversize items). -- ca.12,300 photographs (ca.5000 prints, ca.4000 negatives, ca.3300 transparencies, 3 albums of ca.1000 prints, 6 motion pictures).

## History /

### Biographical:

Catharine Robb Whyte, 1906-1979, was an artist, outdoor enthusiast, traveller, philanthropist and cultural worker at Banff, Alberta. Born in Concord, Massachusetts, Catharine Robb grew up amongst the wealth and creativity of the Robb and Morse families. Following schooling in Concord and Providence Rhode Island, she studied at the School of the Museum of Fine Arts in Boston from 1925 until 1929. There she met Peter Whyte, a fellow art student from Banff, Alberta and they married in 1930.

The Whytes pursued a life of painting, photography, hiking, skiing and travelling. Their log home and studio in Banff became a focal point for their artist friends, Stoney Nakoda First Nations and local pioneers. Catharine shared Pete's involvement in skiing and hiking organizations such as the Ski Club of the Canadian Rockies and the Skyline Trail Hikers of the Canadian Rockies. From 1932 until 1934, she and Pete managed Skoki Lodge. During the Second World War, Catharine continued to paint, maintain her home and when possible, accompany Pete to his various military postings.

Throughout the 1950s and 1960s the Whytes formulated plans for a foundation to preserve the art and history of the Canadian Rockies. Plans for a building to house an archives, public library and gallery were in preparation when Pete died in 1966. Catharine immersed herself in the development of the Peter Whyte Foundation (now the Whyte Museum of the Canadian Rockies), in the cultural community, painting, outdoor activity, travel and work with the Stoney Nakoda First Nation. Catharine became a more active photographer, recording her travels and outdoor pursuits on transparency film and later on Kodacolor negative film. Catharine continued to use her old Leica rangefinder camera and, in 1974, acquired a Leica M5 with an integrated light meter.

Catharine Whyte served in an official capacity with numerous cultural and charitable organizations. Among her official duties, Catharine served as a Governor, Banff Centre Council; Member, Board of Governors, Glenbow-Alberta Institute; President, Peter Whyte Foundation; Member, Minister's Advisory Committee on Native Education; and Member, By-law Committee, Stoney Development Society. She was a patron to individuals studying art and music and supported the following causes: Stoney Nakoda First Nation Handicrafts, Stoney Administration Building, Banff Recreational Centre, Margaret Greenham Theatre, cancer research, and the Catharine Whyte Multicultural Centre in Cold Lake, Alberta.

Despite her modesty and often anonymous patronage of causes, Catharine was recognized with the following awards and honours: Honorary Doctorate, University of Calgary, 1969; Outstanding Citizen of the Year, Banff Kiwanis Club, 1969; Honorary Chief, Stoney Nakoda First Nation, 1973; Alberta Achievement Award, Province of Alberta, 1975; Award of Merit, Historical Society of Alberta, 1978; and the Order of Canada, 1978.

### Scope & Content:

Series consists of the following sub-series: 1. Personal papers, 1918- 1979; 2. Correspondence, 1862-1979; 3. Financial, legal and business papers, 1901-1979; 4. Professional activities and interests, 1906-1980; 5. Topical files, 1881- 1978; 6. Photographs, ca.1920-1979; 7. Postcard albums, 1903- 1924. Includes extensive diaries and correspondence between Catharine Robb Whyte and her mother, family and friends. Of particular interest are Whyte's outgoing letters. Other papers arise out of her business and philanthropic activities, interest and activity in art, winter sports, recreation, museums, cultural organizations, photography, environmental issues and Stoney Nakoda First Nation.

Photographic material was produced and collected by Catharine Robb Whyte prior to 1930 and after Peter Whyte's death in 1966. Included are prints, albums and negatives, ca.1924-1930, pertaining to family trips, school activities, travels, home, friends and family. The largest series consist of colour prints and negatives (ca.7200 items) and colour transparencies (3319 items) pertaining to family and friends, mountain trips, scenics and world travels, 1966-1979. Remaining material include prints, motion pictures and video recording collected by Catharine Whyte; mainly friends, family, personal and Banff events, ca.1920-1979.

Access Restrictions:	Access to photographs requires permission in advance from the Head Archivist.
Finding Aid:	Sub-series-level outline is available. Inventory is available in printed form and through this database. Description of photographs is at sub-series level only. Printed inventory provides more description than computer database for photographs.
Related Material:	Consitutes Sous-fonds I, Series A of Peter and Catharine Whyte fonds. Other photographs by Catharine Whyte are found in Sous-fonds I, Series C.
Title Source:	Title based on material
Content Details:	Catharine Robb Whyte Photographs - Forms part of Sous-fonds I, Series A of the Peter and Catharine Whyte fonds.

The earliest photographs directly attributable to Catharine Robb were taken on the family trip to Europe in 1924. Russell Robb produced three meticulous albums from this trip, two utilizing his own photographs and one composed of Catharine's. (A photo taken at Versailles shows Catharine operating a folding camera which produced the 6 x 10.5 cm. images for her travel album). A number of photographs and albums from the mid 1920s are attributable to Catharine -- photographs depicting friends and events at Mary C. Wheeler School and sailing trips at Seal Harbor, Maine -- but she does not appear to have been a prolific photographer prior to her marriage to Peter Whyte in 1930.

Following Peter Whyte's death in 1966, Catharine became a very active photographer. She took up downhill skiing again and began to travel extensively in Canada and abroad, recording most of these activities on transparency film. In the 1970s, she began exposing Kodacolor negative film. She found that prints were more easily displayed to friends and relatives than were slides, so she favoured colour prints for the remainder of her life. She utilized slide film on only a few extended trips after the mid 1970s.

Though friends and relatives tried to convince her that a single lens reflex camera system would be more convenient and versatile than her old Rangefinder camera, Catharine remained devoted to her old Leica, and in 1974 she paired it with a Leica M5 -- the first Leica with an integrated light meter. She used this camera until her death.

Processing Status: Processed

This material is presented as originally created; it may contain outdated cultural descriptions and potentially offensive content. [Read more.](#)



## Peter Whyte papers and photographs

<https://archives.whyte.org/en/permalink/descriptions828>

Part Of: Peter and Catharine Whyte fonds

Description Level: 3 / Series

Fonds Number: M36 / V683 / S37  
Series: I.B. Peter Whyte papers and photographs series  
Accession Number: 3069  
Reference Code: M36 / S37 / V683 / I / B  
Date Range: 1905-1964  
Physical Description: 73 cm of textual records. -- ca.3400 photographs (ca.2000 prints, ca.1400 negatives, 3 albums of ca.300 prints).

#### History /

#### Biographical:

Peter Whyte, 1905-1966, was an artist, photographer, outdoor enthusiast, traveller and philanthropist at Banff, Alberta. Born in Banff, Alberta to pioneer Banff merchant Dave White and Annie (Curren) White, Peter Whyte took advantage of the many opportunities for winter sports afforded by the mountains, becoming an accomplished skier and ski jumper. He was one of the region's first native-born painters with an intimate knowledge of the mountains. Whyte studied cartooning by correspondence and was encouraged by resident and visiting artists to pursue an art career, first at the Otis Art Institute, Los Angeles, 1923-1924, and in 1925 at the School of the Museum of Fine Arts, Boston where he met Catharine Robb.

Peter Whyte's varied activities included driving Hollywood stars to mountain motion picture locations, escorting groups of Chinese workers for the Canadian Pacific Railway, painting with Belmore Browne and J. E. H. MacDonald and travelling around the world by steamer. Following his marriage to Catharine, their painting flourished and their involvement in early ski development at Skoki occupied their winters. The accidental death of one of their ski guests had a profound effect on Pete and they left the ski business to travel.

During the war, Whyte served in the reserve army, Banff Company of the Calgary Highlanders and later with the Royal Canadian Air Force as a photographer. He served briefly as an official war artist. In civilian life he resumed his art career, explored new photographic technologies and sculpted. Cataracts interrupted his work during the 1950's. Declining health plagued Whyte and after a protracted illness he died in 1966. The Peter Whyte Foundation (later the Peter and Catharine Whyte Foundation) was named in his honor.

#### Scope & Content:

Series consists of the following sub-series: 1. Personal papers, 1905-1956; 2. Correspondence, 1909-1962; 3. Financial, legal and business papers, 1914-1964; 4. Professional activities and interests, 1920-1961; 5. Photographs, ca.1900-1930.

Textual records pertain to Whyte's interests, influences and friendships prior to his marriage; also to Catharine Robb Whyte, Peter Whyte's travels, artwork, photography and skiing. Includes material arising from Whyte's Army and Air Force career and his involvement in the Sky Line Trail Hikers of the Canadian Rockies and Trail Riders of the Canadian Rockies. Correspondents include Belmore Browne, John Murray Gibbon, Lawren Harris, J. E. H. MacDonald, Aldro Hibbard, Carl Rungius.

Photographs consist of 1390 negatives and ca.500 corresponding prints by Peter Whyte dating from the time he began photography, ca.1920, until his marriage to Catharine Robb in 1930. Negative formats include vest pocket (4 x 6 cm) and 16mm roll film (8.3 x 11 cm). Material pre-dating 1920 may have been taken by another family member. Photographs pertain to scenic views in the Banff-Lake Louise area, Banff and area events, friends and activities, mountain trips and world travels. Also includes prints of friends, relatives and promotional views of national parks collected by Peter Whyte and photograph albums assembled by Whyte pertaining to family and friends, winter sports, Banff Winter Carnival and motor trips.

Subject Access:	<p>Banff</p> <p>Banff National Park</p> <p>Films and film making M</p> <p>Photography M</p> <p>Royal Canadian Air Force M</p> <p>Skiing</p> <p>Whyte, Catharine Robb M</p> <p>World War II, 1939-1945 M</p>
Access Restrictions:	Access to photographs requires permission in advance from the Head Archivist.
Finding Aid:	Sub-series-level outline available. Inventory available in printed form and through this database. Photographs are described at the sub-series level only. Printed inventory provides more detail than the database for photographs.
Related Material:	Constitutes Sous-fonds I, Series B of the Peter and Catharine Whyte fonds. Other photographs by Peter Whyte are found in Sous-fonds I, Series C.
Title Source:	Title based on contents of series
Content Details:	Forms part of Sous-fonds I, Series B of the Peter and Catharine Whyte fonds.
	<p>With the acquisition of a vest pocket camera around 1920, at approximately 15 years of age, Peter Whyte's very prolific photographic career began. (While vest pocket images -- 4 x 6 cm. negatives -- appear in the White family collection as early as 1917, none of these can be positively identified as being taken by Peter; it seems more likely that the camera was utilized by Annie, Clifford, or even Lila, and then handed down to Peter.) The earliest photograph of Peter handling a camera was taken on a family trip to the western U.S. in 1921. Indeed, many of his early photographs were taken on these family motor camping trips.</p> <p>In late 1922 or early 1923, Peter acquired an Ica roll film camera (3 x 4 inch negative) which he used throughout his marriage to Catharine Robb and into the early 1930s. A large number of photographs were made with this camera, particularly in the 1923-1924 period. During his trip around the world in 1929, he returned briefly to the vest pocket format, probably for the sake of convenience.</p>
Processing Status:	Processed.

This material is presented as originally created; it may contain outdated cultural descriptions and potentially offensive content. [Read more.](#)





## Postcard albums. -- 1903-1924

<https://archives.whyte.org/en/permalink/descriptions9001>

Part Of: Peter and Catharine Whyte fonds  
Description Level: 3 / Series  
Fonds Number: M36 / V683 / S37  
Series: I.A.7. Catharine Robb Whyte papers / photographs  
Reference Code: M36 / I / A / 7 / 1860 - 1867  
Date Range: 1903-1924  
Physical Description: 8 vol of textual records  
Scope & Content:

Miscellaneous postcards collected by Catharine, some annotated, mainly United Kingdom and Europe, ca.1903-1913; miscellaneous postcards collected by Catharine, some annotated - Canada and United States, ca.1905-1916; miscellaneous postcards collected by Catharine, some annotated - Western Canada, Japan and United States, ca.1906-1911; miscellaneous postcards collected by Catharine, some annotated - illustrated postcards; photographic postcards of Robb family property in Concord; postcards of Seal Harbour, Maine and Scotland, ca.1907-1913; illustrated children's postcards collected by Catharine, ca.1910; postcards of England collected by Catharine, possibly during 1924 trip; postcards of England and Scotland collected by Catharine, some possibly during 1924 trip, ca.1913, ca.1924; postcards of England, Scotland and Wales collected by Catharine, possibly during 1924 trip.

Content Details: Postcard album containing postcards of England, Scotland and Wales collected by Catharine Robb Whyte, possibly on 1924 trip. held in oversize "C"

This material is presented as originally created; it may contain outdated cultural descriptions and potentially offensive content. [Read more.](#)



## Collected Material Series

<https://archives.whyte.org/en/permalink/descriptions21912>

Part Of: Luxton family fonds  
Description Level: 3 / Series  
Fonds Number: LUX  
Series: LUX / II / F : Collected material  
Sous-Fonds: LUX / II : Eleanor Luxton sous-fonds  
Reference Code: LUX / II / F  
GMD: Textual record  
Photograph  
Sound recording  
Video  
Date Range: 1875-[2004]  
Physical Description: 37.0 cm textual records.-- photographs.-- 74 cm sound recordings  
Scope & Content:

Series consists of textual records, photographs and video and sound recordings collected by Eleanor Luxton. Contents include various published and unpublished materials, including sheet music, correspondence, books about Canadian and Indigenous history, magazines, souvenir publications, travel guides, and pamphlets; visual materials, including commercial postcards, portraits of Georginal Luxton and other family members, photographs of the Tilikum on display in Victoria, and a portfolio of illustrated Stoney Nakoda portraits by R.H. Palenske; oral histories recorded and collected by Eleanor Luxton; and a VHS copy of "Qualicum Wind".

Notes: Series consists of four sub-series:  
Textual records  
Photographs  
Oral Histories (includes printed interview transcripts; transcripts in electronic format written to CD Rom and 3.5" floppy disk; supporting documentation; the recorded interviews on audio cassettes and R120 DAT tapes)  
Audiovisual and sound records  
Finding Aid: Electronic finding aid available  
Title Source: Title based on contents of series  
Processing Status: Processed

This material is presented as originally created; it may contain outdated cultural descriptions and potentially offensive content. [Read more.](#)



## Professional records

<https://archives.whyte.org/en/permalink/descriptions22016>

Part Of: Luxton family fonds  
Description Level: 3 / Series  
Fonds Number: LUX  
Series: LUX / II / B : Professional Series

Sous-Fonds: LUX / II : Eleanor Luxton sous-fonds  
Accession Number: LUX  
Reference Code: LUX / II / B  
GMD: Textual record  
Published record  
Date Range: [ca.1890] - 1993  
Physical Description: 16 m textual records, graphic materials and sound recordings  
Scope & Content:

Series consists of 7 sub-series:

\*1. Personal education, [ca.1920]-1973: Records in this sub-series pertain to Eleanor Luxton's personal education and include records relating to her primary and secondary schooling; the University of Alberta, her teacher training at the University of Alberta summer school; the Provincial Normal School in Edmonton; post-secondary schooling at Sir George Williams College where she studied Commerce, Engineering, and received her Bachelors of Science (B.Sc.). Between 1933 and 1952, Eleanor Luxton participated in numerous other personal education activities, including: drama studies, 1933 (Banff School of Drama? and/or Banff School of Fine Arts?); Garbutt Business College, Calgary (office practices, 1937), St. Stephen's College, Edmonton (1940), Ottawa Technical High School (machine draughting, 1940-1941); German language studies (1951); Banff School of Fine Arts (radio writing and techniques, 1951, 1952); Western Canada Institute, Calgary (literature, before 1952).

\*2. Teaching career: Records in this sub-series pertain to Eleanor Luxton's teaching career and include her teaching papers from secondary school and university.

\*3. Engineering career, 1935-1946: Records in this sub-series pertain to Eleanor Luxton's work at the Canadian Pacific Railway in Montreal.

\*4. Historical research, 1890-[ca.1995]: Records in this sub-series pertain to biographical research files on individuals and families in the High River area and other ranching communities of southern Alberta; research notes, files, and recordings gathered for the High River and southern Alberta ranching research projects; articles, photographs collected for the High River and southern Alberta ranching research projects, and project records relating to the Glenbow-Alberta Institute research projects on High River and southern Alberta ranching. These records include project outlines, monthly and annual reports, expense statements, correspondence, register book, lists and notes. Also included in this sub-series are Canadian and western history research papers; McDougall family research papers; Luxton family research papers.

\*5. Literary papers, 1969-1975: Records in this sub-series pertain to Eleanor Luxton's writings on Luxton's Pacific Crossing; Banff, Canada's First National Park; Latch String Out; Stoney Medicine.

\*6. Lectures and Speeches, [195-]-1993.

\*7. Other, 1936-1979.

Name Access: Luxton, Eleanor  
Subject Access: Professional and Personal Life  
School  
University  
Education  
Research  
Publication  
History

Geographic Access: Canada  
Alberta  
Banff  
Edmonton  
Quebec  
Montreal  
Category: Education  
Title Source: Title based on contents of series  
Processing Status: Processed

This material is presented as originally created; it may contain outdated cultural descriptions and potentially offensive content. [Read more.](#)



## Personal records

<https://archives.whyte.org/en/permalink/descriptions22126>

Part Of:	Luxton family fonds
Description Level:	3 / Series
Fonds Number:	LUX
Series:	II.C. Personal Series
Sous-Fonds:	II. Eleanor Luxton sous-fonds
Accession Number:	LUX
Reference Code:	LUX / II / C
GMD:	Textual record Photograph Print
Date Range:	[186-]-1994, predominant 1908-1994
Physical Description:	2.6 m textual records -- oversize textual records -- photographs
Scope & Content:	Series consists of textual records and photographs pertaining to Eleanor Luxton's personal life, including Eleanor's hobbies, travel, volunteering and collected materials.
Notes:	Series consists of 6 sub-series:  C1 : Volunteer activities: Records in this sub-series pertain to Eleanor Luxton's involvement with the Junior Red Cross, the Canadian Women's Press Club, the Historical Society of Alberta, and the Southern Alberta Women's Pioneer and Old Timers' Association.  C2 : Scrapbooks  C3 : Diaries, daybooks, notebooks, notes  C4 : Travel and hobbies  C5 : Other (includes personal government documents, business and membership cards and some personal correspondence)  C6 : Southern Alberta research project
Name Access:	Luxton, Eleanor
Language:	English
Title Source:	Title based on contents of series
Processing Status:	Processed

This material is presented as originally created; it may contain outdated cultural descriptions and potentially offensive content. [Read more.](#)



## Business, legal and financial records

<https://archives.whyte.org/en/permalink/descriptions22211>

Part Of:	Luxton family fonds
Description Level:	3 / Series
Fonds Number:	LUX
Series:	II.D. Business, Legal and Financial Series
Sous-Fonds:	II. Eleanor Luxton sous-fonds
Accession Number:	LUX
Reference Code:	LUX / II / D
GMD:	Textual record Photograph Print Negative
Date Range:	1903-1995
Physical Description:	4.8 m textual records -- oversize materials -- 31 photographs (15 prints, 16 negatives)
Scope & Content:	<p>Records in this series relate to Eleanor Luxton's business, legal and financial activities and consist of banking records; income tax returns; correspondence and invoices related to property and building construction, maintenance and management; household receipts; medical receipts; commercial and residential leases; insurance; investments; donations; rentals; legal papers relating to the estate of Annie McDougall and May Ross McDougall; mortgage papers; Parks Canada Lease agreements and need to reside challenge; Eleanor Luxton's living will.</p>
Notes:	Contents arranged by subject - see file level descriptions
Name Access:	Luxton, Eleanor
Subject Access:	Commerce and industry Finances Legal and Financial Property
Access Restrictions:	Restrictions may apply - contains private information
Reproduction Restrictions:	Restrictions may apply - contains private information
Language:	English
Category:	Commerce and industry Law and justice
Title Source:	Title based on contents of series
Processing Status:	Processed

This material is presented as originally created; it may contain outdated cultural descriptions and potentially offensive content. [Read more.](#)



## [untitled]

<https://archives.whyte.org/en/permalink/descriptions22312>

Part Of: Luxton family fonds  
Description Level: 3 / Series  
Series: III.A. Family  
Sous-Fonds: III. Luxton Family sous-fonds  
Reference Code: LUX / III / A  
Date Range: 1904-1964  
Physical Description: 0.38 m textual records

### Scope & Content:

Records in this series consist of three sub-series: A.1 Correspondence; A.2 Family Papers; A.3 Family photographs. Records pertain to the Luxton family members, McDougall family, Graham and Ross families, the William Luxton family, friends and acquaintances, and the Stoney Indians.

Title Source: Title based on contents of series  
Processing Status: Processed

This material is presented as originally created; it may contain outdated cultural descriptions and potentially offensive content. [Read more.](#)



## [untitled]

<https://archives.whyte.org/en/permalink/descriptions22313>

Part Of: Luxton family fonds  
Description Level: 3 / Series  
Series: III.B. Georgina Luxton  
Sous-Fonds: III. Luxton Family sous-fonds  
Reference Code: LUX / III / B  
Date Range: 1888-1965  
Physical Description: 0.4 m textual records

### Scope & Content:

Records in this series consist of four sub-series: B.1 Correspondence; B.2 Personal Papers and Photographs; B.3 Business, Financial, and Legal Papers; B.4 Collected Material. Records pertain to Georgina Luxton.

Title Source: Title based on contents of series  
Processing Status: Processed

This material is presented as originally created; it may contain outdated cultural descriptions and potentially offensive content. [Read more.](#)



## Extended family records

<https://archives.whyte.org/en/permalink/descriptions22344>

Part Of:	Luxton family fonds
Description Level:	3 / Series
Fonds Number:	LUX
Series:	III.C. Extended Family
Sous-Fonds:	III. Luxton Family sous-fonds
Accession Number:	LUX
Reference Code:	LUX / III / C
GMD:	Textual record Private record Photograph Photograph print
Date Range:	1893-1970
Physical Description:	0.28 m textual records ; ca.147 photographs : b&w prints; 15 x 21 cm or smaller
Scope & Content:	<p>Records in this series consist of three sub-series: C.1. William Luxton family papers and photographs; C.2. McDougall and Ross families papers, correspondence, and photographs; C.3. Other extended family records. Sub-series C.1. consists of four sub-sub-series: William Luxton; Sarah Luxton; George Luxton; Louis Luxton. Sub-series C.2. consists of two sub-sub-series: McDougall family; Ross family.</p>
Language:	English
Category:	Family and personal life Communications
Title Source:	Title based on contents of series
Processing Status:	Processed

This material is presented as originally created; it may contain outdated cultural descriptions and potentially offensive content. [Read more.](#)





## [untitled]

<https://archives.whyte.org/en/permalink/descriptions22378>

Part Of: Luxton family fonds

Description Level: 3 / Series

Series: III.D. Other Material

Sous-Fonds: III. Luxton Family sous-fonds

Reference Code: LUX / III / D

Date Range: 1836-1970

Physical Description: 8.0 cm textual records. -- photographs: 16 prints, b&w

### Scope & Content:

Records in this series consist of miscellaneous newspaper clippings; Stampede passes; programs; material relating to High School graduation ceremonies; correspondence between the McCardell family and Mr. Chas Logan and others, including photographs; and reports of the Canadian Medical Association Committee.

Title Source: Title based on contents of series

Processing Status: Processed

This material is presented as originally created; it may contain outdated cultural descriptions and potentially offensive content. [Read more.](#)



## Photographs. -- 1887-1970

<https://archives.whyte.org/en/permalink/descriptions700>

Part Of:	Banff School District No. 102 fonds
Description Level:	3 / Series
Fonds Number:	M4 / V44
Sous-Fonds:	M4 / V44
Accession Number:	209 2470 5397, 7999
Reference Code:	V44 / PA / 1 - 137 V44 / PB / 1-3
GMD:	Photograph Print
Date Range:	1887-1970
Physical Description:	140 photographs : prints
Scope & Content:	Photographs pertain to school classes, faculty, activities and town views
Name Access:	Banff School District No. 102
Language:	English
Finding Aid:	Printed inventory available
Related Material:	Constitutes Series VIII of the Banff School District No. 102 fonds
Creator:	Banff School District No. 102
Title Source:	Title based on contents of series
Processing Status:	Processed / Unprocessed

This material is presented as originally created; it may contain outdated cultural descriptions and potentially offensive content. [Read more.](#)



## Scenic and commerical photographs series. -- 1907-1975

<https://archives.whyte.org/en/permalink/descriptions722>

Part Of:	Byron Harmon fonds
Description Level:	3 / Series
Fonds Number:	V263
Series:	I. Scenic and commercial photographs
Sous-Fonds:	V263
Reference Code:	V263 / PA / unnumbered V263 / PS V263 / NA / 1 - 6409 V263 / NG / 1 - 78 V263 / NA / unnumbered V263 / sample products

Other Title Info: Parallel title is original title

Date Range: 1907 - 1942

Physical Description: ca.10,000 photographs (and ca.35 cm) : negatives, prints, postcards, transparencies, sample products

Scope & Content:

Series consists of the photographic records and sample materials of Byron Harmon Photos, the photographic business of Byron Harmon and his successors. Primary component is film and glass negatives, 1907-1942, ca.6500 items. Also includes: postcard negatives and positives and production negatives to ca.1955; original prints; a wide range of sample products, such as postcards, enlargements and framing prints, calendars and viewbooks, mainly by Harmon business, some by other photographers; and lantern slides, ca.1913-192-, pertaining to Columbia Icefield Expedition, mountaineering, mountain landscapes, Indigenous peoples, wildlife, Canadian Pacific Railway and Asian travel. Scenic / commercial series pertains to annual camps and expeditions of the Alpine Club of Canada in the Canadian Rockies and Selkirks, 1907-1913; private movie-making expeditions in the Canadian Rockies and Selkirks; mountain scenic views, primarily for postcard purposes; Banff events and development; skiing; birds and animals. Includes some material by Don Harmon and Lloyd Harmon, sons of Byron Harmon

Access Restrictions: Commercial use restrictions and restrictions on use of individual and family portraits, wedding photographs and similar works commissioned for personal use in effect. Access to original negatives restricted.

Finding Aid: Selected reference prints available in Visual Reference File

Related Material: Constitutes Series I of the Byron Harmon fonds

Title Source: Title based on accession records and contents of series

Content Details: V263 / NA - 1 to 6362 -- Series I.A.i.a. -- 1907 - 1942. -- 6362 items : negatives; 5 x 7" and smaller. -- Pertains to : annual camps and expeditions of the Alpine Club of Canada in the Canadian Rockies and Selkirks, 1907-1913 ; private movie-making expeditions in the Canadian Rockies and Selkirks ; mountain scenic views, particularly for postcard purposes ; Banff events and development ; skiing ; birds and animals. Contains some views by Don Harmon and Lloyd Harmon, also some by Lewis Freeman. Incomplete item-level inventory available. Selected reference prints available.

V263 / NA - 6363 to 6407 -- Series I.A.i.b. -- ca. 1910. -- 45 items : negatives ; panoramas, 4 x 11". -- Scenic views of Banff, Lake Louise and other areas in the Canadian Rockies. Item-level inventory available. Reference prints available.

V263 / NA - 6408, 6409 -- Series I.A.i.c. -- 192-?. -- 2 items : negatives ; circuit, 20 x 96 cm., 20 x 50 cm.-- View of group on shore of Lake O'Hara ; view of Lake McArthur with man on shore.

V263 / NG - 1 to 78 -- Series I.A.i.d. -- ca. 1905 - ca. 1915. -- 78 items : negatives ; glass. -- Pertains to mountain peaks and scenes ; Alpine Club of Canada camps and activities ; mountaineering ; Banff views and activities, including Banff Springs Hotel ; Stoney First Nation.

V263 / NA -- Series I.A.ii. -- ca. 192-? to ca. 1955. -- ca. 1100 items : negatives and positives, originals and copies ; mainly 5 x 7", some 11 x 14". -- Postcard negatives and positives and production negatives pertaining to scenic views throughout the Canadian Rockies, some elsewhere ; groups and conventions, facilities, buildings and interiors. Some by Don Harmon, Lloyd Harmon and F. A. Jackman of Jasper.

Includes negatives by Herbert O. Frind of glacier trip to Columbia Icefield area, 1917.

V263 / PA -- Series I.B. -- ca. 189-? to ca. 1965. -- ca. 900 items : prints, originals. -- Mainly first-generation prints of scenic and commercial views, wildlife, skiing, First Nation portraits, Banff Indian Days, Harmony Drug Store. Some prints were made at a much later date than negatives from which they came.

V263 / PG -- Series I.C.i.a. -- ca. 1907 - ca. 1955. -- ca. 450 titles : postcards, black/white, hand-coloured. -- Mainly scenic and wildlife views of the Canadian Rockies. Arranged by publisher's number. Preliminary item-level inventory available.

V263 / PG -- Series I.C.i.b. -- After 1956. -- ca. 200 titles : postcards, natural colour. -- Mainly scenic and wildlife views of the Canadian Rockies.

V263 / PA -- Series I.C.ii.a. -- ca. 191- to ca. 195-. -- ca. 800 items : prints, black/white. -- Mass-produced contact prints, enlargements and framing prints ; mainly scenic and wildlife views.

V263 / PA -- Series I.C.ii.b. -- ca. 191- to ca. 195-. -- ca. 120 items : prints ; hand-coloured. -- Mass-produced contact prints, enlargements and framing prints ; mainly scenic and wildlife views.

V263 / Series I.C.iii.a. -- Before 1942. -- ca. 10 cm. : various. -- Includes miniature views, advertising cards, postcard packages, view books, etc. of the Canadian Rockies.

V263 / Series I.C.iii.b. -- After 1946. -- ca. 20 cm. : various. -- Includes 35 mm. slide packages, postcard packages, playing cards, greeting cards, calendars, viewbooks, etc. of the Canadian Rockies.

V263 / Series I.C.iii.c. -- ca. 191- to ca. 196-. -- ca. 5 cm. : various. -- Sample products produced by other photographers for resale or comparison. Includes postcards, viewbooks, etc.

V263 - PS -- Series I.D. -- ca. 1913 - ca. 192-. -- ca. 170 items : transparencies ; lantern slides, many hand-coloured. Lecture slides pertaining to Columbia Icefield Expedition, 1924, mountaineering, mountain landscapes, First Nations, wildlife, Canadian Pacific Railway ; also Asian travel photographs.

Processing Status: Processed

This material is presented as originally created; it may contain outdated cultural descriptions and potentially offensive content. [Read more.](#)



## Photographs. -- [ca.1880]-1949

<https://archives.whyte.org/en/permalink/descriptions781>

Part Of: Norman Sanson fonds

Description Level: 3 / Series  
Fonds Number: V246  
Series: II. Photographs  
Sous-Fonds: V246  
Reference Code: V246 / PD / 1 - 51  
V246 / PG / 1  
GMD: Photograph  
Date Range: [1880]-1949  
Physical Description: 46 photograph albums (ca.7500 prints). -- 1 postcard set (37 prints)  
Scope & Content:  
Series consists of: A. Albums, 1880s-1949, 46 vol., pertaining to Norman Sanson's life and work; document Banff Park Museum, Sulphur Mountain and Sulphur Mountain Observatory; natural history, including mountain flora, collecting trips, weather surveys and snow surveys; Banff events, including Banff Winter Carnival, Banff Indian Days, Highland Gatherings and Banff Regatta; mountain travels and travels throughout Canada, United States, England and Europe; friends, associates and Banff personalities. Detailed identifications provided by Norman Sanson. B. Postcard set, ca.1930.  
Finding Aid: Printed inventory available. Microfilm copy of albums available for reference use  
Related Material: Constitutes Series II of the Norman B. Sanson fonds  
Title Source: Title taken from contents of series  
Processing Status: Processed

## Images



OrderRemove



OrderRemove



[OrderRemove](#)



[OrderRemove](#)



[OrderRemove](#)



[OrderRemove](#)



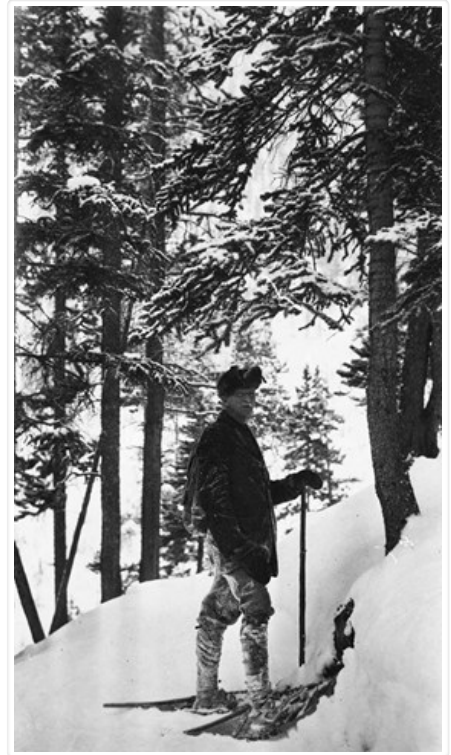
[OrderRemove](#)



[OrderRemove](#)



[OrderRemove](#)



[OrderRemove](#)



[OrderRemove](#)



[OrderRemove](#)



OrderRemove



OrderRemove



OrderRemove



OrderRemove



OrderRemove



OrderRemove





OrderRemove

OrderRemove



OrderRemove

This material is presented as originally created; it may contain outdated cultural descriptions and potentially offensive content. [Read more.](#)



## George Paris photographs : [prints, group 1]

<https://archives.whyte.org/en/permalink/descriptions15044>

Part Of: George Paris fonds

Description Level: 3 / Series

Fonds Number: V484

Series: II. Prints

Sous-Fonds: V484

Reference Code: V484 / PA - 1 to 400

GMD: Photograph

Date Range: [between 1893 and 1934]

Physical Description: ca.70 photographs : prints

### Scope & Content:

Photographs pertain to George Paris family, friends, activities, recreation and sports; Banff people, places and events; Banff area and Canadian Rockies views

Title Source: Title based on contents of series. Sub-title reflects imposed division of series contents into manageable units for description purposes

Content Details: LIST OF PRINTS (V484/PA - 1 to 400):

1 Imperial Bank staff snowshoeing

2 Group of ladies playing hockey

5 George Paris on snowshoes

6 Dr. Atkin on snowshoes

7 George Paris on snowshoes 1894

8 Group on snowshoes- Jack Stanley, Sid Baker, H. Duke, S. Collins, Pig the dog, [ca.1900]

11 Dr. Atkin on snowshoes

15 Group of snowshoers on trip to Lake Minnewanka, 1908 or 1909

16 Ashley Hine and George Paris on snowshoe trip to Lake Minnewanka, 1908 or 1909

17 Group of snowshoers on trip to lake Minnewanka, 1908 or 1909  
 19 Group of people in sleighs on Banff Avenue, [ca.1905]  
 20 George Paris feeding young moose in Banff Animal Paddock, 1896  
 26 George Paris in front of Paris Tearoom after big snowfall, 1917  
 32 George and Cyril Paris with snowshoes, 1915  
 33 Pool room after Park Hotel fire, 1915  
 34, 35 After Park Hotel fire, 1915  
 37 Group on snowshoe trip up mount Rundle, 1917  
 42, 43 Group of snowshoers going up Sulphur Mountain, 1917  
 46 Peter Whyte, Cyril Paris, George Paris, Pearl Moore, Mrs. Brodwick, and Raymond Young going up Sulphur Mountain, 1917  
 47 to 49 Group of snowshoers going up Sulphur Mountain - Harmon movie trip, 1917  
 52 George Paris with snowshoes on Sulphur Mountain, 1917  
 53 George Paris on top of Sulphur Mountain on snowshoes, 1917  
 66 George Paris and George Pulham in Hot Springs Pool, 1915  
 74 Boy's ski jumping on Learn's Hill, [ca.1919]  
 82 George Paris sliding on snowshoes, 1919?  
 84 Herb Paris sliding on snowshoes, 1919  
 85 Ted Paris sliding on snowshoes, 1919  
 91 Mrs. Annie Hoggard, Mrs. Paris, Cyril and Georgie, 1911  
 94 Ida Paris beside  
 116 George Paris resting  
 135 Conversation of first Paris house into store, 1913  
 140 Mr. and Mrs. Paris, Cyril and Georgie boating on Bow River, 1908  
 152 Cyril Paris back of Odd Craft Shop, 1912  
 154 George Paris with axe, clearing lot for house on Main Street, 1912  
 160 Edwin Noble, Ted Paris, Herb Paris, 1914  
 179 Ida Paris in boat on Echo Creek, 1912  
 190 Ida Paris near Bow River bridge sign, 1912  
 209 George and Ida Paris on bridge at Johnston Canyon, 1918  
 216, 218 Bevan Ashton, Marion Ashton and Ida Paris at Johnston Canyon preparing a meal, 1918  
 224 Georgia Paris playing in yard, 1908  
 230 Ida Paris with Cyril and pet dog, 1908  
 243 George Paris, Ida Paris, and Marion Ashton with car, 1916  
 244 Bevan Ashton, Marion Ashton and Ida Paris in car, 1916  
 245 George and Ida Paris on porch, 1916  
 246 Bevan Ashton and Ida Paris on porch, 1916  
 320 Cyril, Georgie and Ida Paris with one of the Paris twins and woman at Lake Minnewanka, 1918  
 333 Ida Paris and her sister Emma with their children at Lake Minnewanka, 1910  
 334 Ida Paris and her sister Emma with their children on tour boat at Lake Minnewanka, [ca.1910]  
 343 Paris tearoom and house, 1912

345 Ruby Edwards, Georgie Paris, Ida Paris, Cyril Paris, Mrs. Barbour, Ted and Herb Paris, and Ted and Murray Barbour at Banff Springs Hotel, 1917

347 Charlie Barbour, Chess Edwards, Georgia Paris, Ruby Edwards, Cyril Paris, Ted Barbour, Mrs. Barbour, Ida Paris, Ted and Herb Paris, and Rupert Edwards at picnic at Upper Hot Springs, 1917

353 Mrs. Paris and Mrs. Barbour and their children in auto on Banff Avenue in front of old Paris Tearoom, 1917

354 to 358 Mrs. Paris? and Mrs. Barbour? and their children in Hot Springs Pool, 1917

373 Ida, Herb and Ted Paris with tearoom girls Florence Beatty, Evelyn Beatty, Grace ?, Ada Styles, Mrs. Weiberq, and two women, 1916

379 Effigy of Kiser [Kaiser], Victory Parade, 1918

380 Wagon in Victory Parade, 1918

385 W. H. Scarth at Lake Minnewanka, [ca.1918]

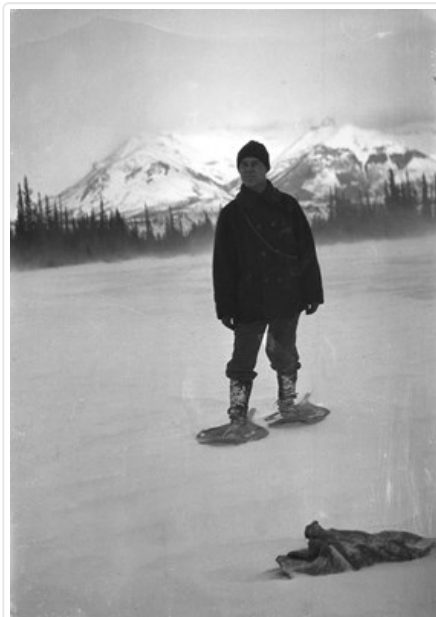
386 Hockey match including Dr. Brett, [ca.1918]

387 Hockey match, [ca.1918]

388 John Lawrence - Dr. Brett's druggist, [ca.1918]

Processing Status: Processed

## Images



OrderRemove



OrderRemove

This material is presented as originally created; it may contain outdated cultural descriptions and potentially offensive content. [Read more.](#)

[George Paris photographs : \[prints, group 2\]](#)

<https://archives.whyte.org/en/permalink/descriptions15045>



Part Of: George Paris fonds  
 Description Level: 3 / Series  
 Fonds Number: V484  
 Series: II. Prints  
 Sous-Fonds: V484  
 Reference Code: V484 / PA - 401 to 800  
 GMD: Photograph  
 Date Range: [between 1893 and 1934]  
 Physical Description: ca.50 photographs : prints  
 Scope & Content:

Photographs pertain to George Paris family, friends, activities, recreation and sports; Banff people, places and events; Banff area and Canadian Rockies views

Title Source: Title based on contents of series. Sub-title reflects imposed division of series contents into manageable units for description purposes

Content Details: LIST OF PRINTS (V484/PA - 401 to 800):

- 401 Dr. Atkins and Dr. Harry Brett in front of the Sanitarium with Mrs. Brett's dog Victor, 1912-1913
- 402, 403, 405 Earle Brett and [Kit Storry?], [ca.1910]
- 406 Luxton Bear at trading post
- 428 Cyril? Paris ski jumping at Learn's Hill, 1920
- 429 One of Paris twins ski jumping at Learn's Hill, 1920
- 463 George Paris and Charley Barbour at Hotel Victoria, 1921
- 480 Fulton Dunsmore and dog "Coffee", 1921
- 482 Group snowshoeing Josephine McSwain, Grace MacKenzie, unknown, George Paris, Cyril Paris, 1921
- 484 Ice palace, Banff Winter Carnival, 1921
- 485 George Paris with friend from India, 1921
- 490 Ida Paris (left) and woman with snowshoes
- 495 George, Ida, and Georgie Paris in boat on Bow River, 1922
- 506 Hart Bryant, Mrs. Paris, Georgie and Paris twins on way to train station, 1922
- 510 Ida Paris and Mrs. Sheldon at Cave Tearoom, 1922
- 511 Ida Paris and woman at Cave Tearoom, 1922
- 516 Georgie Paris, Mrs. Kerslake, Mrs. Paris, Edme Moore, Lillian Girling and Beatrice Hind top of Sulphur Mountain, 1922
- 517 Georgie Paris, Mrs. Kerslake, Edme Moore, Lillian Girling, Beatrice Hind, and Eva Kerslake top of Sulphur Mountain, 1922
- 518 Mrs. Paris, Beatrice Hines, Mrs. Kerslake on top of Sulphur Mountain, 1922
- 519 Ida and Georgie Paris on trip up Sulphur Mountain, 1922
- 522 Bevan Ashton with camera
- 547 Group of children at Upper Hot Springs Pool, 1922
- 550, 551 Dog team races at Lake Minnewanka, 1923
- 553 Ida Paris and others in front of teepee at dog team races at Lake Minnewanka, 1923
- 652 Ida Paris and Mrs. John Walker on Banff Avenue, [ca.1925]
- 670 Georgie Paris and Mrs. Nicholson on steps of Brett Drug Store,

1924

678 Women on boardwalk trail at Johnston Canyon, 1925

685 Frankie Bacon and Florence Pink sitting outside house, 1925

690 Old Bow River Bridge, Banff, 1922

706 Herb and Ted Paris and Eddie Noble on skis, 1922

710 Cyril and Fulton in grocery truck, [ca.1925]

713, 714 Ida Paris and Mrs. Luxton on snowshoe trip over Stony Squaw Mountain, [ca.1925]

716, 717 George Paris and Georgina Luxton on snowshoe trip over Stony Squaw Mountain, [ca.1925]

718 George Paris and Chelry Reid during snowshoe trip on Stony Squaw Mountain, [ca.1925]

720 Georgina Luxton and Charlie Reid during snowshoe trip to Stony Squaw Mountain, [ca.1925]

721, 722 Ida Paris and Georgina Luxton during snowshoe trip over Stony Squaw Mountain, [ca.1925]

723 George Paris with pail over fire at Forty Mile Creek, [ca.1925]

748 Mrs. White, Ida Paris, Cliff White standing by car, 1927

749 Norman Luxton, George Paris, and Bevan Ashton with camera, 1927

759 Mr. Lyons skating, 1930

784 Banff Avenue and Cascade Mountain from Bow River Bridge in winter, 1933

792 Banff Avenue looking north 1934

793 Stores an Banff Avenue, 1934

Processing Status: Processed

## Images



OrderRemove



This material is presented as originally created; it may contain outdated cultural descriptions and potentially offensive content. [Read more.](#)



## George Paris photographs : [prints, group 3]

<https://archives.whyte.org/en/permalink/descriptions15046>

Part Of: George Paris fonds  
 Description Level: 3 / Series  
 Fonds Number: V484  
 Series: II. Prints  
 Sous-Fonds: V484  
 Reference Code: V484 / PA - 801 to 900  
 GMD: Photograph  
 Date Range: [between 1893 and 1934]  
 Physical Description: ca.70 photographs : prints  
 Scope & Content:

Photographs pertain to George Paris family, friends, activities, recreation and sports; Banff people, places and events; Banff area and Canadian Rockies views

Title Source: Title based on contents of series. Sub-title reflects imposed division of series contents into manageable units for description purposes

Content Details: LIST OF PRINTS (V484/PA - 801 to 900 ):

- 815 Mr. and Mrs. Dave White, Ida Paris, Cliff White in potato patch, 1927
- 820 Man with Brewster Hall in the background
- 825 Sid Collins and dog "Pig" in boat on a creek, Mount Rundle in the background, 1898
- 826 First climb of the Alpine Club over 10000 ft. (with Wheeler)
- 835 Interior of cave at Cave and Basin sulphur springs, Banff
- 836 Banff Springs Hotel from Tunnel Mountain, [ca.1904]
- 837 Cascade Mountain and Bow River bridge, 1904?
- 838 Mount Rundle and Bow River Bridge, 1904?
- 840 Banff Springs Hotel and Mount Rundle, 1904?
- 841 Sanitarium Hotel after heavy snowfall, 1903
- 842 Brett House and Sanitarium Hotel, 1898
- 843 Brett House, 1903?
- 844 Brett House, 1903
- 845 Sulphur Mountain Observatory before completion
- 846 Bow River Boathouse at sunset
- 847 Grand View Villa at Upper Hot Springs, 1905
- 848 Paris House under construction on Banff Avenue, 1902
- 849 N.W.M.P. Barracks at Banff
- 850 Sanitarium Hotel and Bow River Bridge, 1908

851 Ida and Cyril Paris behind buildings at Lake Minnewanka, 1904  
 852 [Casey Oliver?] and interior of Brett Drug store  
 853 Brett Drug Store  
 854 Charlie Barbour and Miss Thompson in school room, [ca.1905]  
 855 Tunnel Mountain, east side, and Bow Valley looking east  
 856 Hoodoos on Tunnel Mountain, Banff  
 857 Mount Rundle from Cave and Basin road, 1900  
 858 Cascade Mountain and Bow River after rainstorm, 1902  
 859 North face of Mount Rundle from Loop Drive, 1902  
 860 Mount Edith and the Bow River  
 861 Mount Rundle and Forty Mile Creek  
 862 Middle Hot Springs before it caved in, 1898  
 863 Mount Rundle and Forty Mile Creek in winter  
 864 Vermilion Lake in winter  
 865 Taxidermist Bob Robertson with large sheep head  
 866 Curling at Banff: Arthur Saddington, Ralph Edwards, and Bill Mather, 1898  
 867 Group on porch of Sanitarium Hotel 1893 868 Hartly going over Bow Falls, 1902  
 869 George Paris skating on old skating rink, 1901  
 870 Ida Paris and Mrs. Harfield boating on Echo Creek, [ca.1900]  
 871 Ida Paris in canoe on Echo Creek, 1901  
 872 Ida Paris in boat on Forty Mile Creek, 1899  
 873 Ida Paris fishing from boat on channel between First and Second Vermilion Lakes, 1899  
 874 George Paris fishing from boat on channel between First and Second Vermilion Lakes, 1899  
 875, 876 Group outside hospital. Front: Fern Brewster, Claude Frost (Brewster), Vivian Galletly holding Adeline Fulcher, Jack Frost (Brewster), Syd Frost (Brewster), Back row: Etherl Fulcher holding Ronald, Ida Paris holding Cyril, Mrs. William Frost (later Mrs. Bill Brewster), Mrs. Celia (Lowther) Harrison, Mrs. Jim Brewster, 1904  
 877 George and Ida Paris, 1903  
 878 George Paris skating on Forty Mile Creek, 1905  
 879 George Paris snowshoeing on the Bow River, 1901  
 880 Bodyguard (Sikhs) of Duke of Cornwall and York (later King George V) during Banff visit, 1901  
 881 Nurses and Chinese man at Brett Hospital?  
 882 Dr. White, Raymond Rooper?, Dr. R. G. Brett, Mrs. Brett's sister, Mrs. R. G. Brett, Dr. Harry Brett at Brett house, [ca.1903]  
 883 George Paris skating on the Bow River, 1905  
 884 George Paris skating on Willow Creek, 1905  
 885 Ida Paris and others in the Basin, 1900  
 886 George Paris skating on the Bow River, [ca.1905]  
 887 George Paris snowshoeing on Bow Falls, 1902  
 888 Nurse McLauchlin and another nurse in the Sanitarium Hospital  
 889 Sydney Frost (Brewster)(later Mrs. Syd Graves)

890 Dr. White, Marion Cardell, Mrs. Brett, Dr. R. G. Brett, Mrs. Brett's sister, [ca.1903]  
891 Sid Baker on snowshoes  
892 Group at Lake Minnewanka: Ida Paris with Cyril, Mrs. Fulcher with Ronald, Miss Thompson, Charley Barbour, and girls, 1904  
893 Ida Paris and Cyril, 1904  
894 Hockey game on Banff's first skating rink on the Bow River, 1894  
895 Chinese laundryman at the Sanitarium, [ca.1898]  
896 Raymond Rooper with baby and dog, [ca.1903]  
897 Raymond Rooper and Donna Rooper, [ca.1903]  
898 Ida Paris with Cyril and Nurse McLauchlin, 1904  
899 Ida Paris, Gussie Atkinson, Harry Lang and Harry Symonds with Cyril Paris, 1904  
900 Cyril Paris in baby carriage, 1904

Processing Status:

Processed

## Images



OrderRemove



OrderRemove

This material is presented as originally created; it may contain outdated cultural descriptions and potentially offensive content. [Read more.](#)