



[Untitled]

<https://archives.whyte.org/en/permalink/artifactcoj.04.02>

Artist: Charles John Collings (1848 – 1931, British)

Title: [Untitled]

Date: n.d.

Medium: ink on paper

Dimensions: 22.5 x 15.5 cm

Description: a reproduction watercolour showing the exterior of a grand hotel. A sign with "Savoy Hotel" can be seen on the upper floors. Large trees surround the hotel.

Credit: Gift of John Rivette, Seymour Arm, 1982

Catalogue Number: CoJ.04.02

Images



This material is presented as originally created; it may contain outdated cultural descriptions and potentially offensive content. [Read more.](#)



The Grand Foyer of the Savoy Hotel London

<https://archives.whyte.org/en/permalink/artifactcoj.04.01>

Artist:	Charles John Collings (1848 – 1931, British)
Title:	The Grand Foyer of the Savoy Hotel London
Date:	n.d.
Medium:	ink on paper
Dimensions:	24.0 x 34.0 cm
Description:	A reproduction of a watercolour painting showing an ornate and colourful lobby filled with palm trees and furniture.
Subject:	Savoy Hotel
Credit:	Gift of John Rivette, Seymour Arm, 1982
Catalogue Number:	CoJ.04.01

Images



This material is presented as originally created; it may contain outdated cultural descriptions and potentially offensive content. [Read more.](#)



Untitled (Reminiscent of an old English Village)

<https://archives.whyte.org/en/permalink/artifactcoj.02.08>

Artist:	Charles John Collings (1848 – 1931, British)
Title:	Untitled (Reminiscent of an old English Village)
Date:	1931
Medium:	oil on canvas
Dimensions:	63 x 75 cm
Description:	A dirt road leading into a small village. Large house in center with smaller houses in the background to the left. Perspective of a viewer from the road as it leaves a wooded area and continues towards houses.
Subject:	English Village dirt road wood trees houses England
Credit:	Gift of John Rivette, Seymour Arm, 1997
Catalogue Number:	CoJ.02.08

Images



This material is presented as originally created; it may contain outdated cultural descriptions and potentially offensive content. [Read more.](#)



Nightfall

<https://archives.whyte.org/en/permalink/artifactcoj.02.07>

Artist:	Charles John Collings (1848 – 1931, British)
Title:	Nightfall
Date:	n.d.
Medium:	oil on board
Dimensions:	10.5 x 21 cm
Description:	Landscape with five trees set off on a hill on the right side moving towards centre. Dark blue-black sky top, changing to yellow-ochre and orange in distance. Dark horizon line of blue-black trees, rock foreground brc.
Subject:	landscape Canadian Rockies
Credit:	Gift of John Rivette, Seymour Arm, 1982
Catalogue Number:	CoJ.02.07

Images



This material is presented as originally created; it may contain outdated cultural descriptions and potentially offensive content. [Read more.](#)



Seascape, Rock and Sea

<https://archives.whyte.org/en/permalink/artifactcoj.02.06>

Artist:	Charles John Collings (1848 – 1931, British)
Title:	Seascape, Rock and Sea
Date:	n.d.
Medium:	oil on board
Dimensions:	9 x 20 cm
Description:	Oil study of a rocky foreground, large brown rock set off to l. High horizon line broken by another rock mass in trc. Blue water surrounds rocks, sky is of greenish-grey. "The technique here is patchy but a luminosity forecasts Collings later mastery of light. On the back is a lake scene, possibly Shuswap, which is smoother and freer, indicating a later date." -- "Charles John Collings, 1848-1931" Catalogue Raisonne by Linda Heath
Subject:	landscape Canadian Rockies
Credit:	Gift of John Rivette, Seymour Arm, 1982
Catalogue Number:	CoJ.02.06

Images



This material is presented as originally created; it may contain outdated cultural descriptions and potentially offensive content. [Read more.](#)



Landscape

<https://archives.whyte.org/en/permalink/artifactcoj.02.05>

Artist:	Charles John Collings (1848 – 1931, British)
Title:	Landscape
Date:	n.d.
Medium:	oil on board
Dimensions:	20.5 x 24.5 cm
Description:	Green grassy area in foreground, house set off to right, evidence of two roof tops along same plane as the house. Tree beside the house, also other foliage. Bluish horizon line, subggesting trees, blue-grey cloudy sky.
Subject:	landscape
	Canadian Rockies
Credit:	Gift of John Rivette, Seymour Arm, 1982
Catalogue Number:	CoJ.02.05

Images



This material is presented as originally created; it may contain outdated cultural descriptions and potentially offensive content. [Read more.](#)



House and Tree

<https://archives.whyte.org/en/permalink/artifactcoj.03.022>

Artist:	Charles John Collings (1848 – 1931, British)
Title:	House and Tree
Date:	n.d.
Medium:	graphite on paper
Dimensions:	14 x 8.7 cm
Description:	Scene with a tree in the foreground left/center reaching up to the top of the frame, and houses in behind it.
Subject:	landscape
Credit:	Gift of John Rivette, Seymour Arm, 1984
Catalogue Number:	CoJ.03.022

Images



This material is presented as originally created; it may contain outdated cultural descriptions and potentially offensive content. [Read more.](#)



A Little Ditty Bird

<https://archives.whyte.org/en/permalink/artifactcoj.03.023>

Artist:	Charles John Collings (1848 – 1931, British)
Title:	A Little Ditty Bird
Date:	c. 1895
Medium:	graphite on paper
Dimensions:	19 x 12.5 cm
Description:	Drawing of a designed goblet standing fully in the center of the page. The area surrounding the goblet has been completely shaded in. The drawing au verso is a nose, ear, and hand study. "The dark background with the still darker goblet allowed Collings to achieve bright metallic-like highlights on the embossed goblet. Barely visible, a tiny, whimsical "Ditty" bird peaks over the lip of the cup." -- "Charles John Collings, 1848-1931" Catalogue Raisonne by Linda Heath
Subject:	landscape
Credit:	Gift of John Rivette, Seymour Arm, 1984
Catalogue Number:	CoJ.03.023

Images



This material is presented as originally created; it may contain outdated cultural descriptions and potentially offensive content. [Read more.](#)

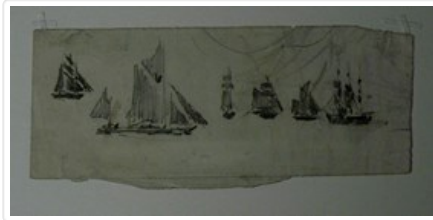


Sailboat Gathering

<https://archives.whyte.org/en/permalink/artifactcoj.03.024>

Artist:	Charles John Collings (1848 – 1931, British)
Title:	Sailboat Gathering
Date:	n.d.
Medium:	graphite on paper
Dimensions:	6 x 15.5 cm
Description:	Scene with six sailboats.
Subject:	landscape
Credit:	Gift of John Rivette, Seymour Arm, 1984
Catalogue Number:	CoJ.03.024

Images



This material is presented as originally created; it may contain outdated cultural descriptions and potentially offensive content. [Read more.](#)



Mosaics of Strata and Cliffs in Mountain Farmland

<https://archives.whyte.org/en/permalink/artifactcoj.03.025>

Artist:	Charles John Collings (1848 – 1931, British)
Title:	Mosaics of Strata and Cliffs in Mountain Farmland
Date:	n.d.
Medium:	graphite on paper
Dimensions:	20 x 26 cm
Description:	Landscape scene with a bare birch tree standing to the left. A pond or stream in the center foreground, further behind is a farm and hills behind. In the bottom right corner is a sectioned square with a smaller scale of the scene.
Subject:	landscape
Credit:	Gift of John Rivette, Seymour Arm, 1984
Catalogue Number:	CoJ.03.025

Images



This material is presented as originally created; it may contain outdated cultural descriptions and potentially offensive content. [Read more.](#)



Mountain Scene

<https://archives.whyte.org/en/permalink/artifactcoj.03.026>

Artist:	Charles John Collings (1848 – 1931, British)
Title:	Mountain Scene
Date:	n.d.
Medium:	graphite on paper
Dimensions:	12.5 x 26 cm
Description:	Mountain scene with mountain moving up from left to right.
Subject:	landscape
Credit:	Gift of John Rivette, Seymour Arm, 1984
Catalogue Number:	CoJ.03.026

Images



This material is presented as originally created; it may contain outdated cultural descriptions and potentially offensive content. [Read more.](#)



Pine Tree

<https://archives.whyte.org/en/permalink/artifactcoj.03.027>

Artist:	Charles John Collings (1848 – 1931, British)
Title:	Pine Tree
Date:	n.d.
Medium:	graphite on paper
Dimensions:	25 x 9 cm
Description:	A tall vertical drawing of a single pine tree.
Subject:	landscape
Credit:	Gift of John Rivette, Seymour Arm, 1984
Catalogue Number:	CoJ.03.027

Images



This material is presented as originally created; it may contain outdated cultural descriptions and potentially offensive content. [Read more.](#)



Hurstleigh

<https://archives.whyte.org/en/permalink/artifactcoj.03.028>

Artist:	Charles John Collings (1848 – 1931, British)
Title:	Hurstleigh
Date:	n.d.
Medium:	graphite on paper
Dimensions:	19.5 x 25 cm
Description:	Landscape scene with a stream flowing in the center of the page, under an arch in a bridge. - there is building along the road which passes over the bridge further beyond. - bush growing along the right side of the road.
Subject:	landscape
Credit:	Gift of John Rivette, Seymour Arm, 1984
Catalogue Number:	CoJ.03.028

Images



This material is presented as originally created; it may contain outdated cultural descriptions and potentially offensive content. [Read more.](#)



Berry Head

<https://archives.whyte.org/en/permalink/artifactcoj.03.029>

Artist: Charles John Collings (1848 – 1931, British)

Title: Berry Head

Date: prior to 1931

Medium: graphite on paper board

Dimensions: 19 x 25.5 cm

Description: Appears to be a coastal scene with cliffs in the foreground looking out over the water, there is a few small tree here. - out on the water is a upcropping of lone rock. "A coast scene sketched from a bluff, this is in an earlier coarser style of Collings." – "Charles John Collings, 1848-1931" Catalogue Raisonne by Linda Heath

Subject: landscape

Credit: Gift of John Rivette, Seymour Arm, 1984

Catalogue Number: CoJ.03.029

Images



This material is presented as originally created; it may contain outdated cultural descriptions and potentially offensive content. [Read more.](#)



Houses with Twin Trees

<https://archives.whyte.org/en/permalink/artifactcoj.03.030>

Artist:	Charles John Collings (1848 – 1931, British)
Title:	Houses with Twin Trees
Date:	prior to 1931
Medium:	graphite on paper
Dimensions:	19 x 25 cm
Description:	Scene of a house with two trees in the immediate foreground to the right and left of center. - further behind is a house which fills the space between the two trees and as far as the right edge. - two windows and a door on the immediate front, and a window and door on the side.
Subject:	landscape
Credit:	Gift of John Rivette, Seymour Arm, 1984
Catalogue Number:	CoJ.03.030

Images



This material is presented as originally created; it may contain outdated cultural descriptions and potentially offensive content. [Read more.](#)



Pond and Farmhouse

<https://archives.whyte.org/en/permalink/artifactcoj.03.539>

Artist:	Charles John Collings (1848 – 1931, British)
Title:	Pond and Farmhouse
Date:	prior to 1931
Medium:	graphite on paper
Dimensions:	20 x 24.5 cm
Description:	Landscape scene with a marshy area in the foreground, with grass-like reed shapes growing out of it. - the is a building in the background with two chimneys and another building further to the right.
Subject:	landscape
Credit:	Gift of John Rivette, Seymour Arm, 1984
Catalogue Number:	CoJ.03.539

Images



This material is presented as originally created; it may contain outdated cultural descriptions and potentially offensive content. [Read more.](#)



Bennalt Portage

<https://archives.whyte.org/en/permalink/artifactcoj.03.031>

Artist:	Charles John Collings (1848 – 1931, British)
Title:	Bennalt Portage
Date:	prior to 1931
Medium:	graphite on paper
Dimensions:	20.5 x 26 cm
Description:	Scene with mountains in the background and a bridge leading across a river below this to the below right of center there is a building at the right end of the bridge just behind.
Subject:	landscape
Credit:	Gift of John Rivette, Seymour Arm, 1984
Catalogue Number:	CoJ.03.031

Images



This material is presented as originally created; it may contain outdated cultural descriptions and potentially offensive content. [Read more.](#)



At Glacier

<https://archives.whyte.org/en/permalink/artifactcoj.03.032>

Artist:	Charles John Collings (1848 – 1931, British)
Title:	At Glacier
Date:	prior to 1931
Medium:	graphite on paper
Dimensions:	20 x 26 cm
Description:	Mountain scene with surrounding mountains and a valley lake. - appears to be something man-made stretching across the lake from foreground to the background.
Subject:	landscape
Credit:	Gift of John Rivette, Seymour Arm, 1984
Catalogue Number:	CoJ.03.032

Images



This material is presented as originally created; it may contain outdated cultural descriptions and potentially offensive content. [Read more.](#)



Steep Valley, Glacier

<https://archives.whyte.org/en/permalink/artifactcoj.03.033>

Artist:	Charles John Collings (1848 – 1931, British)
Title:	Steep Valley, Glacier
Date:	prior to 1931
Medium:	graphite on paper
Dimensions:	20 x 26 cm
Description:	Mountain scene with three mountains one in the middle distance, the second closest to the right, and the third to the left. - there is lake or stream in the middle foreground of the mountains with trees surrounding it.
Subject:	landscape
Credit:	Gift of John Rivette, Seymour Arm, 1984
Catalogue Number:	CoJ.03.033

Images



This material is presented as originally created; it may contain outdated cultural descriptions and potentially offensive content. [Read more.](#)



Garden Homes of B.C.

<https://archives.whyte.org/en/permalink/artifactcoj.03.034>

Artist:	Charles John Collings (1848 – 1931, British)
Title:	Garden Homes of B.C.
Date:	prior to 1931
Medium:	graphite on cardboard package
Dimensions:	26 x 20.5 cm
Description:	Scene of a pathway or road with tall slim trees on either side reaching up to the top edge where they disappear. - darkly shaded grey areas on the trees. - a blue spot of pigment 15.5cm from the br. along that edge.
Subject:	landscape
Credit:	Gift of John Rivette, Seymour Arm, 1984
Catalogue Number:	CoJ.03.034

Images



This material is presented as originally created; it may contain outdated cultural descriptions and potentially offensive content. [Read more.](#)