



Pincushion

<https://archives.whyte.org/en/permalink/artifact104.45.0064>

Title:	Pincushion
Date:	n.d.
Material:	paper; fabric; metal
Dimensions:	5.0 x 15.0 x 21.0 cm
Description:	<p>A pin cushion in the form of a turtle. Turtle is made of paper mache that has been painted black. Turtle's shell opens to reveal red satin fabric cushion in the top of the shell, an egg shaped hole in the centre of the turtle's body, lined with same red satin, and a ring of black velvet around this section. Black velvet has 9 spikes sticking straight up from it. Two paper bands hold paper packages of small sewing needles that read "S. BEISSEL & SONS SHARPS". A silver thimble is in a slot at the top of the ring. 6 mother of pearl buttons shaped like flowers inside.</p>
Subject:	<p>Moore Home</p> <p>sewing</p> <p>textilework</p>
Credit:	Gift of Pearl Evelyn Moore, Banff, 1979
Catalogue Number:	104.45.0064

Images



This material is presented as originally created; it may contain outdated cultural descriptions and potentially offensive content. [Read more.](#)



Pincushion

<https://archives.whyte.org/en/permalink/artifact104.45.0028%20a%2cb>

Title:	Pincushion
Date:	1920 – 1940
Material:	fibre; paper
Dimensions:	4.7 x 8.0 cm
Description:	Contained in dark blue, plain cardboard box printed in white at centre of lid, "Merrimade, Lawrence, Mass", two pillow shaped pincushions with note, "Aunt Folly Clarks pin cushions". (a) square, pink, cushion, trimmed around edge with red, embroidered feather stitching. Fabric has brocade like, woven in curlicue pattern, note attached with red elastic band. "Edith bought this in Japan". (b) rectangular, blue satin with red, embroidered featherstitching around edge. Wide bank of blue leaflike pattern on pink background runs around cushion, with red and white narrow stripes each side bordered by black. Note attached with two straight pins, "My Grandmother Becket's bonnet strings, Polly" Note: .6 x .2 cm dark stain on one side.
Subject:	households hobbies sewing Edith Morse Robb Polly Becket
Credit:	Gift of Catharine Robb Whyte, O. C., Banff, 1979
Catalogue Number:	104.45.0028 a,b

Images



This material is presented as originally created; it may contain outdated cultural descriptions and potentially offensive content. [Read more.](#)



Pincushion

<https://archives.whyte.org/en/permalink/artifact104.45.0041>

Title:	Pincushion
Date:	n.d.
Material:	fabric; wood
Dimensions:	4.5 x 11.5 cm
Description:	Dome-shaped fabric pincushion with wood base. Cushion is covered in several layers of lace and contains a variety of straight pins, safety pins, and sewing needles.
Subject:	Moore home textilework sewing
Credit:	Gift of Pearl Evelyn Moore, Banff, 1979
Catalogue Number:	104.45.0041

Images



This material is presented as originally created; it may contain outdated cultural descriptions and potentially offensive content. [Read more.](#)



Pincushion

<https://archives.whyte.org/en/permalink/artifact104.45.0044>

Title:	Pincushion
Date:	n.d.
Material:	fabric
Dimensions:	6.0 x 13.0 cm
Description:	A round pincushion covered in beige lace with a brown net ruffle around the perimeter. A straight pin with a purple ball and a remembrance day poppy are stuck in it.
Subject:	Moore home sewing
Credit:	Gift of Pearl Evelyn Moore, Banff, 1979
Catalogue Number:	104.45.0044

Images



This material is presented as originally created; it may contain outdated cultural descriptions and potentially offensive content. [Read more.](#)



Pincushion

<https://archives.whyte.org/en/permalink/artifact104.45.0046>

Title:	Pincushion
Date:	n.d.
Material:	fabric
Dimensions:	4.0 x 6.5 x 6.5 cm
Description:	A small travel pincushion in the form of a crocheted hat that opens to reveal 4 sheets of cotton. The hat is pink with green, blue, and purple decorations.
Subject:	Moore home sewing travel
Credit:	Gift of Pearl Evelyn Moore, Banff, 1979
Catalogue Number:	104.45.0046

Images



This material is presented as originally created; it may contain outdated cultural descriptions and potentially offensive content. [Read more.](#)



Pincushion

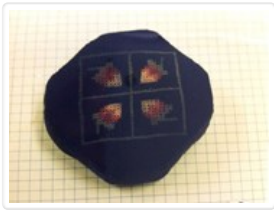
<https://archives.whyte.org/en/permalink/artifact104.45.0052>

Title:	Pincushion
Date:	n.d.
Material:	metal, velvet
Dimensions:	13.0 x 4.0 cm
Description:	Decorative silver metal pincushion structure with clover-shaped ornate key fastener. Features a large silver bird with a small dark-red velvet pincushion on its back, and a larger one below.
Subject:	whyte home, textile
Credit:	Gift of Catharine Robb Whyte, O. C., Banff, 1979
Catalogue Number:	104.45.0052

Images



This material is presented as originally created; it may contain outdated cultural descriptions and potentially offensive content. [Read more.](#)

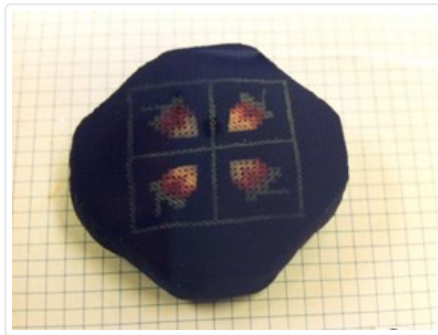


Pincushion

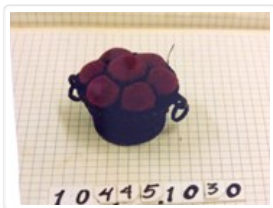
<https://archives.whyte.org/en/permalink/artifact104.45.1029>

Title:	Pincushion
Date:	1820 – 1850
Material:	fibre; paper
Dimensions:	2.5 cm
Description:	A green octagonal shaped pincushion with needlework design. A square with 4 strawberries in red, green, white on one side and a square with 4 abstract designs on the other.
Subject:	households sewing needlework Mary Schaffer Warren
Credit:	Gift of Charles C. Reid, Banff, Alberta, 1986
Catalogue Number:	104.45.1029

Images



This material is presented as originally created; it may contain outdated cultural descriptions and potentially offensive content. [Read more.](#)

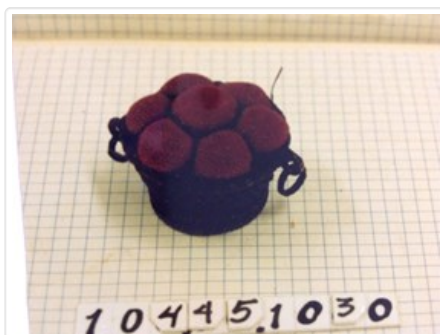


Pincushion

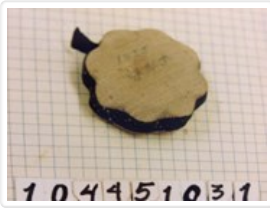
<https://archives.whyte.org/en/permalink/artifact104.45.1030>

Title:	Pincushion
Date:	1820 – 1850
Material:	fibre; wood
Dimensions:	5.0 cm
Description:	A pincushion shaped in a lattice woven basket full of red fabric green and red strawberries.
Subject:	households needlework Mary Schaffer Warren
Credit:	Gift of Charles C. Reid, Banff, Alberta, 1986
Catalogue Number:	104.45.1030

Images



This material is presented as originally created; it may contain outdated cultural descriptions and potentially offensive content. [Read more.](#)

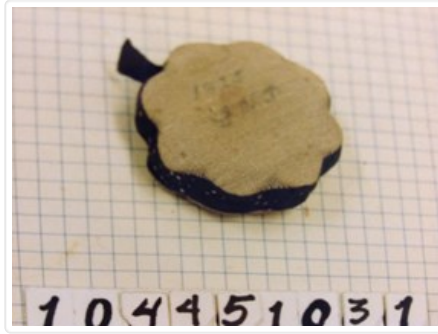


Pincushion

<https://archives.whyte.org/en/permalink/artifact104.45.1031>

Title:	Pincushion
Date:	n.d.
Material:	fibre; metal
Description:	A flower shaped pin cushion in green and white satin full of pins. The pins are on the sides.
Subject:	households needlework Mary Schaffer Warren
Credit:	Gift of Charles C. Reid, Banff, Alberta, 1986
Catalogue Number:	104.45.1031

Images



This material is presented as originally created; it may contain outdated cultural descriptions and potentially offensive content. [Read more.](#)