

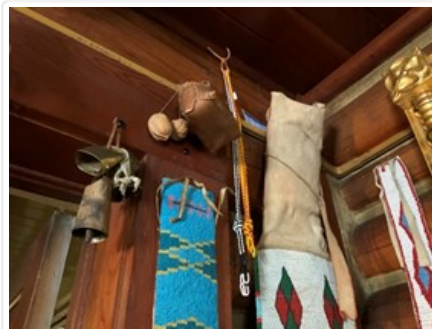


Beaded Necklace

<https://archives.whyte.org/en/permalink/artifact103.01.0010>

Title:	Beaded Necklace
Date:	1940 – 1950
Material:	glass; fibre
Dimensions:	46.0 cm
Description:	A single strand beaded necklace with black beads in the centre and white beads along the edges. The ends are tied in a knot with two loops of black and white beads at each end.
Subject:	Indigenous Stoney tourism souvenir; regalia
Credit:	Gift of Pearl Evelyn Moore, Banff, 1979
Catalogue Number:	103.01.0010

Images



This material is presented as originally created; it may contain outdated cultural descriptions and potentially offensive content. [Read more.](#)