

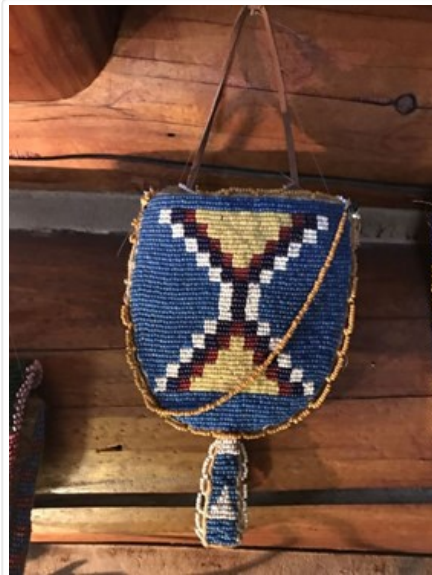


Beaded Bag

<https://archives.whyte.org/en/permalink/artifact103.08.0015>

Title:	Beaded Bag
Date:	1900 – 1920
Material:	skin; glass
Dimensions:	11.0 x 22.0 cm
Description:	A curved bottom flat pouch with a small 'tail' hanging from the bottom edge, and two short handles made of a string of beads. The pouch is entirely covered with beadwork of blue, yellow, dark blue and red beads with a cross of white beads on the front.
Subject:	Indigenous, Stoney decorative beadwork regalia
Credit:	Gift of Pearl Evelyn Moore, Banff, 1979
Catalogue Number:	103.08.0015

Images



This material is presented as originally created; it may contain outdated cultural descriptions and potentially offensive content. [Read more.](#)