

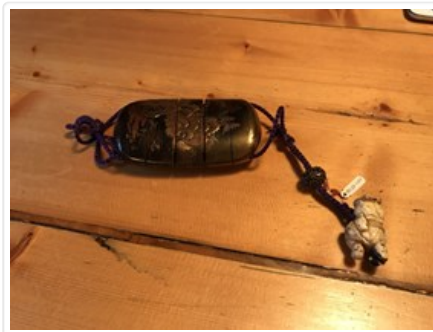


### Medicine Case

<https://archives.whyte.org/en/permalink/artifact103.08.0284>

Title:	Medicine Case
Date:	1800 – 1890
Material:	ivory; wood; fibre; metal
Dimensions:	2.2 x 5.7 x 9.3 cm
Description:	The case is in five segments which are both held together and can be separated by tension of the purple cord. Cord extends from a hole on either extremity of segments rim edges, through to attach itself to the ivory netsuke. Netsuke is woman supporting small child on her back at left shoulder, woman wearing kimono, obi and getas. Signature on woman's right leg. Cord hole found on woman's left hip. Round filigree brass button slides on cord between netsuke and intro. Lacquer design on intro is landscape with birds on one side. Obverse is harbour scene with lighthouse boats and full moon, all in gold and black lacquer.
Subject:	households miniatures figure female child Japanese Edward S. Morse
Credit:	Gift of Catharine Robb Whyte, O. C., Banff, 1979
Catalogue Number:	103.08.0284

### Images



This material is presented as originally created; it may contain outdated cultural descriptions and potentially offensive content. [Read more.](#)