

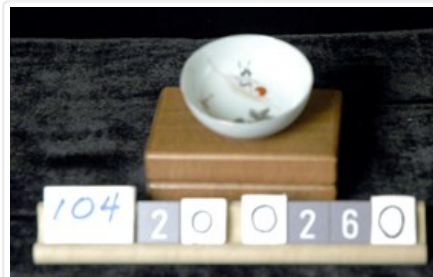


Sauce Dish

<https://archives.whyte.org/en/permalink/artifact104.20.0260>

Title:	Sauce Dish
Date:	1870 – 1890
Material:	ceramic
Dimensions:	2.7 x 6.0 cm
Description:	Small porcelain dish with gold, black, orange over glaze enamels. Sun scene with crane and pine. Trimmed foot with cobalt border design, signed base. Writing: Shigara (the drawer).
Subject:	Whyte home households Edith Morse Robb Edward S. Morse
Credit:	Gift of Catharine Robb Whyte, O. C., Banff, 1979
Catalogue Number:	104.20.0260

Images



This material is presented as originally created; it may contain outdated cultural descriptions and potentially offensive content. [Read more.](#)