

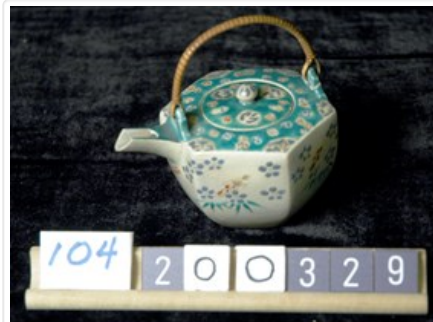


### Teapot

<https://archives.whyte.org/en/permalink/artifact104.20.0329>

Title:	Teapot
Date:	1850 – 1900
Material:	ceramic
Dimensions:	6.4 x 8.2 x 9.8 cm
Description:	Transparent glaze with blue, green, red, gold metal enamel over glazes. Inside pot rim 1.5 cm. chipped off. Fragments seen in glaze inside of pot. Was thrown initially and later hand formed and tool trimmed to create shape. One handle has been repaired once before because of glaze traces. Whyte Estate staff re-glued handle to pot March, 1980 with alpha cyanoecrylate ("Crazy Glue").
Subject:	households Edith Morse Robb Edward S. Morse
Credit:	Gift of Catharine Robb Whyte, O. C., Banff, 1979
Catalogue Number:	104.20.0329

### Images



This material is presented as originally created; it may contain outdated cultural descriptions and potentially offensive content. [Read more.](#)